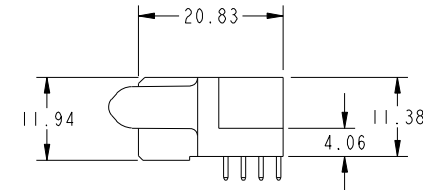
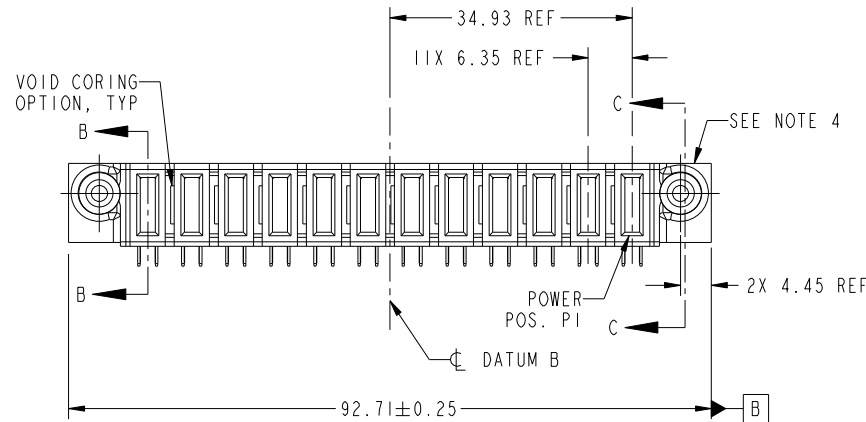


Tous droits strictement reserves. Reproduction ou communication a des tiers interdite sous quelque forme que ce soit sans autorisation écrite du propriétaire. Propriete de c FCI. Droits de reproduction FCI.



All rights strictly reserved. Reproduction or issue to third parties in any form whatever is not permitted without written authority from the proprietor. Property of FCI. Copyright FCI.

PRODUCT NO.	POWER													
	E2	P12	P11	P10	P9	P8	P7	P6	P5	P4	P3	P2	P1	E1
51915-137-- NOTE 3														



CODE	DIM "M" MATING LENGTH	CONTACT TYPE
PA	[1.07]	POWER

mat'l code				SEE NOTE 2		tolerances unless otherwise specified		CUSTOMER		
ltr	ecn no.	dr	date	linear	0.X ± 0.3	projection	COPY	www.fciconnect.com		
A	DG07-0398	SH	10/09/07	angles	0.XX ± 0.13		title	12P R/A SOLDER RECEPTACLE		
				dr	0.XXX ± 0.051		product family	PwrBlade	code	213
				enr	0° ± 2°	scale	size	dwg no	sheet	1 of 4
				chr	Sincere He 09/24/07	1:1	A	51915-137		
				appd	Sincere He 09/24/07					
					Gary Hsieh 09/24/07					
					Joseph Hsia 09/24/07					
sheet index	revision sheet	A 1	A 2	A 3	A 4					

cage code 22526

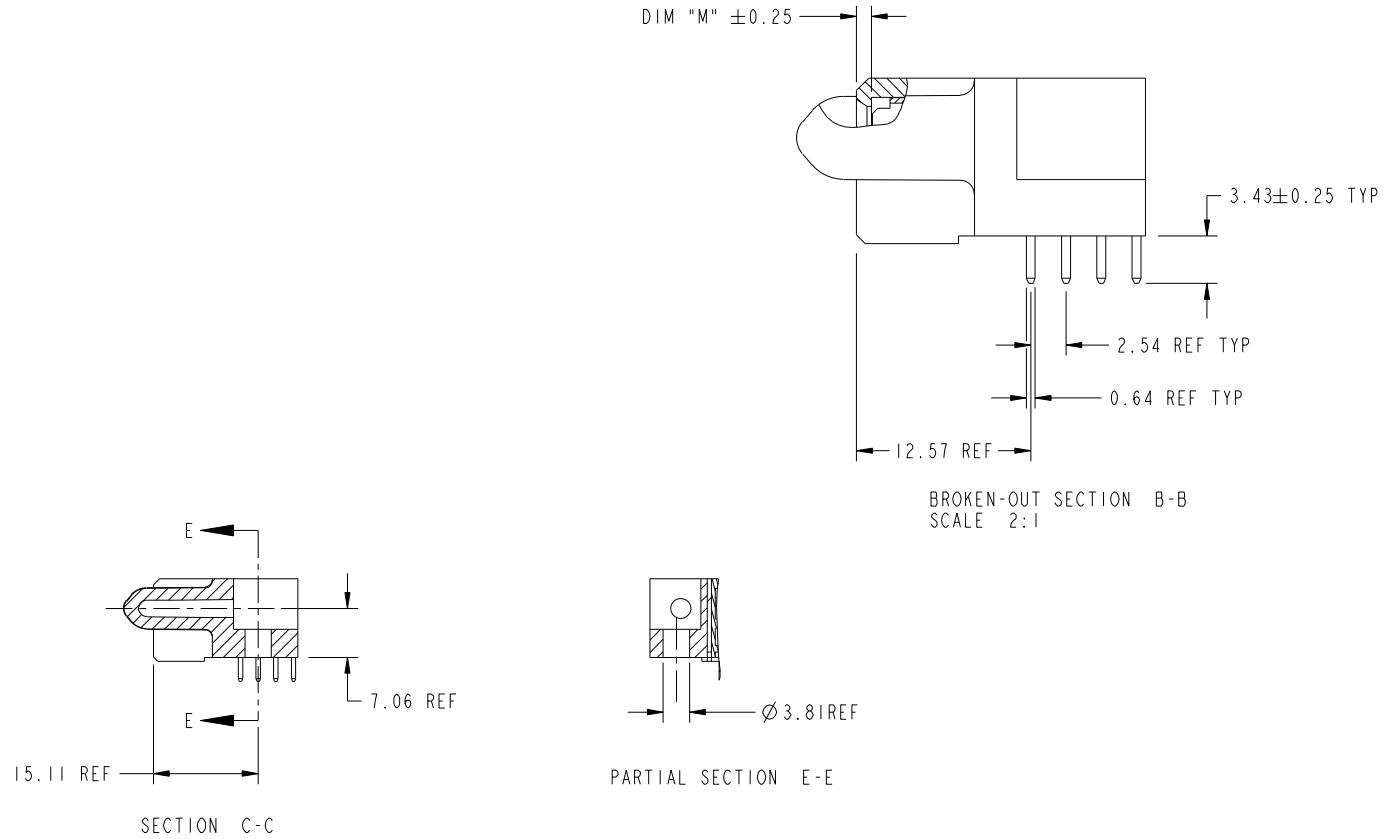
Pro/E

Tous droits strictement reserves. Reproduction ou communication a des tiers interdite sous quelque forme que ce soit sans autorisation écrite du propriétaire. Propriete de c FCI. Droits de reproduction FCI.



All rights strictly reserved. Reproduction or issue to third parties in any form whatever is not permitted without written authority from the proprietor. Property of FCI. Copyright FCI.

PRODUCT NUMBER
51915-137--
NOTE 3



mat'l code				SEE NOTE 2		tolerances unless otherwise specified		CUSTOMER		 www.fciconnect.com		
ltr	ecn no.	dr	date	linear	0.X ± 0.3		COPY		 title 12P R/A SOLDER RECEPTACLE	product family		code
A					0.XX ± 0.13		 MIM			size	PwrBlade	213
					0.XXX ± 0.051		 scale 1:1			dwg no	51915-137	sheet 2 of 4
				angles	0° ± 2°							
		dr	Sincere He	09/24/07								
		enr	Sincere He	09/24/07								
		chr	Gary Hsieh	09/24/07								
		appd	Joseph Hsia	09/24/07								
sheet index	revision sheet											

cage code 22526

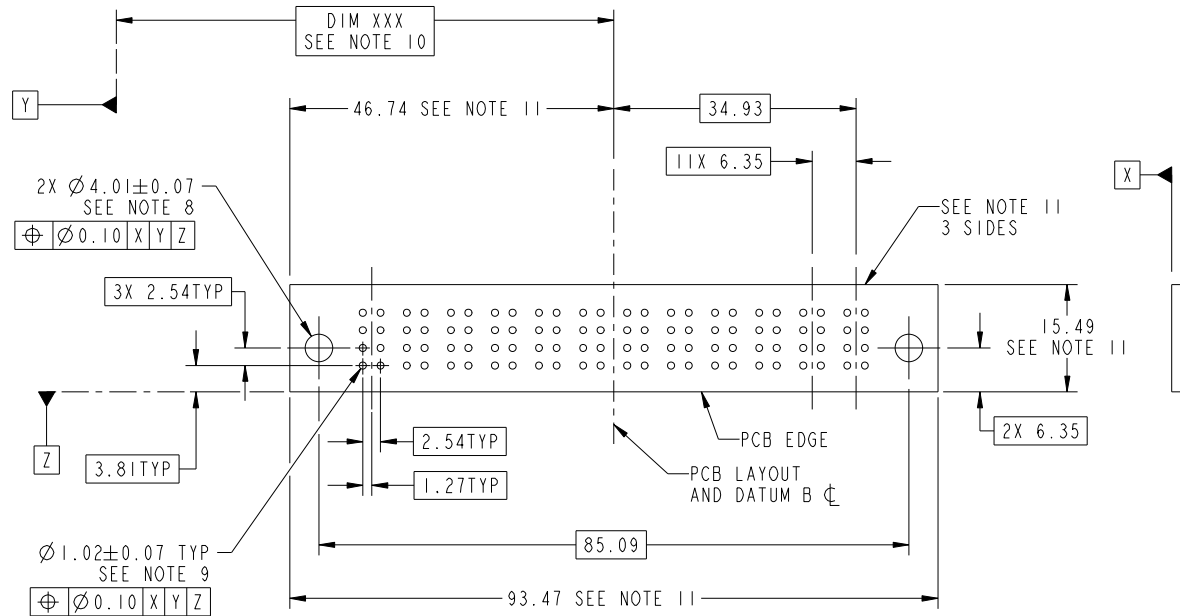
Pro/E

Tous droits strictement reserves. Reproduction ou communication a des tiers interdite sous quelque forme que ce soit sans autorisation écrite du propriétaire. Propriete de c FCI. Droits de reproduction FCI.



All rights strictly reserved. Reproduction or issue to third parties in any form whatever is not permitted without written authority from the proprietor. Property of FCI. Copyright FCI.

PRODUCT NUMBER
51915-137--
NOTE 3



RECOMMENDED PCB LAYOUT

mat'l code				SEE NOTE 2		tolerances unless otherwise specified		CUSTOMER		FCI	
ltr	ecn no.	dr	date	linear	0.X ± 0.3	COPY		www.fciconnect.com		title	
A					0.XX ± 0.13	projection		12P		R/A SOLDER RECEPTACLE	
				angles	0.XXX ± 0.051	MIM		product family		code	
				dr	Sincere He 09/24/07	← MIM →		PwrBlade		213	
				enr	Sincere He 09/24/07	scale		size		sheet	
				chr	Gary Hsieh 09/24/07	1:1		dwg no		3 of 4	
				appd	Joseph Hsia 09/24/07	A		51915-137			
sheet index	revision sheet										

cage code 22526

Pro/E

Tous droits strictement reserves. Reproduction ou communication a des tiers interdite sous quelque forme que ce soit sans autorisation écrite du propriétaire. Propriete de c FCI. Droits de reproduction FCI.

All rights strictly reserved. Reproduction or issue to third parties in any form whatever is not permitted without written authority from the proprietor. Property of FCI. Copyright FCI.

PRODUCT NUMBER
51915-137--
NOTE 3

NOTES:

1. DIMENSIONS AND TOLERANCES ARE IN ACCORDANCE WITH ASME Y14.5M, 1994 UNLESS OTHERWISE SPECIFIED.

CONNECTOR NOTES:

- 2. HOUSING MATERIAL: UL 94 V-0 GLASS FILLED
HIGH-TEMP THERMOPLASTIC
POWER CONTACT MATERIAL: COPPER ALLOY
SIGNAL PIN MATERIAL: COPPER ALLOY
 - 3. PLATING:
51915-137, 51915-137LF PLATING SPEC. WAS SHOWN IN THE PRINT OF 10064183.
 - 4. MANUFACTURER'S NAME, P/N, AND DATE CODE TO APPEAR ON THIS SURFACE.
 - 5. PRODUCT SPECIFICATION GS-12-149.
APPLICATION SPECIFICATION BUS-20-067.
 - 6. PACKAGED IN TRAYS.
- PCB NOTES:
- 7. ALL HOLE DIAMETERS ARE FINISHED HOLE SIZE.
 - 8. MOUNTING HOLES, WHERE APPLICABLE, ARE UNPLATED.
 - 9. $\varnothing 1.151 \pm 0.025$ DRILLED HOLES PLATED WITH
0.008 MIN SnPb OR Sn OVER 0.03
TO 0.08 Cu PLATING TO ACHIEVE
 $\varnothing 1.02 \pm .07$ HOLE.
 - 10. "DIM XXX" TO BE DETERMINED BY THE CUSTOMER.
 - 11. CONNECTOR KEEP-OUT ZONE.

mat'l code				SEE NOTE 2		tolerances unless otherwise specified		CUSTOMER		FCI		www.fciconnect.com	
ltr	ecr no.	dr	date	linear	0.X ± 0.3		COPY		projection	title			
A					0.XX ± 0.13		MIM			12P R/A SOLDER RECEPTACLE			
					0.XXX ± 0.051		←			product family PwrBlade code 213			
				angles	0° ± 2°		scale		size		dwg no		sheet
				dr	Sincere He	09/24/07	1:1		A		51915-137		4 of 4
				enr	Sincere He	09/24/07							
				chr	Gary Hsieh	09/24/07							
				appd	Joseph Hsia	09/24/07							
sheet index	revision sheet												

cage code 22526

Pro/E