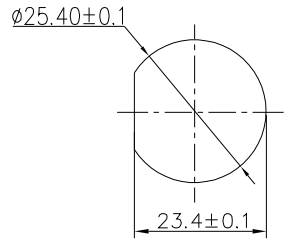
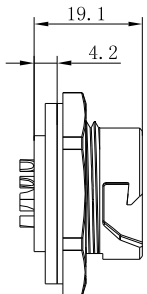


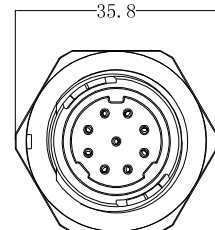
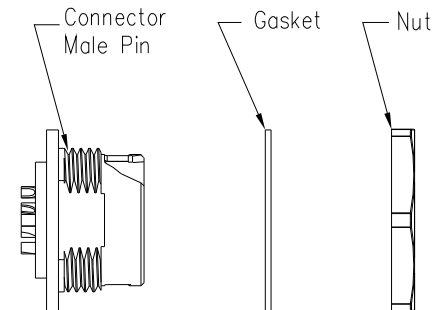
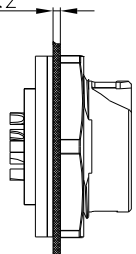
REV.	ECN NO.	DESCRIPTION	SIGN	DATE
C1	N/A	INITIAL DRAWING	Liu	2020/05/18



RECOMMENDED PANEL Cut-Out



Panel T: Max 2.2

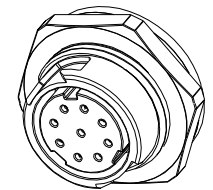


- Specification:
- 1.Operation Temperature: -45°C~105°C.
  - 2.Insulation Resistance: 100MΩ at DC500V.
  - 3.Contact Resistance: <10mΩ.
  - 4.Withstand Voltage: 1500V AC
  - 5.Operating Current: 5A
  - 6.Operating Voltage: AC 125V
  - 7.Waterproof Rate: IP67 (Mated)
  - 8.Housing: Nylon, Black
  - 9.Female Pin: Copper Alloy, Gold Plated
  - 10.Gasket: Silicon Gray
  - 11.Panel Nut: Nylon, Blue
  - 12.Torque Rate: 0.8~1.0N·m
  - 13.RoHS Compliant.
  - 14.Mating Cap P/N: 806-00058-00

22XXX635-01  
Pin Number

9 Pin	18 Pin	24 Pin
P/N: 24009635-01	P/N: 24018635-01	P/N: 24024635-01

Pin Assignments Front View



**CHOGORI**

UNIT:mm	DESCRIPTION Large Series Push Lock Female socket With Female Pin	PART NO 24XXX635-01	DRAWN BY Liu	DATE 2020/05/18
TOLERANCE .X ±0.25 .XX ±0.15 .XXX ±0.05 ANGLES ±1°	SCALE: 1:1 SHEET 1 OF 1	DWG NO	CHECKED BY Mo	DATE 2020/05/18
	REV. C1 SIZE A4 *: Inspection Item	CUSTOMER	APPROVED BY Adley	DATE 2020/05/18

THIS INFORMATION IS CONFIDENTIAL AND IS DISCLOSED TO YOU ON CONDITION THAT NO FURTHER DISCLOSURE IS MADE BY YOU TO OTHER THAN CHOGORI PERSONNEL WITHOUT AUTHORIZATION FROM CHOGORI CORP.