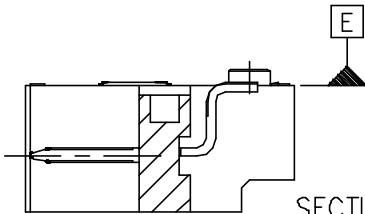
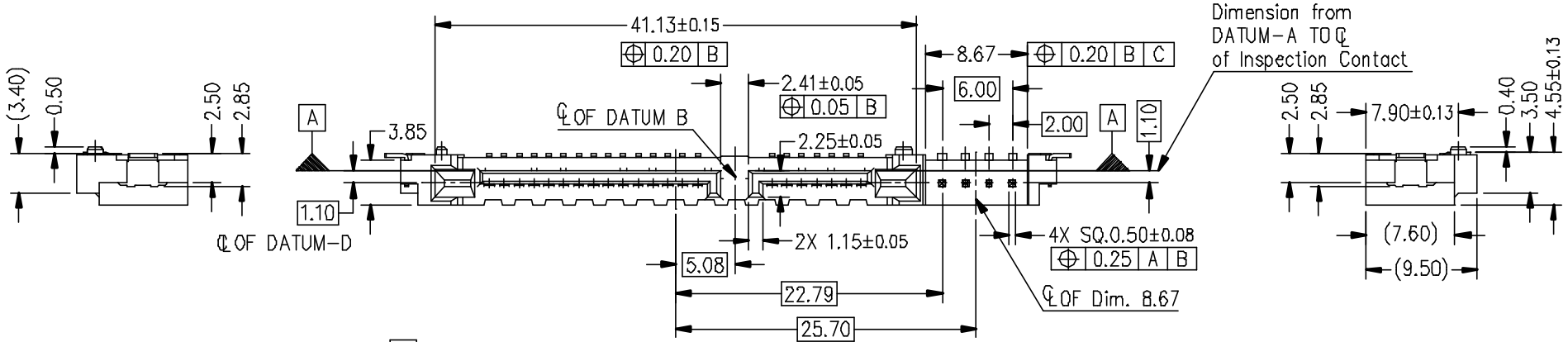
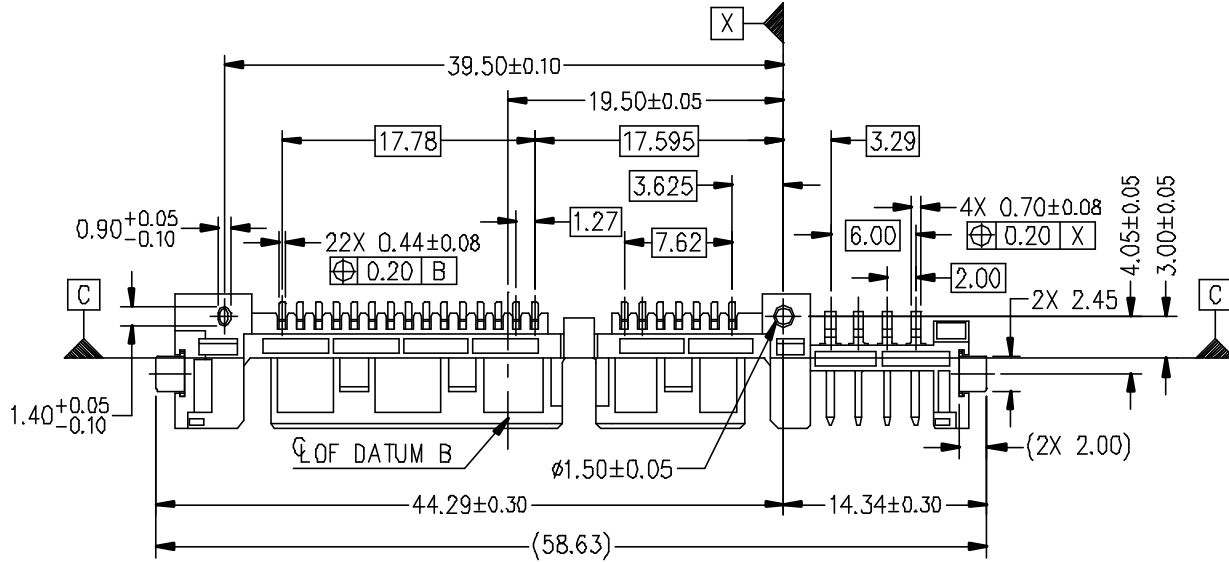


This document is the property of and embodies CONFIDENTIAL and proprietary information of FCI. No part of this information, shown on this drawing, may be used in any way or disclosed to others without the written consent of FCI. Copyright FCI.

FCI CONFIDENTIAL

PART NUMBER
10092193-00XXLF



SECTION E-E
(SCALE 4 : 1)

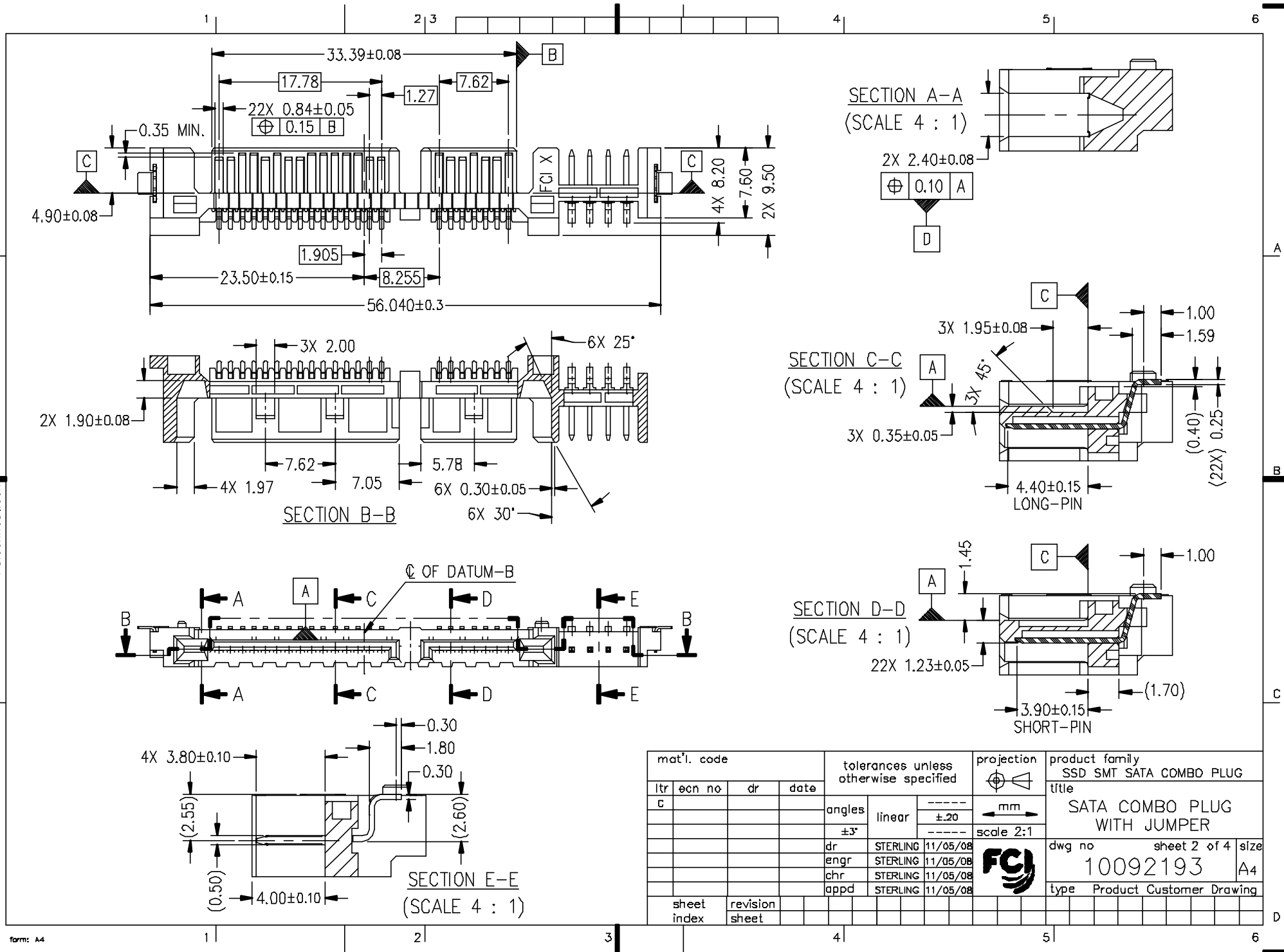
mat'l. code				tolerances unless otherwise specified			projection	product family	
ltr	ecn no	dr	date	angles	linear	mm	SSD SMT SATA COMBO PLUG		
A	SD9-0260	SLLIM	090819				title		
B	SD9-0325	SLLIM	091021	±3°	-----	-----	SATA COMBO PLUG WITH JUMPER		
C	ELX-S-15978	SLLUM	130930				scale 2:1		
				dr	STERLING	11/05/08	dwg no	sheet 1 of 4	size
				enr	STERLING	11/05/08	10092193	A4	
				chr	STERLING	11/05/08	type Product Customer Drawing		
				appd	STERLING	11/05/08			
sheet index	revision sheet	C	C	C	C				
		1	2	3	4				

This document is the property of and embodies CONFIDENTIAL and proprietary information of FCI. No part of the information shown on this drawing may be used in any way or disclosed to others without the written consent of FCI. Copyright FCI.

FCI CONFIDENTIAL



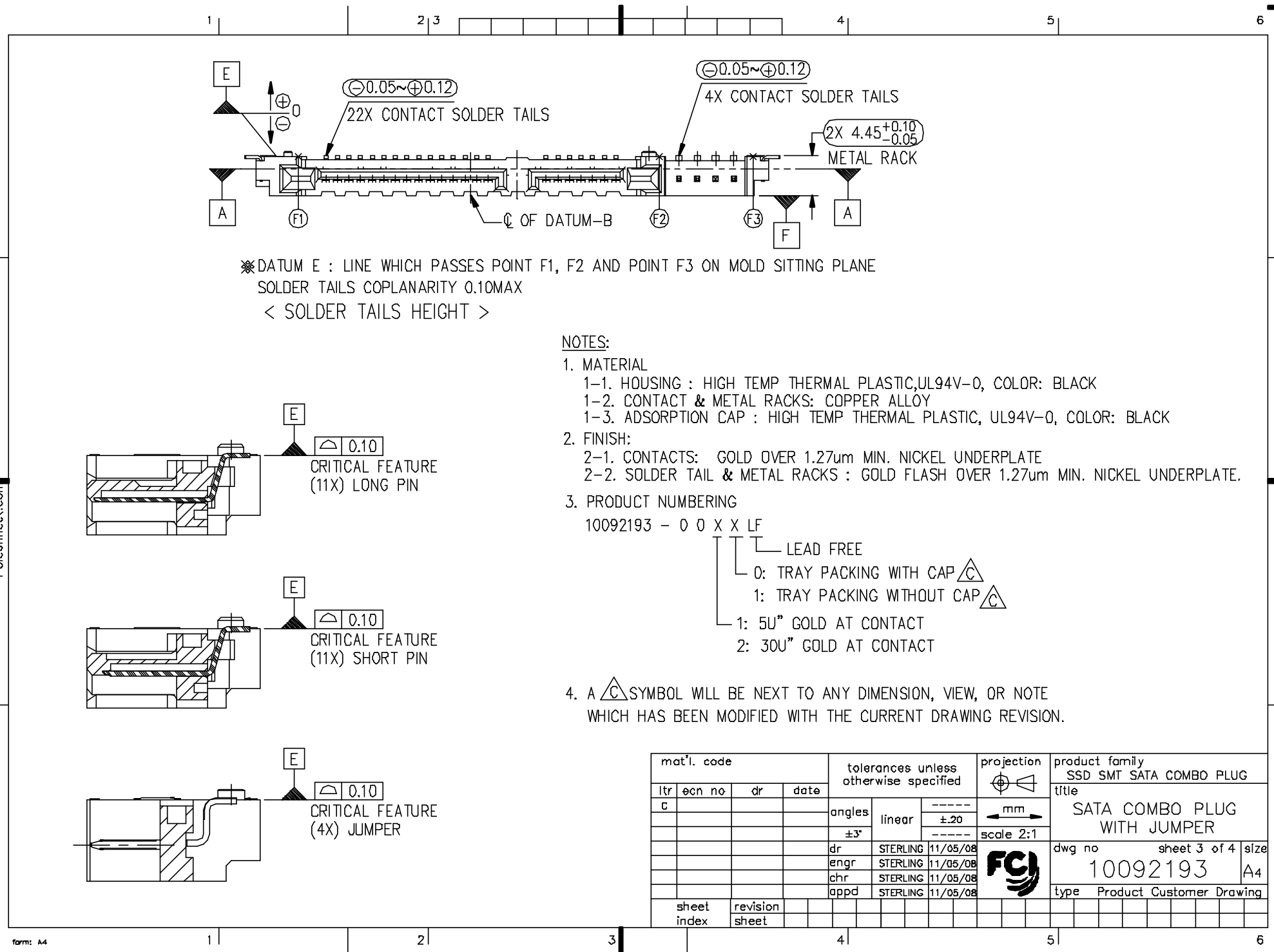
FCIconnect.com



This document is the property of and embodies CONFIDENTIAL and
 exact information of FCJ. No part of the information shown
 on this drawing may be used in any way or disclosed to others
 without the written consent of FCJ.
 Copyright FCJ.

FCJ CONFIDENTIAL

FCconnect.com



※ DATUM E : LINE WHICH PASSES POINT F1, F2 AND POINT F3 ON MOLD SITTING PLANE
 SOLDER TAILS COPLANARITY 0.10MAX
 < SOLDER TAILS HEIGHT >

NOTES:

1. MATERIAL
 - 1-1. HOUSING : HIGH TEMP THERMAL PLASTIC, UL94V-0, COLOR: BLACK
 - 1-2. CONTACT & METAL RACKS: COPPER ALLÖY
 - 1-3. ADSORPTION CAP : HIGH TEMP THERMAL PLASTIC, UL94V-0, COLOR: BLACK
2. FINISH:
 - 2-1. CONTACTS: GOLD OVER 1.27um MIN. NICKEL UNDERPLATE
 - 2-2. SOLDER TAIL & METAL RACKS : GOLD FLASH OVER 1.27um MIN. NICKEL UNDERPLATE.
3. PRODUCT NUMBERING
 - 10092193 - 0 0 X X LF

- LEAD FREE
- 0: TRAY PACKING WITH CAP
- 1: TRAY PACKING WITHOUT CAP
- 1: 5U" GOLD AT CONTACT
- 2: 30U" GOLD AT CONTACT

4. A SYMBOL WILL BE NEXT TO ANY DIMENSION, VIEW, OR NOTE WHICH HAS BEEN MODIFIED WITH THE CURRENT DRAWING REVISION.

mat'l. code				tolerances unless otherwise specified		projection	product family SSD SMT SATA COMBO PLUG	
ltr	ecn no	dr	date	angles ±3°	linear ±.20		title	
c							SATA COMBO PLUG WITH JUMPER	
				dr	STERLING	11/05/08	dwg no	
				enr	STERLING	11/05/08	sheet 3 of 4	
				chr	STERLING	11/05/08	size	
				appd	STERLING	11/05/08	A4	
sheet index		revision sheet				type		Product Customer Drawing

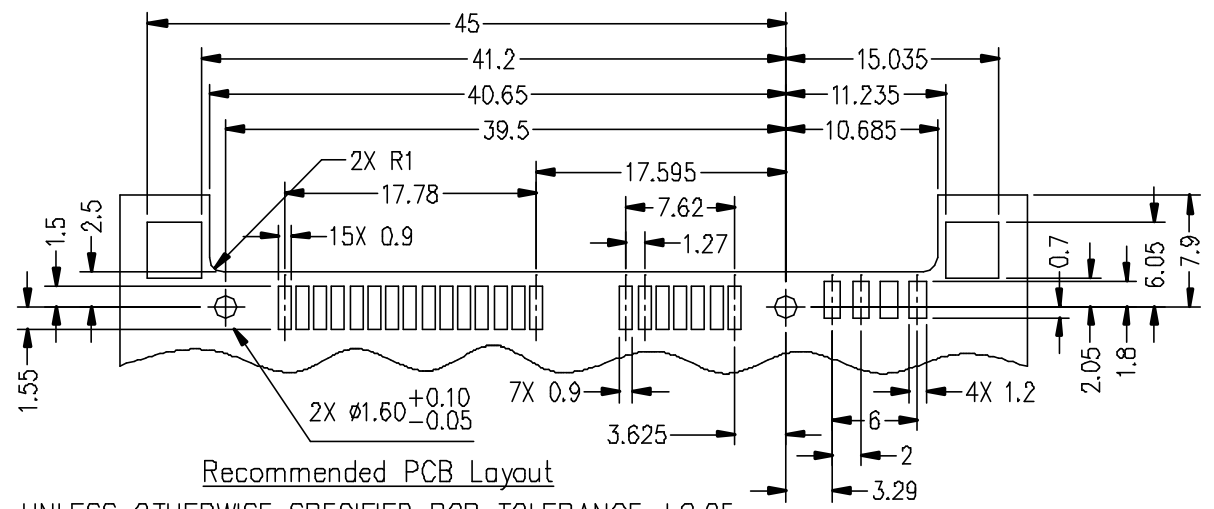
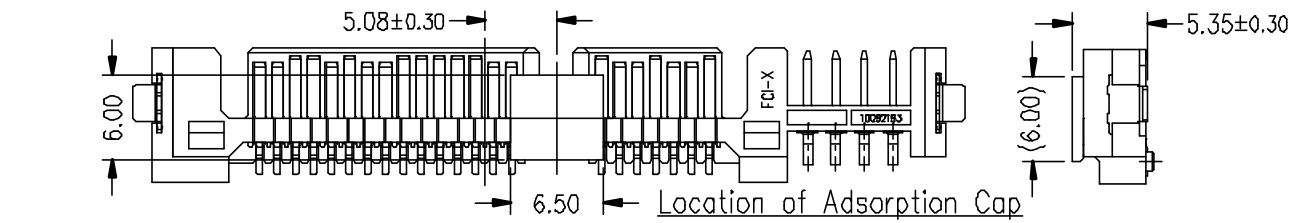
This document is the property of and embodies CONFIDENTIAL and proprietary information of FCJ. No part of this information shown here may be used in any way or disclosed to others without the written consent of FCJ. Copyright FCJ.

FCJ CONFIDENTIAL

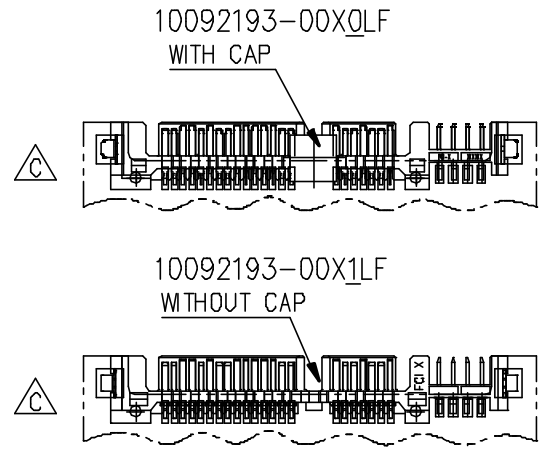


FCconnect.com

1 | 2 | 3 | 4 | 5 | 6



Recommended PCB Layout
 UNLESS OTHERWISE SPECIFIED PCB TOLERANCE ±0.05



mat'l. code				tolerances unless otherwise specified			projection	product family	
ltr	ecn no	dr	date	angles ±3°	linear	 mm scale 2:1	SSD SMT SATA COMBO PLUG		
c							title		
				dr	STERLING	11/05/08	SATA COMBO PLUG WITH JUMPER		
				enr	STERLING	11/05/08	dwg no sheet 4 of 4 size		
				chr	STERLING	11/05/08	10092193 A4		
				appd	STERLING	11/05/08	type Product Customer Drawing		
sheet index		revision sheet							

form: A4 | 1 | 2 | 3 | 4 | 5 | 6