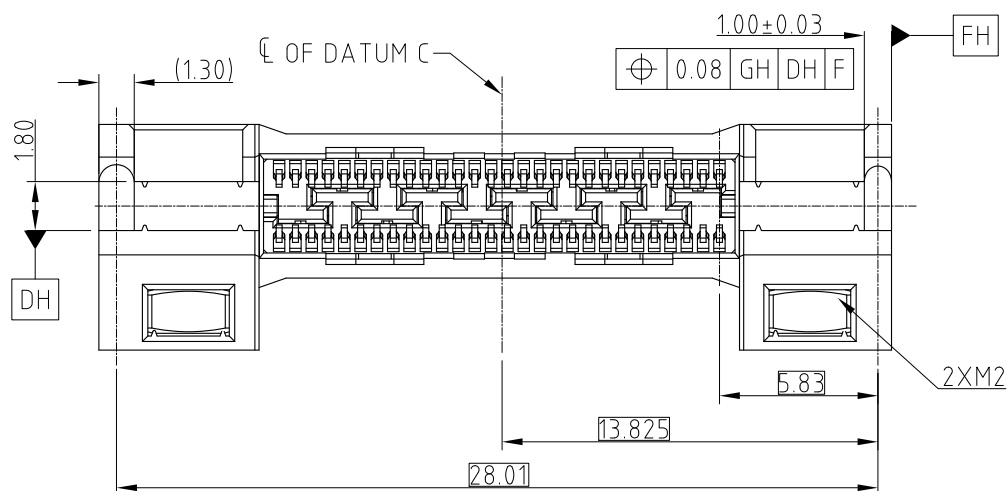
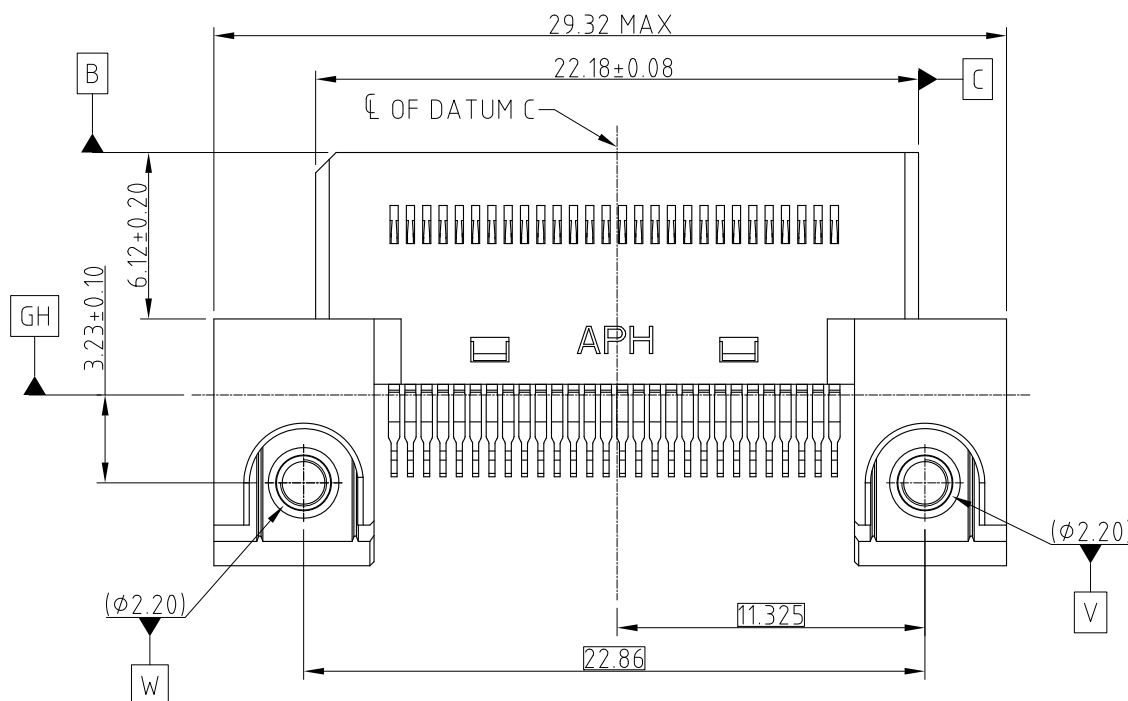
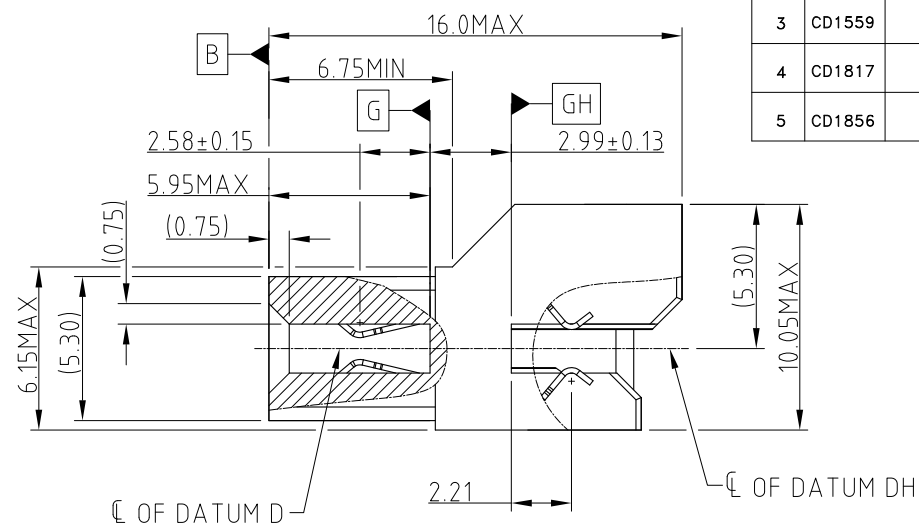
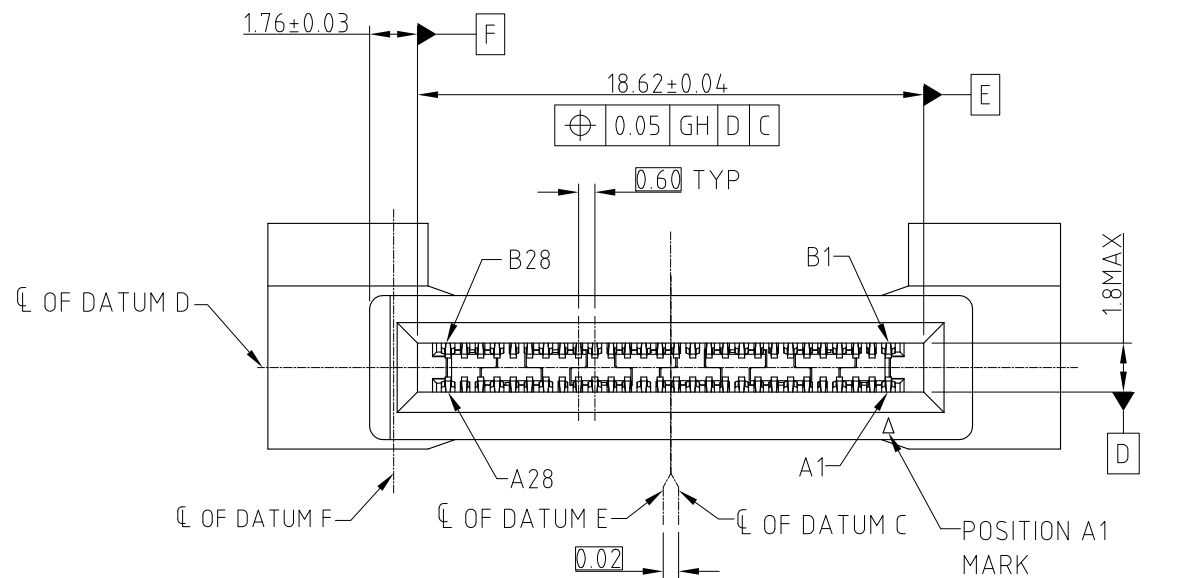


This document is the property of Amphenol Corporation and is delivered on the express condition that it is not to be disclosed, reproduced or used, in whole or in part, for manufacture or sale by anyone other than Amphenol Corporation without its prior consent, & that no right is granted to disclose or to use any information in this document.

# CUSTOMER DRAWING

## REVISIONS

SYM	ECN	DESCRIPTION	DATE	APPROVED
1	CDXXXX	PRELIMINARY PROPOSAL	Aug.16,2018	YH
2	CDXXXX	REMOVED PROPOSAL DRAWING	Aug.21,2018	YH
3	CD1559	UPDATED BY SFF TA 1002 REV 1.1.3	Nov.08,2018	YH
4	CD1817	CHANGE NUT FROM STANDARD TO RECTANGLE AND ADD PACKING	Jul.12,2019	YH
5	CD1856	STANDARDIZE THE WAFER CONSTRUCTURE	Sep.24,2019	YH



### NOTE:

- MATERIAL:  
HOUSING: HIGH TEMPERATURE THERMOPLASTIC BLACK UL94-V0  
CONTACT: COPPER ALLOY  
NUT: STAINLESS STEEL
- PLATING:  
CONTACT: MATING AREA: Au THICKNESS PLEASE REFER TO P/N SYSTEM OVER 1.27-2.54 μm NICKEL UNDERPLATED  
SOLDER AREA: 1.27 μm MIN TIN OVER 1.27-2.54 μm NICKEL UNDERPLATED
- ELECTRICAL PERFORMANCE:  
RATED CURRENT: 1.1A/PIN UP TO 12PINS  
LLCR: 30mΩ MAX, DELTA 15 mΩ.  
INSULATION RESISTANCE: 1000MΩ MIN
- DURABILITY: 200 CYCLES.
- MATERIAL SHOULD BE FULFILLED AMPHENOL SPEC#S-SN-002 AND S-SN-004
- ORDERING PN: REFER TO THE PN SYSTEM: ME100561340110X

- PLATING SPEC
- 0.76um Au
  - 0.38um Au
  - GOLD FLASH
  - PdNi 0.76um+G/F

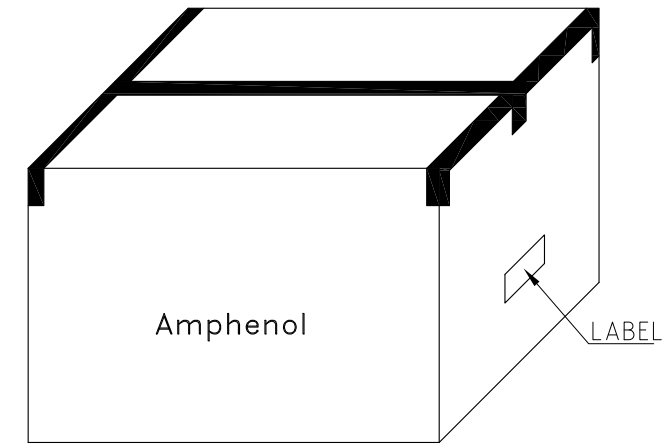
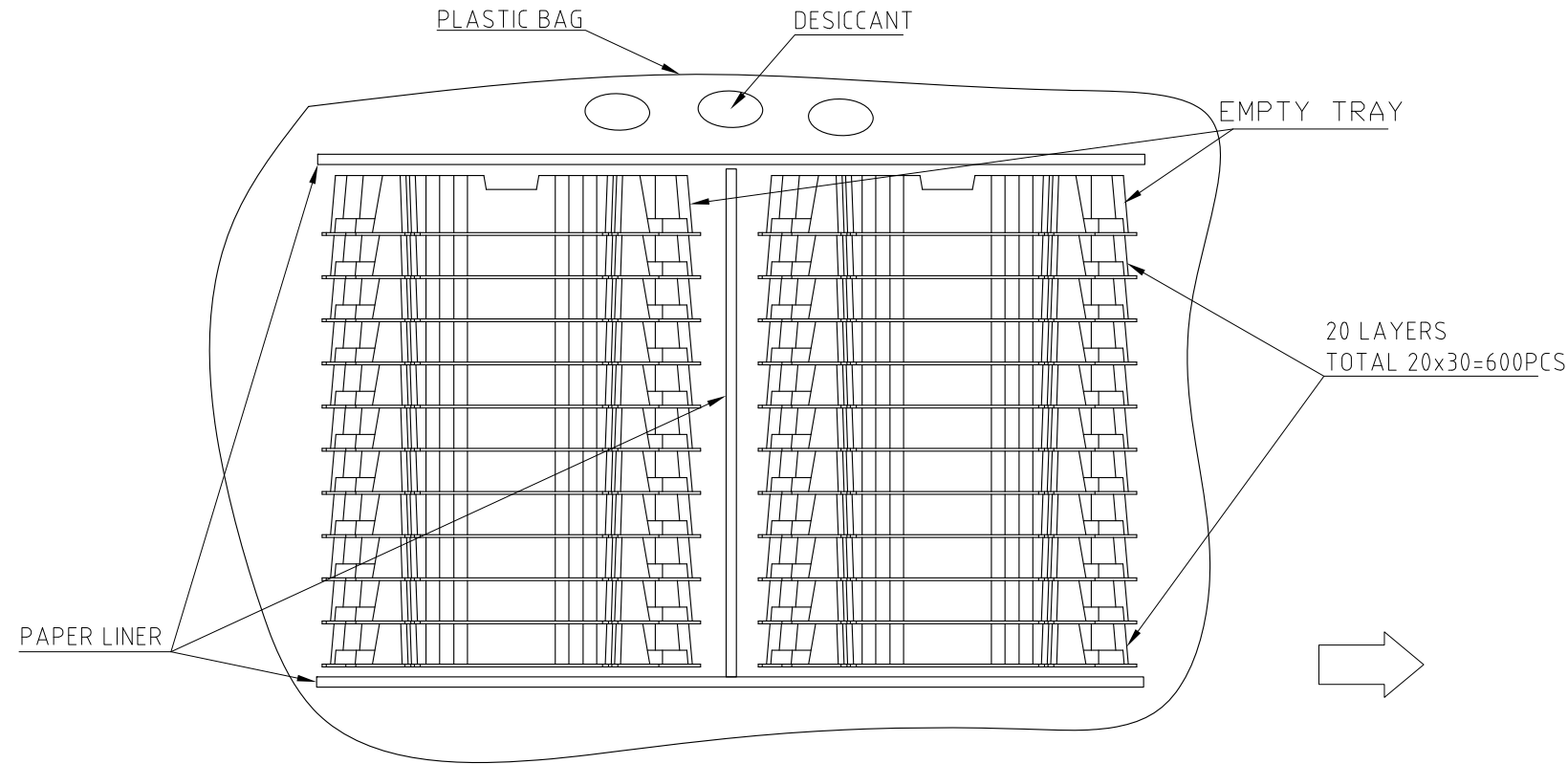
UNLESS OTHERWISE SPECIFIED TOLERANCES		APPROVAL	DATE	Amphenol	
	U.S. METRIC	DRAWN	Teng.Cao		
.X	+/- 0.25	CHECKED	Ly.Yi	Sep.24,2019	TITLE MINI COOL EDGE CONNECTOR 56P S/M MATE 1.57 HOST PCB
.XX	+/- 0.20	APPROVED			
.XXX	+/- 0.15	DRAWING FILE : INTERNAL\DRAWING\ME\C ME100561340110X			SIZE
FRACTIONS +/-	5°	REMOVE SHARP EDGES			DRAWING NO.
ANGLES +/-		DIMENSIONS			REV.
FOR MATERIALS AND FINISHES SEE NOTES		ANGLE OF PROJECTION			A3
REMOVE SHARP EDGES		SCALE			NONE
DIMENSIONS		SHEET 1 OF 3			
—U.S.—	INCHES				
(METRIC)	(mm)				



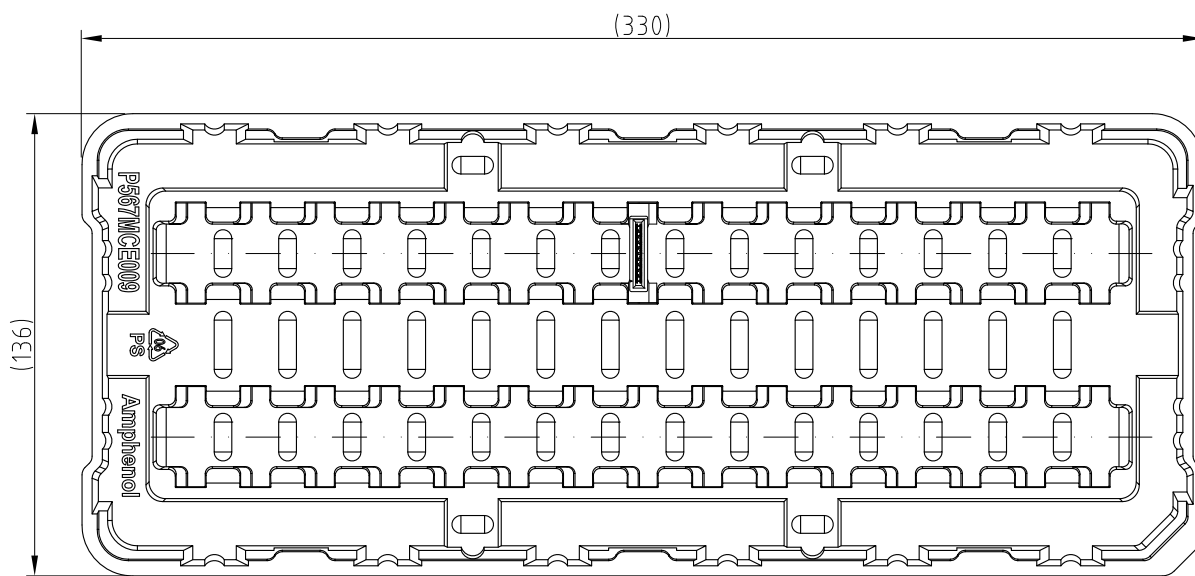
This document is the property of Amphenol Corporation and is delivered on the express condition that it is not to be disclosed, reproduced or used, in whole or in part, for manufacture or sale by anyone other than Amphenol Corporation without its prior consent, & that no right is granted to disclose or to use any information in this document.

CUSTOMER DRAWING

REVISIONS				
SYM	ECN	DESCRIPTION	DATE	APPROVED
		SEE SHEET 1		



30 CONNECTORS / TRAY



UNLESS OTHERWISE SPECIFIED TOLERANCES		APPROVAL	DATE	Amphenol		
	U.S. METRIC	DRAWN	Teng.Cao			Sep.24,2019
.X +/-	0.25	CHECKED	Ly.Yi			Sep.24,2019
.XX +/-	0.20	APPROVED			TITLE	
.XXX +/-	0.15				MINI COOL EDGE CONNECTOR	
FRACTIONS +/-					56P S/M MATE 1.57 HOST PCB	
ANGLES +/-	5°				SIZE	
FOR MATERIALS AND FINISHES SEE NOTES		DRAWING FILE :	INTERNAL\DRAWING\ME\C ME100561340110X			
REMOVE SHARP EDGES		ANGLE OF PROJECTION	DRAWING NO.			
DIMENSIONS			REV.			
—U.S.—	INCHES		A3 C ME100561340110X			
(METRIC)	(mm)		5			
		SCALE	NONE	SHEET 3 OF 3		