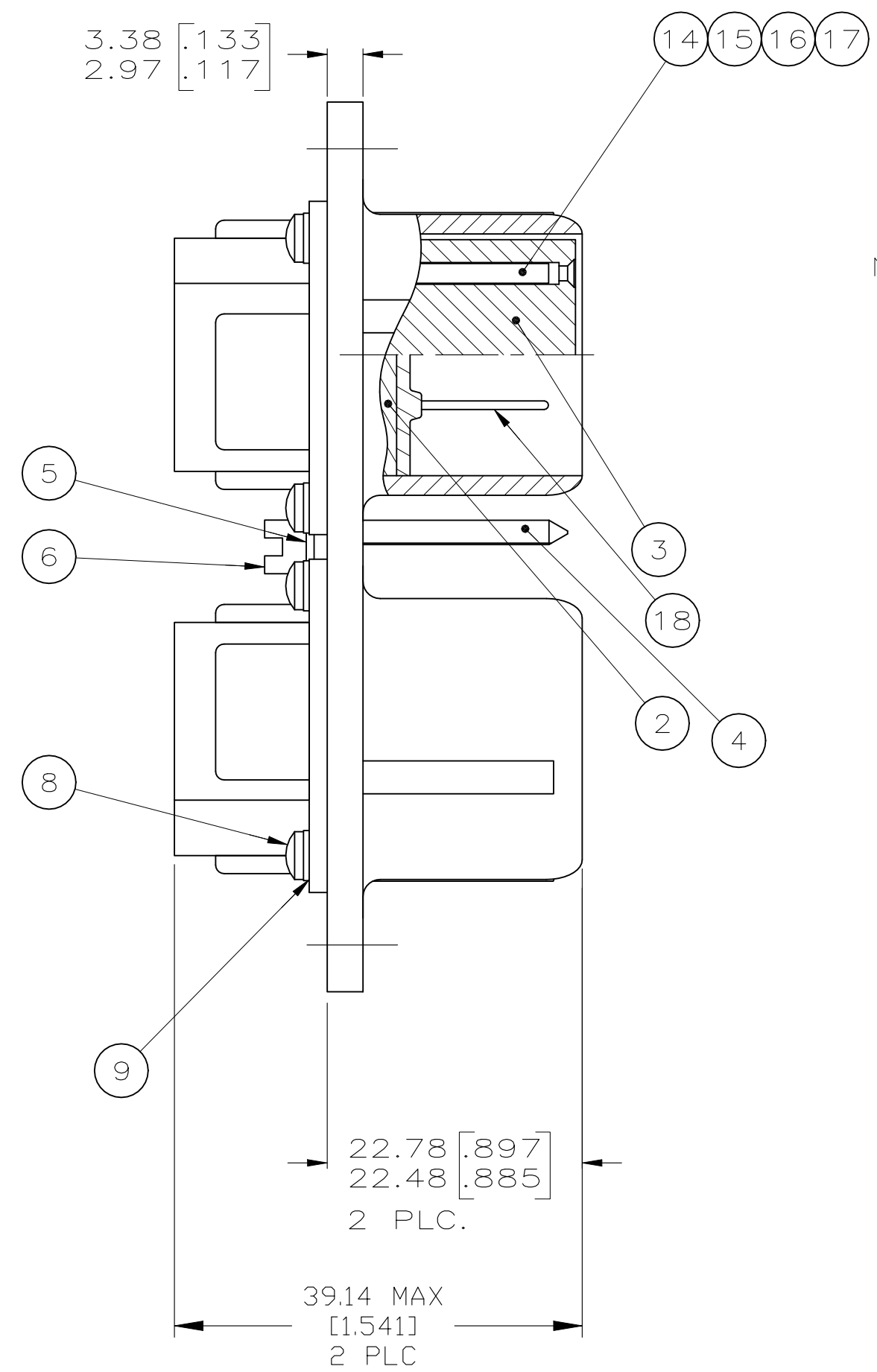
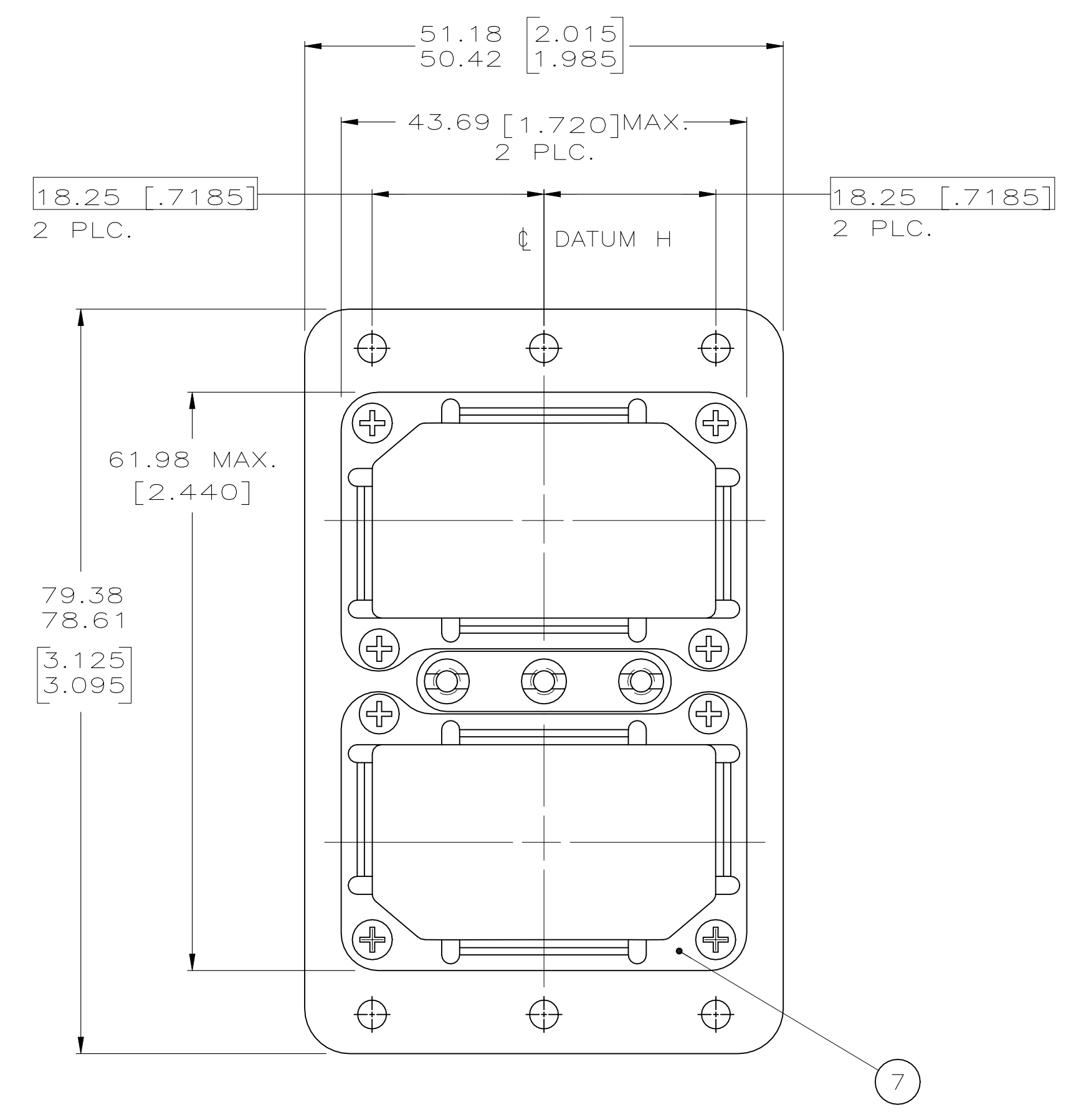
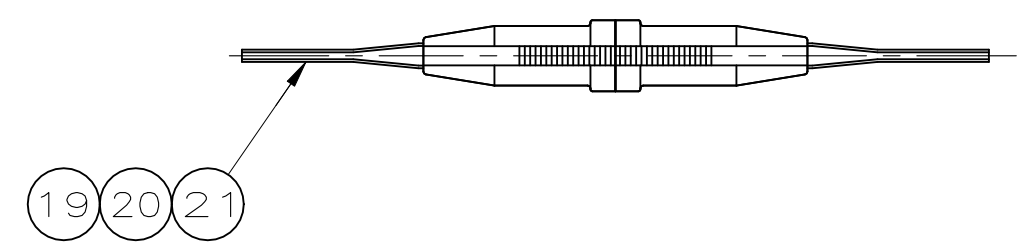
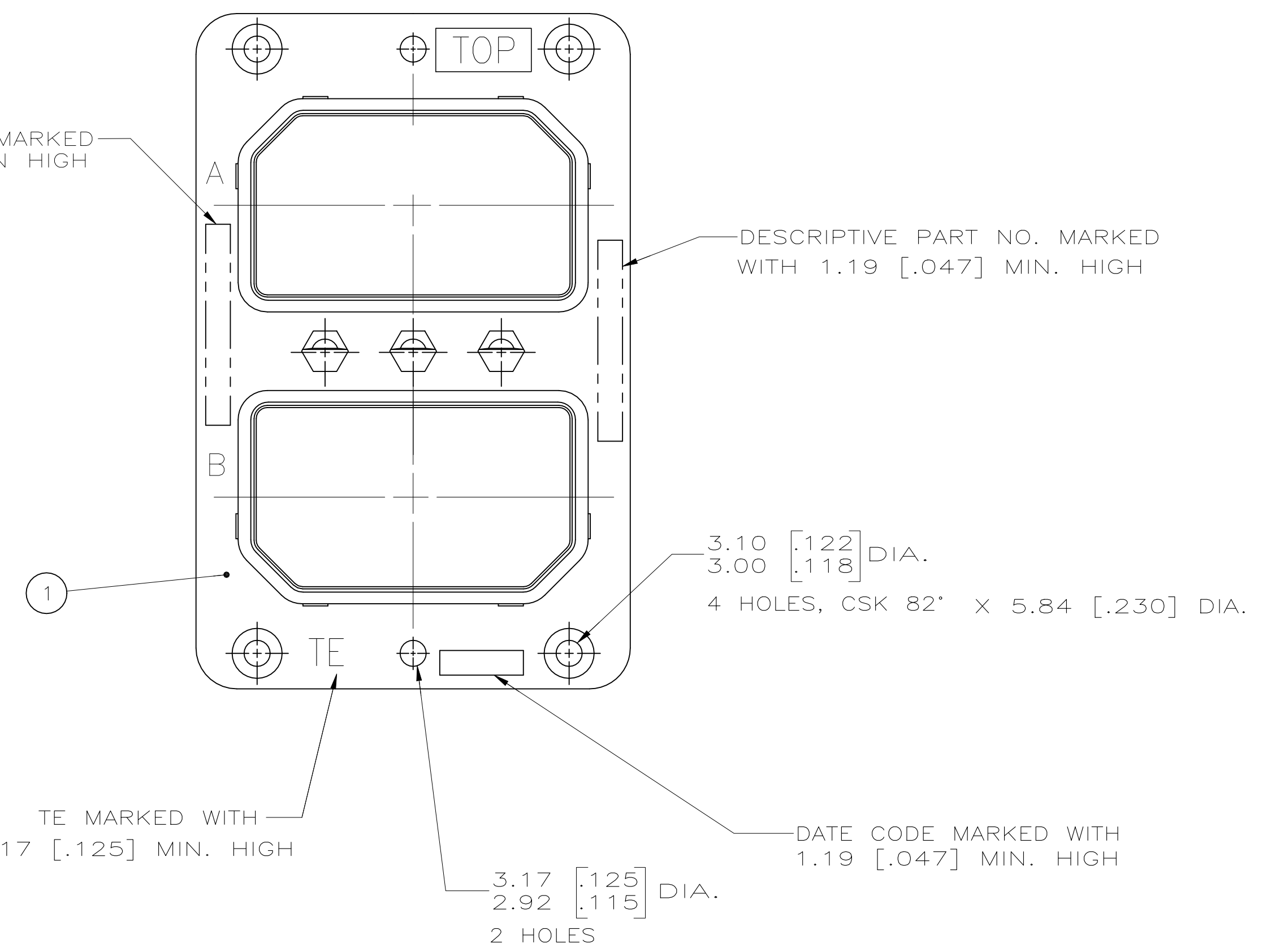


REVISIONS					
P	LTR	DESCRIPTION	DATE	DRN	APVD
E		REVISED PER ECO 20-015430	5-26=21	CT	RL



NUMERICAL (ORDERING) P/N MARKED WITH 1.19 [.047] MIN HIGH



- CONTACTS SHOWN LOADED FOR ILLUSTRATION ONLY; ARE INCLUDED IN A CONTAINER WITHIN CONNECTOR PACKAGE FOR SHIPMENT.
- FOR INSERT ARRANGEMENTS AND DIMENSIONS, SEE TABLES ON SHEET 2 OF 2.
- DIMENSIONS IN BRACKETS ARE IN INCHES.
- MATERIAL & FINISH:**

SHELL: DIE CAST ALUMINUM PER QQ-A-591 OR ASTM B211, 6061-T6/6511 OR ASTM B209 2024-T4/T351  
 FINISH: PLATED CADMIUM PER QQ-P-416, TYPE 1 CLASS 2 YELLOW CHROMATE CONVERSION

INSULATOR, HARD: EPOXY PER MIL-M-24325  
 INSULATOR, SOFT: FLUOROSILICONE RUBBER; COLOR: BLUE  
 GROMMET PROTECTOR: ALUMINUM ALLOY, FINISH: BLUE EPOXY  
 SCREWS & WASHERS: STAINLESS STEEL; PASSIVATED  
 POLARIZING POSTS & NUTS: STAINLESS STEEL  
 DUST CAP: CLEAR VINYL

**METRIC**

THIS DRAWING IS A CONTROLLED DOCUMENT.		DIN MARK HOFFECKER 3-11-87	TE Connectivity Ltd.	
DIMENSIONS: mm [INCHES]	TOLERANCES UNLESS OTHERWISE SPECIFIED:	CHK LARRY LAWNER 3-11-87	APVD LARRY LAWNER 3-11-87	NAME PLUG CONNECTOR KIT, ARINC 404, DUAL INSERT
	0 PLC ± - 1 PLC ± - 2 PLC ± - 3 PLC ± - 4 PLC ± - ANGLES ± 0°30'	APPLICATION SPEC	SIZE A1	CAGE CODE 00779
MATERIAL - 4	FINISH - 4	WEIGHT 0	DRAWING NO C=213441	RESTRICTED TO -
CUSTOMER DRAWING		SCALE 2:1	SHEET 1 OF 2	REV E

REVIEWS		DATE	REV. NO.
DATE	DESCRIPTION	-	-
1	SEE SHEET 1	-	-

ITEM NO.	DESCRIPTION	QTY	UNIT	REVISION	DATE	BY	CHKD	APPROV
106S	106S	1		1				
106S	106S	1		2				
106P	106P	1		3				
106P	106P	1		4				
106P	106P	1		5				
67S	67S	1		6				
67S	67S	1		7				
67S	67S	1		8				
67S	67S	1		9				
67S	67S	1		10				
67S	67S	1		11				
67S	67S	1		12				
67S	67S	1		13				
67S	67S	1		14				
67S	67S	1		15				
67S	67S	1		16				
67S	67S	1		17				
67S	67S	1		18				
67S	67S	1		19				
67S	67S	1		20				
67S	67S	1		21				
67S	67S	1		22				
67S	67S	1		23				
67S	67S	1		24				
67S	67S	1		25				
67S	67S	1		26				
67S	67S	1		27				
67S	67S	1		28				
67S	67S	1		29				
67S	67S	1		30				
67S	67S	1		31				
67S	67S	1		32				
67S	67S	1		33				
67S	67S	1		34				
67S	67S	1		35				
67S	67S	1		36				
67S	67S	1		37				
67S	67S	1		38				
67S	67S	1		39				
67S	67S	1		40				
67S	67S	1		41				
67S	67S	1		42				
67S	67S	1		43				
67S	67S	1		44				
67S	67S	1		45				
67S	67S	1		46				
67S	67S	1		47				
67S	67S	1		48				
67S	67S	1		49				
67S	67S	1		50				
67S	67S	1		51				
67S	67S	1		52				
67S	67S	1		53				
67S	67S	1		54				
67S	67S	1		55				
67S	67S	1		56				
67S	67S	1		57				
67S	67S	1		58				
67S	67S	1		59				
67S	67S	1		60				
67S	67S	1		61				
67S	67S	1		62				
67S	67S	1		63				
67S	67S	1		64				
67S	67S	1		65				
67S	67S	1		66				
67S	67S	1		67				
67S	67S	1		68				
67S	67S	1		69				
67S	67S	1		70				
67S	67S	1		71				
67S	67S	1		72				
67S	67S	1		73				
67S	67S	1		74				
67S	67S	1		75				
67S	67S	1		76				
67S	67S	1		77				
67S	67S	1		78				
67S	67S	1		79				
67S	67S	1		80				
67S	67S	1		81				
67S	67S	1		82				
67S	67S	1		83				
67S	67S	1		84				
67S	67S	1		85				
67S	67S	1		86				
67S	67S	1		87				
67S	67S	1		88				
67S	67S	1		89				
67S	67S	1		90				
67S	67S	1		91				
67S	67S	1		92				
67S	67S	1		93				
67S	67S	1		94				
67S	67S	1		95				
67S	67S	1		96				
67S	67S	1		97				
67S	67S	1		98				
67S	67S	1		99				
67S	67S	1		100				
67S	67S	1		101				
67S	67S	1		102				
67S	67S	1		103				
67S	67S	1		104				
67S	67S	1		105				
67S	67S	1		106				
67S	67S	1		107				
67S	67S	1		108				
67S	67S	1		109				
67S	67S	1		110				
67S	67S	1		111				
67S	67S	1		112				
67S	67S	1		113				
67S	67S	1		114				
67S	67S	1		115				
67S	67S	1		116				
67S	67S	1		117				
67S	67S	1		118				
67S	67S	1		119				
67S	67S	1		120				
67S	67S	1		121				
67S	67S	1		122				
67S	67S	1		123				
67S	67S	1		124				
67S	67S	1		125				
67S	67S	1		126				
67S	67S	1		127				
67S	67S	1		128				
67S	67S	1		129				
67S	67S	1		130				
67S	67S	1		131				
67S	67S	1		132				
67S	67S	1		133				
67S	67S	1		134				
67S	67S	1		135				
67S	67S	1		136				
67S	67S	1		137				
67S	67S	1		138				
67S	67S	1		139				
67S	67S	1		140				
67S	67S	1		141				
67S	67S	1		142				
67S	67S	1		143				
67S	67S	1		144				
67S	67S	1		145				
67S	67S	1		146				
67S	67S	1		147				
67S	67S	1		148				
67S	67S	1		149				
67S	67S	1		150				
67S	67S	1		151				
67S	67S	1		152				
67S	67S	1		153				
67S	67S	1		154				
67S	67S	1		155				
67S	67S	1		156				
67S	67S	1		157				
67S	67S	1		158				
67S	67S	1		159				
67S	67S	1		160				
67S	67S	1		161				
67S	67S	1		162				
67S	67S	1		163				
67S	67S	1		164				
67S	67S	1		165				
67S	67S	1		166				
67S	67S	1		167				
67S	67S	1		168				
67S	67S	1		169				
67S	67S	1		170				
67S	67S	1		171				
67S	67S	1		172				
67S	67S	1		173				
67S	67S	1		174				
67S	67S	1		175				
67S	67S	1		176				
67S	67S	1		177				
67S	67S	1		178				
67S	67S	1		179				
67S	67S	1		180				
67S	67S	1		181				
67S	67S	1		182				
67S	67S	1		183				
67S	67S	1		184				