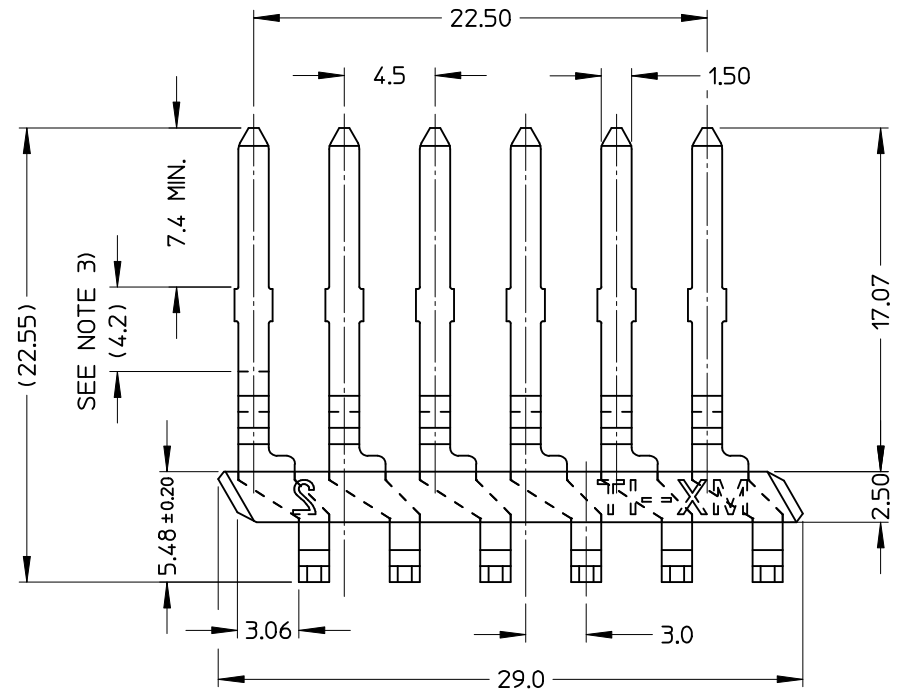
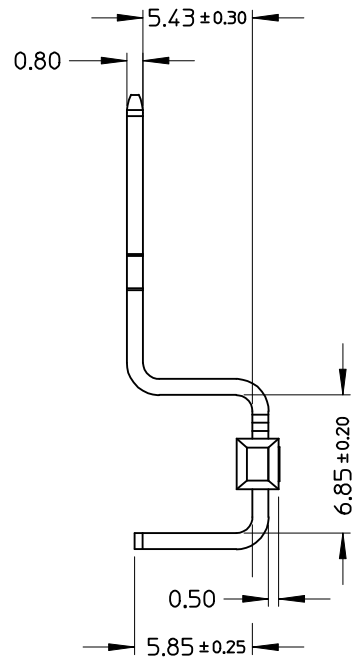
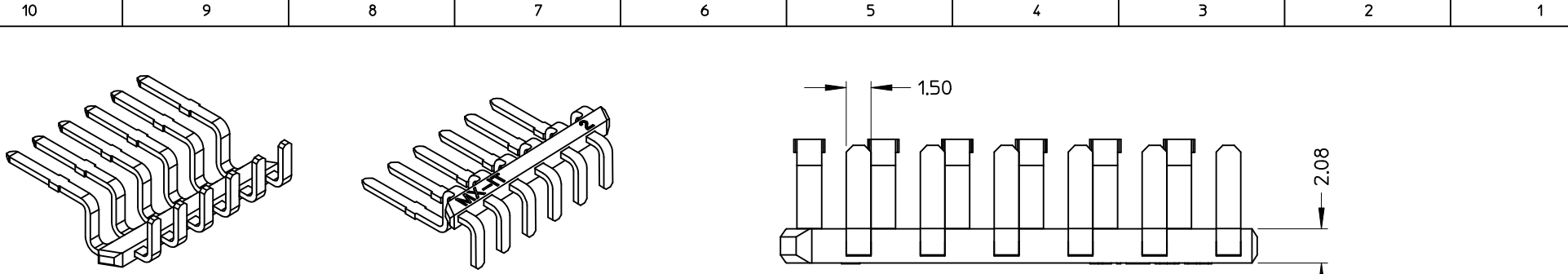


- NOTES:
- CONTACT MATERIAL: COPPER ALLOY UNS C21000
TIN POST PLATED 5-8um
 - HOUSING MATERIAL: BLACK LCP G.F.
 - BARE EDGE AND 0.30 MAX CUTOFF BURR OR UNDERCUT ALLOWABLE IN THIS LOCATION
 - PACKAGING: IN CARTON BOXES (400 CONNECTORS/BOX).
8 BOXES INTO A SHIPPING CARTON FOR TOTAL 3200 CONNECTORS (STD. PACKING QUANTITY)

STD. DESCR.: 6 CKT CONNECTOR

EC NO: Z2008-0142 DRWN: SBARBIER 2008/03/18 CHKD: LSANTOSSO 2008/03/18 APPR: FBISELLO 2008/03/27	QUALITY SYMBOLS	GENERAL TOLERANCES (UNLESS SPECIFIED)		DIMENSION STYLE	SCALE	DESIGN UNITS	FIRST ANGLE PROJECTION	
	$\nabla = 0$ $\nabla \square = 0$	mm	INCH	MM ONLY	4:1	METRIC		
		4 PLACES ± ---	± ---	DRAWN BY	DATE	TITLE		
		3 PLACES ± ---	± ---	SBARBIER	2008/03/13	6 CKT HEADER		
	2 PLACES ± 0.15	± ---	CHECKED BY	DATE				
	1 PLACE ± 0.2	± ---	LSANTOSSO	2008/03/13				
			APPROVED BY	DATE				
		ANGULAR ± 3 °	FBISELLO	2008/03/13				
			MATERIAL NO.	94241-1006	DOCUMENT NO.			
					SD-94241-001			
							SHEET NO.	
							1 OF 1	
					THIS DRAWING CONTAINS INFORMATION THAT IS PROPRIETARY TO MOLEX INCORPORATED AND SHOULD NOT BE USED WITHOUT WRITTEN PERMISSION			



- NOTES:**
- CONTACT MATERIAL: COPPER ALLOY UNS C21000
TIN POST PLATED 5-8um
 - HOUSING MATERIAL: BLACK LCP G.F.
 - BARE EDGE AND 0.30 MAX CUTOFF BURR OR UNDERCUT ALLOWABLE IN THIS LOCATION
 - PACKAGING: IN CARTON BOXES (400 CONNECTORS/BOX). 8 BOXES INTO A SHIPPING CARTON FOR TOTAL 3200 CONNECTORS (STD. PACKING QUANTITY)

STD. DESCR.: 6 CKT CONNECTOR

EC NO: Z2008-0142 DRWN: SBARBIER 2008/03/18 CHKD: LSANTOSSO 2008/03/18 APPR: FBISELLO 2008/03/27	QUALITY SYMBOLS	GENERAL TOLERANCES (UNLESS SPECIFIED)	DIMENSION STYLE	SCALE	DESIGN UNITS	FIRST ANGLE PROJECTION															
	$\nabla = 0$ $\sphericalangle = 0$	<table border="1"> <tr> <th></th> <th>mm</th> <th>INCH</th> </tr> <tr> <td>4 PLACES</td> <td>± ---</td> <td>± ---</td> </tr> <tr> <td>3 PLACES</td> <td>± ---</td> <td>± ---</td> </tr> <tr> <td>2 PLACES</td> <td>± 0.15</td> <td>± ---</td> </tr> <tr> <td>1 PLACE</td> <td>± 0.2</td> <td>± ---</td> </tr> </table>		mm	INCH	4 PLACES	± ---	± ---	3 PLACES	± ---	± ---	2 PLACES	± 0.15	± ---	1 PLACE	± 0.2	± ---	MM ONLY	4:1	METRIC	
		mm	INCH																		
	4 PLACES	± ---	± ---																		
3 PLACES	± ---	± ---																			
2 PLACES	± 0.15	± ---																			
1 PLACE	± 0.2	± ---																			
DESCRIPTION	DRAWN BY: SBARBIER CHECKED BY: LSANTOSSO APPROVED BY: FBISELLO	DATE: 2008/03/18 DATE: 2008/03/13 DATE: 2008/03/13	TITLE: 6 CKT HEADER																		
REV: A	DRAFT WHERE APPLICABLE MUST REMAIN WITHIN DIMENSIONS	ANGULAR ± 3 °	MATERIAL NO.: 94241-1006 SIZE: A3	DOCUMENT NO.: SD-94241-001	MOLEX INCORPORATED SHEET NO.: 1 OF 1																