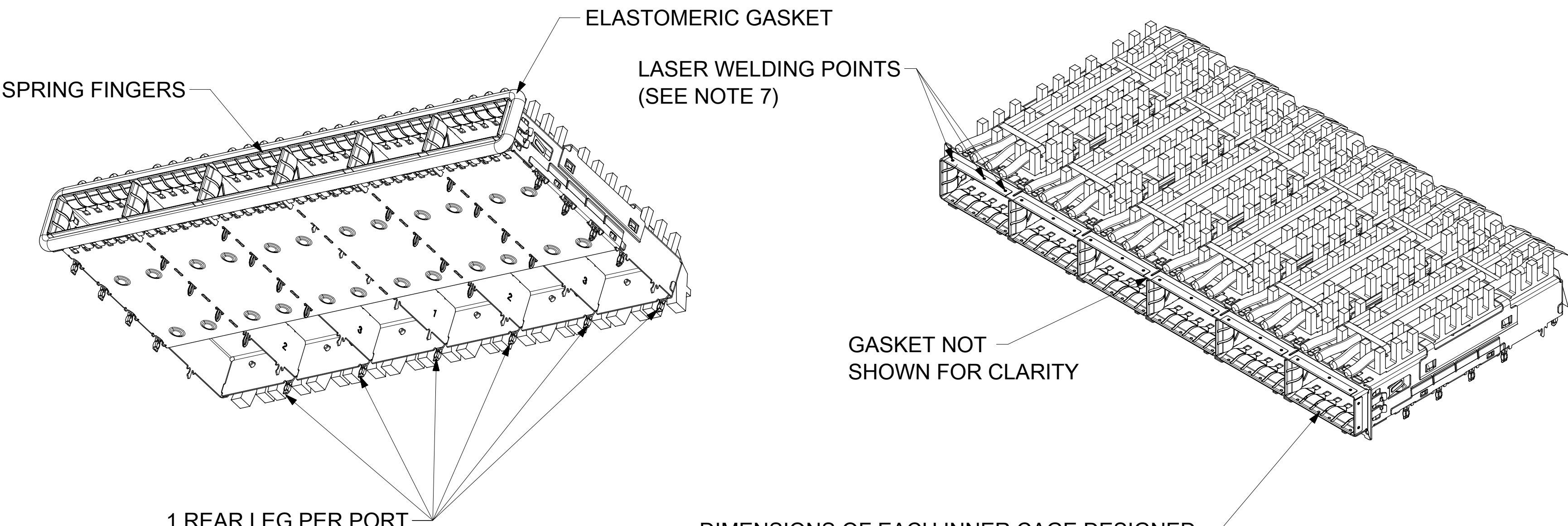
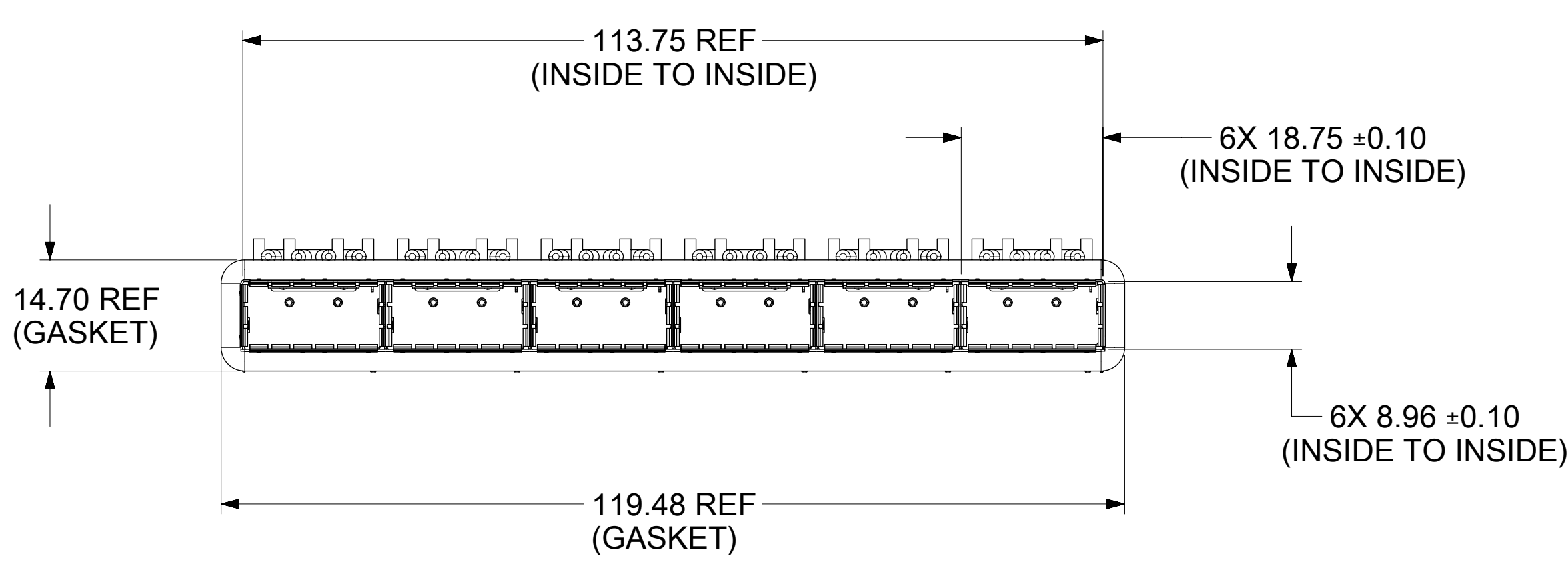
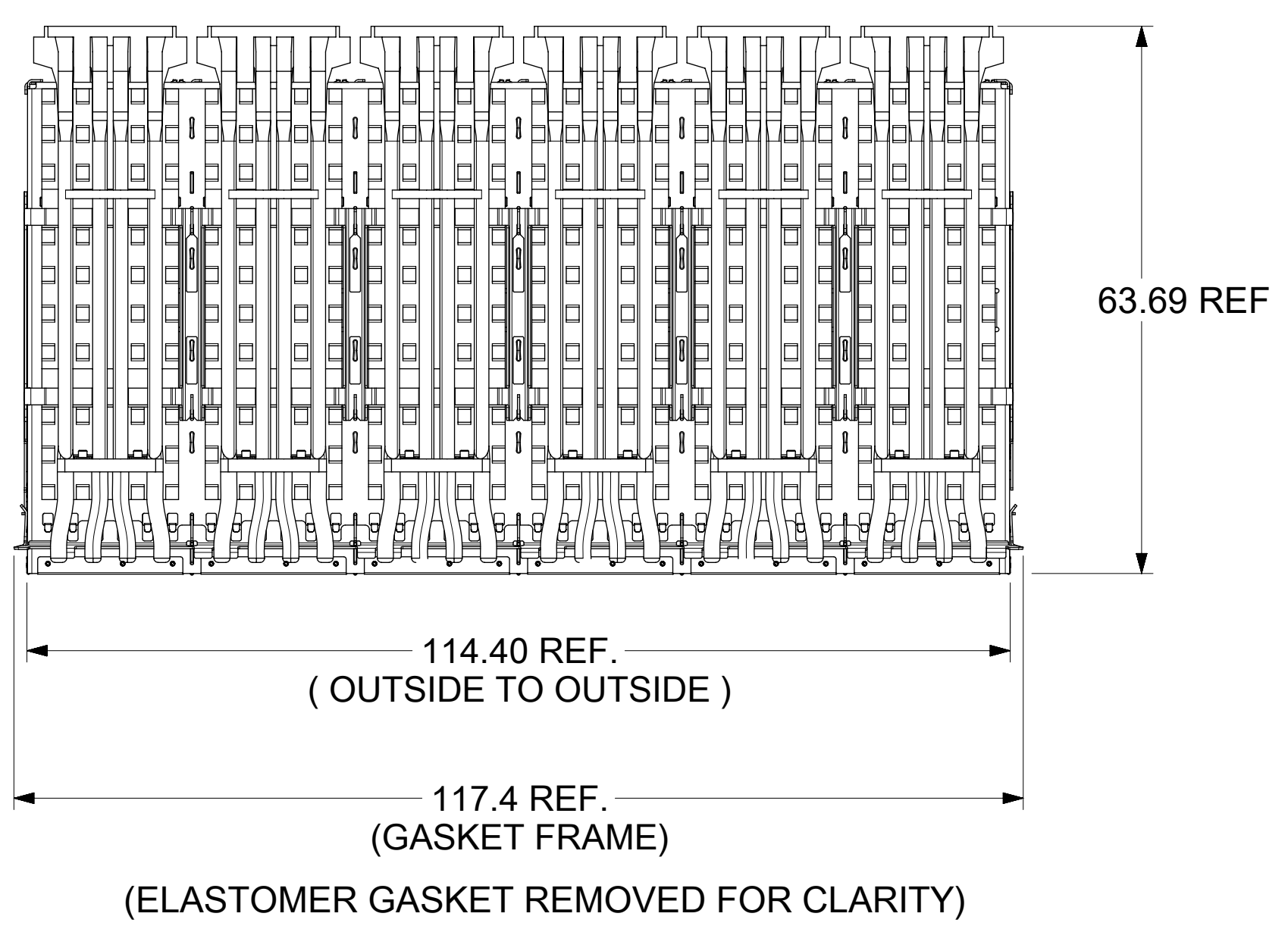
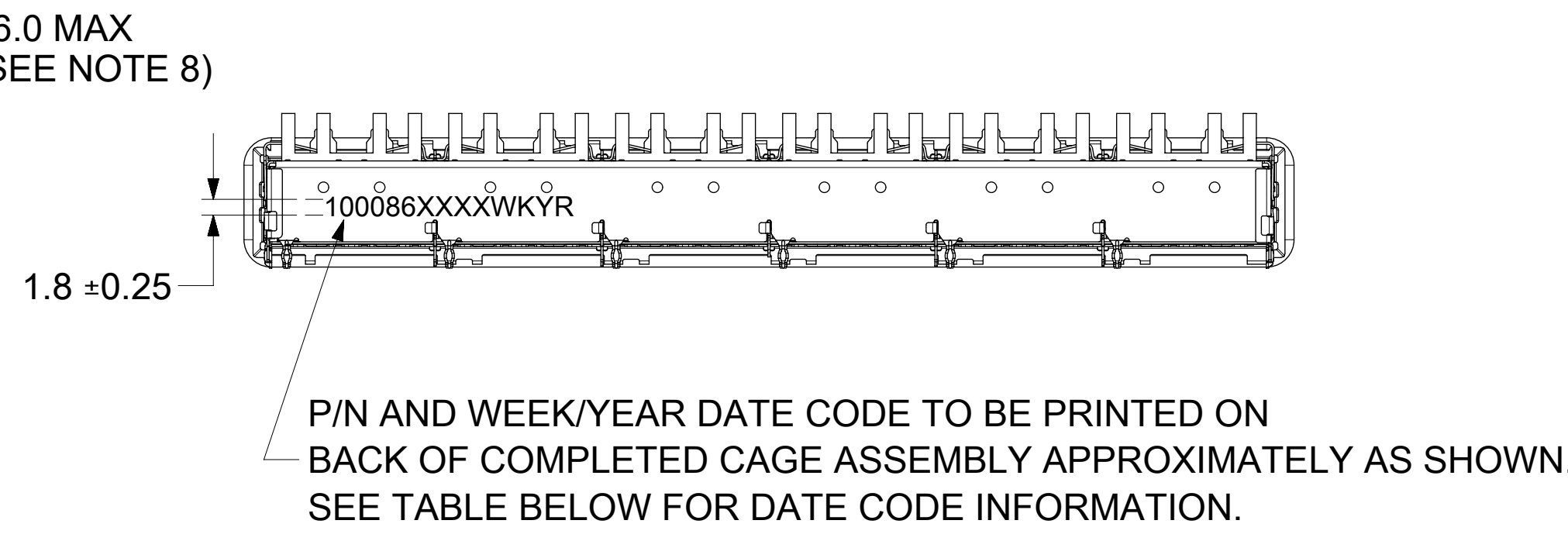
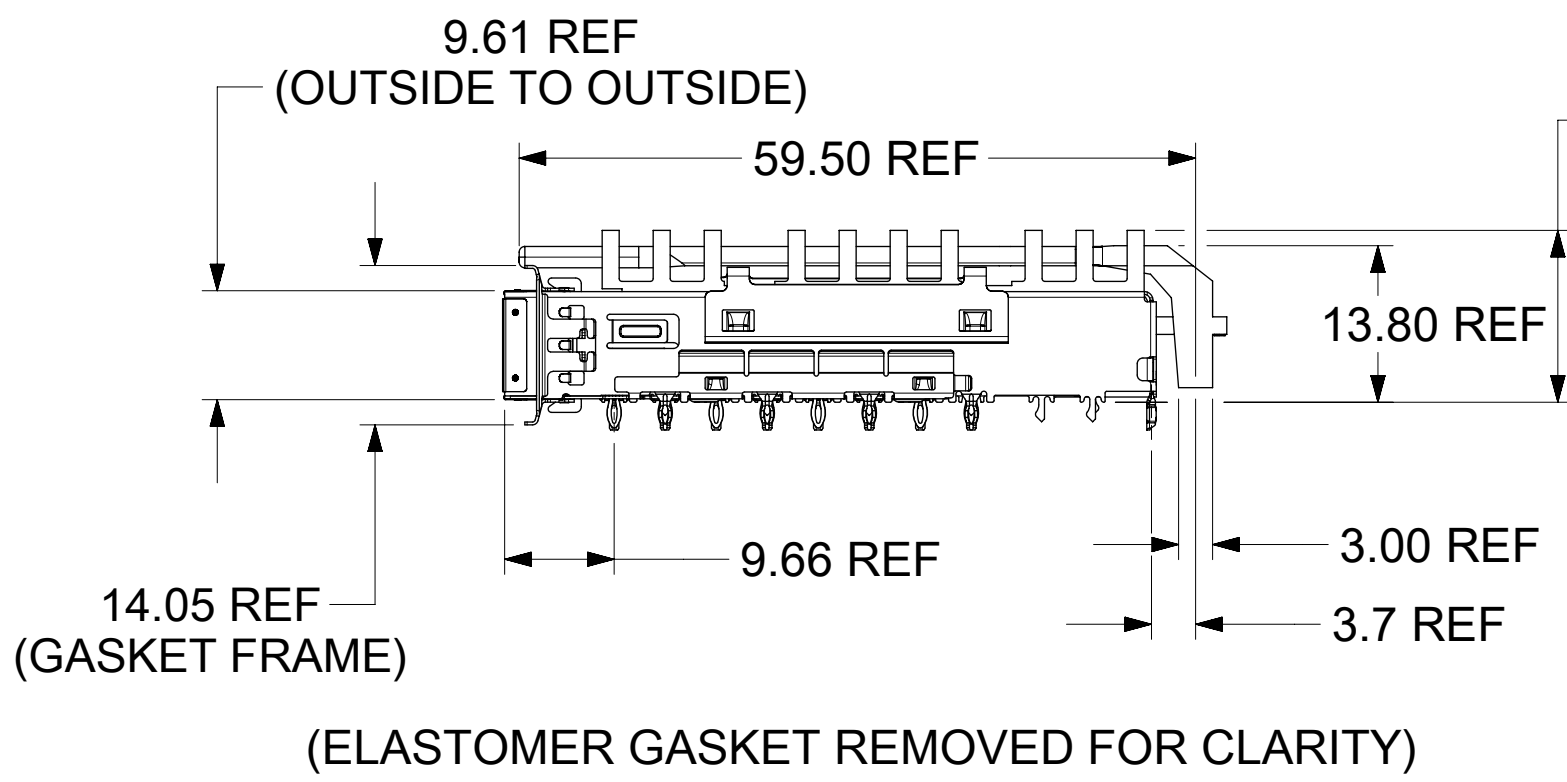


BASE CAGE DETAILS

1000863747 SHOWN



DIMENSIONS OF EACH INNER CAGE DESIGNED TO FUNCTION WITH QUAD SMALL FORM-FACTOR (zQSFP+) TRANSCEIVER

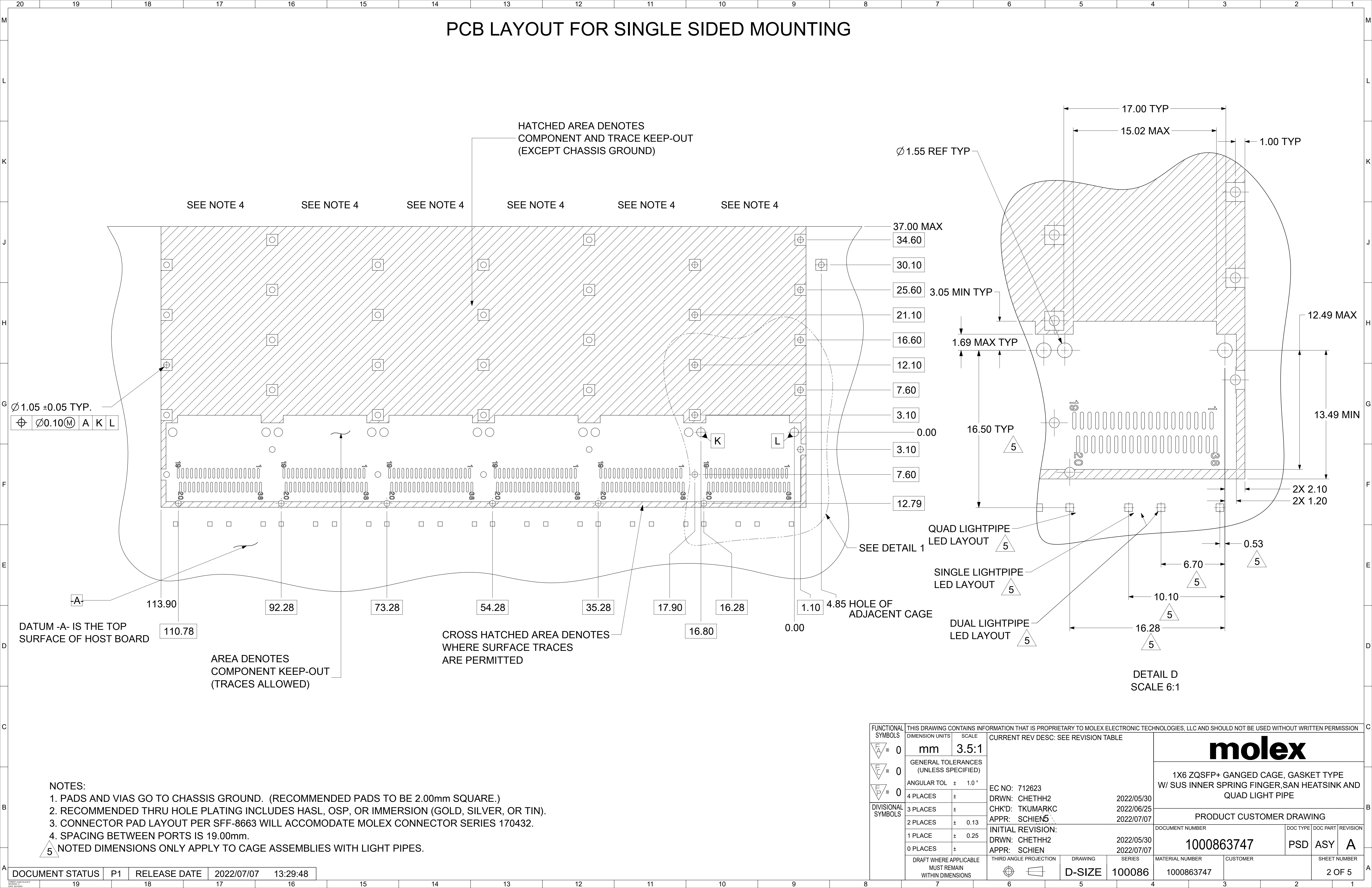


- NOTES:
- MATERIAL:
CAGE: STAINLESS STEEL
CENTER WALLS: STAINLESS STEEL
SPRING FINGERS: STAINLESS STEEL
GASKET FLANGE: STAINLESS STEEL
HEAT SINKS: NICKEL PLATED ALUMINUM
HEAT SINK CLIP: STAINLESS STEEL
LIGHT PIPES: POLYCARBONATE (UL 94-V-0)
GASKET: ELASTOMER (UL 94-V-0)
 - DURING INCOMING INSPECTION, CAGE LEG LOCATIONS AND STRAIGHTNESS MUST BE CHECKED USING APPROPRIATE GO - NO GO GAGE
 - DURING INCOMING INSPECTION, CAGE MUST BE INSPECTED TO MAKE SURE LEG CONFIGURATIONS AND PART NUMBERS ARE CORRECT.
 - PARTS TO BE INSPECTED PER MOLEX COSMETIC SPEC WI-HP-7-2774 (CLASS B UNLESS OTHERWISE SPECIFIED)
 - PRESS-FIT LEGS 2.44mm LONG -
1.57mm MINIMUM PCB THICKNESS FOR SINGLE SIDED USE.
2.70mm MINIMUM PCB THICKNESS FOR BELLY TO BELLY USE.
 - NO RoHS EXEMPTIONS.
 - WELD SPOTS MAY SHOW SLIGHT MATERIAL DISCOLORATION.
 - HEIGHT OF HEAT SINK WITH MODULE INSERTED. DIMENSION MAY BE LESS DUE TO MODULE AND HEAT SINK VARIATIONS

WEEK/YEAR DATE CODE TABLE	
WK	WEEK OF THE YEAR 01 THRU 52 (EXAMPLE: 01= FIRST WEEK OF YEAR 52= LAST WEEK OF YEAR)
YR	22, 23, 24 ETC.. (EXAMPLE: YEAR 2022= 22)

FUNCTIONAL SYMBOLS $F_A = 0$ $F_C = 0$ $F_D = 0$	THIS DRAWING CONTAINS INFORMATION THAT IS PROPRIETARY TO MOLEX ELECTRONIC TECHNOLOGIES, LLC AND SHOULD NOT BE USED WITHOUT WRITTEN PERMISSION	SCALE	CURRENT REV DESC: SEE REVISION TABLE	
	DIMENSION UNITS	3:2		
	GENERAL TOLERANCES (UNLESS SPECIFIED)		EC NO: 712623	
	ANGULAR TOL ± 1.0°		DRWN: CHETHH2	2022/05/30
DIVISIONAL SYMBOLS	4 PLACES ±	CHK'D: TKUMARKC	2022/06/25	
	3 PLACES ±	APPR: SCHIEN	2022/07/07	
	2 PLACES ± 0.13	INITIAL REVISION:		
	1 PLACE ± 0.25	DRWN: CHETHH2	2022/05/30	
0 PLACES ±	APPR: SCHIEN	2022/07/07		
DRAFT WHERE APPLICABLE MUST REMAIN WITHIN DIMENSIONS		THIRD ANGLE PROJECTION	DRAWING	SERIES
			D-SIZE	100086
			MATERIAL NUMBER	CUSTOMER
			1000863747	
			SHEET NUMBER	
			1 OF 5	

PCB LAYOUT FOR SINGLE SIDED MOUNTING



HATCHED AREA DENOTES COMPONENT AND TRACE KEEP-OUT (EXCEPT CHASSIS GROUND)

SEE NOTE 4 SEE NOTE 4 SEE NOTE 4 SEE NOTE 4 SEE NOTE 4 SEE NOTE 4

Ø 1.05 ± 0.05 TYP.
 ⊕ Ø0.10 (M) A K L

DATUM -A- IS THE TOP SURFACE OF HOST BOARD

AREA DENOTES COMPONENT KEEP-OUT (TRACES ALLOWED)

CROSS HATCHED AREA DENOTES WHERE SURFACE TRACES ARE PERMITTED

Ø 1.55 REF TYP

37.00 MAX

34.60

30.10

25.60

21.10

16.60

12.10

7.60

3.10

0.00

3.10

7.60

12.79

1.10

16.80

0.00

4.85 HOLE OF ADJACENT CAGE

SEE DETAIL 1

QUAD LIGHTPIPE LED LAYOUT

SINGLE LIGHTPIPE LED LAYOUT

DUAL LIGHTPIPE LED LAYOUT

16.50 TYP

1.69 MAX TYP

3.05 MIN TYP

17.00 TYP

15.02 MAX

1.00 TYP

12.49 MAX

13.49 MIN

2X 2.10

2X 1.20

0.53

6.70

10.10

16.28

DETAIL D
SCALE 6:1

- NOTES:
- PADS AND VIAS GO TO CHASSIS GROUND. (RECOMMENDED PADS TO BE 2.00mm SQUARE.)
 - RECOMMENDED THRU HOLE PLATING INCLUDES HASL, OSP, OR IMMERSION (GOLD, SILVER, OR TIN).
 - CONNECTOR PAD LAYOUT PER SFF-8663 WILL ACCOMODATE MOLEX CONNECTOR SERIES 170432.
 - SPACING BETWEEN PORTS IS 19.00mm.
 - NOTED DIMENSIONS ONLY APPLY TO CAGE ASSEMBLIES WITH LIGHT PIPES.

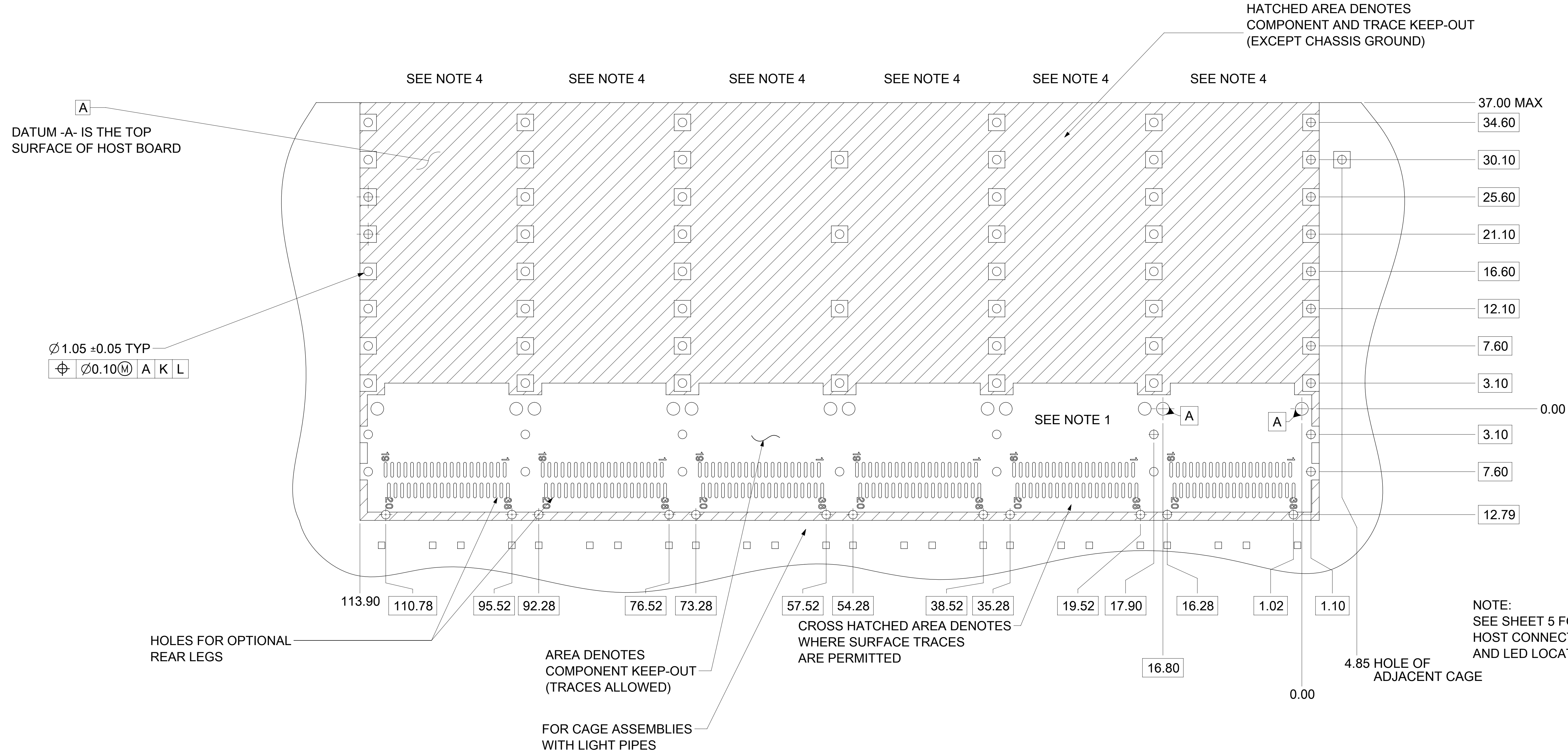
FUNCTIONAL SYMBOLS	THIS DRAWING CONTAINS INFORMATION THAT IS PROPRIETARY TO MOLEX ELECTRONIC TECHNOLOGIES, LLC AND SHOULD NOT BE USED WITHOUT WRITTEN PERMISSION		CURRENT REV DESC: SEE REVISION TABLE	
	FA = 0	mm	SCALE	3.5:1
DIVISIONAL SYMBOLS	FC = 0	GENERAL TOLERANCES (UNLESS SPECIFIED)		
	FD = 0	ANGULAR TOL ± 1.0°		
DRAFT WHERE APPLICABLE MUST REMAIN WITHIN DIMENSIONS	4 PLACES	±	EC NO: 712623	
	3 PLACES	±	DRWN: CHETHH2 2022/05/30	
	2 PLACES	± 0.13	CHK'D: TKUMARKC 2022/06/25	
	1 PLACE	± 0.25	APPR: SCHIEN5 2022/07/07	
THIRD ANGLE PROJECTION	0 PLACES	±	INITIAL REVISION:	
	DRAFT WHERE APPLICABLE MUST REMAIN WITHIN DIMENSIONS		DRWN: CHETHH2 2022/05/30	
DRAWING	SERIES		MATERIAL NUMBER	
	D-SIZE		100086	
SHEET NUMBER	CUSTOMER		DOCUMENT NUMBER	
	1000863747		1000863747	
PSD ASY A		DOC TYPE		REVISION
2 OF 5		CUSTOMER		REVISION

molex
 1X6 QZSFP+ GANGED CAGE, GASKET TYPE
 W/ SUS INNER SPRING FINGER, SAN HEATSINK AND
 QUAD LIGHT PIPE

PRODUCT CUSTOMER DRAWING
 1000863747
 PSD ASY A

1000863747
 2 OF 5

PCB LAYOUT FOR BELLY TO BELLY MOUNTING



- NOTES:**
1. PADS AND VIAS GO TO CHASSIS GROUND. (RECOMMENDED PADS TO BE 2.00mm SQUARE.)
 2. RECOMMENDED THRU HOLE PLATING INCLUDES HASL, OSP, OR IMMERSION (GOLD, SILVER, OR TIN).
 3. CONNECTOR PAD LAYOUT PER SFF-8663 WILL ACCOMODATE MOLEX CONNECTOR SERRIES 170432.
 4. SPACING BETWEEN PORTS IS 19.00mm.

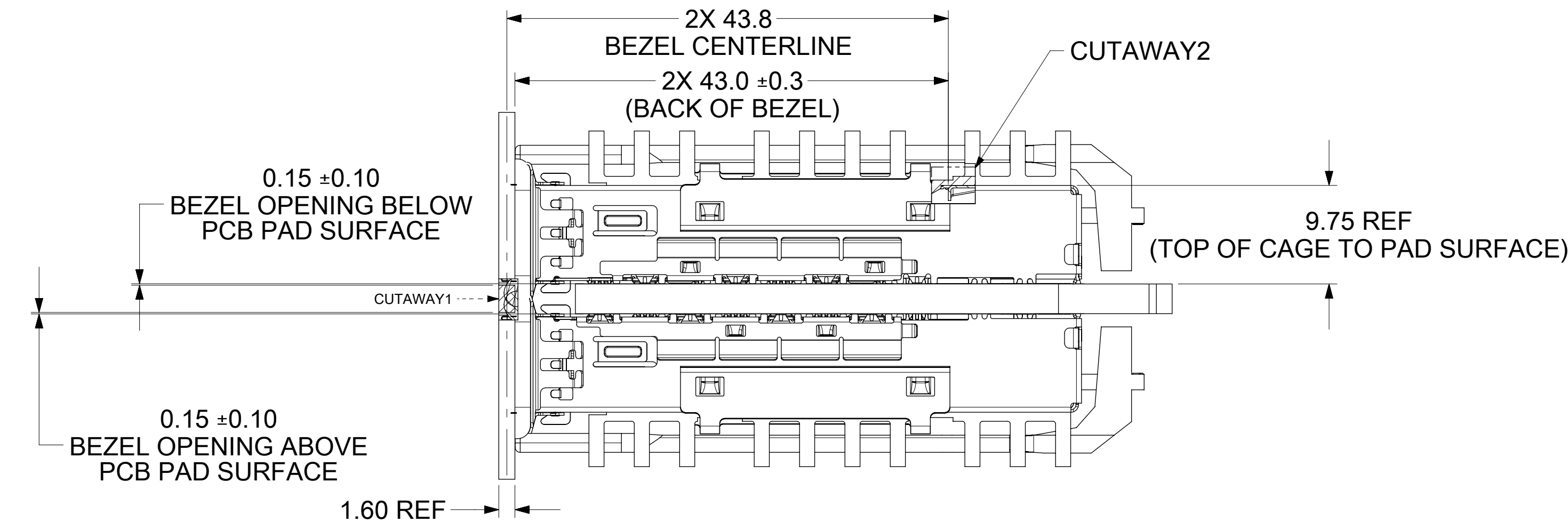
FUNCTIONAL SYMBOLS	THIS DRAWING CONTAINS INFORMATION THAT IS PROPRIETARY TO MOLEX ELECTRONIC TECHNOLOGIES, LLC AND SHOULD NOT BE USED WITHOUT WRITTEN PERMISSION		
FA = 0	mm	SCALE 4:1	CURRENT REV DESC: SEE REVISION TABLE
FC = 0	GENERAL TOLERANCES (UNLESS SPECIFIED)		
FP = 0	ANGULAR TOL ± 1.0°		EC NO: 712623 DRWN: CHETHH2 2022/05/30 CHK'D: TKUMARKC 2022/06/25 APPR: SCHIEN 2022/07/07 INITIAL REVISION: DRWN: CHETHH2 2022/05/30 APPR: SCHIEN 2022/07/07
DIVISIONAL SYMBOLS	4 PLACES	±	
	3 PLACES	±	
	2 PLACES	± 0.13	
	1 PLACE	± 0.25	
	0 PLACES	±	
DRAFT WHERE APPLICABLE MUST REMAIN WITHIN DIMENSIONS		THIRD ANGLE PROJECTION 	DRAWING D-SIZE
	SERIES 100086	MATERIAL NUMBER 1000863747	CUSTOMER
DOCUMENT STATUS P1		RELEASE DATE 2022/07/07 13:29:48	DOCUMENT NUMBER 1000863747
			DOC TYPE PSD
			DOC PART ASY
			REVISION A
			SHEET NUMBER 3 OF 5



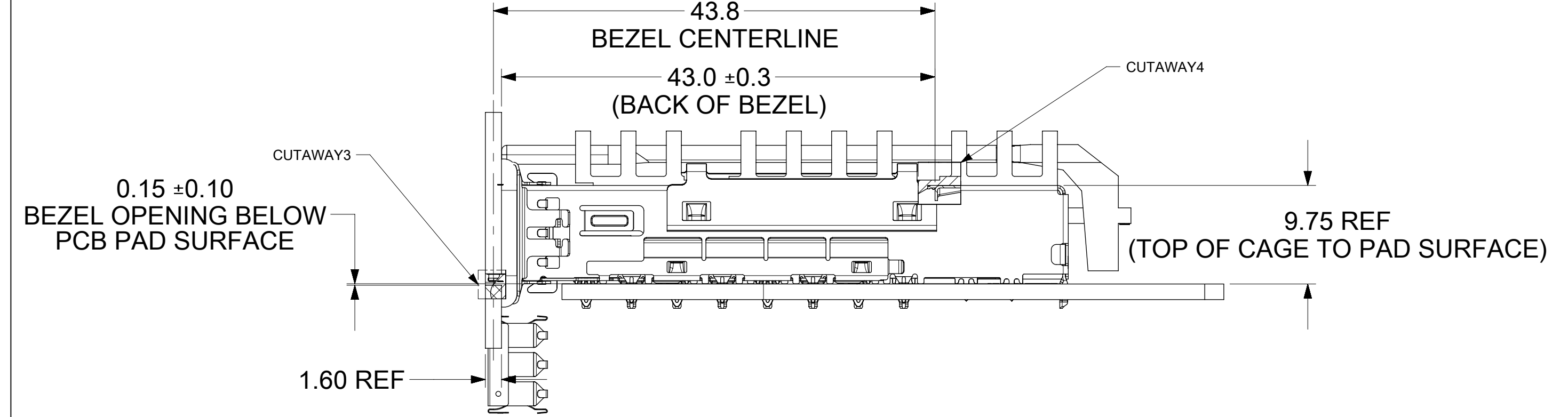
1X16 ZQSFP+ GANGED CAGE, GASKET TYPE
W/ SUS INNER SPRING FINGER, SAN HEATSINK AND
QUAD LIGHT PIPE

PRODUCT CUSTOMER DRAWING

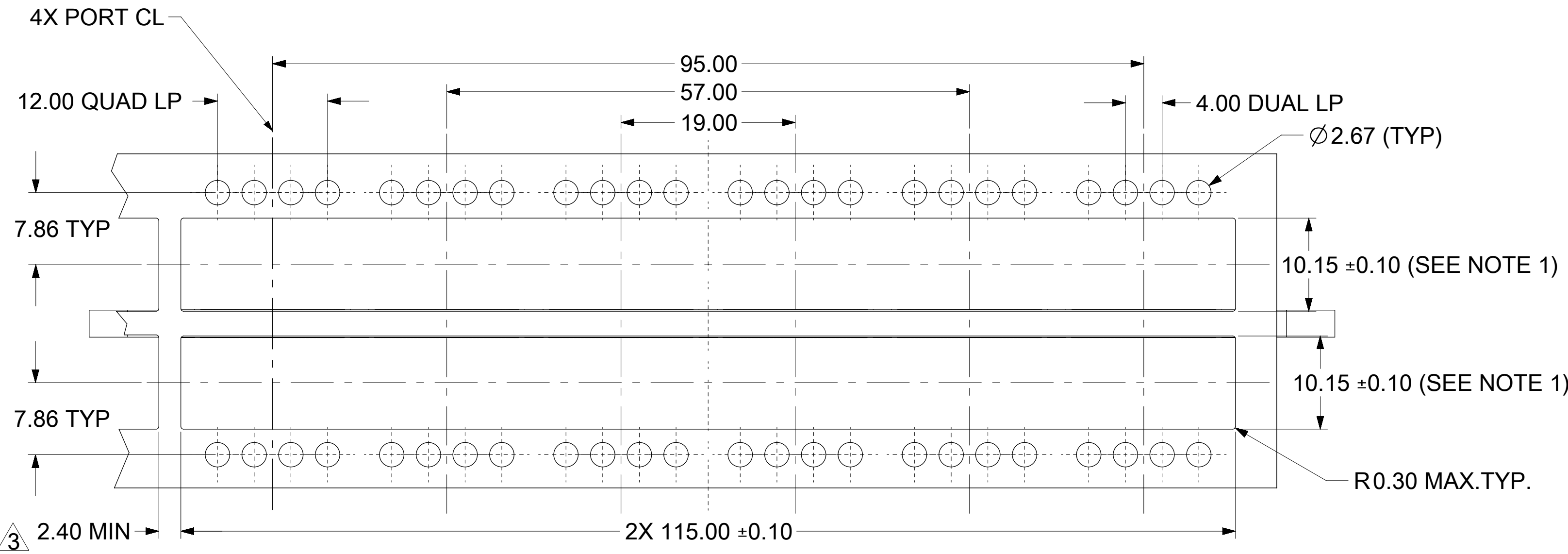
**BEZEL AND BOARD POSITION DIMENSIONS
FOR BELLY TO BELLY MOUNTING**



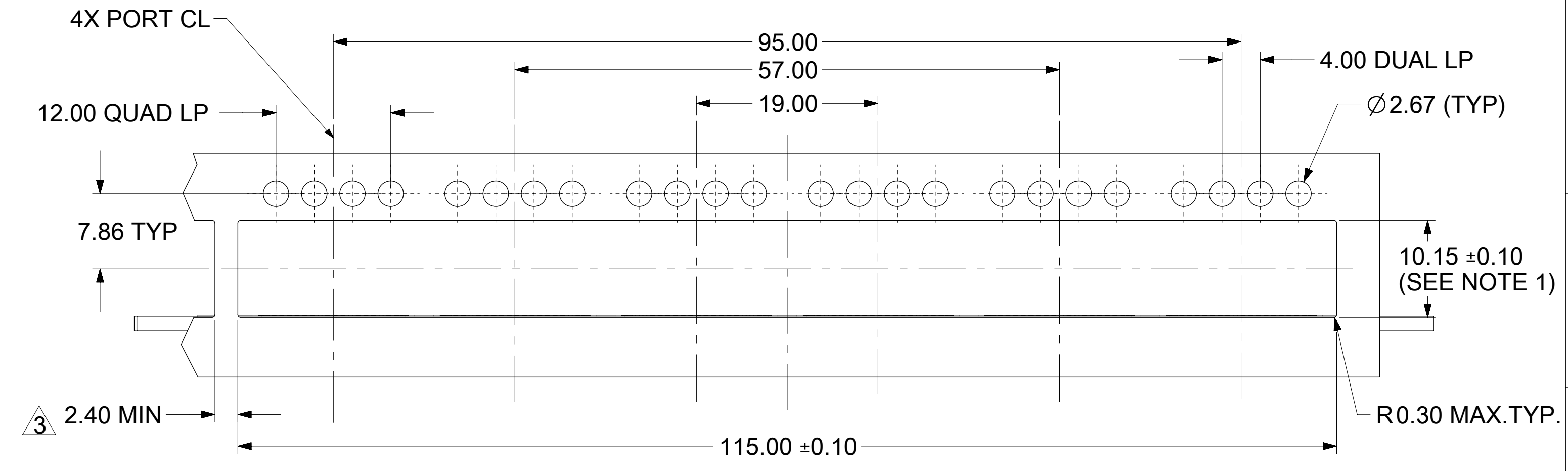
**BEZEL AND BOARD POSITION DIMENSIONS
FOR SINGLE SIDE MOUNTING**



DUAL/QUAD LIGHT PIPE





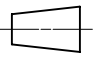
QUAD LIGHT PIPE



NOTE:
 1. PCB THICKNESS VARIATION MUST BE CONSIDERED WHEN DETERMINING BEZEL OPENING, SIZE, AND LOCATION.
 2. NOTED DIMENSIONS ONLY APPLY TO CAGE ASSEMBLIES WITH LIGHT PIPES.
 3. THIS DIM IS FOR REF ONLY USER CAN MODIFY IT DEPENDS ON APPLICATION, HOLE OF THE ADJECENT CAGE ON PCB LAYOUT VAREIES BASED ON MODIFICATION

FUNCTIONAL SYMBOLS FA = 0 FC = 0 FP = 0 DIVISIONAL SYMBOLS	THIS DRAWING CONTAINS INFORMATION THAT IS PROPRIETARY TO MOLEX ELECTRONIC TECHNOLOGIES, LLC AND SHOULD NOT BE USED WITHOUT WRITTEN PERMISSION		CURRENT REV DESC: SEE REVISION TABLE				
	DIMENSION UNITS: mm SCALE: 2.5:1	GENERAL TOLERANCES (UNLESS SPECIFIED) ANGULAR TOL ± 1.0°		EC NO: 712623 DRWN: CHETHH2 2022/05/30 CHK'D: TKUMARKC 2022/06/25 APPR: SCHIEN 2022/07/07		1X6 ZQSFP+ GANGED CAGE, GASKET TYPE W/ SUS INNER SPRING FINGER,SAN HEATSINK AND QUAD LIGHT PIPE PRODUCT CUSTOMER DRAWING	
DRAFT WHERE APPLICABLE MUST REMAIN WITHIN DIMENSIONS		THIRD ANGLE PROJECTION	DRAWING: D-SIZE	SERIES: 100086	MATERIAL NUMBER: 1000863747		CUSTOMER:

REV	DATE	DESCRIPTION
A	2022/06/25	INITIAL RELEASE

FUNCTIONAL SYMBOLS $\nabla_A = 0$ $\nabla_C = 0$ $\nabla_P = 0$ DIVISIONAL SYMBOLS	THIS DRAWING CONTAINS INFORMATION THAT IS PROPRIETARY TO MOLEX ELECTRONIC TECHNOLOGIES, LLC AND SHOULD NOT BE USED WITHOUT WRITTEN PERMISSION															
	DIMENSION UNITS		SCALE		CURRENT REV DESC: SEE REVISION TABLE						 1X6 ZQSFP+ GANGED CAGE, GASKET TYPE W/ SUS INNER SPRING FINGER,SAN HEATSINK AND QUAD LIGHT PIPE					
	mm		1:1		GENERAL TOLERANCES (UNLESS SPECIFIED)											
	ANGULAR TOL \pm 1.0°										EC NO: 712623					
	4 PLACES \pm				DRWN: CHETHH2 2022/05/30											
	3 PLACES \pm				CHK'D: TKUMARKC 2022/06/25											
	2 PLACES \pm 0.13				APPR: SCHIEN 2022/07/07											
	1 PLACE \pm 0.25				INITIAL REVISION: DRWN: CHETHH2 2022/05/30						DOCUMENT NUMBER					
	0 PLACES \pm				APPR: SCHIEN 2022/07/07						1000863747		PSD ASY A		REVISION	
	DRAFT WHERE APPLICABLE MUST REMAIN WITHIN DIMENSIONS				THIRD ANGLE PROJECTION		DRAWING		SERIES		MATERIAL NUMBER		CUSTOMER		SHEET NUMBER	
				 		D-SIZE		100086		1000863747				5 OF 5		