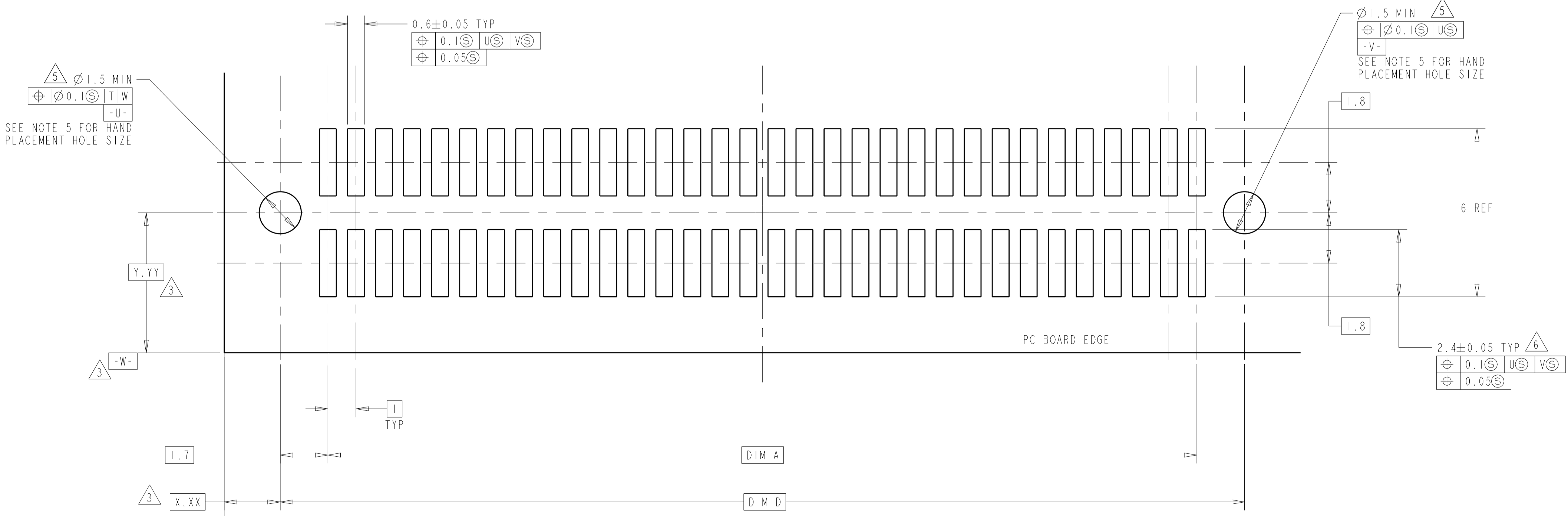
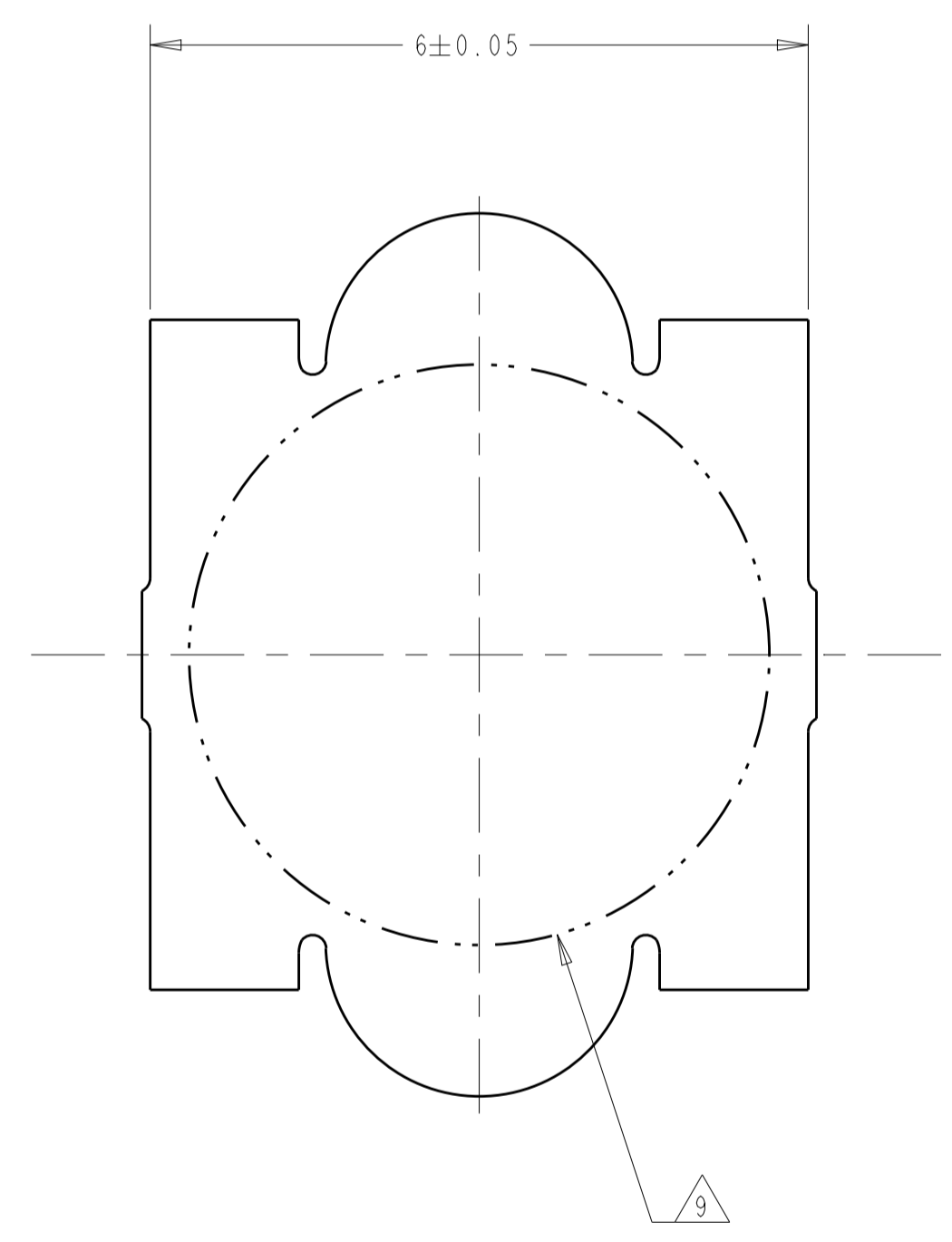
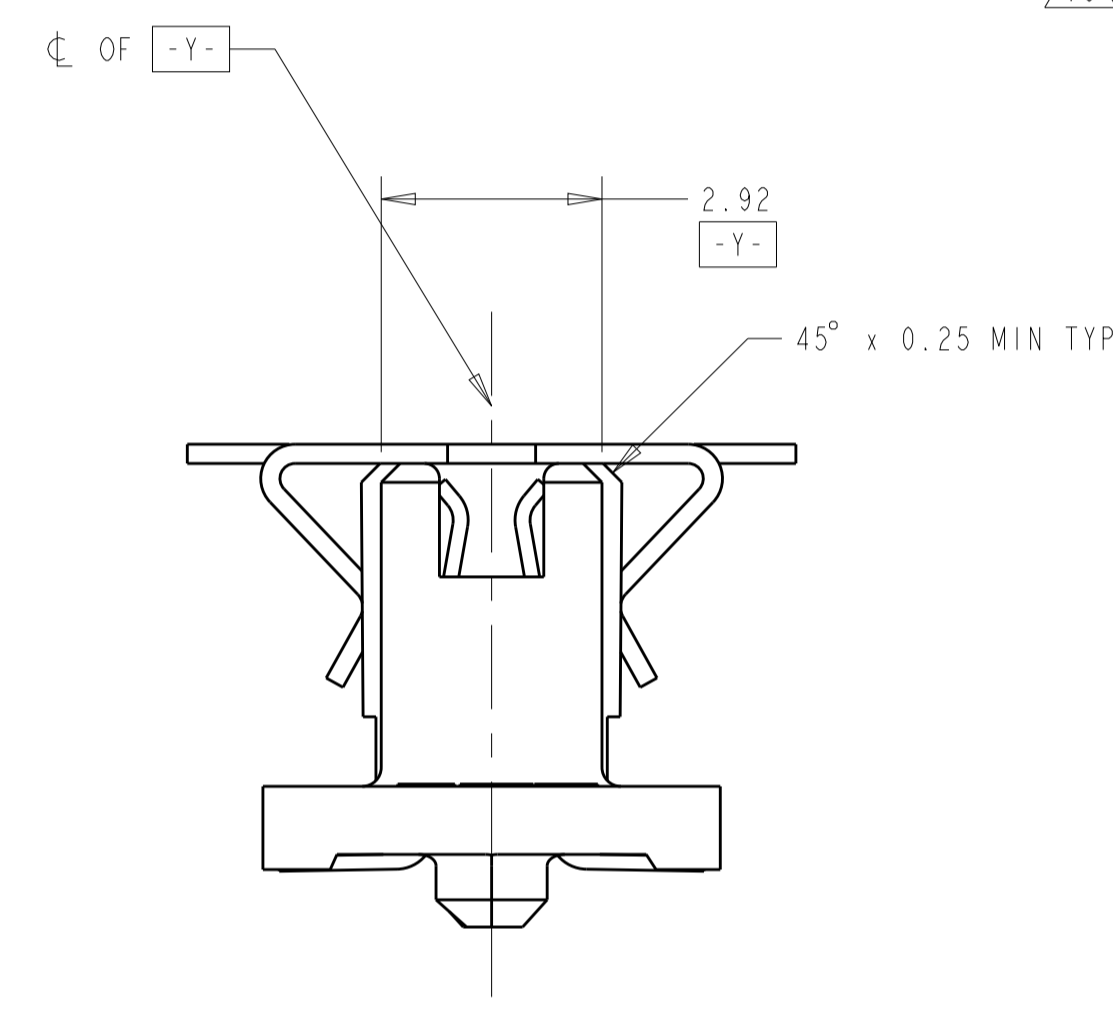
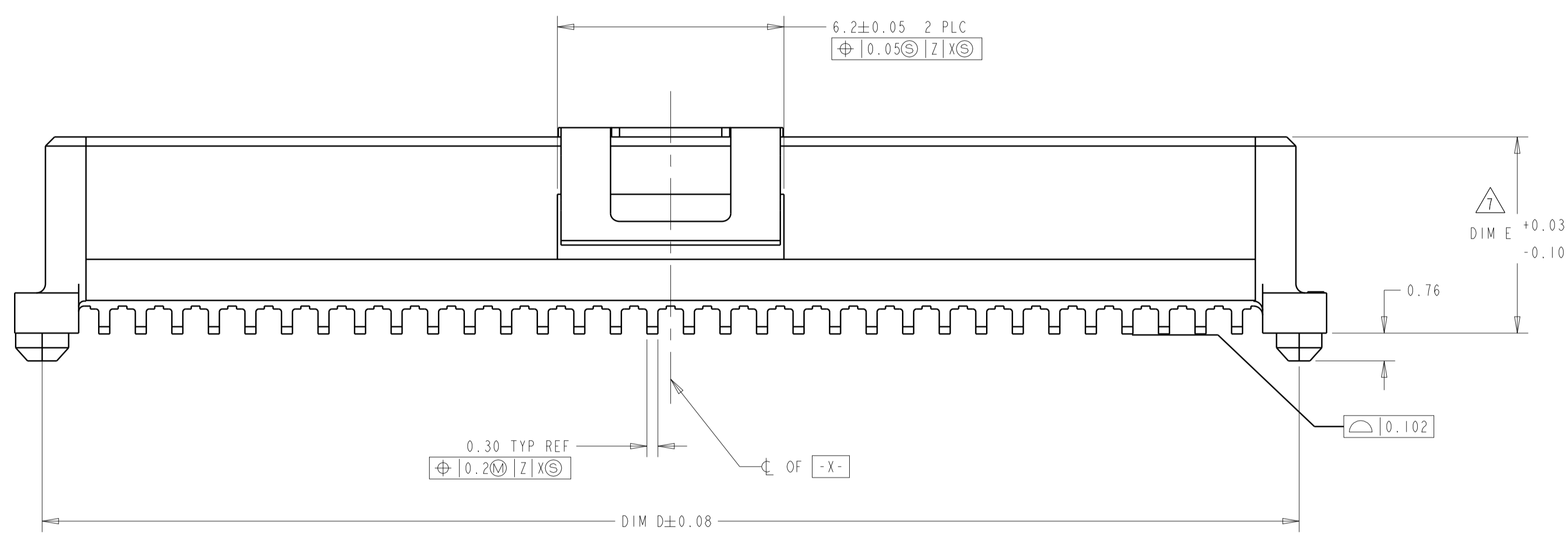
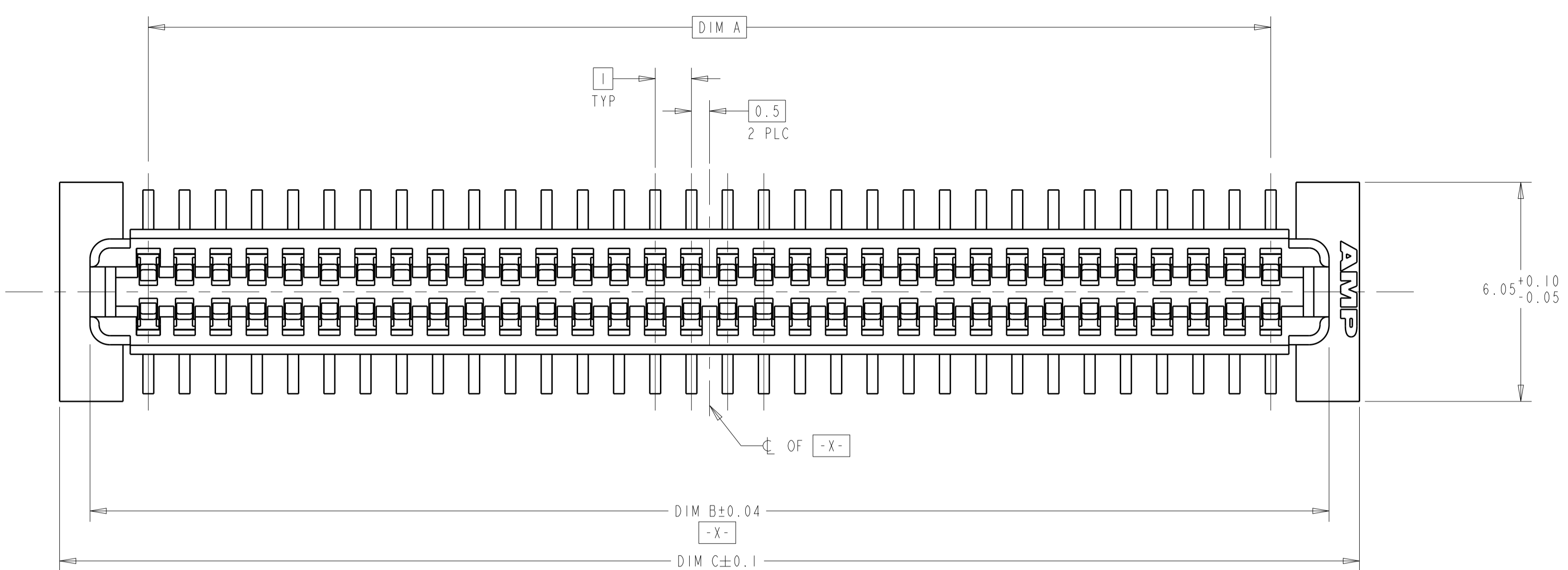


| REVISIONS | | | | |
|-----------|------|-----------------------|-----------|-------------|
| P. | LTN. | DESCRIPTION | DATE | APVD. |
| B | | REV PER ECR-14-016951 | 11FEB2015 | J. T. W. H. |



- 1. HOUSING MATERIAL: POLYPHTHALAMIDE, COLOR: BLACK. CONTACT MATERIAL: PHOSPHOR BRONZE.
- 2. CONTACT FINISH: 0.002 MINIMUM BRIGHT TIN-LEAD (93-7) ON SOLDER AREA. 0.00127 MINIMUM GOLD ON MATING AREA. BOTH OVER 0.00127 MINIMUM NICKEL ON ENTIRE CONTACT.
- 3. DATUM LOCATIONS AND BASIC DIMENSIONS TO BE ESTABLISHED BY THE CUSTOMER. CONSULT AMP ENGINEERING WHEN PLACING MULTIPLE CONNECTORS ON A PC BOARD.
- 4. PACKAGED IN TAPE ON REEL PER EIA-481.
- 5. 1.4 ± 0.05 DIAMETER HOLE WHEN PLACING BY HAND.
- 6. SHORTER SOLDER LANDS MAY BE USED PER EIA 700AAAB, HOWEVER 2.4 LENGTH ASSURES OPTIMUM SOLDER FILLET REGARDLESS OF MANUFACTURER OF CONNECTOR.
- 7. REFERRED TO AS DIM H IN EIA 700AAAB SPECIFICATION.
- 8. VACUUM COVER NOT SHOWN IN SOME VIEWS FOR CLARITY.
- 9. 5.5 MIN DIAMETER TARGET AREA FOR VACUUM PICK-UP.
- 10. SEE CATALOG FOR OTHER MATING CONNECTOR OPTIONS.

| FINISH | DIM E | DIM D | DIM C | DIM B | DIM A | MATING CONNECTORS | STACK HEIGHTS | POS | TE PART NUMBER |
|--------|-------|-------|-------|-------|-------|-------------------|---------------|-----|----------------|
| 2 | 10.37 | 34.4 | 35.9 | 34.22 | 31 | 1-146888-1 | 15 | 64 | 2007042-4 |
| 2 | 10.37 | 34.4 | 35.9 | 34.22 | 31 | 1-146898-1 | 14 | 64 | 2007042-4 |
| 2 | 8.37 | 34.4 | 35.9 | 34.22 | 31 | 1-146888-1 | 13 | 64 | 2007042-3 |
| 2 | 7.37 | 34.4 | 35.9 | 34.22 | 31 | 1-146888-1 | 12 | 64 | 2007042-2 |
| 2 | 7.37 | 34.4 | 35.9 | 34.22 | 31 | 1-146898-1 | 11 | 64 | 2007042-2 |
| 2 | 5.37 | 34.4 | 35.9 | 34.22 | 31 | 1-146888-1 | 10 | 64 | 2007042-1 |
| 2 | 5.37 | 34.4 | 35.9 | 34.22 | 31 | 1-146898-1 | 9 | 64 | 2007042-1 |
| 2 | 5.37 | 34.4 | 35.9 | 34.22 | 31 | 1-146897-1 | 8 | 64 | 2007042-1 |

THIS DRAWING IS A CONTROLLED DOCUMENT.

DIMENSIONS: mm
 TOLERANCES UNLESS OTHERWISE SPECIFIED:
 0 PLC ±
 1 PLC ±0.03
 2 PLC ±0.03
 3 PLC ±0.03
 4 PLC ±
 ANGLES ±0°1'

MATERIAL: SEE TABLE
 FINISH: SEE TABLE

DWG: B. CARBO 04APR2007
 CHK: D. BRATINA 04APR2007
 APVD: D. BRATINA 04APR2007

NAME: RECEPTACLE ASSY, W/ VACUUM COVER, 1.0mm FH (IEEE 1386) CONNECTOR
 PRODUCT SPEC: 502-1079
 APPLICATION SPEC: 114-25045
 WEIGHT: -
 CUSTOMER DRAWING

STE TE Connectivity
 SIZE: A1
 CAGE CODE: 00779
 DRAWING NO: 2007042
 SCALE: 10:1
 SHEET: 1 OF 1
 REV: B