

# **ORIENT DISPLAY** Your Total LCD Solution Provider

## Specification for LED Backlight

### JAZZ-AE-S

Revision A



JAZZ	LED Backlight
AE	Serial AE, Dimension 71.20 X 48.50 X 5.20 mm
S	Red-Green-Blue (RGB)
/	RoHS Compliant
/	Pair with <a href="#">Glass Panel JAZZ-AC</a>
/	Pair with <a href="#">Touch Panel JAZZ-AT</a>







## 4. 极限参数 ABSOLUTE MAXIMUM RATINGS (SINGLE LED)

(除非特别说明, 环境温度Ta=25°C. Unless specified, The Ambient temperature Ta=25°C)

项目 Item	符号 Symbol	条件 Conditions	值 Rating	单位 Unit
* 极限直流正向电流 Absolute maximum forward current	Ifm		25	mA
* 脉冲驱动时极限正向电流 Peak forward current	Ifp	1 msec 脉冲, 1/10 占空比 1 msec Plus 10% Duty Cycle	60	mA
反向电压 Reverse Voltage	Vr		5	V
* 极限功耗 Power dissipation	Pd		50	mW
工作温度 Operating Temperature Range	Topr		-30~+70°C	°C
贮存温度 Storage Temperature Range	Tstg		-40~+80°C	°C

\* 当工作温度高于 25°C 时, Ifm, Ifp 和 Pd 必须降低; 电流降低率是 -0.36 mA/°c (直流驱动), 或 -0.86 mA/°c (脉冲驱动), 功率降低率是 -0.75 mW/°C. 产品工作电流不能大于对应的工作条件温度 Ifm 或 Ifp 的 60 %.

For operation above 25°C, The Ifm Ifp & Pd must be derated, the Current derating is -0.36 mA/°c for DC drive and -0.86 mA/°c for Pulse drive, the Power dissipation is -0.75 mW/°c. The product working current must not more than the 60 % of the Ifm or Ifp according to the working temperature.

## 5. 电光特性 ELECTRICAL-OPTICAL CHARACTERISTICS

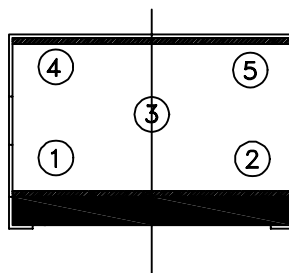
(除非特别说明, 环境温度Ta=25°C. Unless specified, The Ambient temperature Ta=25°C)

项目 Item	符号 Symbol	典型值 typ.(red)	典型值 typ.(green)	典型值 typ.(blue)	单位 Unit	测定条件 Condition
正向电压 Forward Voltage	Vf	1.9-2.1	2.8-3.2	2.7-3.1	V	If(R)=10X5=50 mA If(G,B)= 15X5=75 mA
反向电流 Reverse Current	Ir	10			μA	Vr= 5 V
峰值波长 Peak wave length	λp	620-625	520-525	465-470	nm	If(R)=10X5=50 mA If(G,B)= 15X5=75 mA
频谱半宽度 Spectral Line Half width	Δλ	35	20	20	nm	If(R)=10X5=50 mA If(G,B)= 15X5=75 mA
* 亮度 Luminance	Lv	100-120	300-350	70-80	cd/m²	If(R)=10X5=50 mA If(G,B)= 15X5=75 mA

\* 亮度值是5个测量点的平均值, 亮度最大值比最小值一般小于等于1.3. 使用 ST-86LA 亮度计测量, 测量光圈 φ 5 mm.

The luminance is the average value of 5 points, and, The Lvmax./Lvmin. is 1.3 max.

The measurement instrument is ST-86LA luminance Colorimeter. The caperture is φ 5 mm.



DESIGN:	设计 ZCK
CHECKED:	检查
COUNTERSIGN:	会签
APPROVED:	批准