

DESCRIPTION	11-21-90	REV
C. Weathers		3

**SAFETY ORGANIZATION(S).**

THIS FILTER HAS BEEN FORMALLY RECOGNIZED, CERTIFIED OR APPROVED BY THE LISTED AGENCY. THEREFORE, ALL TEST/REQUIREMENTS SPECIFIED IN THE LATEST REVISION OF THE FOLLOWING AGENCY STANDARDS HAVE BEEN MET.

UL RECOGNIZED  
CSA CERTIFIED

UL 1283  
CSA 22.2 NO. 0, 0.4, 8

**OPERATING SPECIFICATIONS.**

LINE VOLTAGE/CURRENT:  
45 OR 60 AMP., 250VAC PHASE/NEUTRAL-GND  
45 OR 60 AMP., 440VAC PHASE/PHASE  
50-60HZ

LINE FREQUENCY:  
1.4mA @ 120V 60HZ  
3.4mA @ 250V 50HZ

MAX. CASE RISE @ RATED CURRENT: 40°C  
MAX. LEAKAGE CURRENT, EACH LINE TO GROUND  
-10°C TO +40°C @ RATED CURRENT, I<sub>r</sub>

IN AN AMBIENT, T<sub>a</sub>, HIGHER THAN 40°C, THE MAXIMUM OPERATING CURRENT, I<sub>o</sub>, IS AS FOLLOWS:  
 $I_o = I_r \sqrt{\frac{85 - T_a}{45}}$

**RELIABILITY SPECIFICATIONS.**

STORAGE TEMPERATURE:  
-25°C TO +85°C

HUMIDITY:  
21 DAYS @ 40°C 95% RH

**TEST SPECIFICATIONS.**

INDUCTANCE:  
45A = 2.22mH NOMINAL  
60A = 1.48mH NOMINAL

GROUND CHOKES:  
45A = .261mH NOMINAL  
60A = .242mH NOMINAL

CAPACITANCE: (MEASURED @ 1 KHZ, 0.25 VAC MAX., 25°C ±1°C)  
.026µF ±20%  
4.47µF ±20%

PHASE TO NEUTRAL:  
DISCHARGE RESISTOR:  
73.3K OHMS

LINE/GROUND AND LINE/LINE INSULATION RESISTANCE (W/O DISCHARGE RESISTOR)  
6000 MΩ (MIN) AT 100 VDC  
20°C AND 50% RH

RECOMMENDED RECEIVING INSPECTION HIPOTEST.  
PHASE/NEUTRAL TO GROUND: 1500 VAC FOR 1 MINUTE  
PHASE TO NEUTRAL: 1450 VDC FOR 1 MINUTE

**FILTER APPROVAL:**

THE BEST WAY TO SELECT AND QUALIFY A FILTER IS FOR YOUR ENGINEERING TO TEST THE UNIT IN YOUR EQUIPMENT.

TOLERANCE EXCEPT AS NOTED  
DECIMAL: .XXX .XX .X ANGLES ±1°  
ENGLISH: ±.030  
METRIC: ±

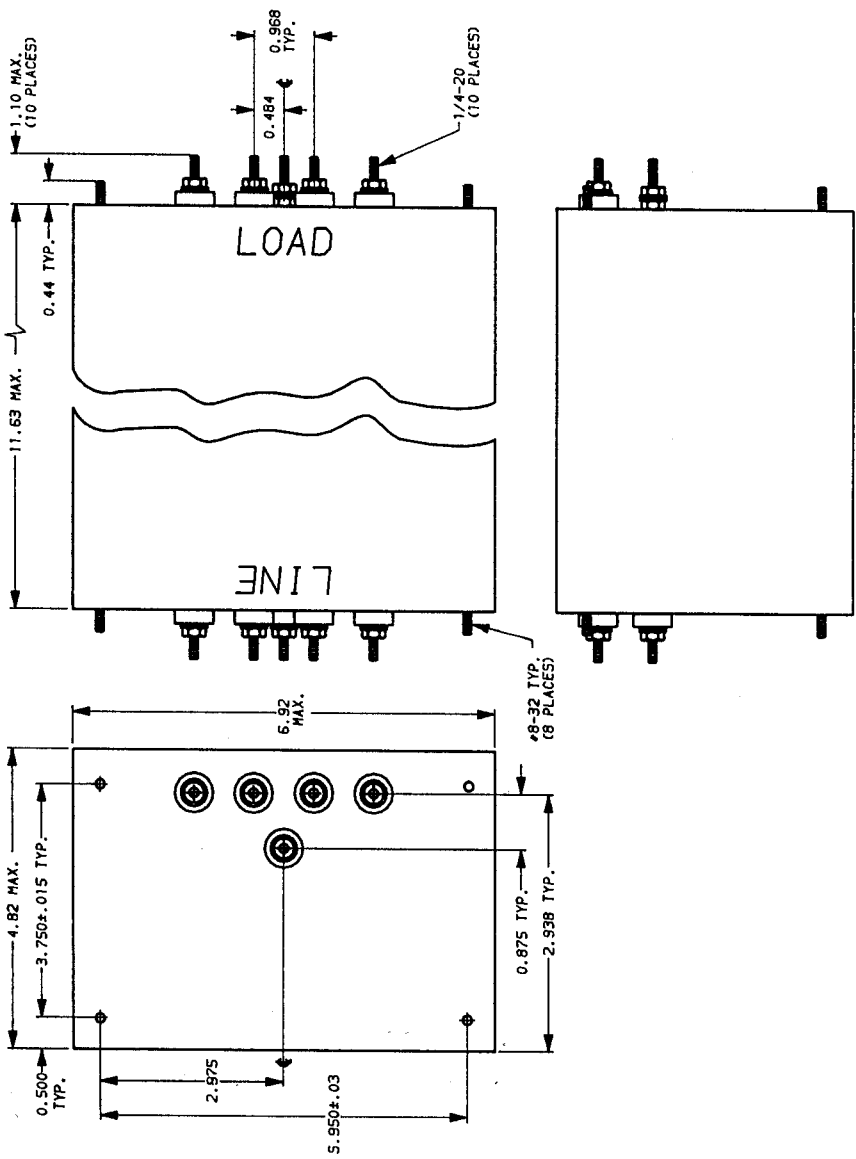
MATERIAL: AS SUPPLIED

FINISH:



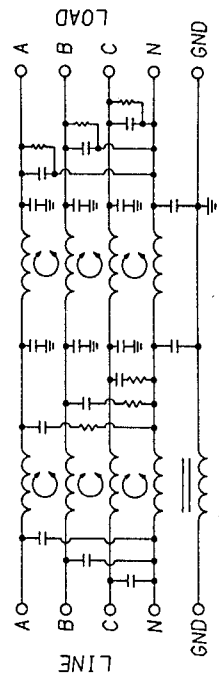
POWER LINE FILTER

SCALE	DRG. NO.	REV.
NTS	4-25-89	3
DESIGNATOR	45AY16C & 60AY16C	
LJD	CFW	



**NOTES:**

1.) LINE SIDE HAS INSULATED GROUND TERMINAL.



NOTE: COMMON MODE A-B-C & N SHORTED TOGETHER. DIFF. MODE MEASURED N TO A-B-C SHORTED TOGETHER.

50Ω - 50Ω (MINIMUM) INSERTION LOSS							
FREQUENCY MHz	.05	.15	.5	1.0	5.0	10.0	30.0
COMMON 45A	15	43	75	75	75	75	50
60A	12	46	75	75	75	70	45
DIFF. 45A	14	50	75	75	75	75	65
60A	26	58	75	75	75	75	60

This document is proprietary to CORCOM INC. and is not to be reproduced nor used for manufacturing purposes except on CORCOM's order or prior written consent.