

SES(B), 320 KA, 480 V UN, 3PHΔ 3W+G DISTRIBUTION SYSTEM

CATALOG NUMBER

SES320B480D



The nVent ERICO SES320 B Series of Surge Protective Devices (SPD) provides economical protection against damaging transients and surge currents. The B Series is a cUL 1449 listed SPD for Type 1 and Type 2 locations allowing for installation either on the line or load of service panels without requiring circuit breakers. With a 320 kA per phase surge rating, the SES320 B is well suited for category C locations. Typical applications for the nVent ERICO SES320 B Series include service entrances, distribution, branch panels, MCC, lighting panels, HVAC, and more. Featuring a NEMA 4X enclosure rating, the B series is also appropriate for use in outdoor applications.

CERTIFICATIONS



FEATURES

- 320 kA 8/20 μ s maximum surge rating per phase
- Excellent clamping and low UL voltage protection ratings
- Features relay alarming for power/phase loss and status of SPD health
- Compact design can be directly mounted to panel or installed in a small space
- Ground reference monitoring triggers an alarm when N-PE mode exceeds 20 volts
- Optional Flush Mounting Plate
- 10-year limited warranty

PRODUCT ATTRIBUTES

- Nominal System Voltage (Un): 480 V
- Max Continuous Operating Voltage (Uc): 550 V
- Distribution System: 3PhΔ 3W+G
- Frequency: 0 – 600 Hz
- Short Circuit Current Rating (SCCR): 200 kA

Voltage Protection Rating (VPR), L-L: 1800 V

Nominal Discharge Current (In), Per Mode: 20 kA 8/20 -s

Max Discharge Current (Imax), Per Phase: 320 kA 8/20 -s

Protection Modes: All modes protected

Status Indication: 1 green LED per line; Dual color status LED, flashing red for faults; Audible alarm

Remote Contact Switching Capacity: 2 A @ 240 V A

Remote Contacts: Yes

Lead Length: 36"

Temperature: -40 to 185 °F

Enclosure Material: Polycarbonate

Enclosure Rating: NEMA®-4X; UL® 50E Type 4

Mounting: 3/4- straight nipple

Unit Weight: 1.38 lb

Certification Details: CSA C22.2 No. 269.1;UL® 1449 Edition 5 Type 1/2, 20 kA Mode

Complies With: ANSI®/IEEE® C62.41.2-2002 Cat A, Cat B, Cat C; ANSI®/IEEE® C62.41.1-2002 Cat A, Cat B, Cat C;
ANSI®/IEEE® C62.45-2002 Cat A, Cat B, Cat C

Depth (D): 2.99"

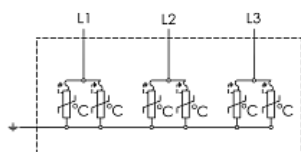
Height (H): 6.89"

Width (W): 8.38"

ADDITIONAL PRODUCT DETAILS

Optional Flush Plate available: SES320FP

DIAGRAMS



WARNING

nVent products shall be installed and used only as indicated in nVent's product instruction sheets and training materials. Instruction sheets are available at www.nvent.com and from your nVent customer service representative. Improper installation, misuse, misapplication or other failure to completely follow nVent's instructions and warnings may cause product malfunction, property damage, serious bodily injury and death and/or void your warranty.

North America

+1.800.753.9221

Option 1 – Customer Care

Option 2 – Technical Support

Europe

Netherlands:

+31 800-0200135

France:

+33 800 901 793

Europe

Germany:

800 1890272

Other Countries:

+31 13 5835404

APAC

Shanghai:

+ 86 21 2412 1618/19

Sydney:

+61 2 9751 8500



Our powerful portfolio of brands:
nVent.com CADDY ERICO HOFFMAN RAYCHEM SCHROFF
TRACER