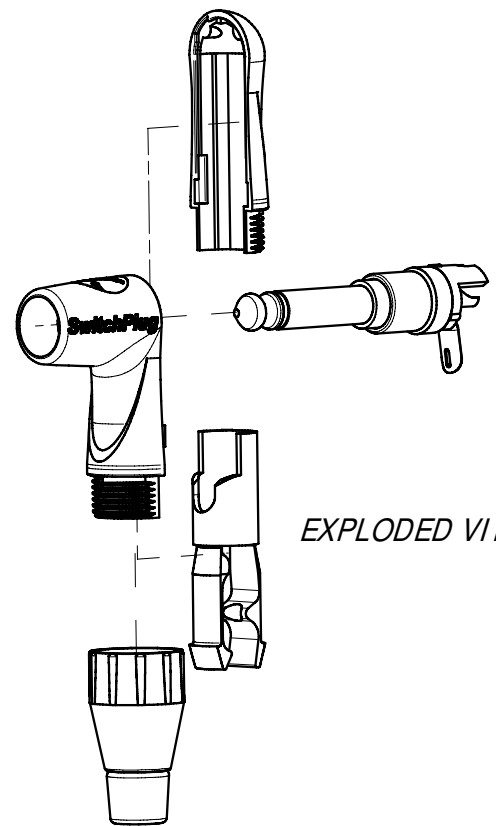
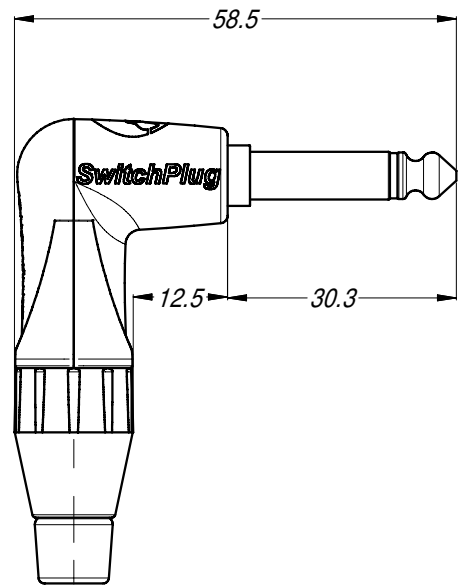
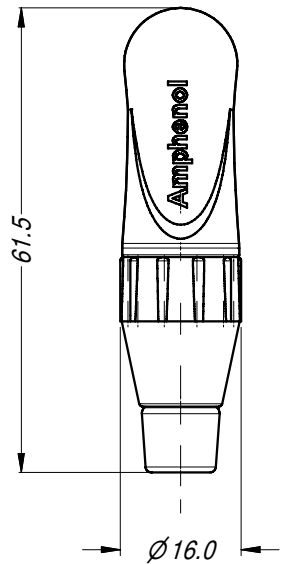


LEGEND  = KEY PRODUCT CHARACTERISTICS

REVISION HISTORY				
REV	DESCRIPTION	BY	DATE	ECN
0	FIRST ISSUE	T.N	26/11/10	8968



EXPLODED VIEW

PART NUMBER BREAKDOWN

TM1R B J - AU BULK

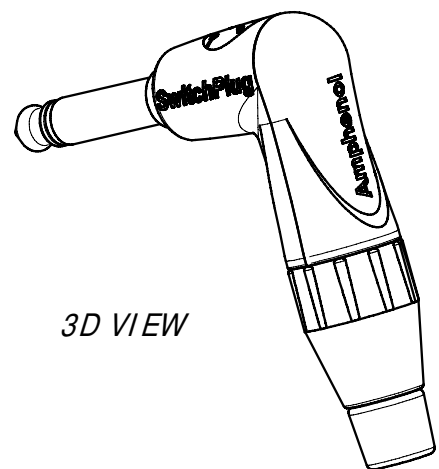
SERIES DESIGNATION
 TM1R B J - AU BULK

SHELL FINISH
 BLANK: NICKEL
 B: BLACK

CABLE CLAMP
 BLANK: STANDARD
 J: LARGE

CONTACT FINISH
 BLANK: NICKEL
 AU: GOLD

PACKING:
 BLANK: SINGLE
 BULK: BULK PACK



3D VIEW

NOTES:

- STANDARD JAW CABLE CLAMP (BLACK) USED FOR CABLE OD 3.0 mm TO 5.5mm
 LARGE JAW CABLE CLAMP (PURPLE) USED FOR CABLE OD 5.5mm TO 6.5mm

UNLESS OTHERWISE SPECIFIED TOLERANCE TO BE		THIS DOCUMENT IS THE PROPERTY OF AMPHENOL AUSTRALIA PTY. LTD. NO PART THEREOF MAY BE REPRODUCED AND USED WITHOUT THE PRIOR WRITTEN CONSENT OF THE OWNER		Amphenol Amphenol Australia Pty.Ltd, 2 Fiveways Blvd, Keysborough, VIC 3173	
LINER X ± 0.5 X.X ± 0.1 X.XX ± 0.05	ANGULAR X' ± 1 X.X' ± 30' X.XX' ± 15'	MATERIAL: SEE COMPONENTS	DRN: T.N CKD: P.M APP'D: P.M	DATE: 13/10/10 DATE: 13/10/10 DATE: 13/10/10	TITLE: SWITCH PLUG RIGHT ANGLE PRO RANGE
DO NOT SCALE		FINISH: SEE PART No.	SCALE: 1:1	SIZE: A4	PART No. SEE P/ No. BREAKDOWN
DIMENSIONS IN MILLIMETRES		THIRD ANGLE PROJECTION	CAD FILE: 55010717000110	DRAWING No. 55010717-000-2 SHEET 2/2	