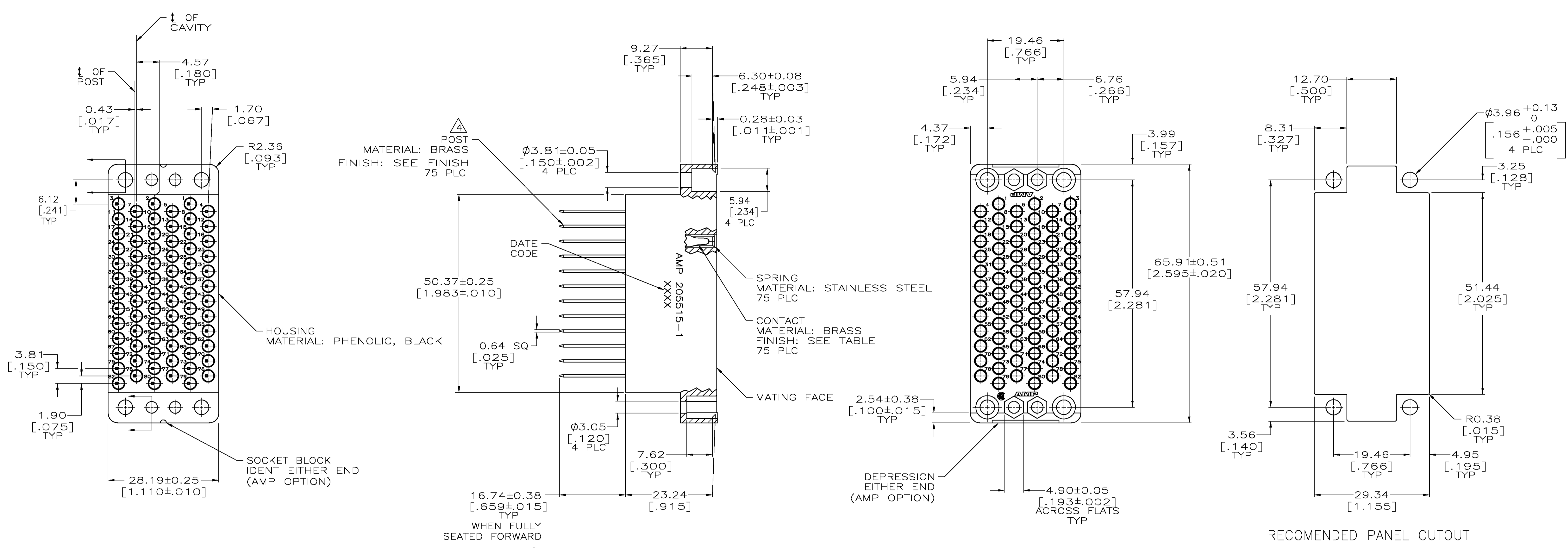


LOC		DIST		REVISIONS			
P	LTR	DESCRIPTION	DATE	OWN	APVD		
W		REVISED PER 063B-0095-05	4/4/05	SS	GS		



- ⚠ EACH POST WILL EXCEPT (SEE TABLE) TERMINATIONS OF #24 AWG MAX WIRE.
- ⚠ 0.76um [.000030] MIN GOLD ON MATING END FOR A LENGTH OF 5.08 [.200] MIN, GOLD FLASH ON THE REMAINDER OVER 0.76um [.000030] MIN NICKEL.
- ⚠ 2.54um [.000100] MIN TIN-LEAD OVER 1.27um [.000050] MIN NICKEL.
- ⚠ POSTS ARE SEMI-AUTOMATICALLY WIRABLE.
- ⚠ 2.54um [.000100] MIN TIN OVER 1.27um [.000050] MIN NICKEL.

RECOMENDED PANEL CUTOUT

⚠	⚠	3	9-205515-6
⚠	⚠	3	205515-1
POST PLATING	CONTACT FINISH	NO OF TERM	PART NUMBER
		1	

THIS DRAWING IS A CONTROLLED DOCUMENT.

DIMENSIONS: mm [INCHES]	TOLERANCES UNLESS OTHERWISE SPECIFIED:	DWG B. CARBO 14 OCT 97	APVD R. STONE 31 OCT 97	NAME Tyco Electronics Corporation Harrisburg, Pa 17105-3608
0 PLC ± -	1 PLC ± -	PRODUCT SPEC	SOCKET ASSY, 75 POSITION, AUTO-WIRABLE, STD, M SERIES	
2 PLC ± 0.13 [.005]	3 PLC ± -	APPLICATION SPEC	SIZE A1	CAGE CODE 00779
4 PLC ± -	ANGLES ± -	FINISH SEE CALLOUTS	DRAWING NO C=205515	RESTRICTED TO
MATERIAL SEE CALLOUTS	FINISH SEE CALLOUTS	WEIGHT	SCALE 2:1	SHEET 1 of 1
CUSTOMER DRAWING		REV W		