



AUDIO
TECHNOLOGIES®

XLR CHASSIS CONNECTORS

5 PIN E SERIES - HORIZONTAL PCB MOUNT

Locking horizontal PCB mount 5 pin chassis connector with plastic body for audio and lighting control.

Other Available Mounting Option: Vertical PCB Mount



IO-XLR5-M-EH



IO-XLR5-F-EH

SPECIFICATIONS

PRODUCT

Gender: **Male (IO-XLR5-M-EH)**

Female (IO-XLR5-F-EH)

Contacts: **5**

ELECTRICAL

Capacitance Between Contacts: **≤ 2 pF**

Capacitance Between Contact and Ground: **≤ 2 pF**

Contact Resistance: **< 6 mΩ**

Insulation Resistance: **≥ 5000 MΩ**

Dielectric Strength: **1500V @ 60s**

Current Rating: **3A / 50V AC**

Grounding: **Separate ground terminal. Grounds to shell of mating connector and panel**

ENVIRONMENTAL

Standard Compliance: **IEC 61076-2-103**

UL Flammability: **UL94V-0**

Temperature Range: **-40°C ~ +70° C (-40°F ~ +158°F)**

MECHANICAL

Lifetime: **> 1000 Mating Cycles**

Wiring: **Horizontal PCB Mount**

Locking Device: **Latch Lock**

Mounting Direction: **Rear**

Solderability: **Complies with IEC 60068-2-20**

MATERIAL

Contacts: **Gold Plated Brass**

Ground Terminal: **Nickel Plated Brass**

Shell: **Polyamide**

Shell Finish: **Black**

Push Button: **Nickel Plated Brass**

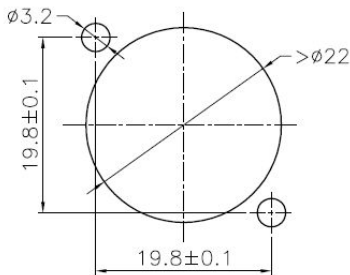
Latch: **Nickel Plated Carbon Steel**

Product specifications may change without prior notification

Io Audio Technologies® is a registered trademark of Knight Electronics, Inc.
10557 Metric Dr. Dallas, TX 75243 | 214-340-0265 | 800-323-2439 | Fax: 214-340-5870 |
www.ioaudiotechnologies.com



Panel Cutout



FEATURES & APPLICATIONS

E Series XLR chassis connectors offer the most cost-effective solution for design-in applications where the termination method is to a printed circuit board. The small footprint makes this our XLR receptacle with the highest packing density available. These connectors feature a compact all plastic housing with precision machined, one piece, gold plated contacts to help prolong the useful life of the connectors. They also come with a separate nickel plated ground pin that grounds the connector to the panel. The compact form factor of these connectors makes them perfect for situations where space saving is a priority or space for a connector is limited.

Available in 3, 4, or 5 pin, Male or Female variations with options for vertical or horizontal PCB mounting.

PART NUMBER BREAKDOWN:

IO-**XLR**5-M-EH
Series Identifier
IO-**XLR**5-M-EH
Number of Pins
IO-**XLR**5-**M**-EH
Gender
IO-**XLR**5-M-**E**H
Series Identifier
IO-**XLR**5-M-**E**H
H = Horizontal PCB Mount
V = Vertical PCB Mount

STANDARDS & CLASSIFICATIONS



Product specifications may change without prior notification