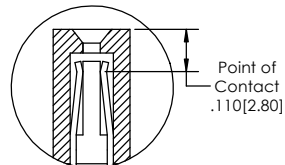
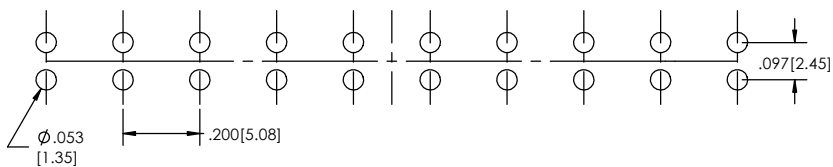
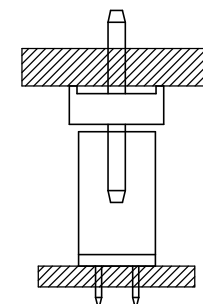


Recommended P.C. Board Layout
SCALE 4:1



APPLICATION



PC200S - **XX** - **S** - **02** - **T** - **X** - **LF**
(A) (B) (C) (D) (E) (F)

- A. Pins Per Row
- 02 through 20
- B. Row Specification
- S= Single Row
- C. Thru Hole
- 02
- D. Plating Options
- See Plating Options below
- E. Packing Information
- T= Tube
- B= Bulk
- If left blank, packaging at MLE's discretion
- F. Lead Free

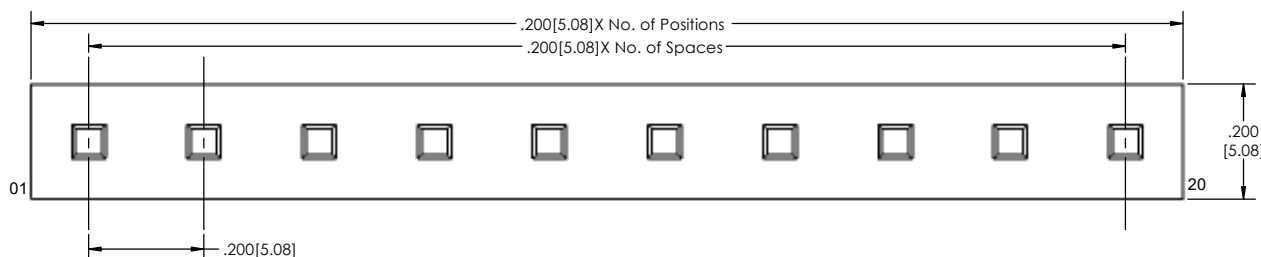
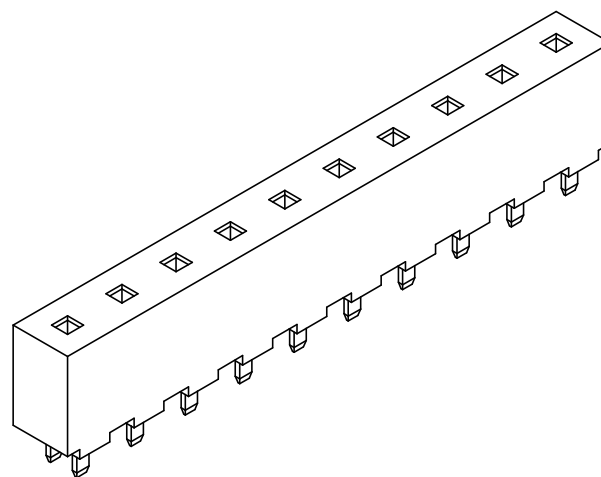
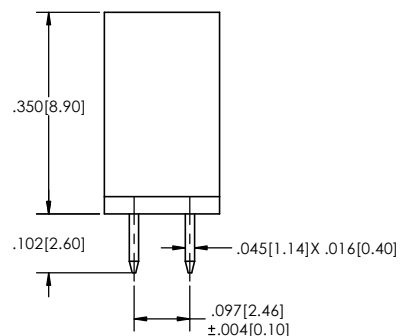
Mates with:
PC200H
PC200HR

Plating options
 Matte Tin all Over

Specifications:
Current Rating: 7.9 Ampere
Insulation Resistance: 1000M Ohms Min.
Dielectric Withstanding: 1500V AC
Contact Resistance: 20M Ohms Max.
Operation Temperature: -55°C to $+105^{\circ}\text{C}$
Max. Process Temperature
IR Reflow: 280°C up to 10 secs.
Wave: 250°C up to 10 secs.
Manual Solder: 380°C up to 5 secs.
No. of Mating Cycles: 100
Insertion Force (Average): 7N/ Pin Max.
Withdrawal Force (Average): 0.5N/Pin Min.

Materials:
Contact Material: Brass
Insulator Material: LCP, UL94V-0
Plating: Au or Sn over $50\mu^*$ (1.27) Ni
Tails may be clipped to achieve specific dimensions.

Products cut to specific sizes are uncancellable/ nonreturnable.
Parts are subject to change without notice.



PROPRIETARY AND CONFIDENTIAL
THE INFORMATION CONTAINED IN THIS DRAWING IS THE SOLE PROPERTY OF Major League Electronics. ANY REPRODUCTION IN PART OR AS A WHOLE WITHOUT THE WRITTEN PERMISSION OF Major League Electronics IS PROHIBITED.

UNLESS OTHERWISE SPECIFIED:		NAME	DATE
DRAWN	EOW		10/11/16
CHECKED	GWE		10/11/16
ENG APPR.			
MFG APPR.			
INTERPRET GEOMETRIC TOLERANCING PER:		ADDRESS:	
MATERIAL:		2533 Centennial Blvd. Jeffersonville, IN 47130	
NEXT ASSY USED ON:		Phone: 812-670-4174	
APPLICATION		Fax: 812-670-4175	
DO NOT SCALE DRAWING		E-Mail: mle@mlelectronics.com	
TITLE: PC200S-02 SERIES			
SIZE DWG. NO.		REV	
C		C	
SCALE 6:1		SHEET 1 OF 1	

