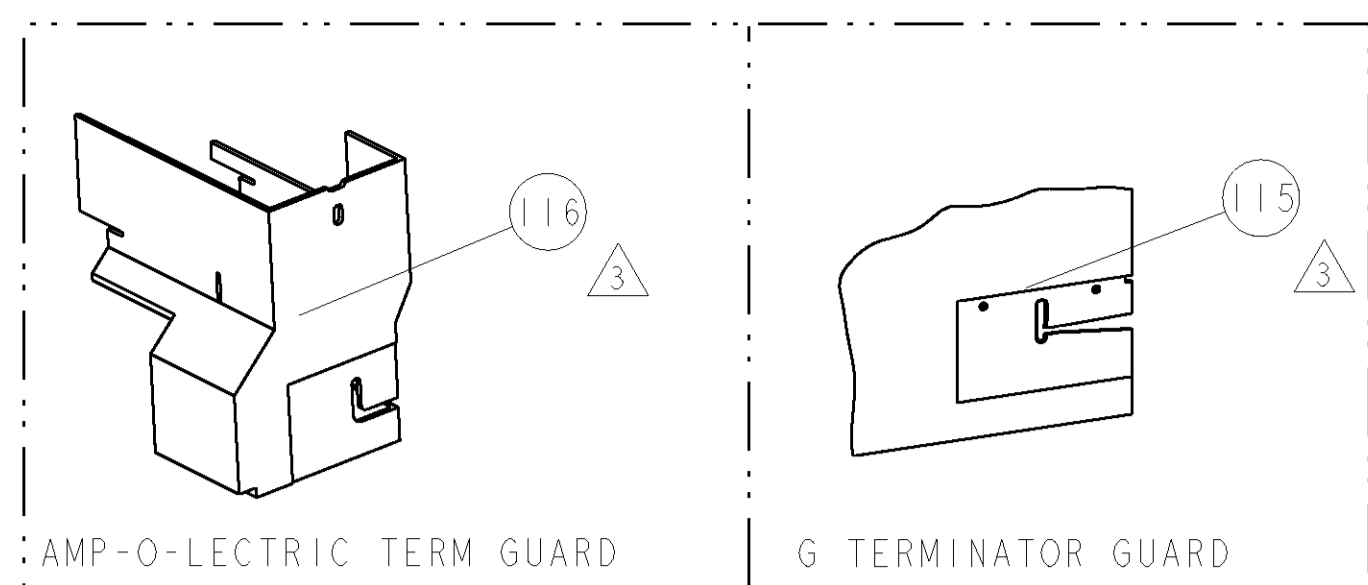


PART NUMBER	REV	FIRST USED	POWER UNIT	FEED TYPE	DESCRIPTION
1855277-1	B	122500-1	LEADMAKER	POST FEED	CUTS CARRIER
1855277-2	B	565435-5	BENCH MODEL K	PRE FEED	CUTS CARRIER
1855277-3	B	354500-1	BENCH MODEL G	PRE FEED	CUTS CARRIER
1855277-6	B	122500-1	LEADMAKER	POST FEED	CONTINUOUS CARRIER
7-1855277-7	A	-	-	-	SPARE PARTS

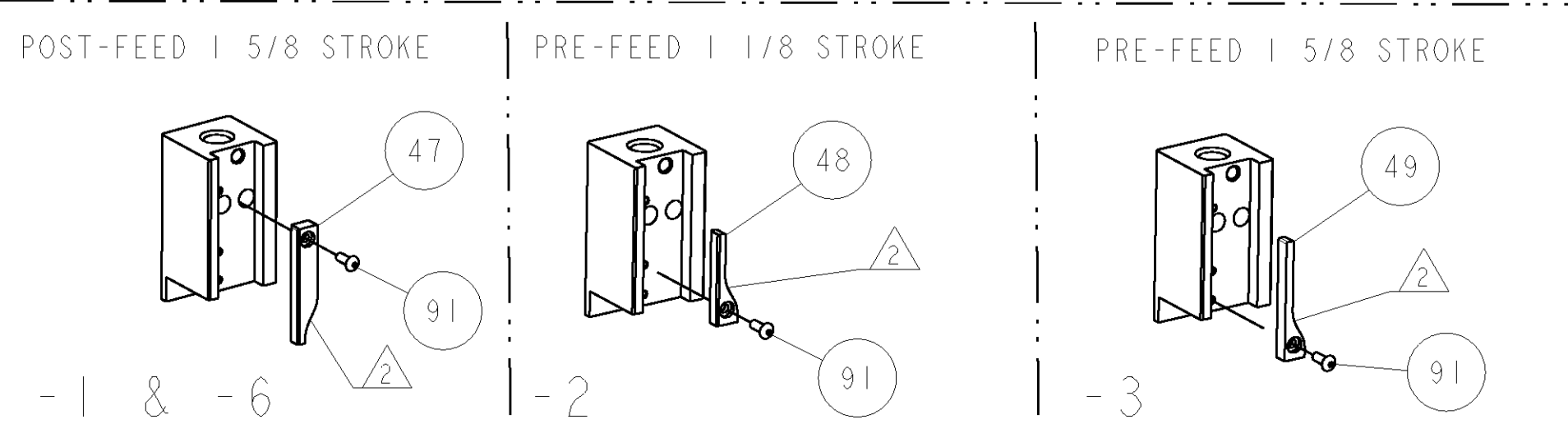
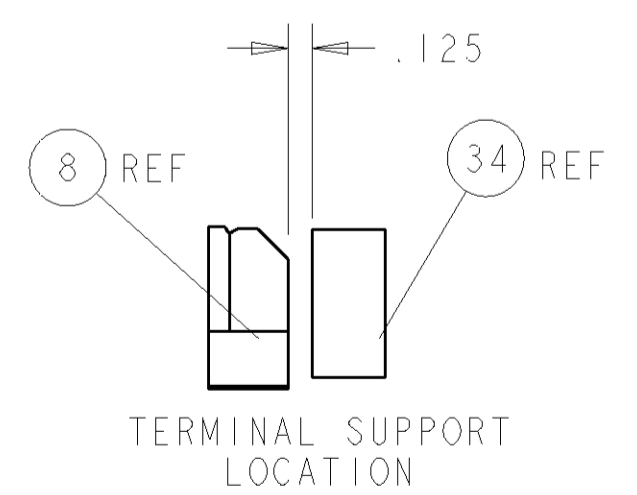
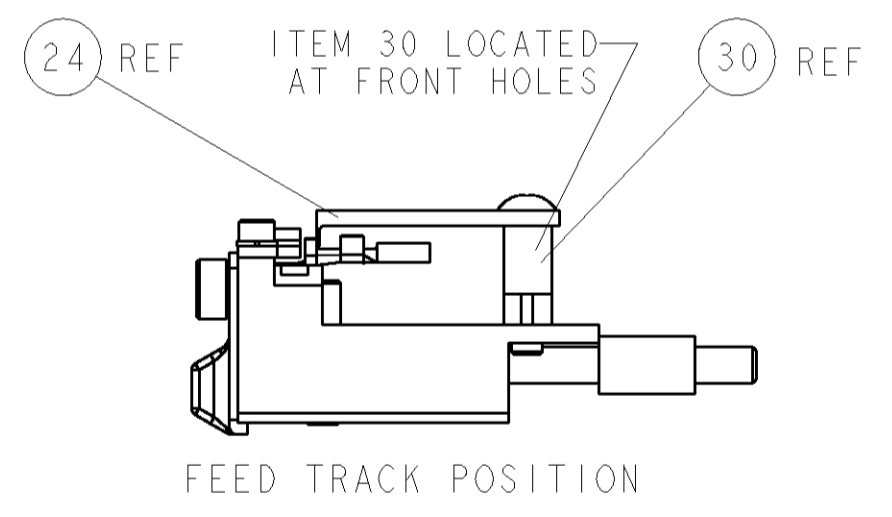
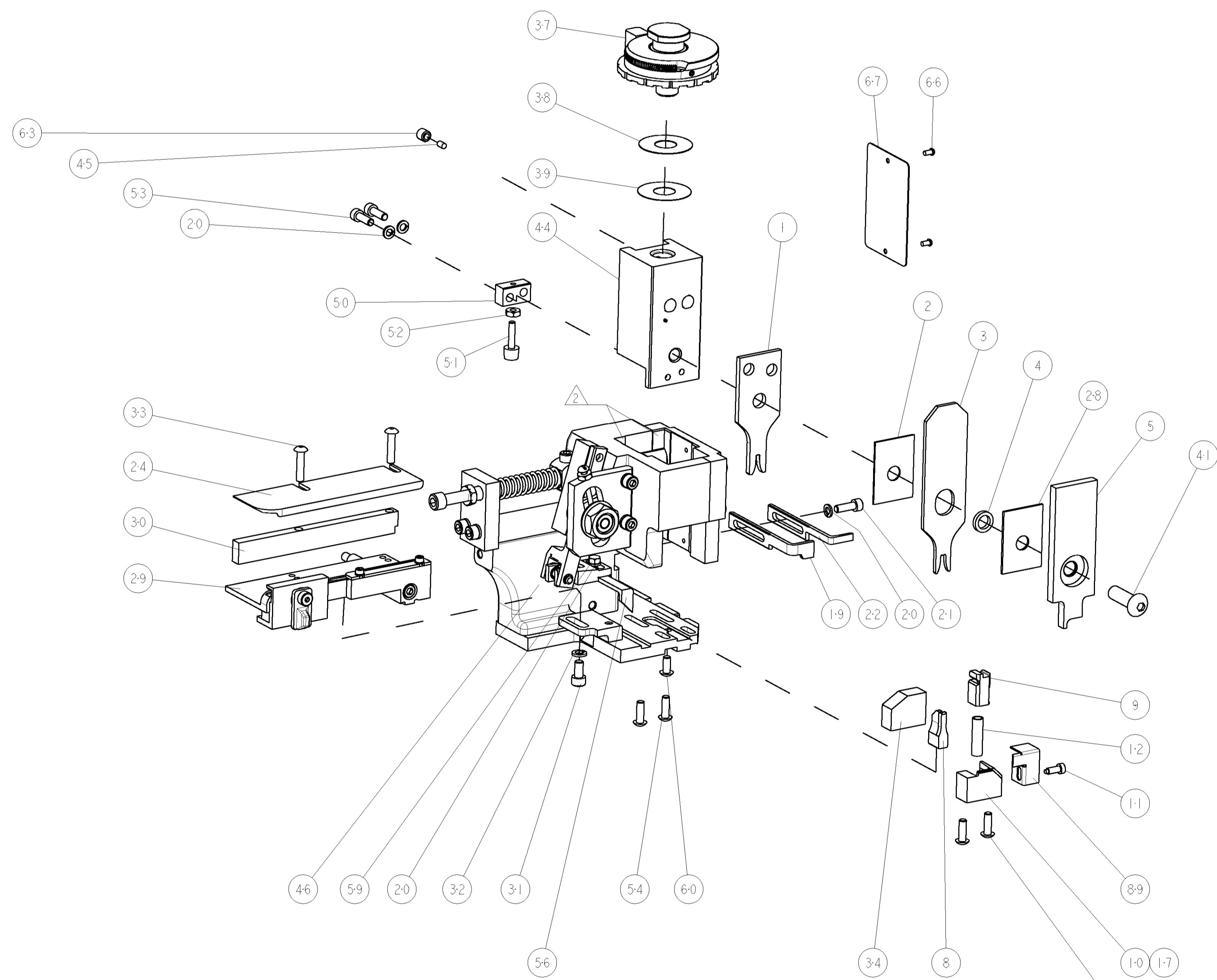


TERMINAL NAME: CONTACT, RECEPTACLE, .070 TYPE			
184030	-	AMP TERMINAL - AMP CRIMP SPECS	
184289	-		
		CRIMP HEIGHT	WIRE SIZE
-	-	1.70±0.05mm [.067±.002]	14AWG
-	-	1.45±0.05mm [.057±.002]	16AWG
-	-	1.24±0.05mm [.049±.002]	18AWG
-	-	1.17±0.05mm [.046±.002]	20AWG
		CRIMP	SIZE
-	-	WIRE	2.29mm [.090]
-	-	INSUL	3.56mm [.140]
		FEED	APPLICATOR INSTRUCTIONS
-	-	9.80mm	408-8040
		SET UP GAGE	458637-1

LOC	DIST	REVISIONS			
F	LTR	DESCRIPTION	DATE	DRN	APPR
A	66	PRODUCT RELEASE	14MAY2007	CMR	GB
A1		ECR-08-008923	10APR2008	MY	TE
B		ECR-09-004546	26FEB2009	MY	GB

- △ RECOMMENDED SPARE PARTS
- △ GREASE LIGHTLY
- △ GUARD MUST BE IN PLACE WHEN OPERATING APPLICATOR IN A BENCH MACHINE
- △ APPLICATOR APPLIES A SCROLL INSULATION CRIMP IN PLACE OF A SEAL. DISREGARD SECTION COVERING SEALS.

*** WARNING**
ON INSTALLATION, SET WIRE DISC TO LARGEST WIRE SIZE SETTING. USE OF SETTINGS BELOW MIN. REQUIRED CRIMP HEIGHT SETTING WILL CAUSE DAMAGE TO CRIMP TOOLING.



△	-	-	-	REF	-	..	455749-1	GUARD WINDOW	116
△	-	-	-	REF	-	..	679532-1	INSERT, GUARD	115
-	1	1	1	1	1	-	1-21002-7	SCR, BTN SKT HD CAP 6-32 X .375	91
-	1	1	1	1	1	-	318563-1	GUARD, FRONT CHIP	89
-	1	1	1	1	1	-	4088040	SF APPL INST 408-8040	72
-	1	1	1	1	1	-	217238-1	GENERAL INSTRUCTION PKG	71
-	1	1	1	1	1	-	461264-5	PLATE, IDENTIFICATION	67
-	2	2	2	2	2	-	21017-2	SCREW, DRIVE	66
-	1	1	1	1	1	-	21009-2	SCR, SET, SELF LOCKING 1/4-20 X .250	63
-	1	1	1	1	1	-	22733-8	SCR, BHSC, SELF-LOCKING, 8-32 X .375	60
-	1	1	1	1	1	-	2-22603-0	SCR, HEX HD CAP 8-32 X .312	59
-	1	1	1	1	1	-	458537-2	PAWL, FEED	56
-	4	4	4	4	4	-	2-21002-2	SCR, BTN SKT HD CAP 8-32 X .500	54
-	2	2	2	2	2	-	2-21000-7	SCR, SKT HD CAP 8-32 X .500	53
-	1	1	1	1	1	-	21018-5	NUT, HEX, REG 6-32	52
-	1	1	1	1	1	-	811242-2	BUMPER, HOLD DOWN	51
-	1	1	1	1	1	-	690753-1	SPACER, TONKER	50
-	-	-	-	-	-	..	690602-6	CAM, PRE FEED, 1 5/8	49
-	-	-	-	-	-	..	690602-5	CAM, PRE FEED, 1 1/8	48
-	1	-	-	1	-	-	690501-4	CAM, POST-FEED 1 5/8	47
-	1	1	1	1	1	-	459456-1	APPL. BASIC SUB ASSY (SIDE WISE MOCA)	46
-	1	1	1	1	1	-	690191-1	PLUG, NYLON	45
-	1	1	1	1	1	-	455673-1	RAM, SIDE FEED	44
-	1	1	1	1	1	-	7-21002-9	SCR, BTN SKT HD CAP 5/16-24 X 1.00	41
-	1	1	1	1	1	-	690125-1	SHIM SUB-ASSY	39
-	1	1	1	1	1	-	1-469367-0	SHIM	38
-	1	1	1	1	1	-	879103-3	FINE ADJUST HEAD ASSEMBLY	37
-	1	1	1	1	1	-	690786-1	TERMINAL SUPPORT	34
-	2	2	2	2	2	-	2-21002-4	SCR, BTN SKT HD CAP 8-32 X .750	33
-	1	1	1	1	1	-	21024-5	WASHER, SPRG LOCK, REG NO 10	32
-	1	1	1	1	1	-	3-21000-4	SCR, SKT HD CAP 10-32 X .375	31
-	1	1	1	1	1	-	1320908-8	SPACER, STRIP GUIDE	30
-	1	1	1	1	1	-	1633091-1	ASSEMBLY, STRIP GUIDE	29
-	1	1	1	1	1	-	1-455888-0	SPACER, CRIMPER	28
-	1	1	1	1	1	-	1320928-1	PLATE, STRIP GUIDE	24
-	1	-	-	1	-	-	690472-2	STRIPPER	22
-	1	1	1	1	1	-	2-21000-7	SCR, SKT HD CAP 8-32 X .500	21
-	4	4	4	4	4	-	21024-4	WASHER, SPRG LOCK, REG NO 8	20
-	-	1	1	1	-	-	691353-1	STRIPPER	19
△	-	-	-	-	-	-	679625-1	SHEAR HOLDER, FRONT (NO CUT)	17
-	1	1	1	1	1	-	3-22280-3	SPRING, COMPRESSION	12
-	1	1	1	1	1	-	690461-1	STOP, SHEAR	11
△	-	-	1	1	1	-	690459-1	SHEAR HOLDER, FRONT	10
△	-	1	1	1	1	-	1-454276-9	FLOATING SHEAR, FRONT	9
△	1	1	1	1	1	-	1-189717-8	ANVIL, COMBINATION	8
-	1	1	1	1	1	-	2-455889-0	DEPRESSOR, SHEAR	5
-	1	1	1	1	1	-	1-238011-0	BLOCK, CRIMPER SPACER	4
△	1	1	1	1	1	-	1424367-2	CRIMPER, INSULATION, SCROLL	3
△	1	1	1	1	1	-	455888-7	SPACER, CRIMPER	2
△	1	1	1	1	1	-	3-456406-3	CRIMPER, WIRE PREMIUM	1

DIMENSIONS:		TOLERANCES UNLESS OTHERWISE SPECIFIED:	
INCHES	0 PLC ±.01	1 PLC ±.01	2 PLC ±.01
	3 PLC ±.001	4 PLC ±.001	ANGLES ±.0001

DRN	M. CLIFFORD	01MAY2007	NAME	M. CLIFFORD
APPR	M. CLIFFORD	01MAY2007	PRODUCT SPEC	
APPL			APPLICATION SPEC	
MATERIAL		FINISH	WEIGHT	
CUSTOMER DRAWING		SCALE	3:5	SHEET 1 OF 1

tyco Tyco Electronics
 Harrisburg, PA 17105-3608
 FINE ADJUST SIDE FEED
 HDM APPLICATOR
 SIZE: 00779 C=1855277
 RESTRICTED TO
 CUSTOMER VIEWABLE ASSEMBLY