

4

3

2

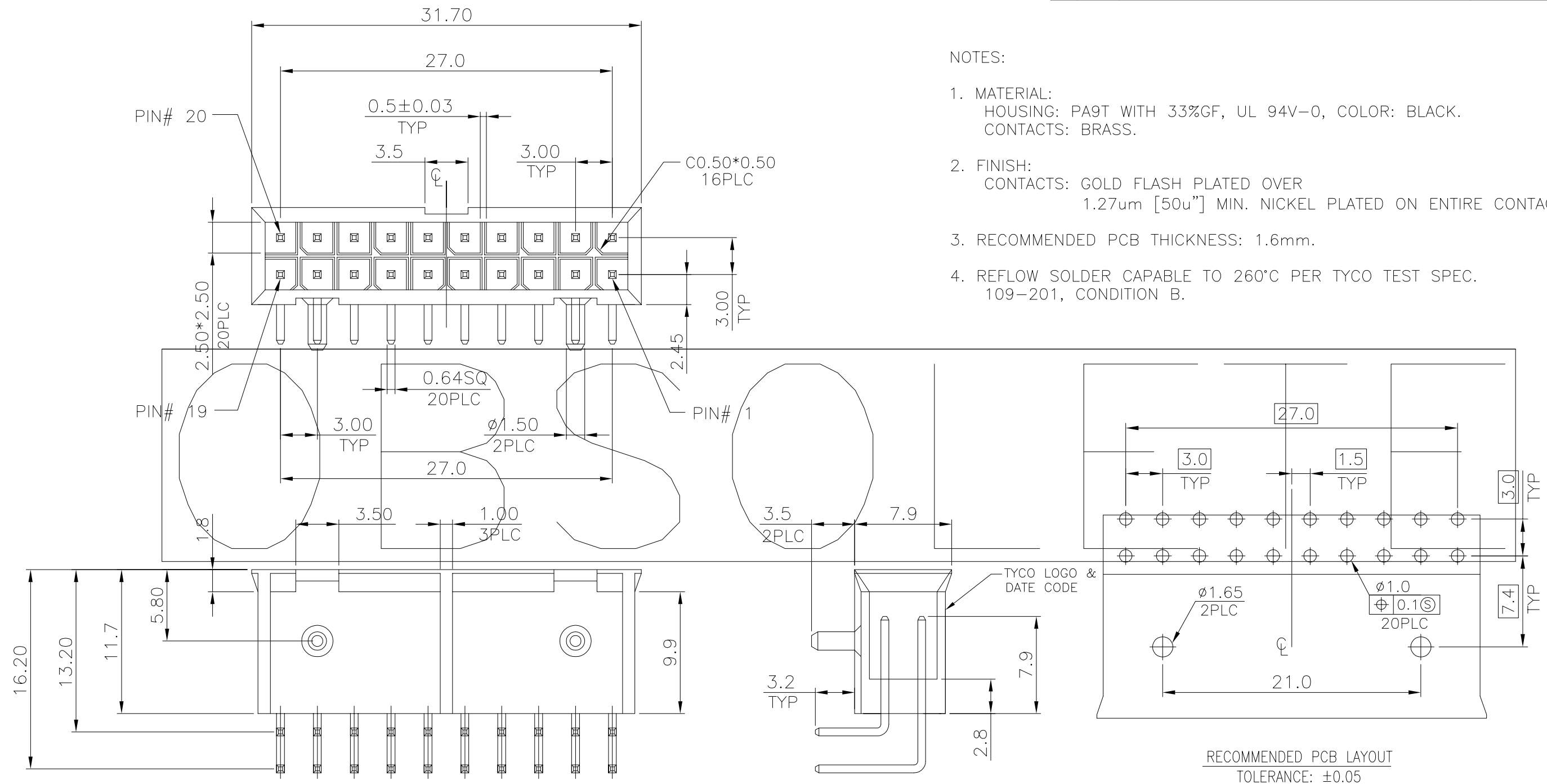
1

THIS DRAWING IS UNPUBLISHED. RELEASED FOR PUBLICATION  
 © COPYRIGHT BY TYCO ELECTRONICS CORPORATION. ALL RIGHTS RESERVED.

LOC	DIST	REVISIONS				
P	LTR	DESCRIPTION	DATE	DWN	APVD	
DW	-	B	PER ECR-15-011649	10SEP15	DS	FY

NOTES:

- MATERIAL:  
HOUSING: PA9T WITH 33%GF, UL 94V-0, COLOR: BLACK.  
CONTACTS: BRASS.
- FINISH:  
CONTACTS: GOLD FLASH PLATED OVER  
1.27um [50u"] MIN. NICKEL PLATED ON ENTIRE CONTACT.
- RECOMMENDED PCB THICKNESS: 1.6mm.
- REFLOW SOLDER CAPABLE TO 260°C PER TYCO TEST SPEC. 109-201, CONDITION B.



1775372-1  
 PART NUMBER

THIS DRAWING IS A CONTROLLED DOCUMENT.		DWN	J. LEE	03JAN2007		<b>3.0mm BTX POWER, 20 POS, PLUG, R/A, DIP CONNECTOR</b>
DIMENSIONS: MM		CHK	S. HOU	03JAN2007		
		APVD	W.J. KE	03JAN2007		
TOLERANCES UNLESS OTHERWISE SPECIFIED: 0 PLC ± - 1 PLC ± 0.30 2 PLC ± 0.20 3 PLC ± - 4 PLC ± - ANGLES ± 3°		PRODUCT SPEC	108-57641			
MATERIAL SEE NOTE		FINISH SEE NOTE		QUALIFICATION TEST REPORT	501-57747	
		WEIGHT	2.80GRAMS		SIZE	A3
		CUSTOMER DRAWING			CAGE CODE	00779
					DRAWING NO	1775372
					RESTRICTED TO	-
					SCALE	-
					SHEET	1 of 2
					REV	B

4

3

2

1

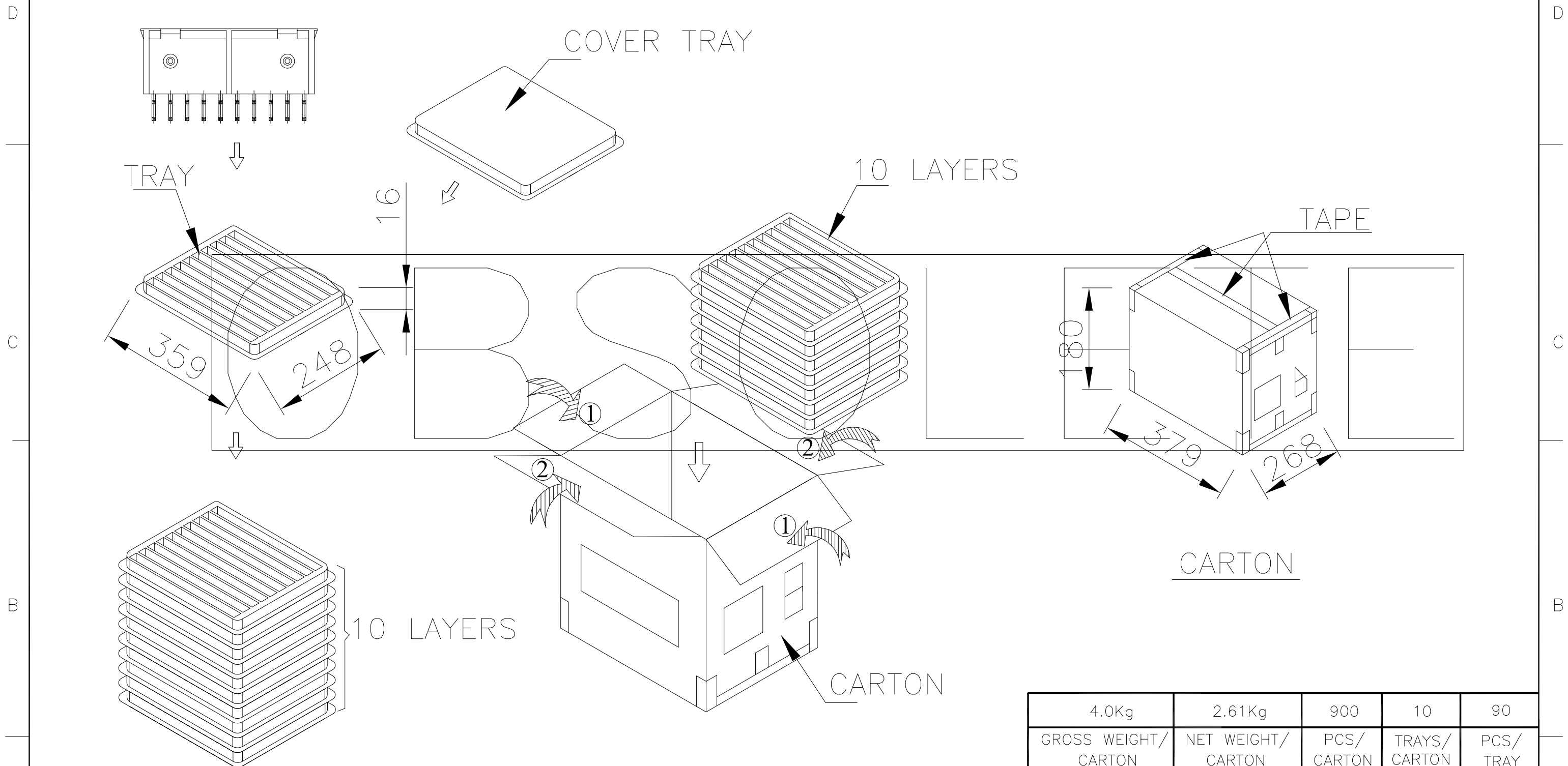
THIS DRAWING IS UNPUBLISHED.

RELEASED FOR PUBLICATION

---

© COPYRIGHT BY TYCO ELECTRONICS CORPORATION. ALL RIGHTS RESERVED.

LOC	DIST	REVISIONS				
P	LTR	DESCRIPTION	DATE	DWN	APVD	
DW	—	SEE SHEET 1.				



4.0Kg	2.61Kg	900	10	90
GROSS WEIGHT/ CARTON	NET WEIGHT/ CARTON	PCS/ CARTON	TRAYS/ CARTON	PCS/ TRAY

THIS DRAWING IS A CONTROLLED DOCUMENT.		DWN J. LEE 03JAN2007	<b>STE</b> TE CONNECTIVITY	
DIMENSIONS: MM		CHK S. HOU 03JAN2007		
TOLERANCES UNLESS OTHERWISE SPECIFIED:		APVD W.J. KE 03JAN2007	NAME 3.0mm BTX POWER, 20 POS, PLUG, R/A, DIP CONNECTOR	
0 PLC ± -		PRODUCT SPEC	SIZE	
1 PLC ± -		—	CAGE CODE	
2 PLC ± -		APPLICATION SPEC	DRAWING NO	
3 PLC ± -		—	A3 00779	
4 PLC ± -		—	C=1775372	
ANGLES ± -		WEIGHT	RESTRICTED TO	
FINISH		—	—	
MATERIAL		CUSTOMER DRAWING	SCALE — SHEET 2 OF 2 REV B	