

# IEL.N SOFT | Mushroom handles

Soft-touch technopolymer



## MATERIAL

High-resilience polypropylene based (PP) technopolymer, coated with "soft-touch" thermoplastic elastomer (TPE) chemically bonded, hardness 70 Shore A, black colour, matte finish.

The coating material is produced from FDA compliant raw material (FDA CFR.21 and EU 10/2011).

## STANDARD EXECUTION

Plain blind hole.

The elastic coupling, by press-fit assembly on h9 tolerance drawn stock bars, is not affected by vibrations and prevents the handle from slipping off (see Technical data on page A-12).

## FEATURES AND APPLICATIONS

The coating, with "soft-touch" elastomer, improves the grip even in the presence of oils, greases and sweat from the hand. For this reason it is suitable for fitness machines, tools and machines for gardening and goods transport, high-precision instruments and disability aids.

## ASSEMBLY INSTRUCTIONS

Fit the handle onto slight chamfered shaft end and push as far as possible by hand or by means of a small press. Alternatively it is possible to tap the handle with a plastic or wooden mallet until firmly in place. In this case we strongly recommend to use a cloth or other suitable soft material over the product to avoid any surface damage.

# IEL.N-H SOFT | Mushroom handles

with lens, Soft-touch technopolymer



## MATERIAL

High-resilience polypropylene based (PP) technopolymer, coated with "soft-touch" thermoplastic elastomer (TPE) chemically bonded, hardness 70 Shore A, black colour, matte finish.

The coating material is produced from FDA compliant raw material (FDA CFR.21 and EU 10/2011).

## MAGNIFYING LENS

Transparent polyamide based (PA-T) technopolymer. Resistant to solvents, oils, greases, petrol and other chemical agents (avoid contact with alcohol). Press-fit assembly. It improves the visibility of the labels.

## STANDARD EXECUTION

Plain blind hole.

The elastic coupling, by press-fit assembly on h9 tolerance drawn stock bars, is not affected by vibrations and prevents the handle from slipping off (see Technical data on page A-12).

## ACCESSORIES ON REQUEST

Self-adhesive labels MA. (see page 632) with standard marks and symbols to be ordered separately.

## ASSEMBLY INSTRUCTIONS

1. See IEL.N SOFT
2. Stick the self-adhesive label (printed on the adhesive side) to the inner surface of the magnifying lens by pressing from the centre to the external side to avoid air bubbles. Assemble the magnifying lens to the handle face recess by gently tapping with a wooden or plastic mallet, until firmly in place. The label is therefore protected by the watertight magnifying lens.

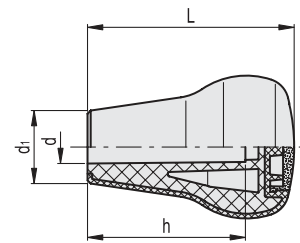
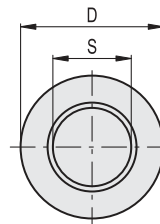
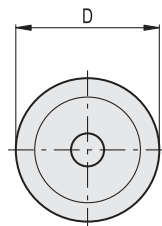
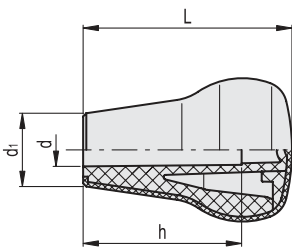


ELESA Original design



ELESA Original design

Conversion Table	
1 mm = 0.039 inch	
L	
mm	inch
47	1.85
65	2.56



### METRIC

Code	Description	D	L	d	d1	h	Δ
26642	IEL.47 N-12 SOFT	45	47	12	28	34	48
26661	IEL.65 N-10 SOFT	45	65	10	23	50	56
26662	IEL.65 N-12 SOFT	45	65	12	23	50	55
26663	IEL.65 N-14 SOFT	45	65	14	23	30	55

### METRIC

Code	Description	D	L	d	S	d1	h	Δ
26672	IEL.65 N-10-H SOFT	45	65	10	25	23	50	56
26671	IEL.65 N-12-H SOFT	45	65	12	25	23	50	55