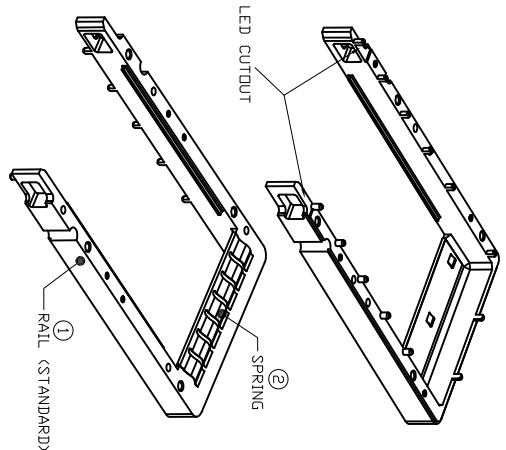
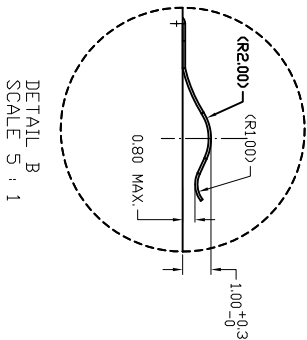
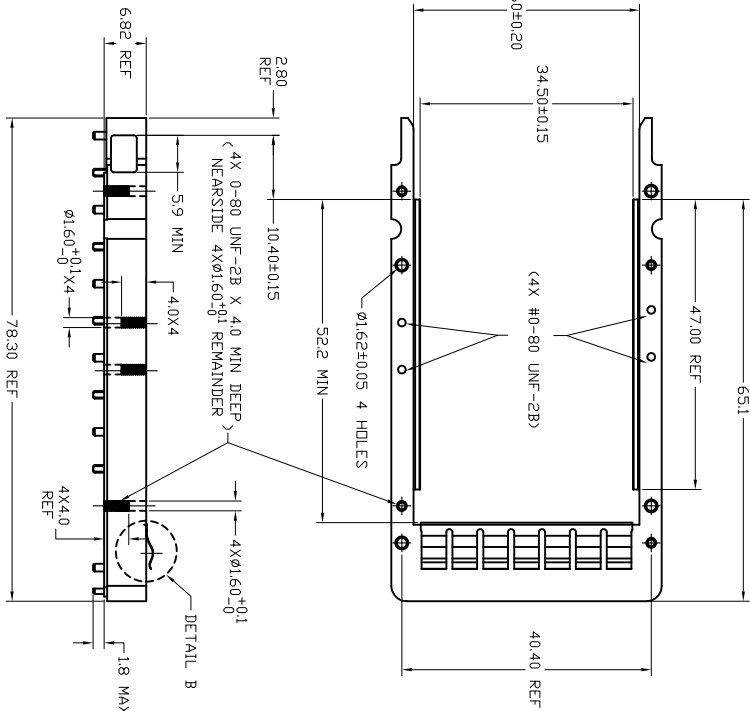
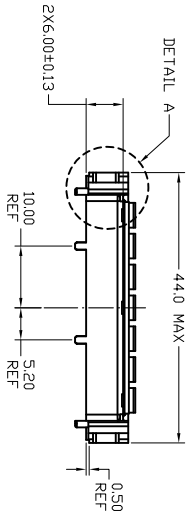
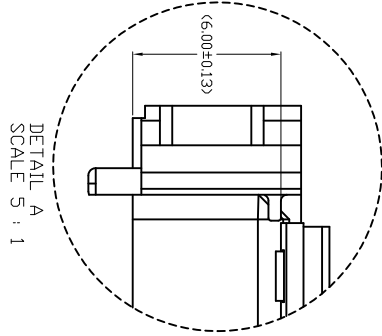


| PART NUMBER | VARIETY (SEC. B-B) | EMI SPRING | EMI SPRING |
|----------------|--------------------|------------------|------------|
| 10074588-101LF | WITH LED CUTOUT | WITH TOP SPRING | SEE PAGE-1 |
| 10074588-001LF | WITHOUT LED CUTOUT | WITH TOP SPRING | SEE PAGE-2 |
| 10074588-102LF | WITH LED CUTOUT | WITHOUT | SEE PAGE-3 |
| 10074588-002LF | WITHOUT LED CUTOUT | WITHOUT | SEE PAGE-4 |
| 10074588-103LF | WITH LED CUTOUT | WITH SIDE SPRING | SEE PAGE-5 |
| 10074588-003LF | WITHOUT LED CUTOUT | WITH SIDE SPRING | SEE PAGE-6 |



- NOTES: (UNLESS OTHERWISE SPECIFIED)
- GUIDE RAIL MATERIAL: ZINC ALLOY.
 - GUIDE RAIL PLATING: 80µ~160µ NICKEL OVER 320µ~500µ COPPER UNDERPLATE.
 - EMI SPRING MATERIAL: COPPER ALLOY.
 - EMI SPRING PLATING: 80µ~150µ MATTE TIN OVER 50µ MIN NICKEL UNDERPLATE.
 - DESIGN ACCEPTS MODULES THAT ARE COMPLIANT WITH X2 SPECIFICATION REV. 206.
 - ROHS COMPLIANT.

| ITEM | DESCRIPTION | MATERIAL | FINISH | QTY |
|------|-------------|-----------------|----------------|-----|
| 1 | RAIL | ZINC ZAMAK-5 | NICKEL PLATING | 1 |
| 2 | SPRING | C5210R-SH 0.10t | TIN PLATING | 1 |

| It | ecn no | dr | date | tolerances unless otherwise specified | CUSTOMER COPY | title | product family | code |
|-------|----------|----|----------|---------------------------------------|---------------|------------------------------------|----------------|------|
| A | T07-1095 | JH | 6/5/07 | X ±.2 | | X2 STANDARD RAIL (WITH TOP SPRING) | 10074588 | |
| B | T07-1148 | JH | 11/19/07 | .XXX | | | | |
| C | T08-1187 | JH | 8/27/08 | 0 ±.1 | | | | |
| D | T08-1192 | JH | 12/4/08 | | | | | |
| E | T09-1010 | JH | 2/11/09 | | | | | |
| sheet | revision | E | E | E | E | E | E | E |
| index | sheet | 1 | 2 | 3 | 4 | 5 | 6 | 7 |



www.fciconnect.com

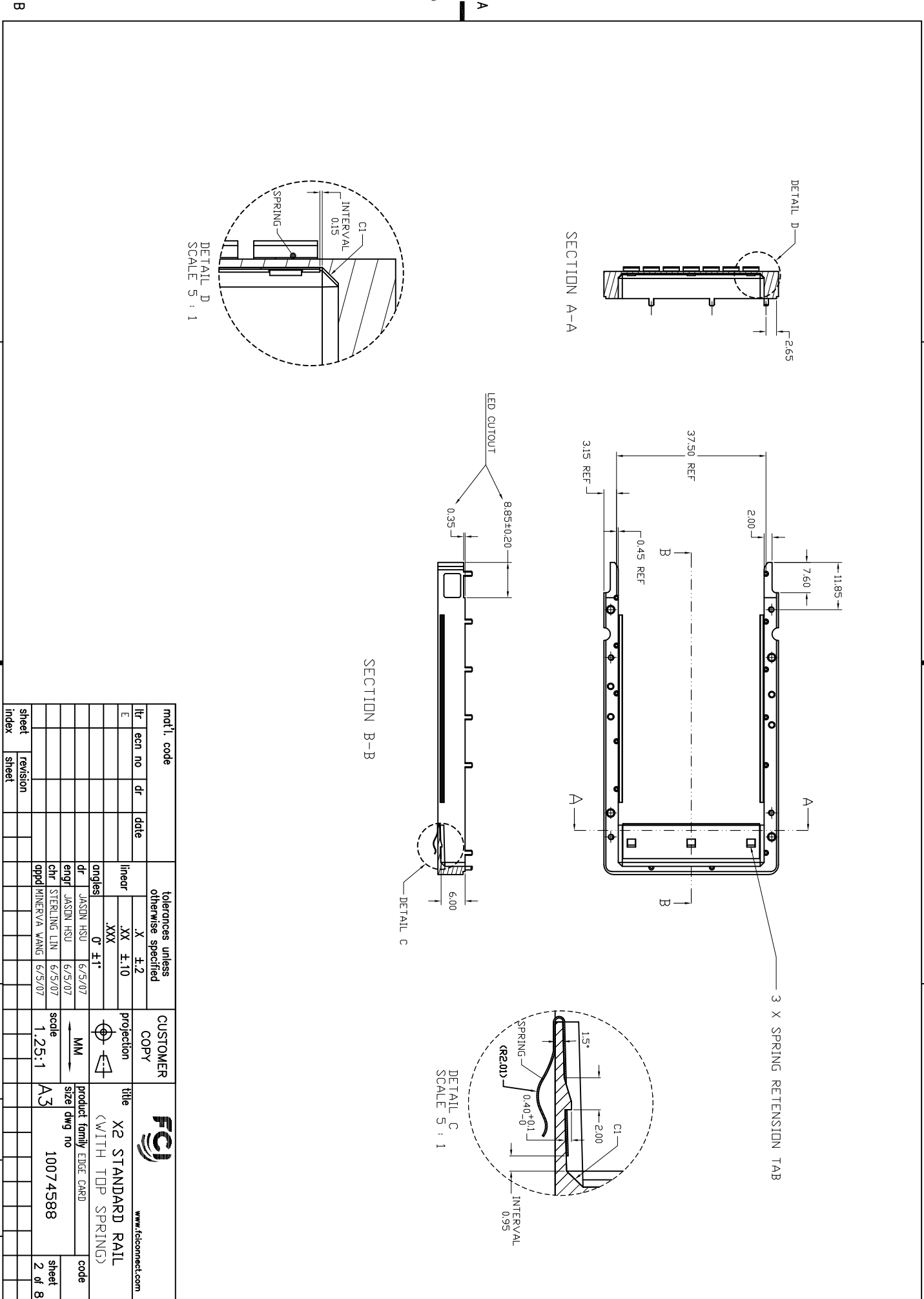
1 2

3

4

ACCAD

cage code



SECTION B-B

SECTION A-A

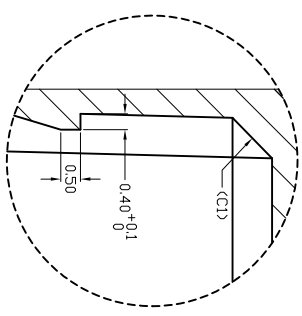
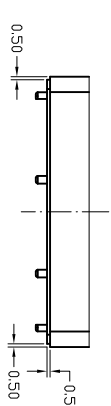
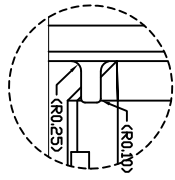
DETAIL D
SCALE S : 1

DETAIL C
SCALE S : 1

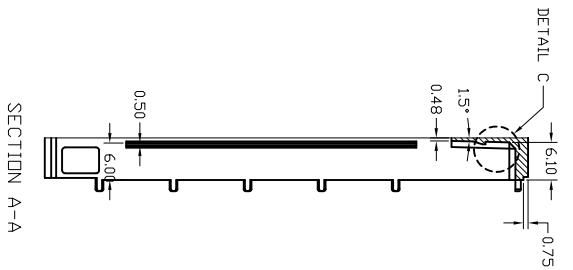
3 X SPRING RETENSION TAB

| | | | | | | | |
|-------------|--|---------------------------------------|--|----------------|--|---------------------------------------|--|
| sheet index | | revision sheet | | cage code | | sheet 2 of 8 | |
| mod'l. code | | tolerances unless otherwise specified | | CUSTOMER COPY | | title | |
| itr | | X ±.2 | | projection | | X2 STANDARD RAIL (WITH TOP SPRING) | |
| ecn no | | XX ±.10 | | MM | | product family EDGE CARD | |
| dr | | .XXX | | scale | | size dwg no | |
| date | | 0° ±1° | | 1.25:1 | | 10074588 | |
| linear | | dr | | product family | | code | |
| angles | | JASON HSU 6/5/07 | | EDGE CARD | | | |
| engr | | JASON HSU 6/5/07 | | code | | | |
| chr | | STERLING LIN 6/5/07 | | | | | |
| pppd | | MINERVA WANG 6/5/07 | | | | | |

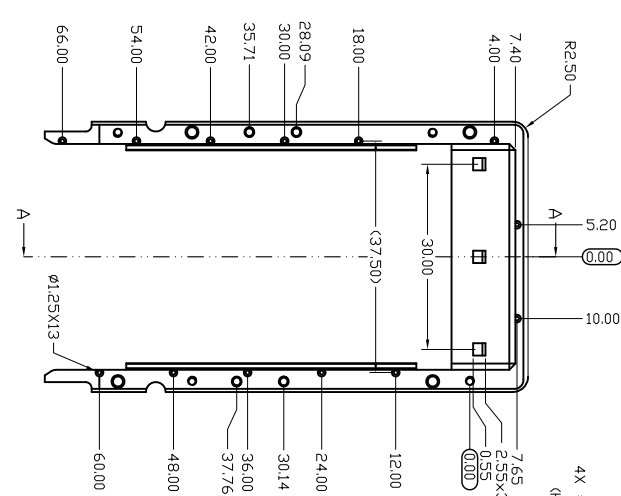
ACAD



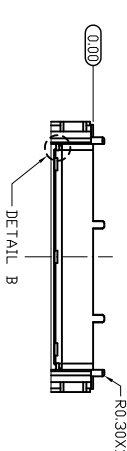
DETAIL C
SCALE 8 : 1



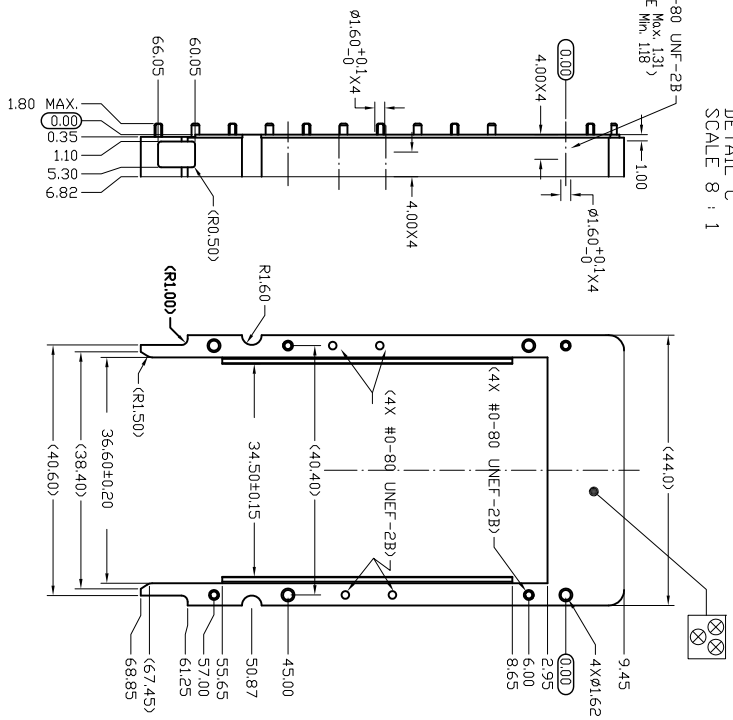
DETAIL C
SCALE 8 : 1



SECTION A-A



DETAIL B



- NOTES: (UNLESS OTHERWISE SPECIFIED)
1. GUIDE RAIL MATERIAL: ZINC ALLOY.
 2. GUIDE RAIL PLATING: 80µ~160µ NICKEL OVER 320µ~500µ COPPER UNDERPLATE.
 3. DESIGN ACCEPTS MODULES THAT ARE COMPLIANT WITH X2 SPECIFICATION REV. 2.06.
 4. ROHS COMPLIANT.

| ITEM | DESCRIPTION | MATERIAL | FINISH | QTY |
|------|-------------|--------------|----------------|-----|
| 1 | RAIL | ZINC ZAMAK-5 | NICKEL PLATING | 1 |

| mod'l. code | | tolerances unless otherwise specified | | CUSTOMER COPY | | FCI | |
|-------------|----------|---------------------------------------|--------|--------------------------|------------|-----------------------------------|----------------|
| itr | ecn no | dr | date | linear | projection | title | product family |
| E | | | | XX ±.10 | MM | X2 STANDARD RAIL (WITHOUT SPRING) | EDGE CARD |
| | | | | .XXX | | | |
| | | | | 0 ±.1 | | | |
| | | | | engr JASON HSU 6/5/07 | | | |
| | | | | chr STERLING LIN 6/5/07 | | | |
| | | | | pppd MINERVA WANG 6/5/07 | | | |
| sheet | revision | scale | size | product family | code | sheet | code |
| index | sheet | 1.25:1 | dwg no | EDGE CARD | 10074588 | 3 of 8 | |

ACAD

3

4

1 2

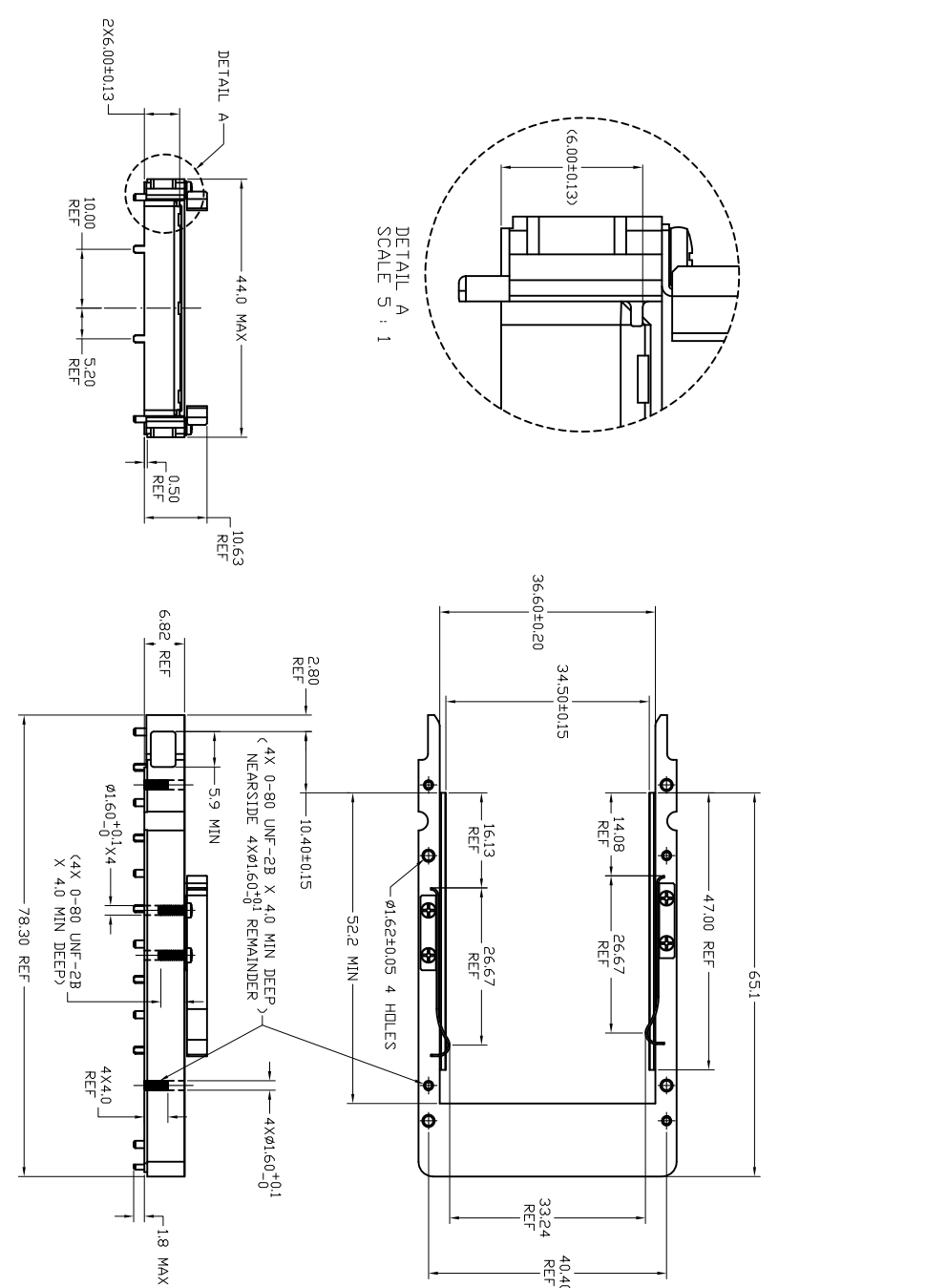
3

4

B A A

| ITEM | DESCRIPTION | MATERIAL | FINISH | QTY |
|------|--------------|--|---------------------------|-----|
| 1 | RAIL | ZINC ZAMAK-5 | NICKEL PLATING | 1 |
| 2 | LEFT SPRING | TYPE 301, 1/2 HARD STAINLESS STEEL 0.020±0.005 THICK. | PASSIVATED PER ASTM A967. | 1 |
| 3 | RIGHT SPRING | TYPE 301, 1/2 HARD STAINLESS STEEL 0.020±0.005 THICK. | PASSIVATED PER ASTM A967. | 1 |
| 4 | #0-80 SCREW | 302 STAINLESS STEEL. | PASSIVATED PER ASTM A967. | 4 |

NOTES: (UNLESS OTHERWISE SPECIFIED)
 1. GUIDE RAIL MATERIAL: ZINC ALLOY.
 2. EMI SPRING MATERIAL: STAINLESS STEEL.
 3. DESIGN ACCEPTS MODULES THAT ARE COMPLIANT WITH X2 SPECIFICATION REV. 2.0b.
 4. ROHS COMPLIANT.



| mat'l. code | | tolerances unless otherwise specified | | CUSTOMER COPY | | title | |
|-------------|----------|---------------------------------------|------|---------------|--------------|------------|--------------------------|
| lfr | ecn no | dr | date | linear | angles | projection | product family EDGE CARD |
| E | | | | .XX ±.10 | .XXX | MM | 10074588 |
| | | | | | 0° ±1° | | 10074588 |
| | | | | engr | JASON HSU | 6/5/07 | 10074588 |
| | | | | chr | STERLING LIN | 6/5/07 | 10074588 |
| | | | | appd | MINERVA WANG | 6/5/07 | 10074588 |
| sheet index | revision | | | | | | |

FCI
 www.fciconnect.com

X2 STANDARD RAIL
 (WITH SIDE SPRING)

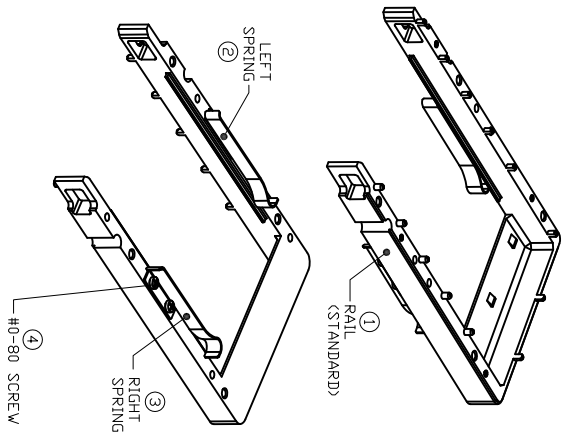
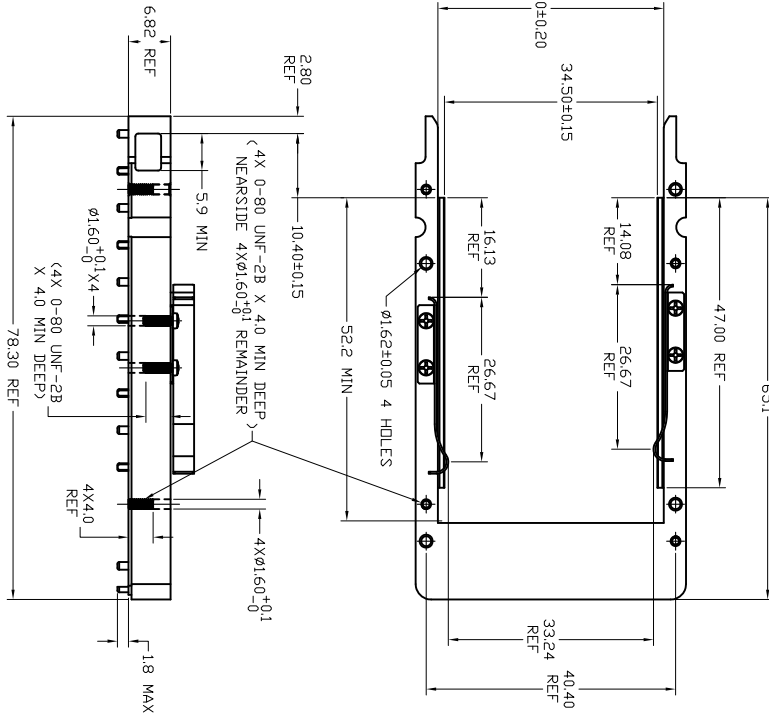
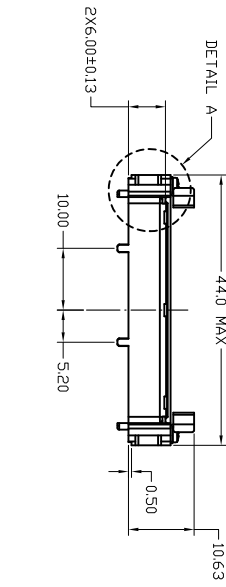
product family EDGE CARD
 size dwg no 10074588
 code

B A A

B

| ITEM | DESCRIPTION | MATERIAL | FINISH | QTY |
|------|--------------|---|--------------------------|-----|
| 1 | RAIL | ZINC ZAWAK-5 | NICKEL PLATING | 1 |
| 2 | LEFT SPRING | TYPE 301, 1/2 HARD STAINLESS STEEL .020±.0005 THICK. | PASSIVATED PER ASTM A967 | 1 |
| 3 | RIGHT SPRING | TYPE 301, 1/2 HARD STAINLESS STEEL .020±.0005 THICK. | PASSIVATED PER ASTM A967 | 1 |
| 4 | #0-80 SCREW | 302 STAINLESS STEEL. | PASSIVATED PER ASTM A967 | 4 |

- NOTES: (UNLESS OTHERWISE SPECIFIED)
1. GUIDE RAIL MATERIAL: ZINC ALLOY.
 2. GUIDE RAIL PLATING: 80μ~160μ NICKEL OVER 320μ~500μ COPPER UNDERPLATE.
 3. EMI SPRING MATERIAL: STAINLESS STEEL.
 4. DESIGN ACCEPTS MODULES THAT ARE COMPLIANT WITH X2 SPECIFICATION REV. 2.0B.
 5. ROHS COMPLIANT.



AGAD

| modl. code | | tolerances unless otherwise specified | | CUSTOMER COPY | | title | |
|-------------|--------|---------------------------------------|------|---------------|---------|------------|-------------------------------------|
| ltr | ecn no | dr | date | linear | angles | projection | product family EDGE CARD |
| E | | | | XX ±.10 | 0° ±.1° | NM | X2 STANDARD RAIL (WITH SIDE SPRING) |
| | | | | | | | product dwg no 10074588 |
| | | | | | | | scale 1.25:1 |
| sheet index | | revision sheet | | | | | product family EDGE CARD |
| | | | | | | | code |
| | | | | | | | size 6 of 8 |

1 2

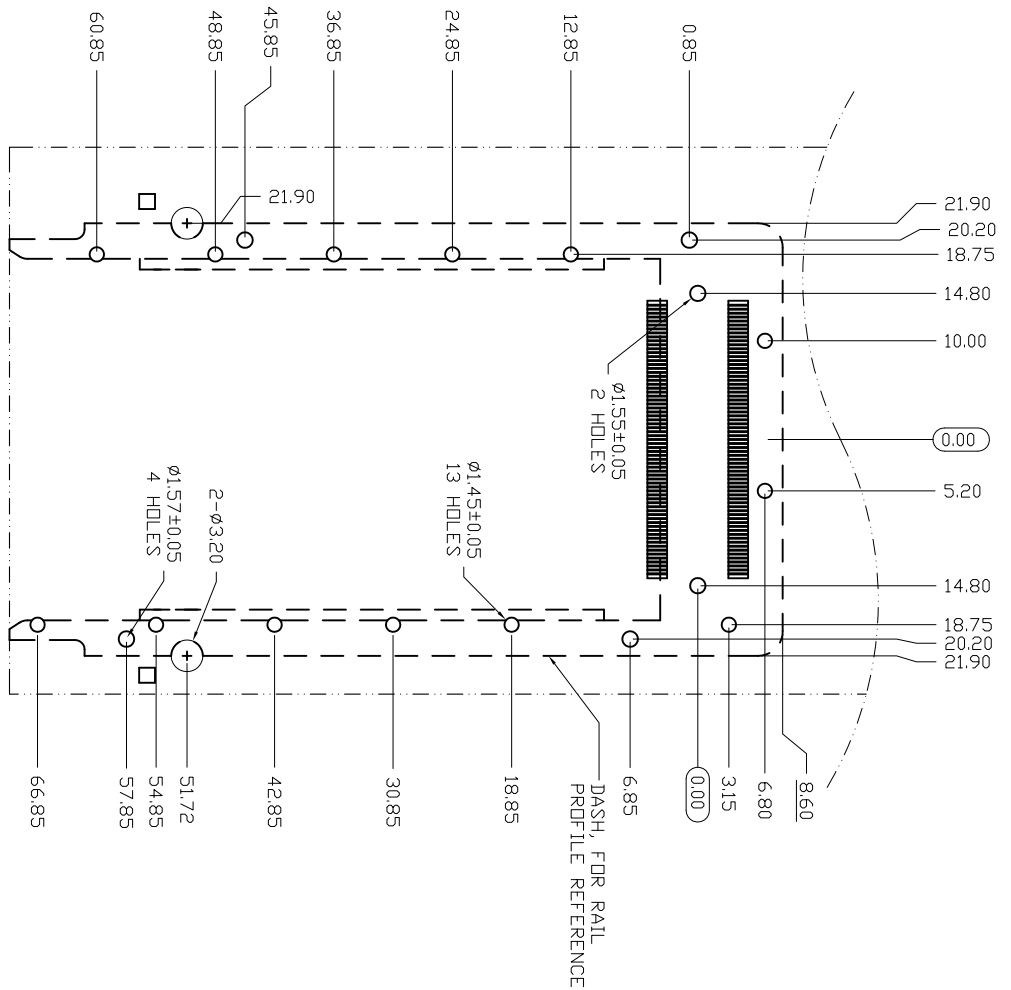
3

4

1 2

3

4



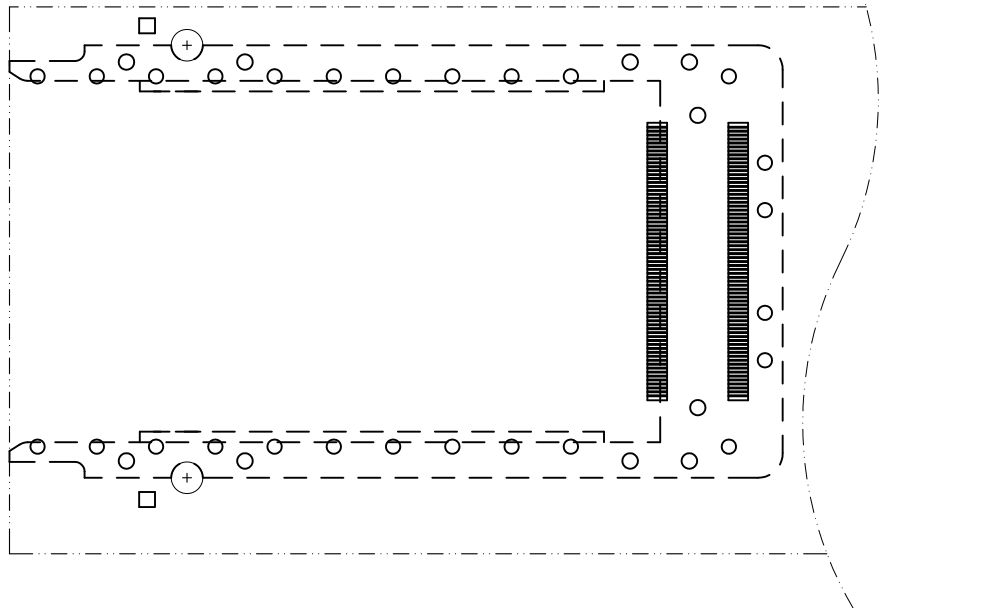
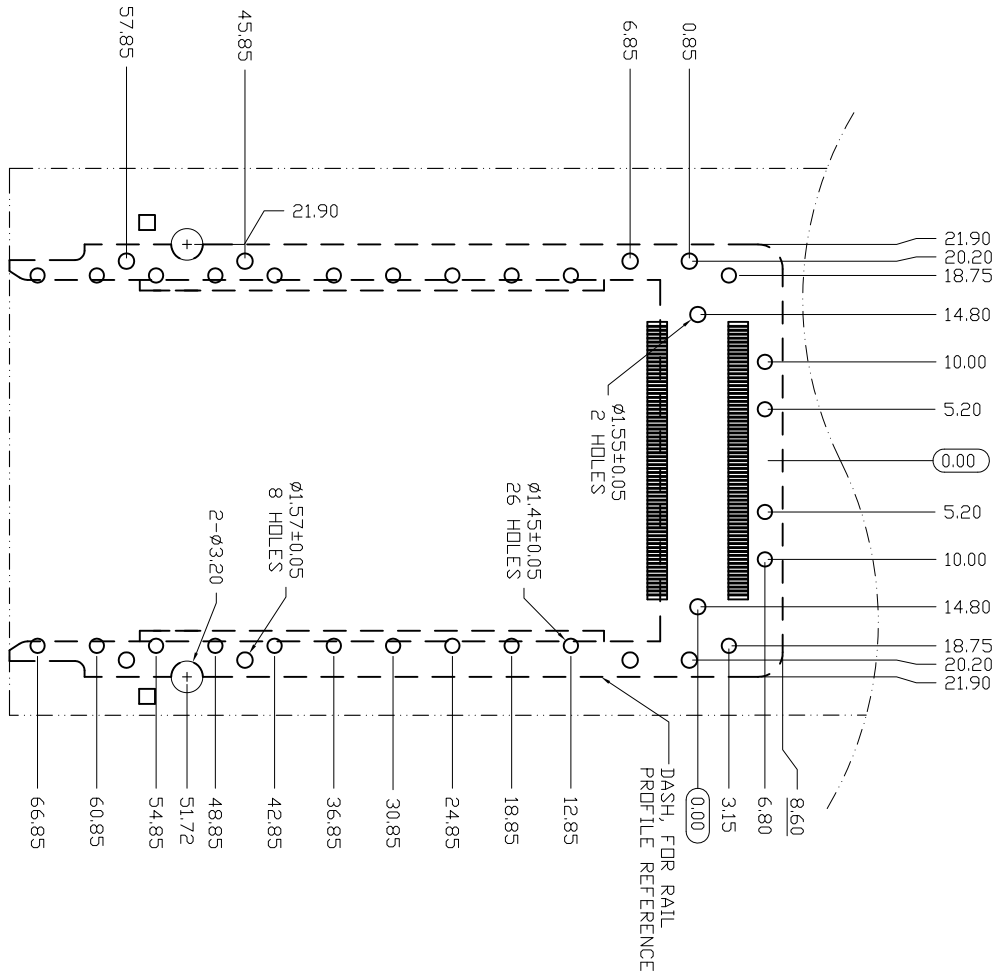
RECOMMENDED PCB LAYOUT
(FOR SINGLE RAIL)

| mod'l. code | | tolerances unless otherwise specified | | CUSTOMER COPY | | FCI | |
|-------------|----------|---------------------------------------|------|-------------------|--------|------------|--------------------------|
| itr | ecn no | dr | date | linear | angles | projection | title |
| E | | | | XX ±.10 | 0° ±1° | MM | X2 STANDARD RAIL |
| | | | | .XXX | | | product family EDGE CARD |
| | | | | dr JASON HSU | 6/5/07 | | size dwg no 10074588 |
| | | | | enqr JASON HSU | 6/5/07 | | code |
| | | | | chr STERLING LIN | 6/5/07 | scale 2:1 | sheet 7 of 8 |
| | | | | pppd MINERVA WANG | 6/5/07 | | |
| sheet index | revision | sheet | | | | | |

ACAD

3

4



| | | | | | | | | | |
|-------------|----------|---------------------------------------|------|--------------------------|------------|------------------|----------------|--------------------|--------|
| mod'l. code | | tolerances unless otherwise specified | | CUSTOMER COPY | | FCI | | www.fciconnect.com | |
| itr | ecn no | dr | date | linear | projection | title | product family | code | |
| E | | | | XXX ±.10 | MM | X2 STANDARD RAIL | EDGE CARD | | |
| | | | | .XXX | 2:1 | | 10074588 | sheet | 8 of 8 |
| | | | | 0° ±1° | | | | | |
| | | | | engr JASON HSU 6/5/07 | | | | | |
| | | | | chr STERLING LIN 6/5/07 | | | | | |
| | | | | pppl MINERVA WANG 6/5/07 | | | | | |
| sheet | revision | | | | | | | | |
| index | sheet | | | | | | | | |

ACAD

3

4