

MATERIALS AND FINISHES

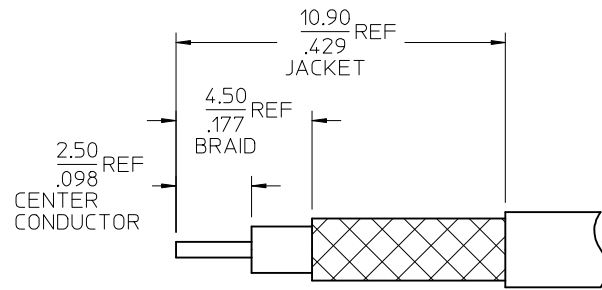
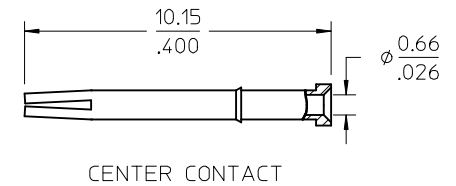
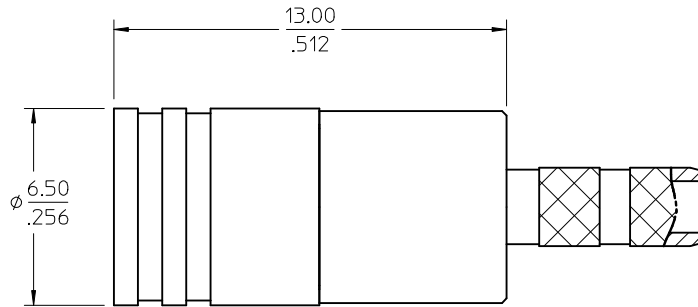
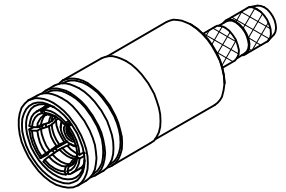
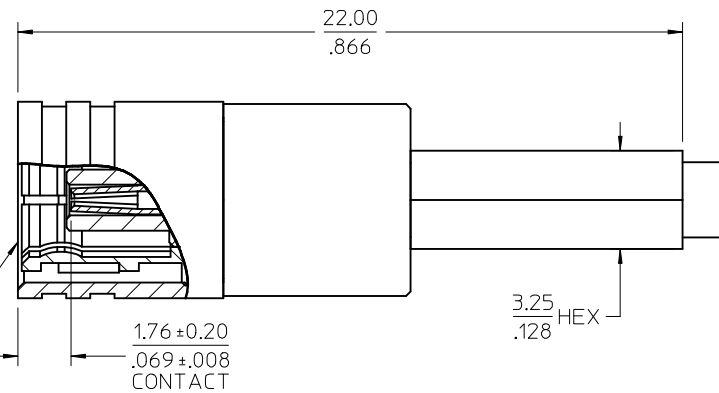
BODY, FERRULE: BRASS
PLATED GOLD

CENTER CONTACT: BERYLLIUM COPPER
PLATED GOLD

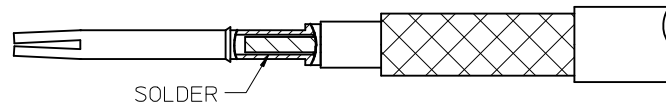
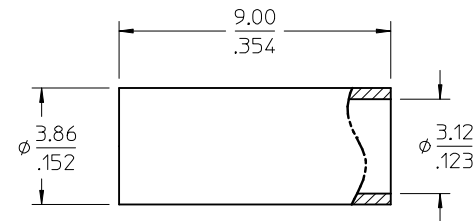
INSULATOR: TEFLON

RETAINING RING: BERYLLIUM COPPER

SMB PLUG
INTERFACE



RECOMMENDED CABLE STRIP



73396-0600	SMALL TRAY PACKING
73404-2310	73100-0248, ONE PER BAG
73100-0248	TRAY
PART NO.	PACKAGING

PS-89675-3540	ELECTRO/MECH PERFORM.
SPECIFICATION	DESCRIPTION

CHG: MODIFIED ISO VIEW, ADDED CABLE/CONTACT VIEW EC NO: URF-2016-0438 2015/12/09 DRW: N:SSHAH CHKD: APPR: AROBERTSON, 2015/12/09 REV: B6	QUALITY SYMBOLS
	▽=0 ▽=0

GENERAL TOLERANCES (UNLESS SPECIFIED)	
mm	INCH
4 PLACES ± .005	± .0005
3 PLACES ± .005	± .0005
2 PLACES ± .005	± .0005
1 PLACE ± .005	± .0005
ANGULAR ± 2°	
DRAFT WHERE APPLICABLE MUST REMAIN WITHIN DIMENSIONS	

DIMENSION STYLE	
MM/IN	
DRAWN BY	DATE
FIELDS	1995/08/10
CHECKED BY	DATE
APPROVED BY	DATE
JWIENER	2010/12/07
MATERIAL NO.	SEE TABLE

SCALE	DESIGN UNITS	THIRD ANGLE PROJECTION
	METRIC	
TITLE		
SMB PLUG STR FOR RG316 CABLE 50 OHMS SMB-PC		
MOLEX INCORPORATED		SHEET NO.
DOCUMENT NO.		1 OF 1
SD-73100-0248		