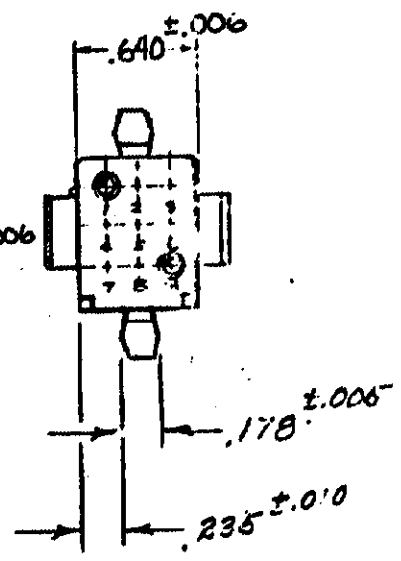
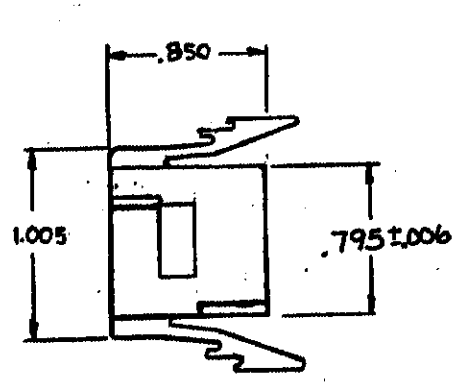
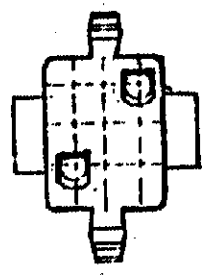


SHEET I OF II
NUMBER
480274



NOTE-
 1- TO BE USED WITH MATE-N-LOK SOCKETS.
 2- TO BE USED WITH CAP HOUSING 480277.
 3- SEE SHEET II FOR MOUNTING INFORMATION.

HOUSING N ^o	COLOR
1-480274-0	NATURAL

DIMENSIONS IN INCHES. DO NOT SCALE PRINT.

P	OBS. 1--1 PER CM 2708	TB	RS	1-11-78	
N	OBS. 1--2, 1--7 & 1--9 PER CM-895	PKC	TB	6/17/87	
M	OBS. 1--341-6 PER CM-158	PKC	TB	4/21/87	
L	OBSOLETE 1--4, 1--5 1--6 PER CM-473 REV PER CM-399		RS	5/24/84	
LTR	REVISION RECORD	DR	CHK	DATE	

©1964 BY AMP INCORPORATED. ALL RIGHTS RESERVED. AMP PRODUCTS COVERED BY PATENTS AND/OR PATENTS PENDING.

**CUSTOMER COPY
REFERENCE ONLY**

MATERIAL
NYLON

AMP AMP INCORPORATED
HARRISBURG, PENNA.

CLASS **.086 SOCKET HOUSING**

WIRE — RANGE — INSULATION
— — — SINGLE .130 MAX
DOUBLE .115 MAX

TYPE **PANEL MOUNT**

TOLERANCE EXCEPT AS NOTED ±.010 ±.1°

LOC CM **A** NO SHEET I OF II
480274

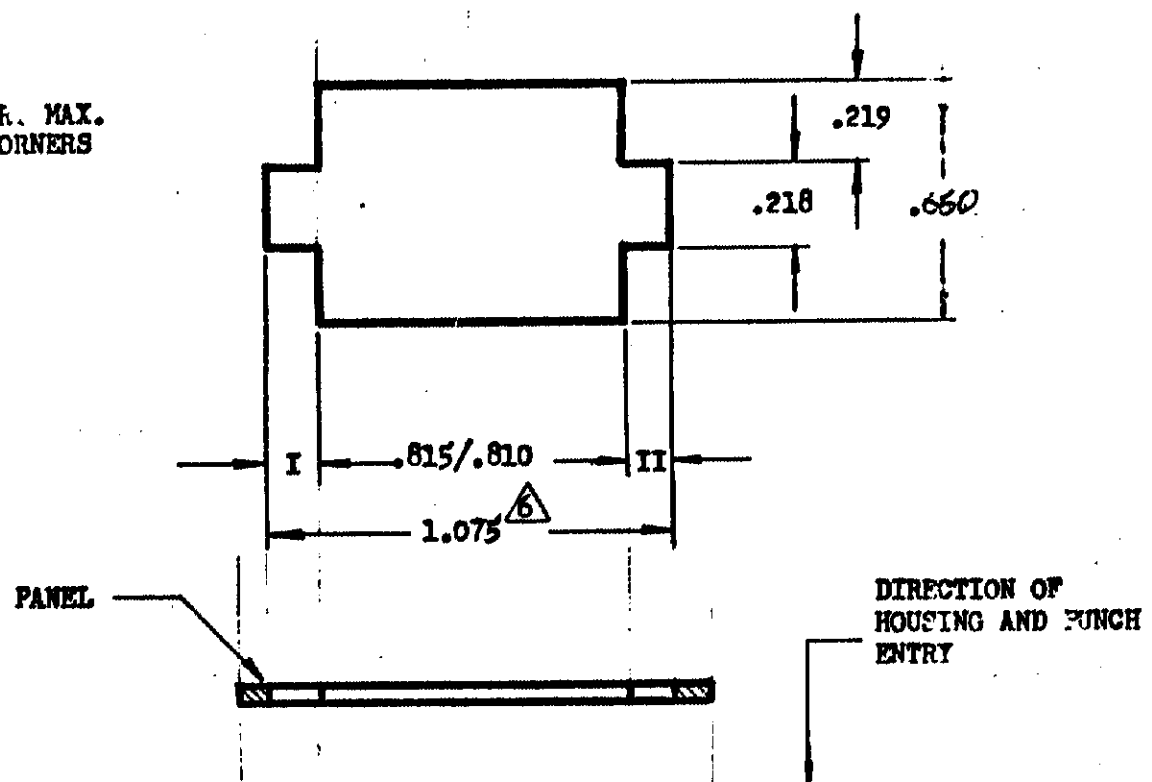
REV **P**

NAME **9 CIRCUIT MATE-N-LOKSM PLUG**

PRINT-DIST. **53**
 C.R. STOYER 11/24
 DE R.W. Williams 11-11-81
 APP 4/21/87 11/10/84

SHEET 2 OF
NUMBER
480274

.015 R. MAX.
ALL CORNERS



- NOTE: 1. Recommended panel thickness .025-.065.
2. Both locking legs to be squeezed together and housing to be inserted straight-in, as opposed to a rocking manner of insertion.
3. The panel must be punched so that the housing enters the panel in the same direction as the punch.
4. Dimensions I and II to be equal within .005.
5. Panel must not have any material (paint, porcelain, etc.) applied in the mounting hole area that would decrease retention of the housing in the panel.
- ⚠️ If Notes 3 and/or 5 are not complied with, the 1.075 dimension should be reduced to 1.055 to assure proper housing retention in the panel.

DIMENSIONS IN INCHES. DO NOT SCALE PRINT.

PRINT DIST
53

				©1972 BY AMP INCORPORATED. ALL RIGHTS RESERVED. AMP PRODUCTS COVERED BY PATENTS AND/OR PATENTS PENDING		CUSTOMER COPY REFERENCE ONLY			
				MATERIAL AND FINISH		AMP INCORPORATED HARRISBURG, PENNA.			
				WIRE — RANGE — INSULATION		CLASS			
				TYPE		TYPE			
LYR	REVISION RECORD	ECN	DR CHK	DATE	TOLERANCE EXCEPT AS NOTED ± .005	SCALE E 1" = 0"	L' CM	NO A 480274	REV P
DR DAYTON HOLMES 7-26-72		DE		NAME RECOMMENDED MOUNTING INFORMATION		9 CIRCUIT MATE-N-LOK™ PANEL MOUNT PLUG			
CHK Thumler 7-26-72		APP Thumler 7-26-72							