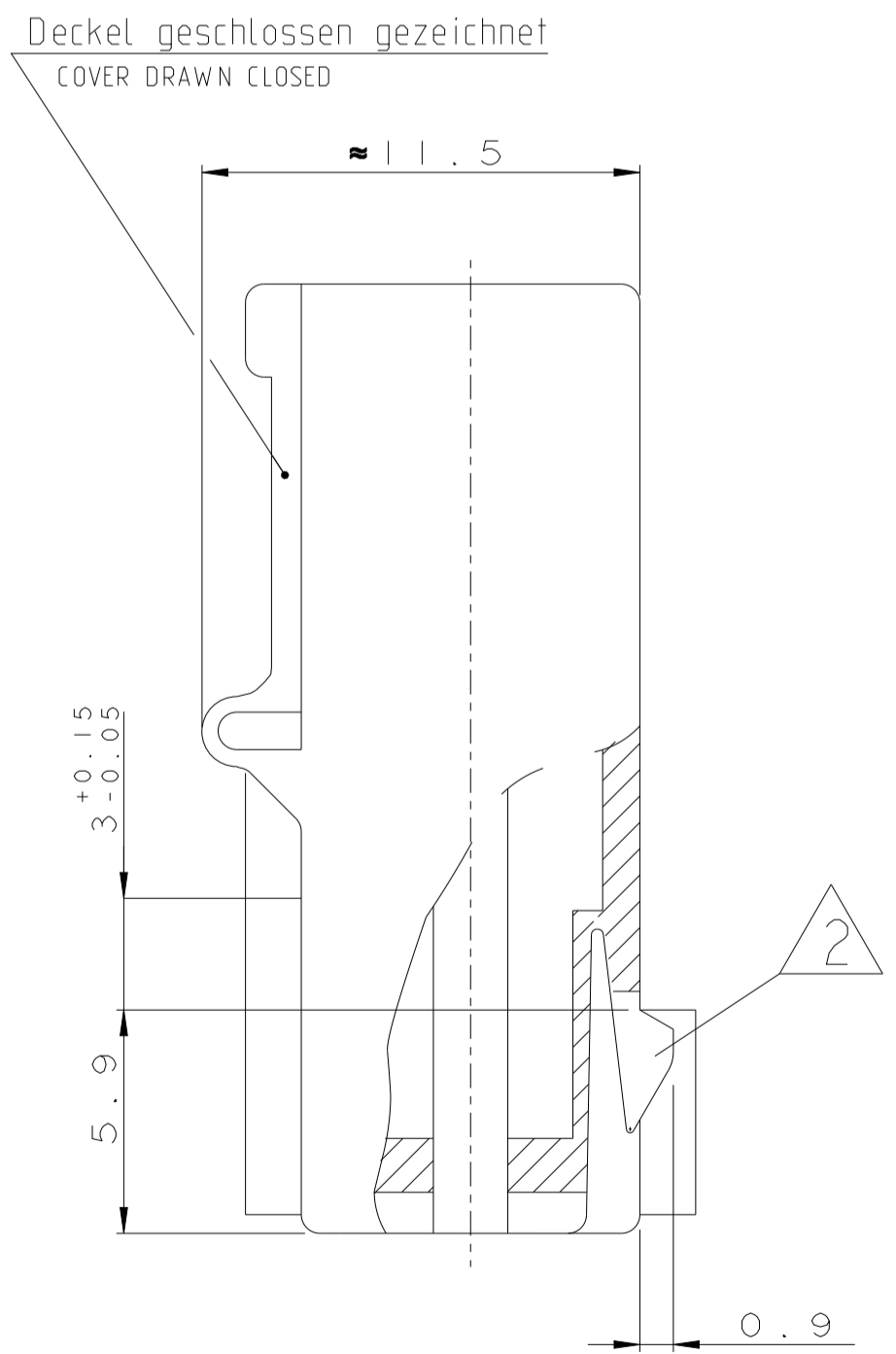
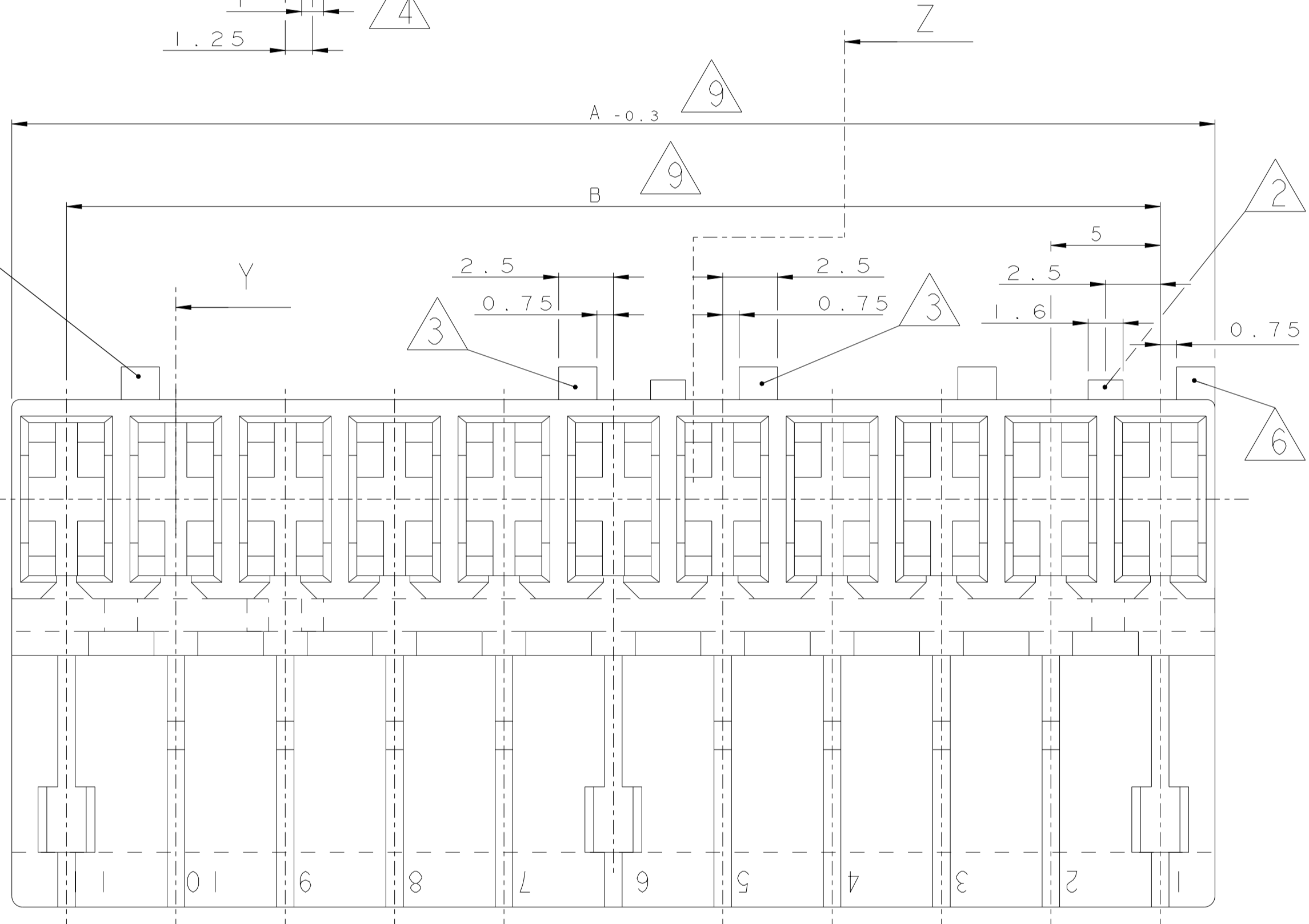
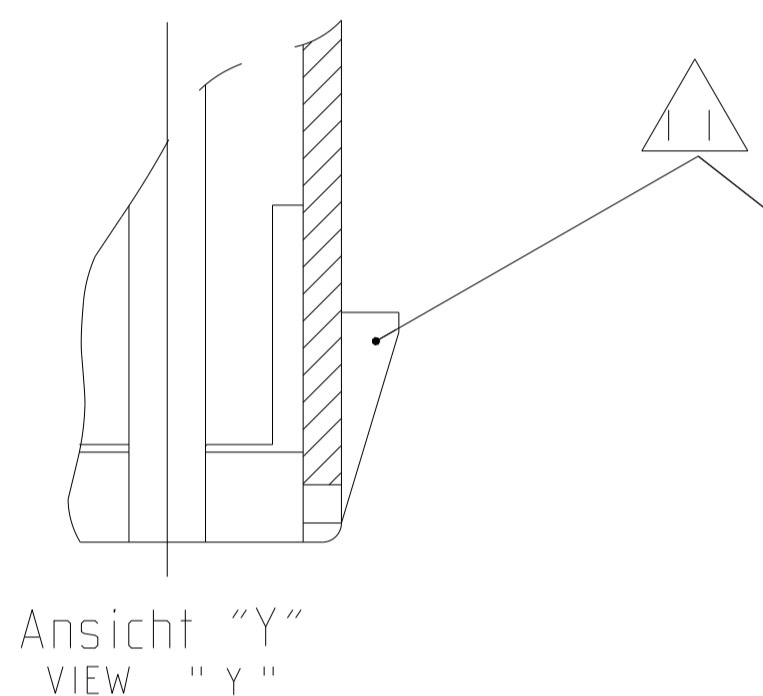
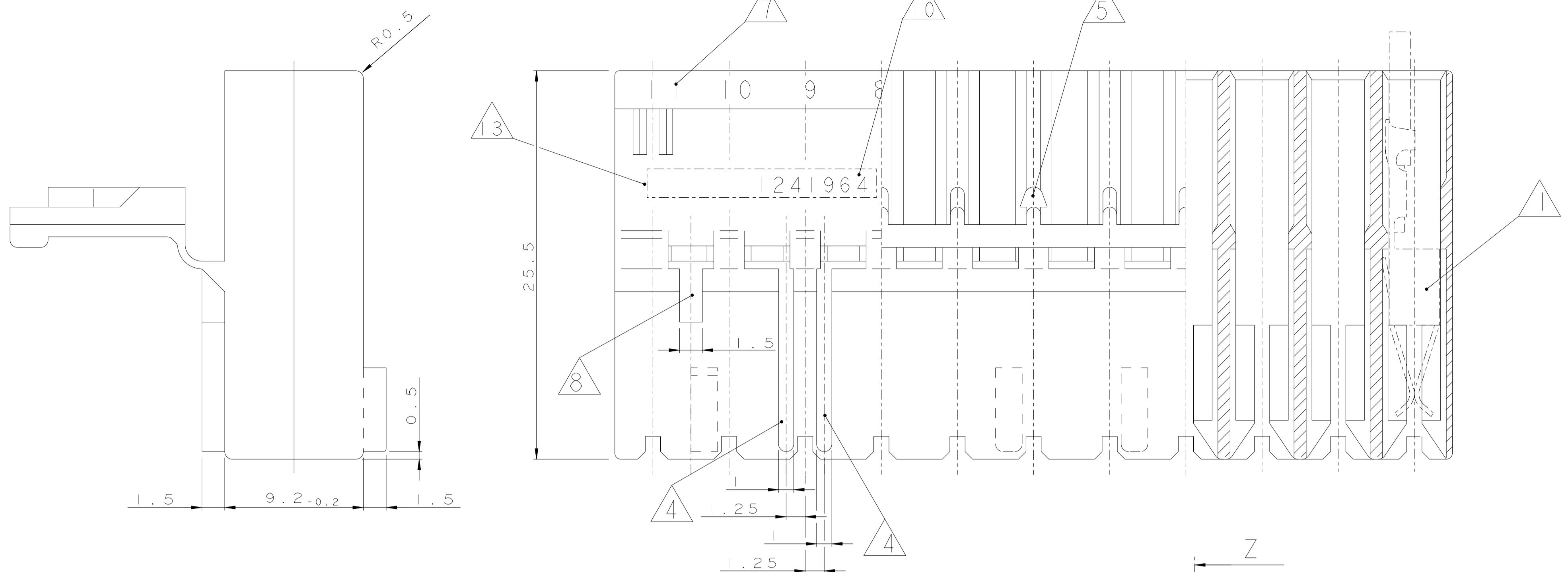


REVISIONS				
REV	DATE	DESCRIPTION	BY	APPV
A20	08 JUN 2022	ECR-22-141752	PJ	FL
A21	23 JUN 2022	ECR-22-143367	TL	FL
A22	25 MAY 2023	ECR-23-174540	SM	FL



Ansicht "Z" VIEW "Z"

- Bemerkungen  
NOTES
- 1 Kammer geeignet für AMP Timer-Kontakte: PN 926965  
CAVITY SUITABLE TO AMP TIMER-CONTACTS: PN 926973  
PN 926005  
PN 926006  
PN 927833  
PN 927837
  - 2 Rasthaken zwischen Kammer Nr. ... (siehe Blatt 2 von 2)  
LOCKING LATCH BETWEEN CAVITY NO. ... (SEE SHEET 2 OF 2)
  - 3 Kodierrippen nach unten (Lage "c") oder oben (Lage "d")  
versetzt, bei Kammer Nr. ... (siehe Blatt 2 von 2)  
KEYING RIB POSITION "c" OR POSITION "d",  
AT CAVITY NO. ... (SEE SHEET 2 OF 2)
  - 4 Polarisierungsrippen durchgehend bis Scharnier, nach unten (Lage "a")  
oder oben (Lage "b") versetzt, bei Kammer Nr. ... (siehe Blatt 2 von 2)  
POLARIZATION RIB GO THROUGH TO HINGE, POSITION "a" OR  
"b", AT CAVITY NO. ... (SEE SHEET 2 OF 2)
  - 5 Verriegelung für Deckel bei Kammer Nr. ... (siehe Blatt 2 von 2)  
LOCKING DEVICE FOR COVER AT CAVITY NO. ... (SEE SHEET 2 OF 2)
  - 6 Kodierrippen bei erster Kammer, Lage "c", und letzter Kammer, Lage "d",  
bündig mit Gehäuseaußenkante  
KEYING RIBS AT THE FIRST CAVITY, POSITION "c", AND THE LAST CAVITY, POSITION "d",  
FLUSH TO THE EDGE OF THE CONNECTOR
  - 7 Kammernummer  
CAVITY NUMBER
  - 8 Tiefenanschlag zwischen Kammer Nr. 1 und 2, ebenfalls  
zwischen der letzten und vorletzten Kammer  
MATING STOP BETWEEN CAVITY NO. 1 AND 2, ALSO  
BETWEEN THE LAST AND THE LAST BUT ONE CAVITY
  - 9 Maß A und Maß B siehe Blatt 2 von 2  
DIMENSION A AND DIMENSION B SEE SHEET 2 OF 2
  - 10 TE Part Number (OPTIONAL)
  - 11 Angeschwägte Kodierrippen nach unten (Lage "c") oder oben (Lage "d")  
versetzt, bei Kammer Nr. ... (siehe Blatt 2 von 2)  
SWAGED KEYING RIB POSITION "c" OR POSITION "d",  
AT CAVITY NO. ... (SEE SHEET 2 OF 2)
  - 12 Material entspricht den Anforderungen der EN 60335 (incl. glow wire test  
750°C, ohne Flamme)  
MATERIAL CORRESPONDS TO REQUIREMENT EN 60335 (INCL. GLOW WIRE TEST 750°C,  
NO FLAME)
  - 13 AREA FOR TYCO ELECTRONICS LOGO ACC. TO SPEC. 202-36  
Bereich für TYCO ELECTRONICS Logo nach Spec. 202-36
  - 14 Passender TE Gegenstecker: (siehe Stückliste)  
MATED WITH TE CONNECTOR: (SEE PARTS LIST)
  - 15 Generell passende Flachsteckerwanne siehe RAST5 Vorgabe  
GENERAL SUITABLE TAB HEADER HOUSING SEE RAST5 PERFORMANCE
  - 16 Leiterplattenanschluß siehe Zeichnung 88-9935-2  
CONNECTION TO THE PC BOARD SEE DRAWING 88-9935-2

- 17 PRELIMINARY PART NOT RELEASED FOR PRODUCTION
- 18 MATERIAL ACC. TO UL94-V0 AND GWEPT  
750°C NO FLAME
- 19 DOUBLE SOURCE RESIN: ALTERNATIVE RESIN UNDER APPROVAL

Tabelle mit Ausführungsvarianten  
und Bestellnummern auf Blatt 2 von 2

LIST WITH DIFFERENT STYLINGS AND  
PARTNUMBERS SEE SHEET 2 OF 2

THIS DRAWING IS A CONTROLLED DOCUMENT.

OWNER: Manke, B	DATE: 28-NOV-02
CHK: Stredak, F	DATE: 28-NOV-02
APVD: Bleicher, M	DATE: 30-NOV-02

NAME: 2-11 POS. STANDARD-TIMER HOUSING WITH INTERIOR LOCKING, PITCH 5mm

SIZE: 108-18049-1

WEIGHT: -

CUSTOMER DRAWING

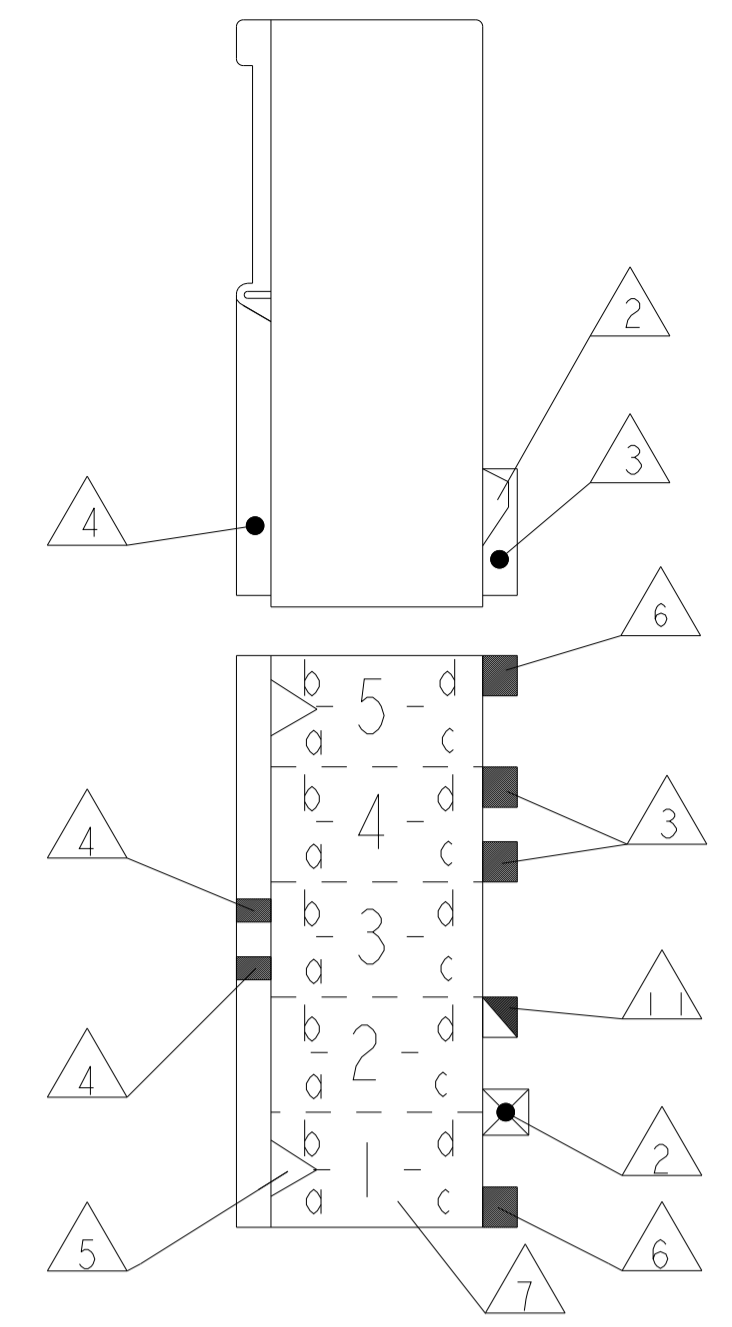
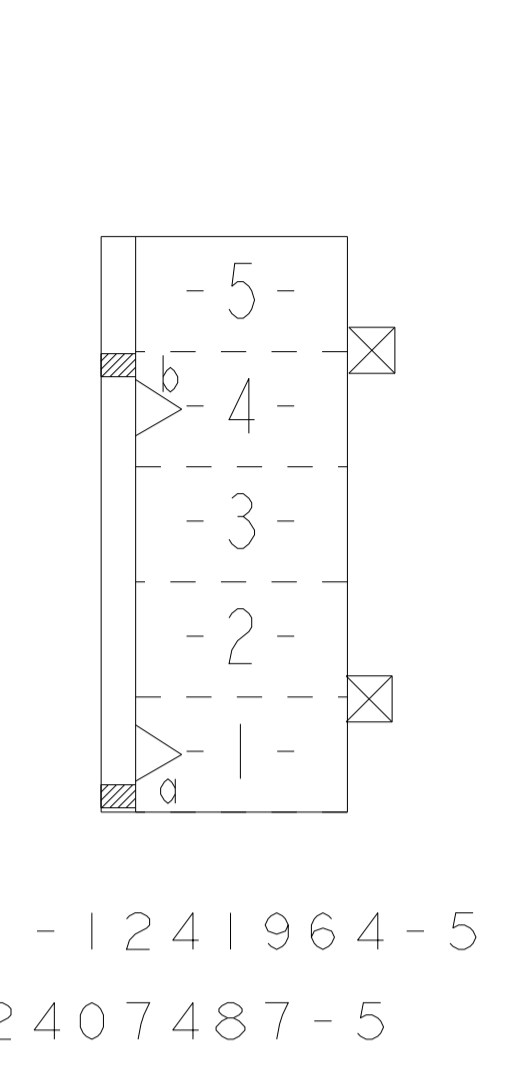
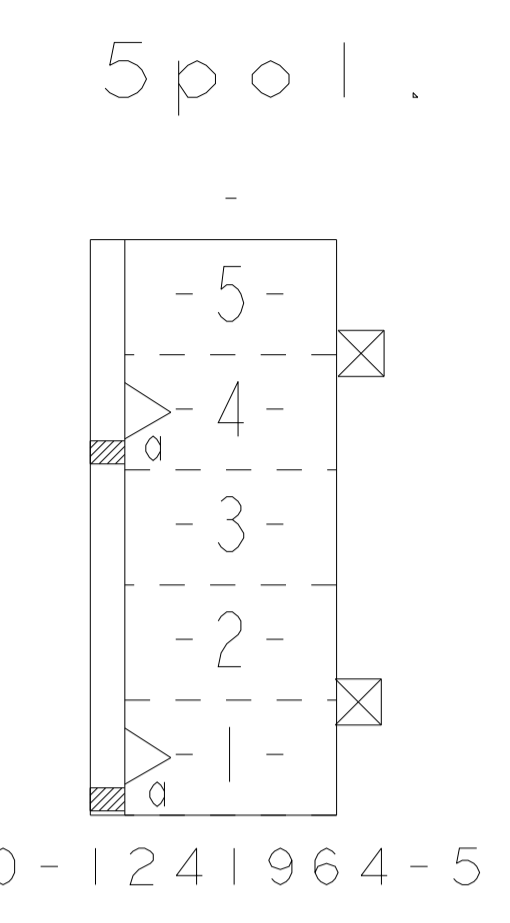
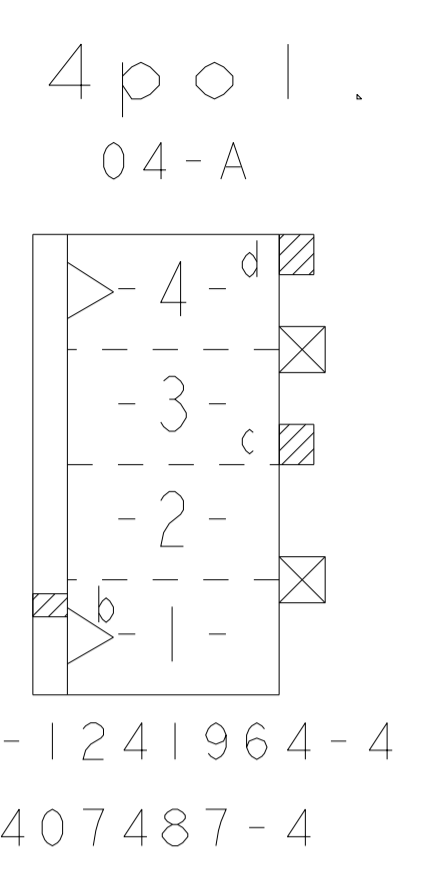
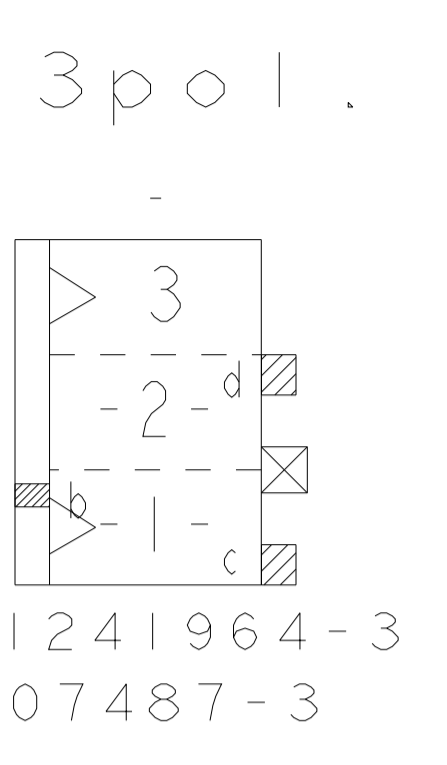
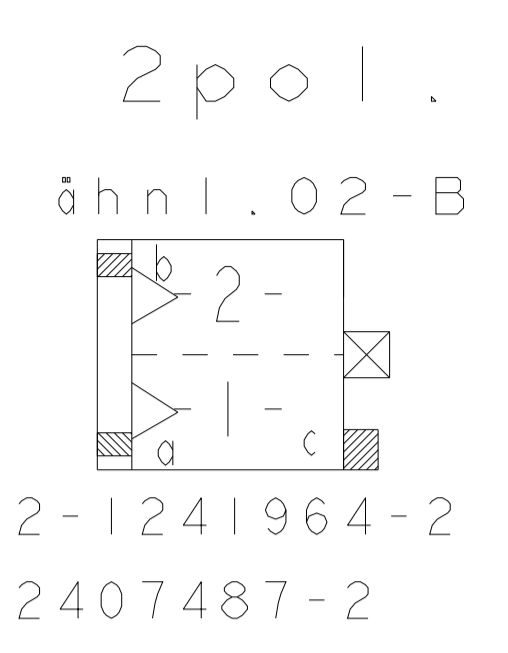
SCALE: 1:1 SHEET 1 OF 2 REV: A22

SEE SHEET 2/2 / siehe Blatt 2/2

CUSTOMER PART NO	AMP PART NO	REV	PCS	MATERIAL	SURFACE COLOR	DESCRIPTION	ITEM NO
-	-	-	-	-	-	-	-
-	-	-	-	-	-	-	-
-	-	-	-	-	-	-	-

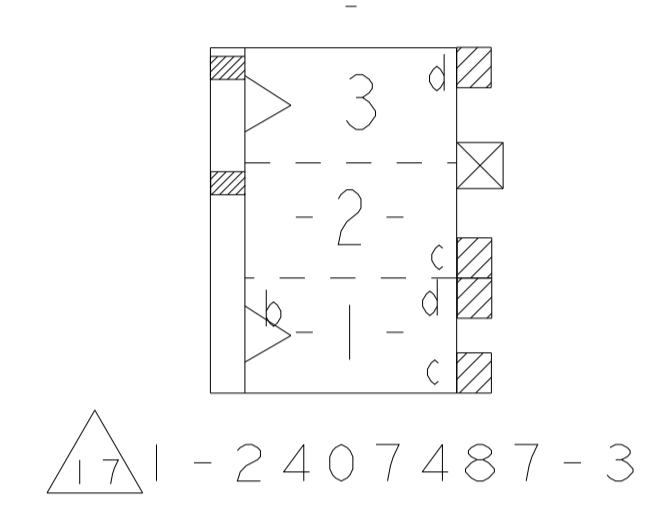
MATERIAL: SEE SHEET 2/2  
FINISH: -  
TOLERANCES UNLESS OTHERWISE SPECIFIED:  
0 PLC ±-  
1 PLC ±0.2 mm  
2 PLC ±-  
3 PLC ±-  
4 PLC ±-  
ANGLES ±°

REVISIONS				
P.	LTN	DESCRIPTION	DATE	APPD
-	-	SEE SHEET 1	-	-

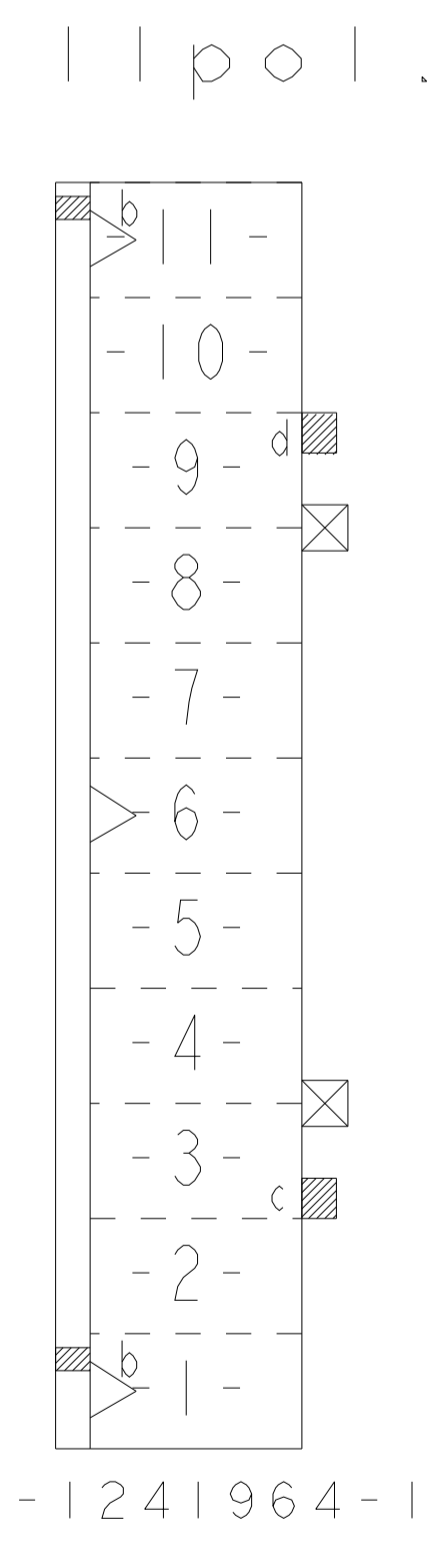
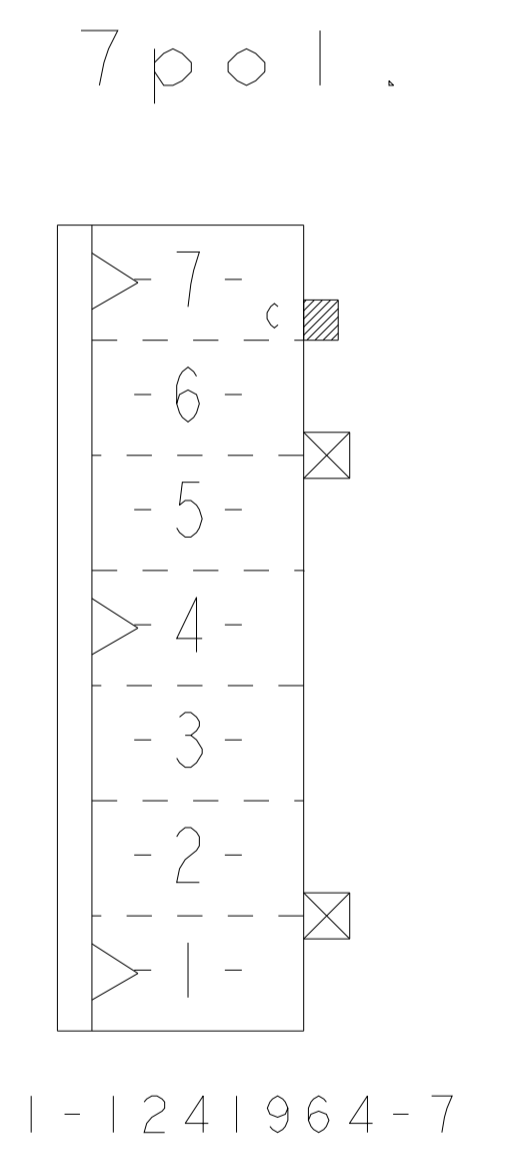
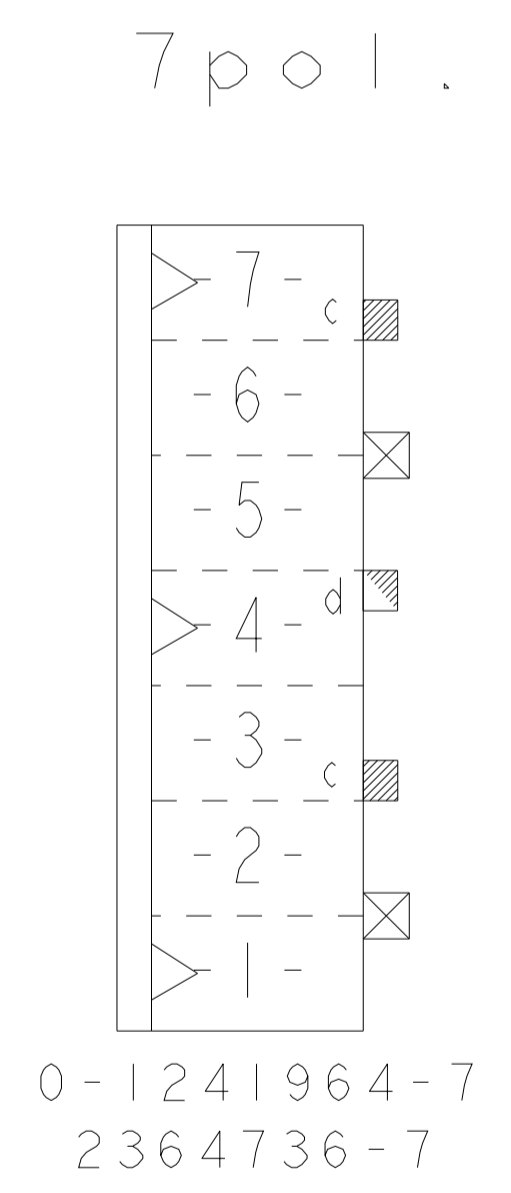


Darstellung:  
Lage der Kodier- und  
Polarisierungsrippen und  
Rastfedern am Gehäuse

DESCRIPTION:  
POSITION OF KEYING RIB AND THE  
LOCKING LATCH AT THE HOUSINGS



TE PART NUMBER (OPTIONAL)



TE PART NO.	POS.	DIM A	DIM B	COLOUR	MATERIAL	MATED WITH
2407487-5	5	25	20	NATURE/natur	PA66 <sup>18</sup> UL94-V0 & GWEPT 750°C n.f.	<sup>15</sup> / <sup>16</sup>
2407487-4	4	20	15	NATURE/natur		<sup>15</sup> / <sup>16</sup>
1-2407487-3	3	15	10	NATURE/natur		<sup>15</sup> / <sup>16</sup>
2407487-3	3	15	10	NATURE/natur		<sup>15</sup> / <sup>16</sup>
2407487-2	2	10	5	NATURE/natur		<sup>15</sup> / <sup>16</sup>
2364736-7	7	35	30	BLUE	PA66 <sup>18</sup> / <sup>19</sup> UL94-V0 & GWEPT 750°C n.f.	<sup>15</sup> / <sup>16</sup>
1-1241964-1	11	55	50	NATURE/natur	PAG UL94V-2	<sup>15</sup> / <sup>16</sup>
1-1241964-7	7	35	30	NATURE/natur		<sup>15</sup> / <sup>16</sup>
0-1241964-7	7	35	30	NATURE/natur		<sup>15</sup> / <sup>16</sup>
0-1241964-6	6	30	25	NATURE/natur		<sup>15</sup> / <sup>16</sup>
1-1241964-5	5	25	20	NATURE/natur		<sup>15</sup> / <sup>16</sup>
0-1241964-5	5	25	20	NATURE/natur		<sup>15</sup> / <sup>16</sup>
0-1241964-4	4	20	15	NATURE/natur		<sup>15</sup> / <sup>16</sup>
0-1241964-3	3	15	10	NATURE/natur		<sup>15</sup> / <sup>16</sup>
2-1241964-2	2	10	5	NATURE/natur		<sup>15</sup> / <sup>16</sup>
0-1241964-3	3	15	10	NATURE/natur		<sup>15</sup> / <sup>16</sup>
2-1241964-2	2	10	5	NATURE/natur		<sup>15</sup> / <sup>16</sup>
Bestell-Nr. / PART NO.	Pol. / POS.	Maß A / DIM A	Maß B / DIM B	Farbe / COLOUR	Materi- / MATERIAL	Gegenstecker / MATED WITH

THIS DRAWING IS A CONTROLLED DOCUMENT.

DWG: Manke, B 28-NOV-02  
CHK: Stredak, F 28-NOV-02  
APPD: Bleicher, M 30-NOV-02

TE Connectivity

2-11 POS. STANDARD-TIMER HOUSING WITH INTERIOR LOCKING. PITCH 5mm

SCALE 1:1 SHEET 2 OF 2 REV. A22