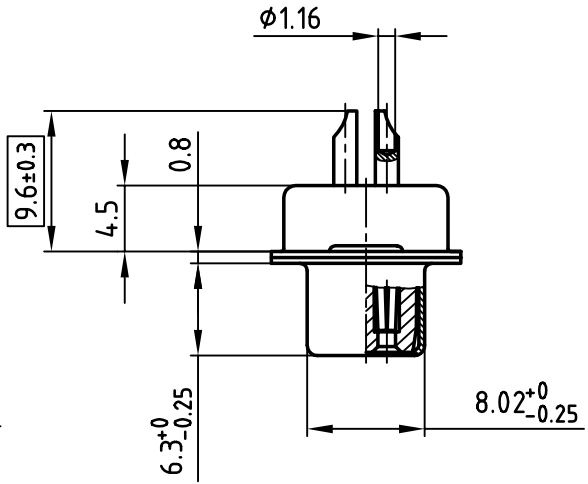
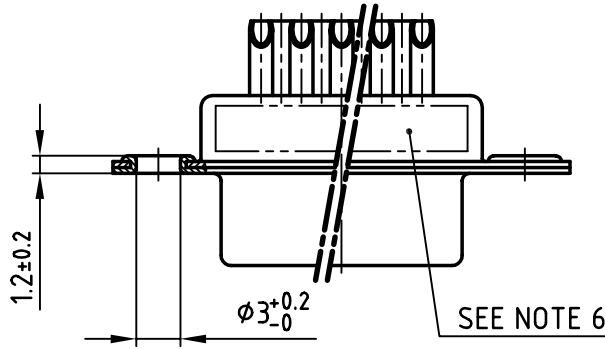
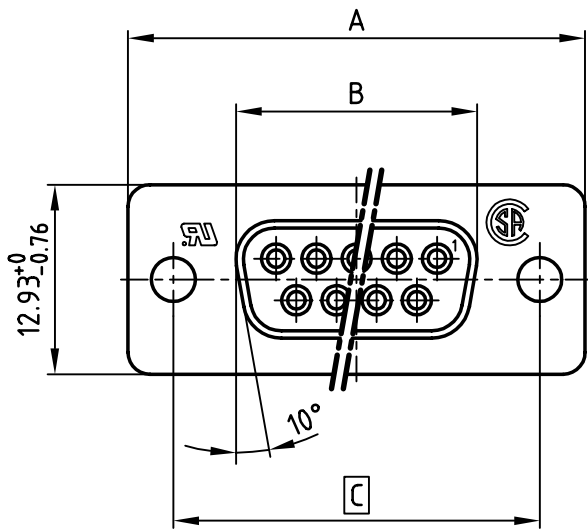


used for: D-SUB FILTER

POS.	A ^{-0.76}	B ^{-0.25}	C	Part NO.
9	31.19	16.46	25.00 ^{+0.12} / _{-0.13}	242A26820X
15	39.52	24.79	33.30 ^{+0.15} / _{-0.1}	242A26830X
25	53.42	38.50	47.04 ± 0.13	242A26840X
37	69.70	54.96	63.50 ± 0.13	242A26850X



NOTES:

- 1. METALSHELLS: STEEL; min. 320µ" TIN
- 2. INSULATORS: PBT GF UL 94 V-0, BLACK
- 3. CONTACTS: COPPER ALLOY
SOLDER CUP ACCEPTS CABLE AWG 20
PLATING: min. 8µ" HARD GOLD OVER min. 50µ" NICKEL
- 4. CAPACITANCE: 830pF ±20%
- 5. DIELECTRIC WITHSTANDING VOLTAGE: 424 VDC
- 6. CONNECTOR IS PART MARKED: PART-NO. CONEC Y/WW
- 7. = CRITICAL DIMENSION

APPROVAL # FREIGABE # DEBLOCAGE # AUTORIZACION	
CUSTOMER APPROVAL DATE:	
NAME:	TITLE:
COMPANY NAME:	
APPROVAL # FREIGABE # DEBLOCAGE # AUTORIZACION	

THIS DRAWING MAY NOT BE COPIED OR REPRODUCED IN ANY WAY, AND MAY NOT BE PASSED ON TO A THIRD PARTY WITHOUT WRITTEN PERMISSION.
 OWNERSHIP AND COPYRIGHT OF CONEC GmbH
 DO NOT ALTER CAD DRAWING BY HAND

rev.	description	date	name

tolerance			scale: 2:1
material:			SEE NOTES
2002	date	name	D-SUB FILTER FEMALE 9-37pos. SOLDER CUP
drawn	18.06.	Parei	
appd.	18.06.	E. Mickenbecker	
norm	DIN 41652		
d-old			



dwg no:		AutoCAD 2000	DIN-A
24K1A270		4	
part no:		SEE TABLE	
		sh: 1/1	