

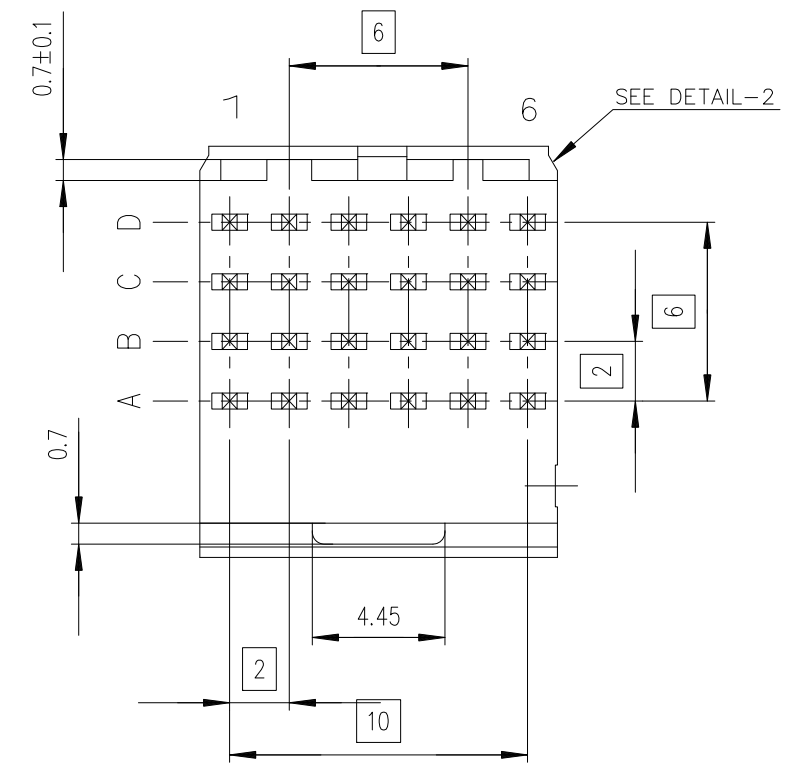
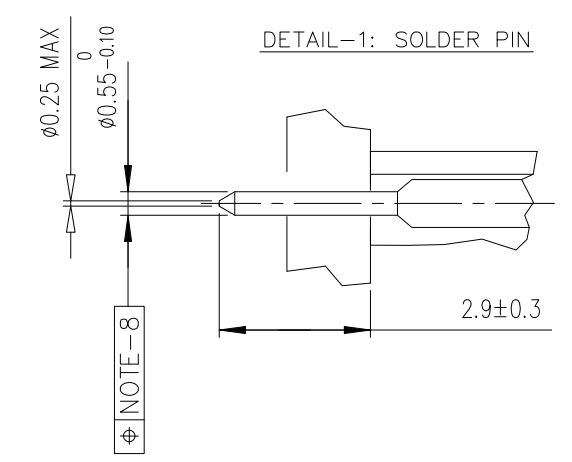
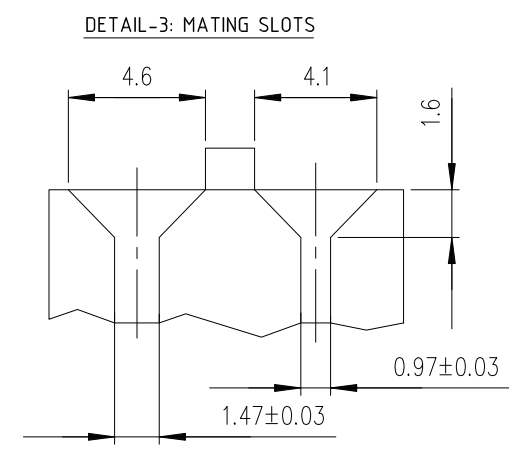
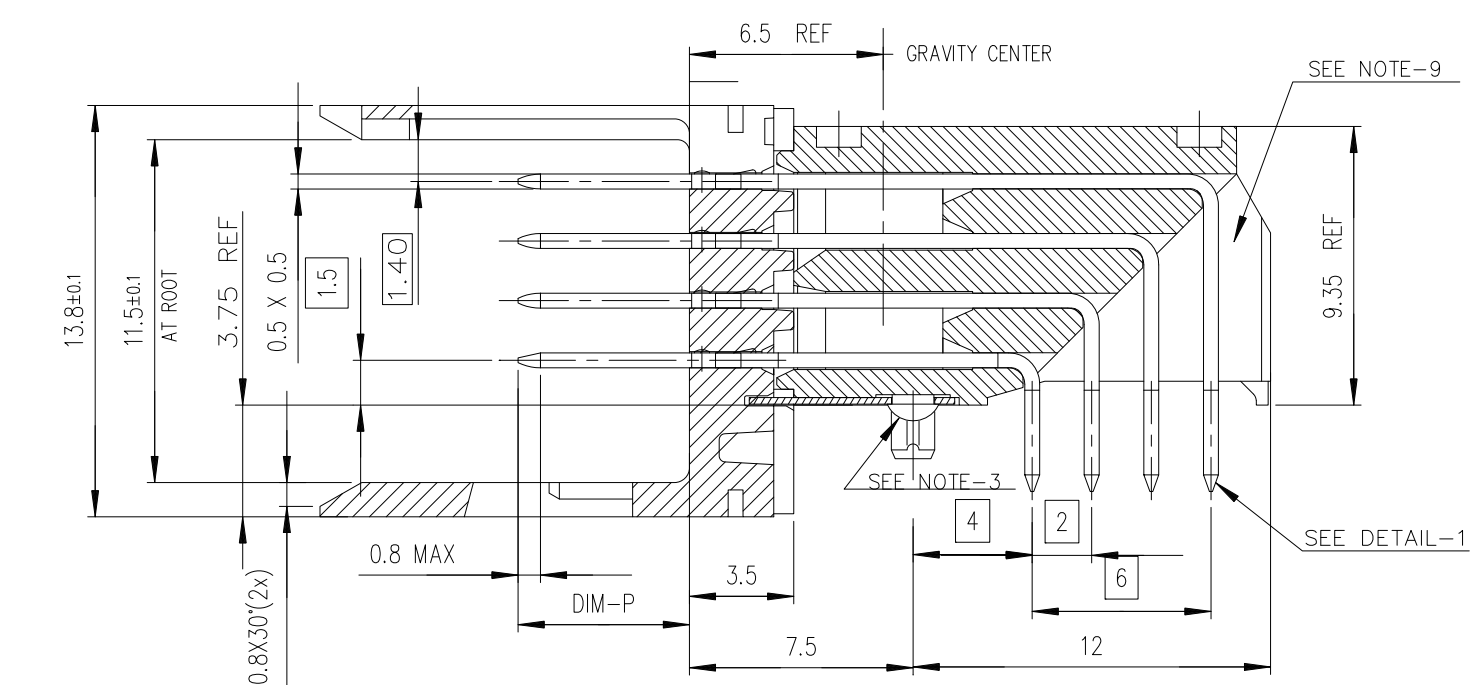
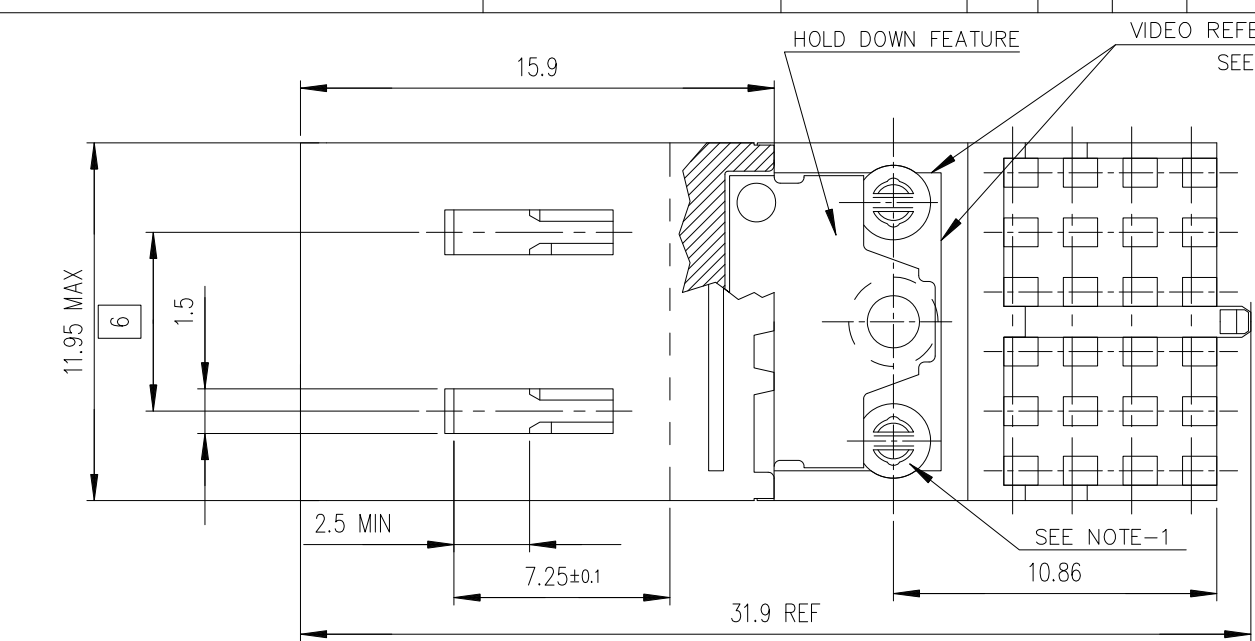
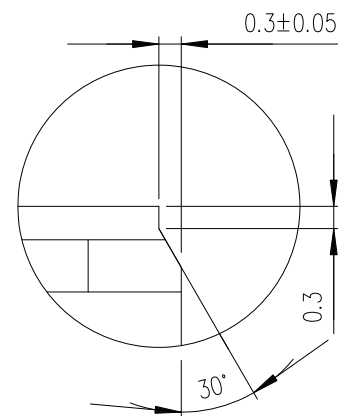
GENERAL CHARACTERISTICS AND ROHS INFORMATIONS:

SEE PRODUCT SPECIFICATION: GS-12-446

NOTE

1. SPRING PEGS WITH LOW INSERTION FORCE MAX 20 N PER MODULE
RETENTION FORCE MIN 10 N PER MODULE
2. ONE HEAT STAKE PEG FOR HDF FIXING
3. USE EXISTING CABLE TO BOARD CODING KEYS
4. FOR PLATING PERFORMANCE REFER DRAWING # 10159408
5. THIS PRODUCT MEETS EUROPEAN UNION DIRECTIVES AND OTHER
COUNTRY REGULATIONS AS DESCRIBED IN GS-47-0004
6. TRUE POS CONTROL WITH GRID GAUGE $\phi 0.65 +$ WEIGHT 10 N
TRUE POS TOLERANCES ACCORDING TO MOUNTING RANGE = ± 0.35 (X AND Y)
7. CENTRAL WALL WITH END REAR SUPPORT
8. VIDEO REFERENCING ON LISIBLE+ACCURATE SHARP PLASTIC EDGES
9. ALL PRODUCTS WITH PART NUMBERS SHOWN IN SUBSEQUENT TABLES
WILL BE PACKAGED IN TAPE&REEL. IF TUBE PACKAGING IS REQUIRED,
A SUFFIX "T" WILL BE ADDED TO THE END OF THE PART NUMBER.
EXAMPLE:XXXX-XXXT OR XXXX-XXXTLF
10. A Δ SYMBOL WILL BE NEXT TO ANY DIMENSION, VIEW, OR NOTE
WHICH HAS BEEN MODIFIED WITH THE CURRENT DRAWING REVISION.
11. MATERIAL : BODY : LCP UL94-V0
: CONTACT : COPPER ALLOY.

DETAIL-2: PIP CHAMFER SCALE 10/1

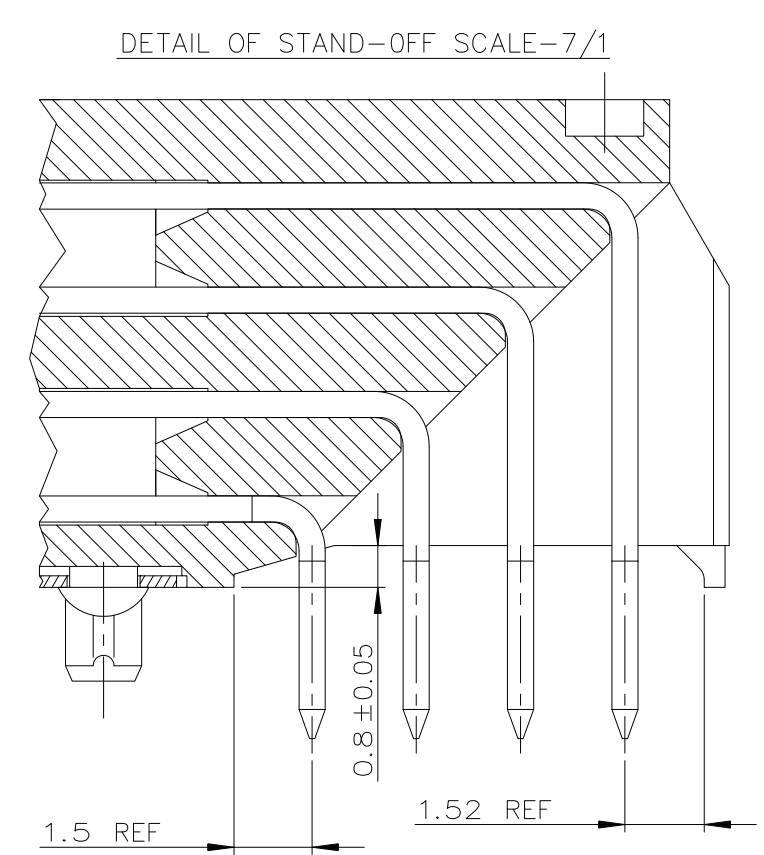
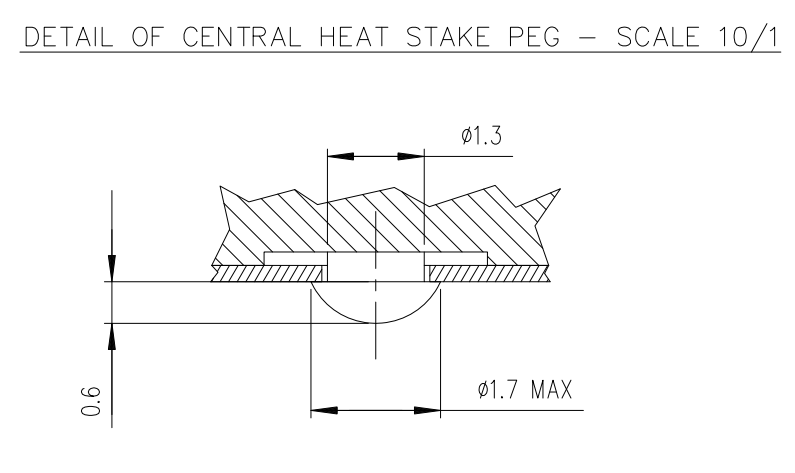
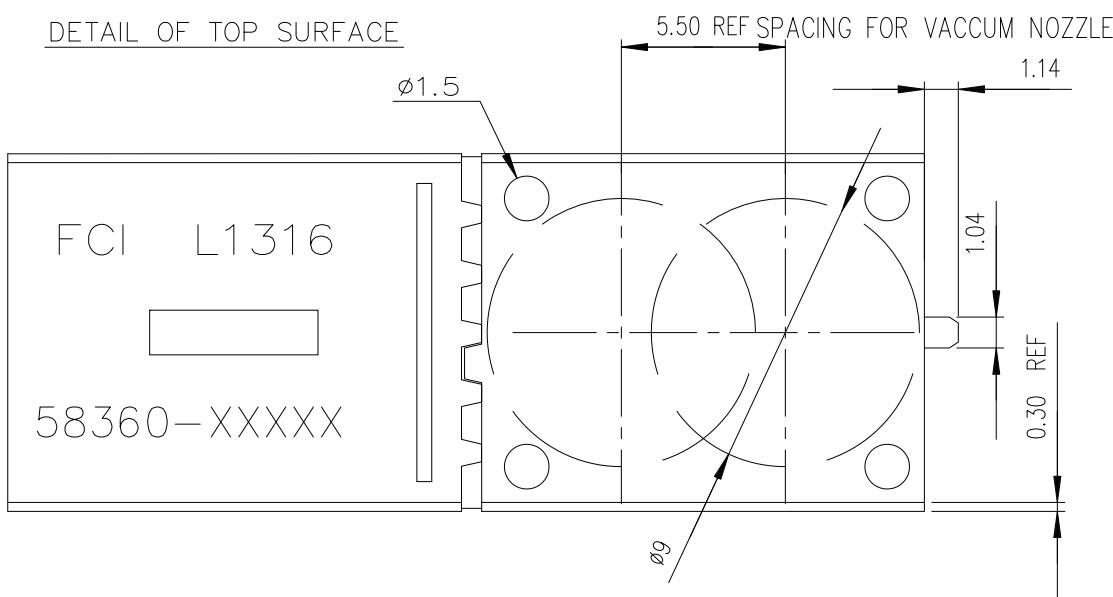


X-PLATING CODE Δ
REF.DWG. 10159408

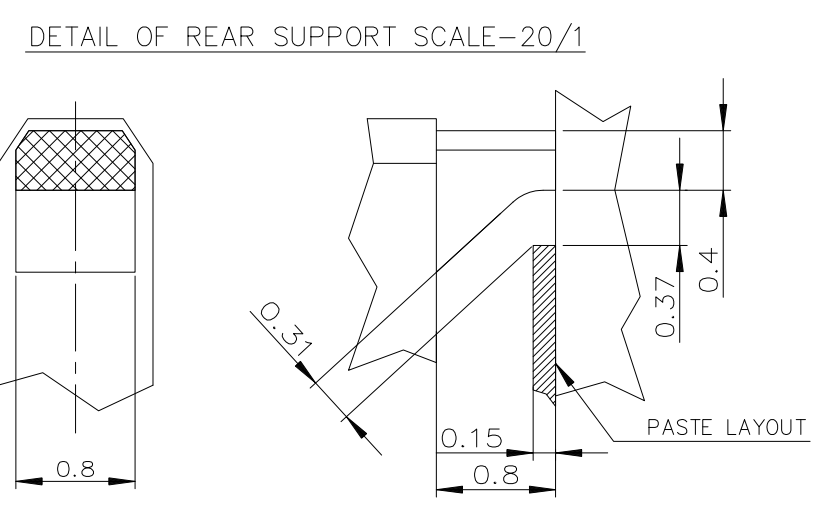
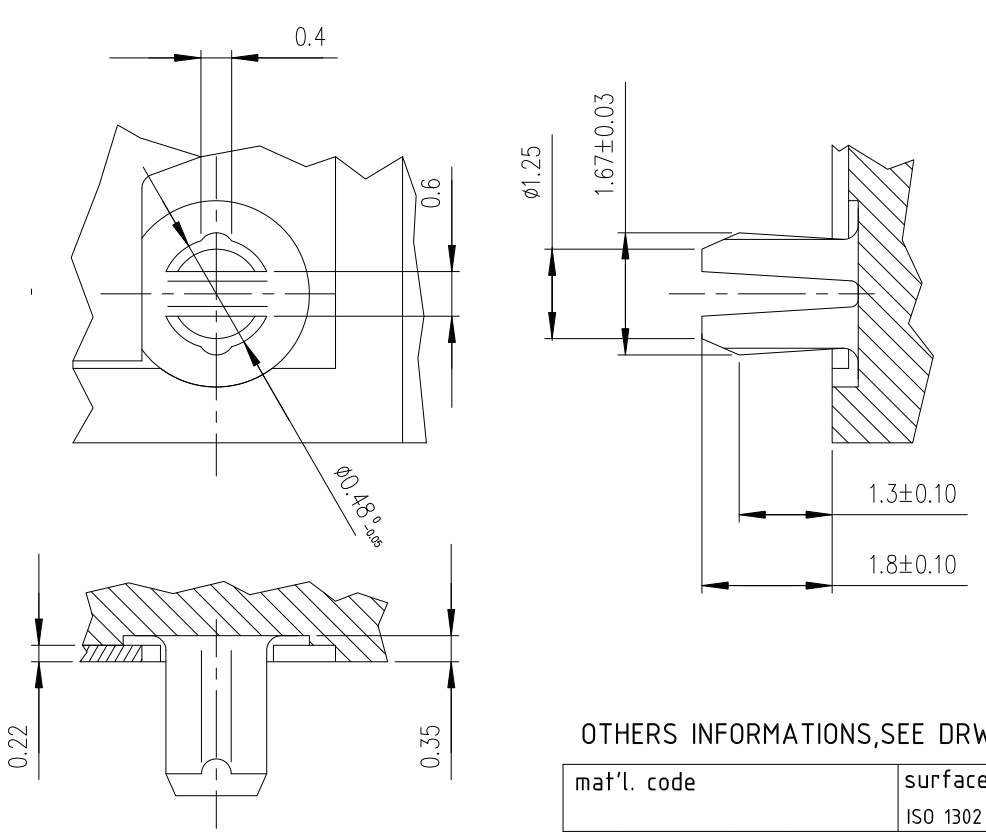
PART NUMBER :58360-X0XLF

OTHERS INFORMATIONS,SEE DRW 58360 SHEET 2/3/4

mat'l. code		surface ISO 1302 ✓		tolerance ISO 406 ISO 1101		projection 		product family METRAL	
ltr		ecn no	dr	date		tolerances unless otherwise specified		title	
G	DG10-0121	CENH		2010-03-15		.0±0.3		METRAL RA HDR PIP CONVERG	
H	DG10-0147	CENH		2010-04-30		.00±0.13		NB 4x6 - WITH HDF	
J	DG-011526-1	QinDF		2012-04-26		.000±0.05		dwg no	
K	ELX-I-38655	MINI		2020-10-03		dr		sheet 1 of 4	
sheet index		revision	K			enr		size	
1		sheet	1			chr		A3	
						appd		type	
						SANUJ		Product Customer Drawing	



DETAIL OF RETENTION PEGS (2x) SCALE 10/1



SPECIFIC DATAS: CONTACT LOADING SEE TABLE-1 & 2

TABLE-2

PART NUMBER	ROW	CONTACT CODE CONFIGURATION					
		1	2	3	4	5	6
58360-X01LF	D	02	02	02	02	02	02
	C	02	02	02	02	02	02
	B	02	02	02	02	02	02
	A	02	02	02	02	02	02

PART NUMBER	ROW	CONTACT CODE CONFIGURATION					
		1	2	3	4	5	6
58360-X02LF	D	02	02	02	02	02	02
	C	02	02	02	02	02	02
	B	—	—	—	—	—	—
	A	02	02	02	02	02	02

PART NUMBER	ROW	CONTACT CODE CONFIGURATION					
		1	2	3	4	5	6
58360-X03LF	D	01	01	01	01	01	01
	C	03	03	03	03	03	03
	B	03	03	03	03	03	03
	A	03	03	03	03	03	03

CONTACT CODE	
	DIM-P
01	5.00
02	5.75
03	6.50
-	NO CONTACT

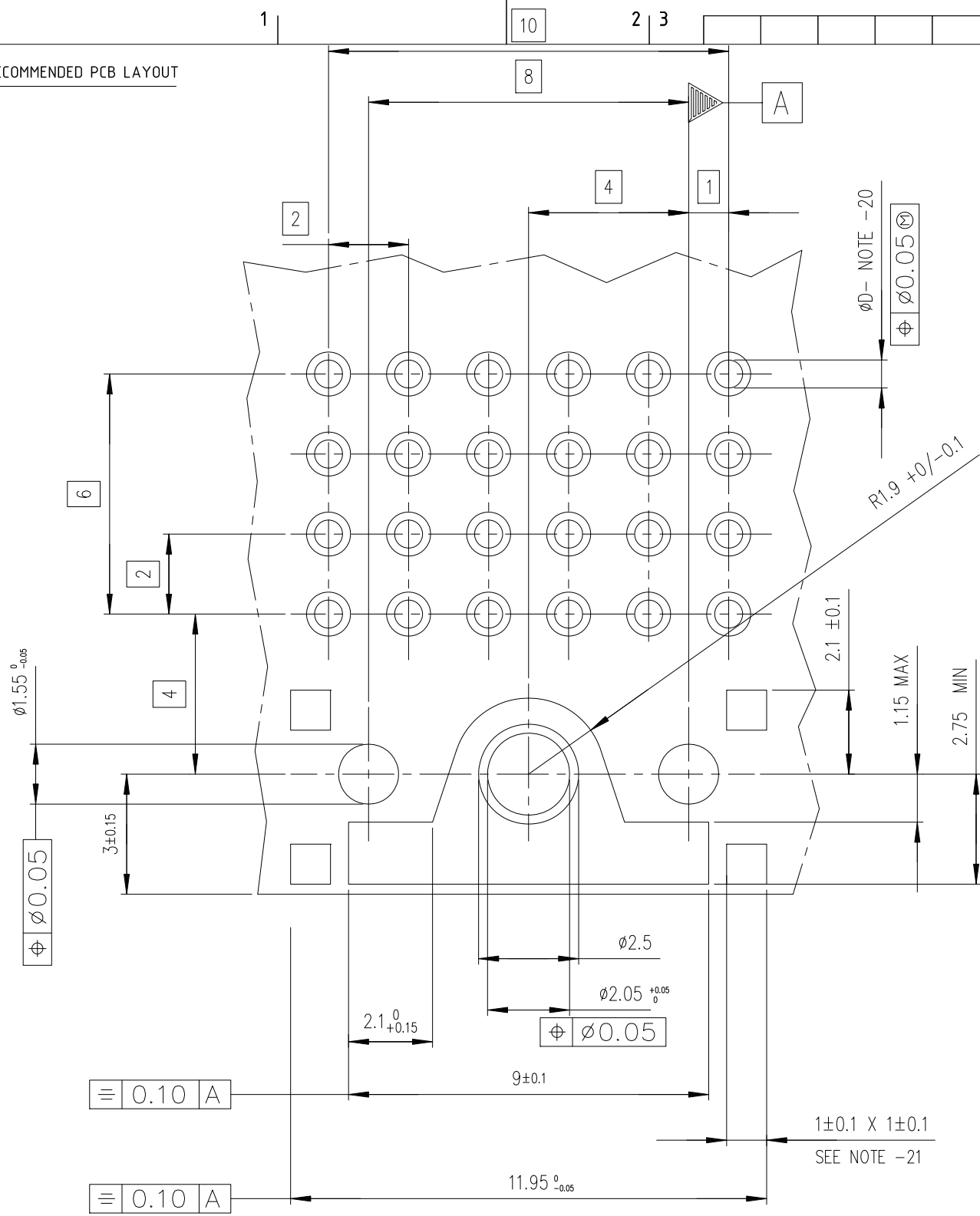
OTHERS INFORMATIONS, SEE DRW 58360 SHEET 1/3/4

mat'l. code				surface ISO 1302 ✓		tolerance ISO 406 ISO 1101		projection MM		product family METRAL			
ltr				ecn no		dr		date		title METRAL RA HDR PIP CONVERG NB 4x6 - WITH HDF			
G				DG10-0121		CENH		2010-03-15		dwg no sheet 2 of 4 size 58360 A3 type Product Customer Drawing			
H				DG10-0147		CENH		2010-04-30					
J				DG-011526-1		QinDF		2012-04-26					
K				ELX-I-38655		MINI		2020-10-03					
				dr		CHAMPION		2002-12-17					
				enr		ALEX BABU		2020-10-03					
				chr		ARUN		2020-10-03					
				appd		SANUJ		2020-10-03					
sheet index		revision sheet		K		2							

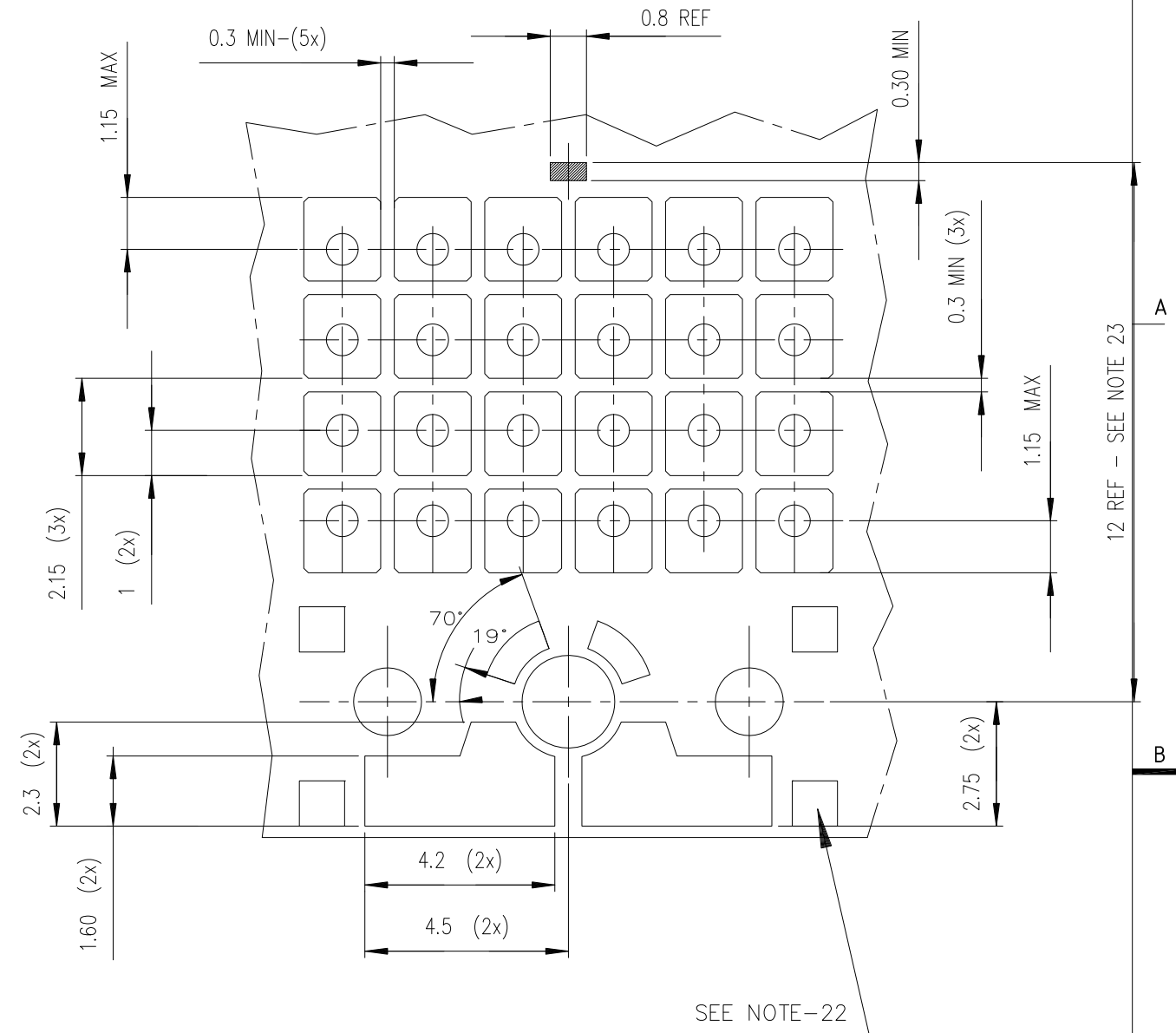
Amphenol FCI

© 2016 AFCl

RECOMMENDED PCB LAYOUT



RECOMMENDED STENCIL LAYOUT



NOTE

- 20. PTH DIMENSIONS - ØD
- REFER DRAWING NO: # 58361
- 21. 4 SQUARE REFERENCE PADS
- 22. NO PASTE ALLOWED ON 4 REFERENCE PADS
- 23. PRODUCT REAR SUPPORT LOCATION
- 24. RECOMMENDED PASTE THICKNESS = 0.15

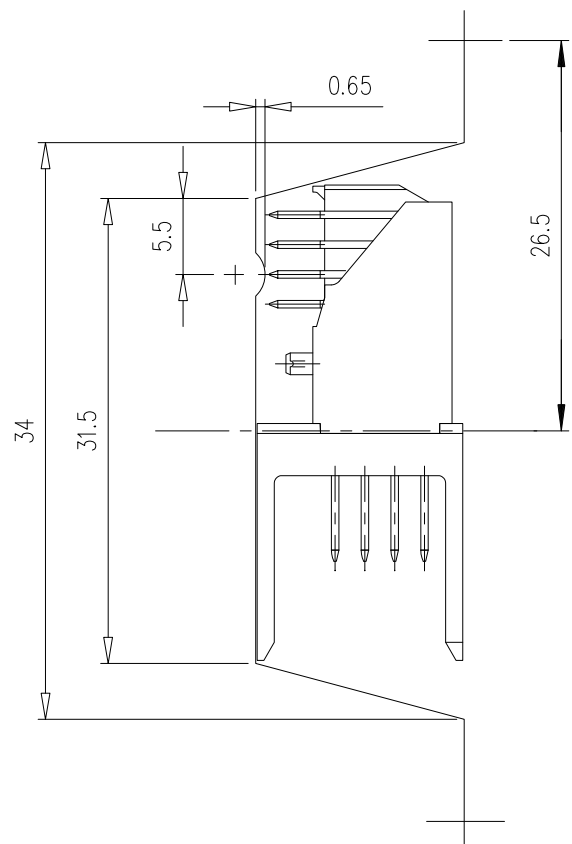
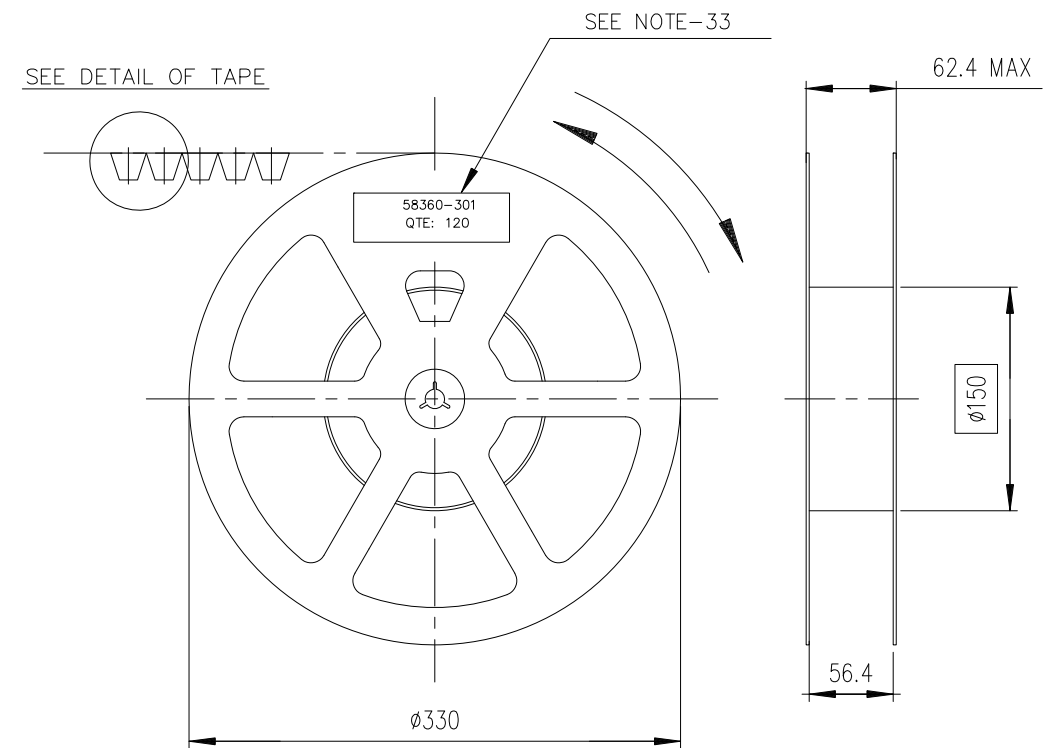
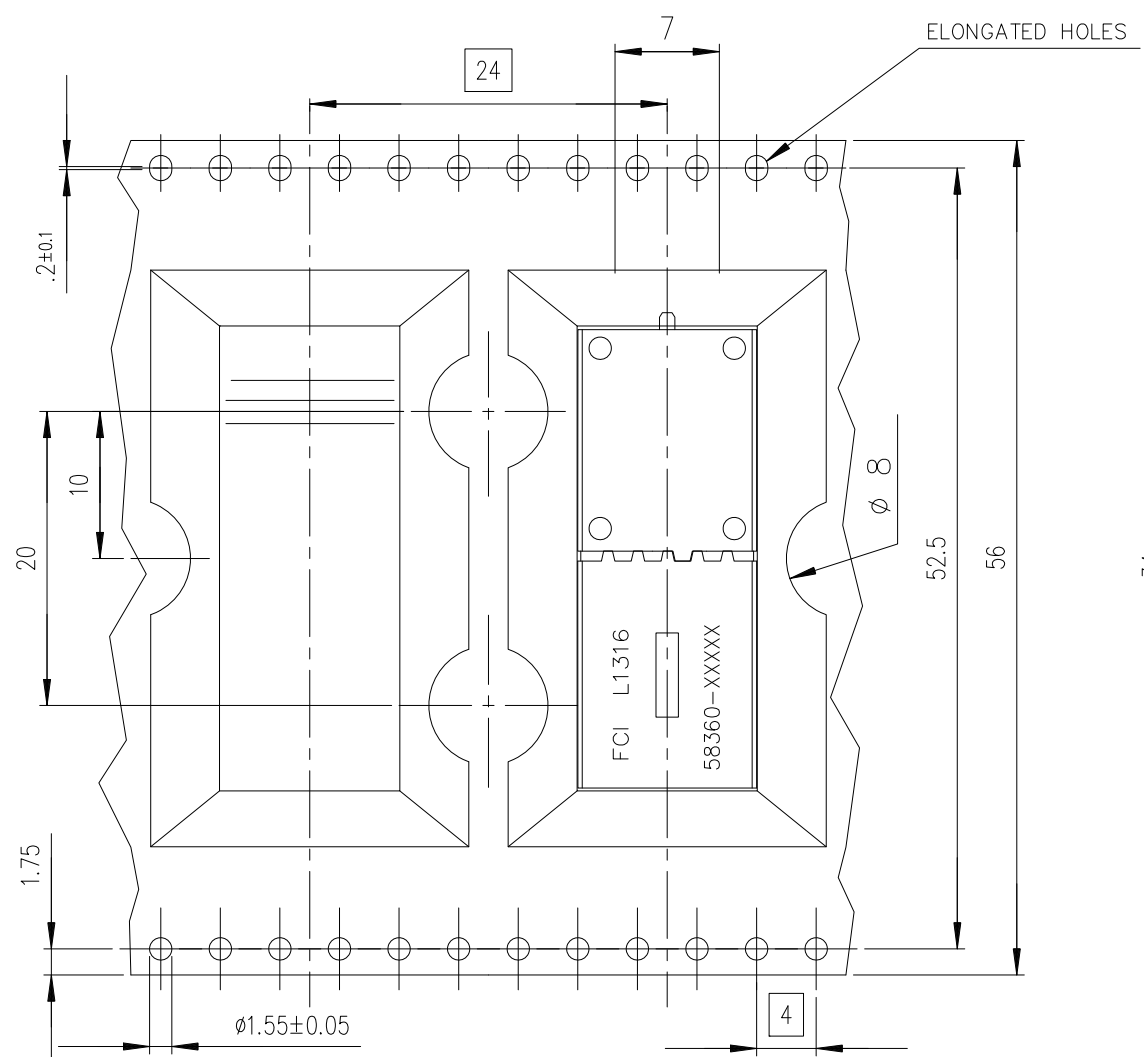
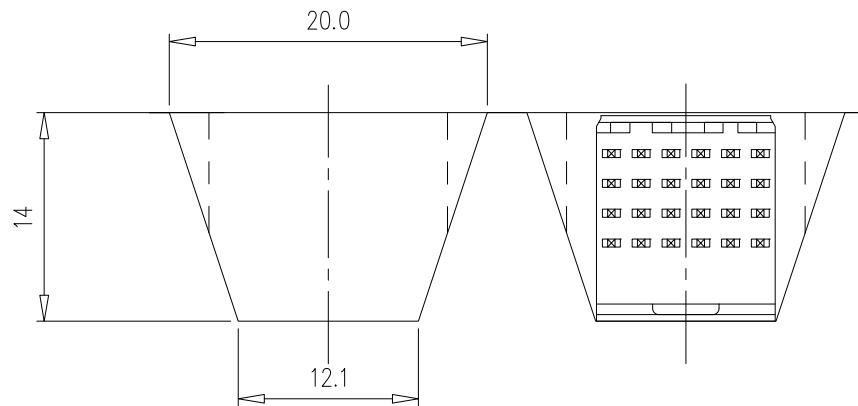
OTHERS INFORMATIONS,SEE DRW 58360 SHEET 1/2/4

mat'l. code		surface ISO 1302		tolerance ISO 406 ISO 1101		projection		product family METRAL	
ltr		ecn no	dr	date		tolerances unless otherwise specified		title	
G	DG10-0121	CENH	2010-03-15			.0±0.3		METRAL RA HDR PIP CONVERG	
H	DG10-0147	CENH	2010-04-30			.00±0.13		NB 4x6 - WITH HDF	
J	DG-011526-1	QinDF	2012-04-26			.000±0.05		scale -	
K	ELX-I-38655	MINI	2020-10-03	dr	CHAMPION	2020-12-17	Amphenol FCi		dwg no
				enr	ALEX BABU	2020-10-03			sheet 3 of 4
				chr	ARUN	2020-10-03			size
				appd	SANOJ	2020-10-03			A3
sheet index		revision sheet	K					type	
			3					Product Customer Drawing	

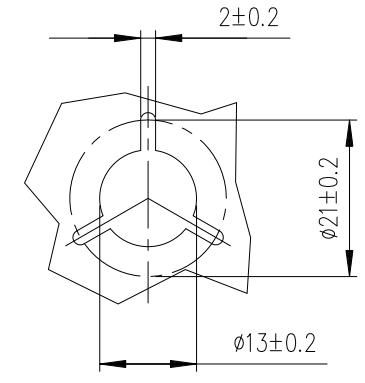
DETAIL OF TAPE SCALE 2/1

PACKAGING SPECIFICATION

DETAIL OF REEL SCALE 1/5



DETAIL OF REEL HUB SCALE 1/1



Amphenol FCI

© 2016 AFCl

- NOTE-30: REF SPECIFICATION: EIA-481-B
- NOTE-31: TAPE MATERIAL: PVC ANTISTATIC
SURFACE RESISTIVITY MAX 10¹² OHMS/SQUARE AFTER HEAT FORMING
CARRIER P/N: 10097632-002 COVER TAPE P/N:10097632-003
- NOTE-32: PACKAGING QTY: PACKAGING MATERIAL DETAIL INFORMATION PLEASE REFER TO DRAWING OF 10097632
- QTY PER REEL(P/N:10097632-001) = 120 PCS
- QTY PER BOX (P/N:10097632-004) = 6 REELS = 720 PCS
- NOTE-33: LABEL FOR IDENTIFICATION: PART NUMBER,DATE-CODE,TRACABILITY INFORMATIONS
- NOTE-34: RECYCLABLE MATERIAL FOR REEL + ANTISTATIC TREATMENT
- NOTE-35: TUBE PACKAGING: 48PCS CONNECTOR PER TUBE AND 384 PCS CONNECTOR PER CARTON

OTHERS INFORMATIONS,SEE DRW 58360 SHEET 1/2/3

mat'l. code				surface ISO 1302		tolerance ISO 406 ISO 1101		projection MM		product family METRAL									
ltr				ecn no		dr		date		title									
G				DG10-0121		CENH		2010-03-15		METRAL RA HDR PIP CONVERG NB 4x6 - WITH HDF									
H				DG10-0147		CENH		2010-04-30											
J				DG-011526-1		QinDF		2012-04-26											
K				ELX-I-38655		MINI		2020-10-03		dr		CHAMPION 2002-12-17		dwg no		sheet 4 of 4		size	
										enr		ALEX BABU 2020-10-03		Amphenol FCI		58360		A3	
										chr		ARUN 2020-10-03							
										appd		SANJO 2020-10-03							
sheet index		revision sheet		K		4													