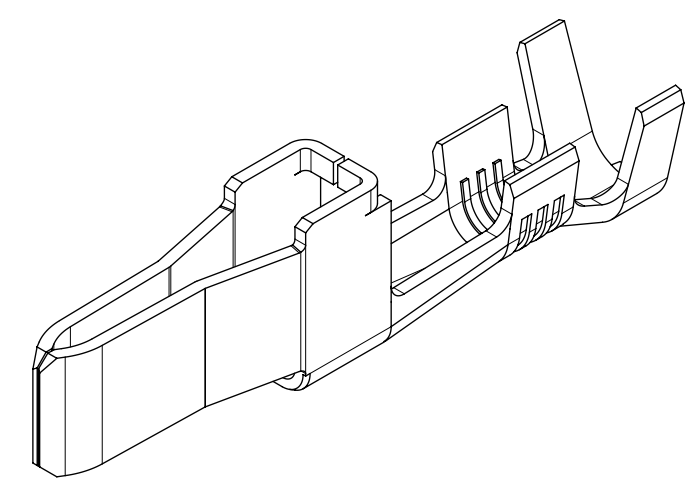
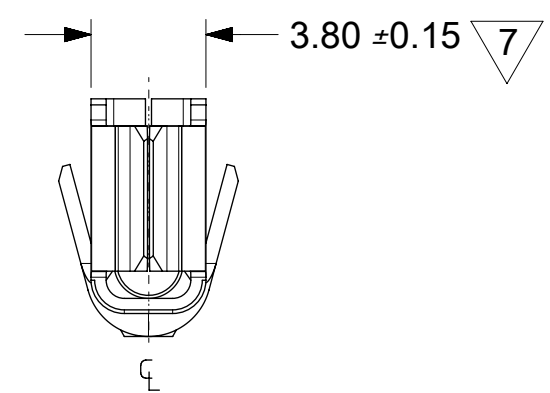
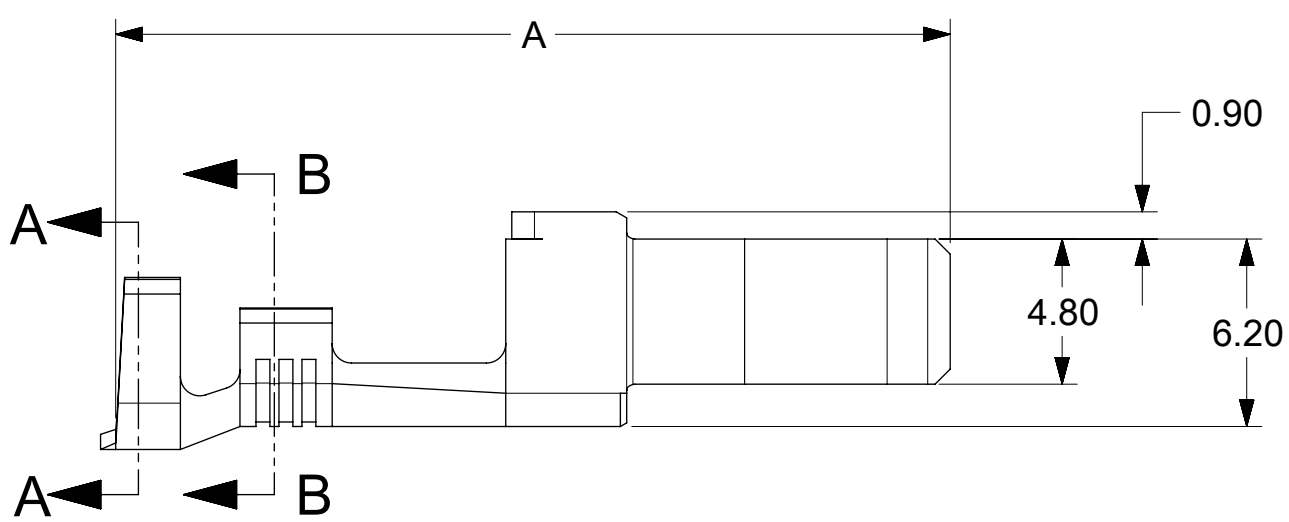
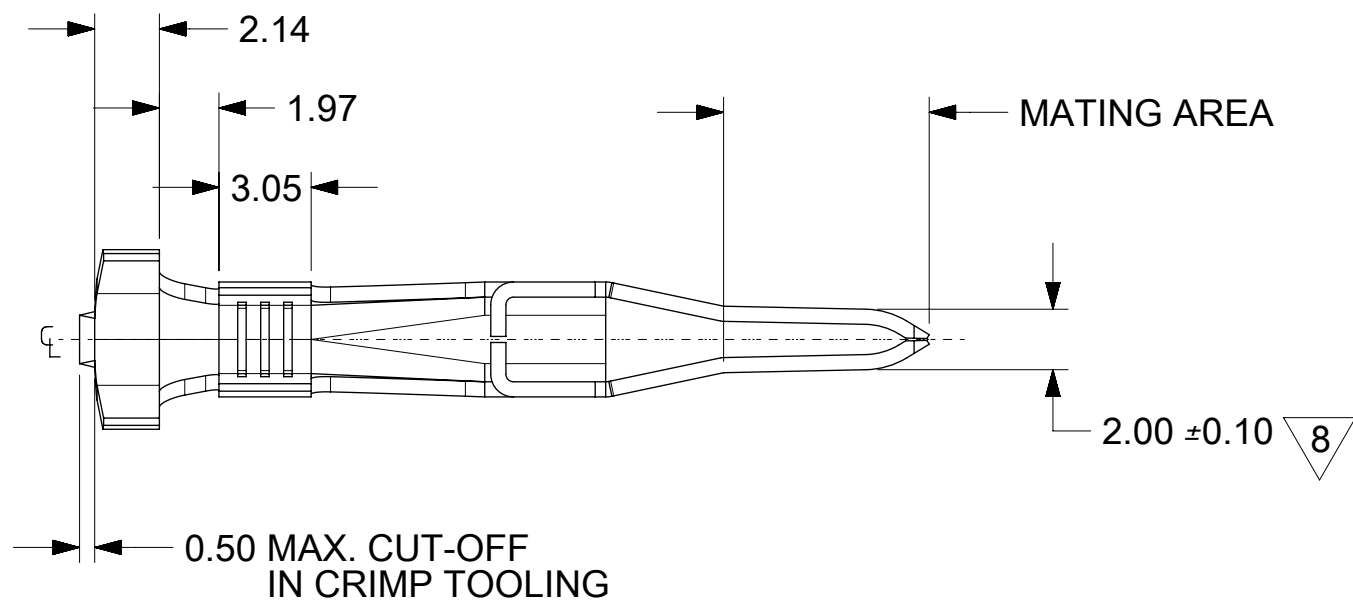
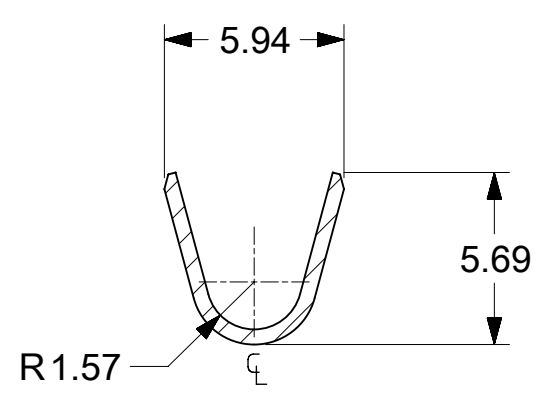


NOTES:

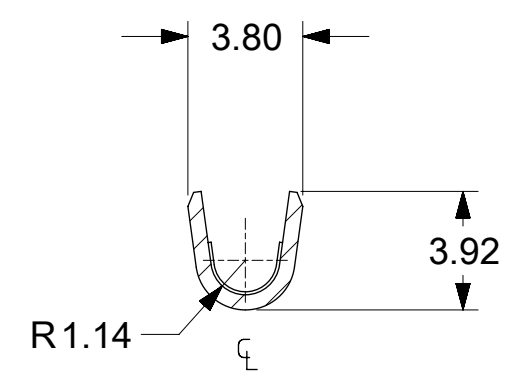
1. MATERIAL: COPPER ALLOY 151, 0.50mm THICK.
2. PLATING:
 SELECT GOLD: 0.00076 MIN. SELECT. GOLD IN CONTACT AREA, 0.00254 MIN. SELECT *TIN IN CRIMP AREA, OVER 0.00127 NICKEL.
 SELECT SILVER: 0.00254 MIN. SELECT. SILVER IN CONTACT AREA, 0.00254 MIN. SELECT *TIN IN CRIMP AREA, OVER 0.00127 NICKEL.
 OVERALL TIN: 0.00254 MIN. BRIGHT *TIN OVER 0.00127 MIN. NICKEL
3. PRODUCT SPECIFICATION: PS-42815-001.
4. PACKAGING INFORMATION: PK-42815-001.
5. PART IS DESIGN IN METRIC.
6. TERMINALS FOR USE WITH STRANDED WIRE ONLY, STRANDED TINNED WIRE IS RECOMMENDED.
7. AFTER CRIMPING, THIS DIMENSION = 3.55mm MIN.
8. AFTER CRIMPING, THIS DIMENSION = 2.25mm MAX.
9. CRIMP SPECIFICATION: 638301000.
10. WHEN USING TIN-PLATED TERMINALS FOR APPLICATIONS INVOLVING VIBRATION AND/OR THERMAL CYCLING, MOLEX STRONGLY RECOMMENDS THE USE OF NYE LUBRICANT, NYOGEL 760G, ON THE MATING AREA OF THE TERMINAL. LUBRICANT SHOULD BE APPLIED AFTER THE TERMINALS ARE INSERTED INTO THE HOUSING.
11. PARTS CONFORM TO CLASS 'B' REQUIREMENT OF COSMETIC SPEC PS-45499-002
12. REFER AS-42815-001 FOR TIN PLATED TERMINALS RECOMMENDED LUBRICATION PROCEDURE.



ISOMETRIC VIEW



SECTION A-A
INSULATOR CRIMP



SECTION B-B
CONDUCTOR CRIMP

MATERIAL NO.	CONFIGURATION	DIM. "A"	PLATING	STATUS
428170041	STANDARD	27.60	TIN	PLANNED FOR OBSOLESCENCE
428170141	MAKE-FIRST/BREAK-LAST	29.60	TIN	
428170042	STANDARD	27.60	SELECT GOLD	ACTIVE
428170142	MAKE-FIRST/BREAK-LAST	29.60	SELECT GOLD	ACTIVE
428171044	STANDARD	27.60	SELECT SILVER	ACTIVE
428171144	MAKE-FIRST/BREAK-LAST	29.60	SELECT SILVER	ACTIVE

THIS DRAWING CONTAINS INFORMATION THAT IS PROPRIETARY TO MOLEX ELECTRONIC TECHNOLOGIES, LLC AND SHOULD NOT BE USED WITHOUT WRITTEN PERMISSION

DIMENSION UNITS MM	SCALE 4:1	CURRENT REV/DESC: MIGRATED TO ECTR		molex
GENERAL TOLERANCES (UNLESS SPECIFIED)		EC NO: 171562		
4 PLACES ±	±	DRWN: RLALSANGI	2017/07/19	
3 PLACES ±	±	CHK'D: ISHWARG	2018/05/04	
2 PLACES ±	0.25 ±	APPR: ISHWARG	2018/05/04	PRODUCT CUSTOMER DRAWING
1 PLACE ±	0.4 ±	INITIAL REVISION:		
0 PLACES ±	±	DRWN: MFIRLEJ	2002/05/15	DOCUMENT NUMBER
ANGULAR TOL ±	0.5 °	APPR: JCOMERCI	2002/05/15	SD-42817-020
DRAFT WHERE APPLICABLE MUST REMAIN WITHIN DIMENSIONS	THIRD ANGLE PROJECTION	DRAWING	SERIES	MATERIAL NUMBER
		C-SIZE	42817	SEE CHART
				CUSTOMER
				GENERAL MARKET
				SHEET NUMBER
				1 OF 1