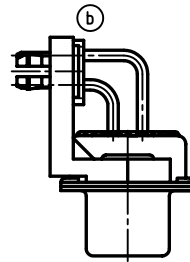
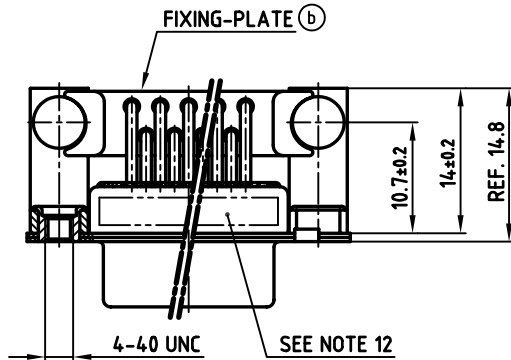
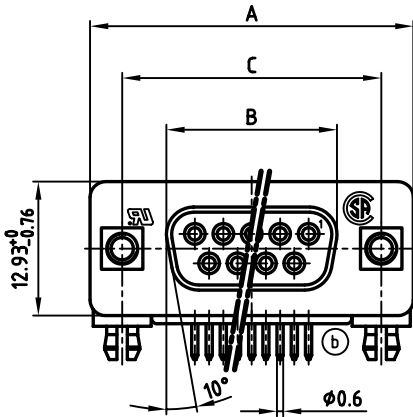
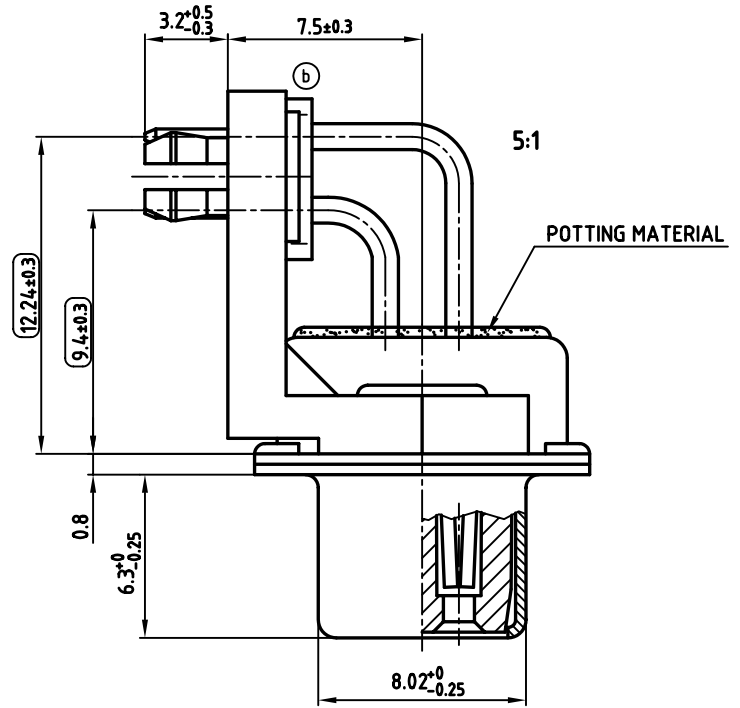


No. of pos.	A ^{-0.76}	B ^{-0.25}	C	Part No.
9	31.19	16.46	25.00 ^{+0.12} _{-0.15}	248C21530X
15	39.52	24.79	33.30 ^{+0.15} _{-0.1}	248C21540X
25	53.42	38.50	47.04 ±0.13	248C21550X
37	69.70	54.96	63.50 ±0.13	248C21560X

used for: D-SUB Filter



NOTES:

- METALSHELLS: STEEL; min. 320µ" TIN
- INSULATORS: PBT GF UL 94 V-0, BLACK
- CONTACTS: COPPER ALLOY
PLATING: 30µ" HARD GOLD OVER min. 50µ" NICKEL
- METAL BRACKET: STEEL; min. 320µ" TIN over 80µ" NICKEL
- THREADED INSERT: COPPER ALLOY; min. 200µ" TIN over 80µ" NICKEL
- PCB-SNAP: COPPER ALLOY; min. 200µ" TIN over 80µ" NICKEL
PCB-HOLE: Ø3.1±0.1; PCB THICKNESS 1.6mm
- (b) FIXING-PLATE: PBT GF UL 94 V-0, BLACK
- CAPACITANCE: 1300pF ±20%
- DIELECTRIC WITHSTANDING VOLTAGE: 1500VDC
- P.C.B. HOLE DRILLINGS ON DRAWING NO.: 16K1111UA
- MAXIMUM TORQUE VALUE FOR THREAD: 6" LBS
- CONNECTOR IS PART MARKED: PART-NO. CONEC ABC
- () = CHECK DIMENSION



APPROVAL # FREIGABE # DEBLOCAGE # AUTORIZACION # APPROVAL

CUSTOMER APPROVAL DATE:

NAME: TITLE:

COMPANY NAME:

APPROVAL # FREIGABE # DEBLOCAGE # AUTORIZACION # APPROVAL

THIS DRAWING MAY NOT BE COPIED OR REPRODUCED IN ANY WAY, AND MAY NOT BE PASSED ON TO A THIRD PARTY WITHOUT WRITTEN PERMISSION. OWNERSHIP AND COPYRIGHT OF CONEC GmbH DO NOT ALTER CAD DRAWING BY HAND

tolerance		dim. in mm	
2000	date	name	
drawn	21.11.	Parei	
appd.	21.11.	Mickenbecker	
norm	DIN 41652		
d-old			
S x b	Ä 2355	17.10.2005	Lehmen
rev.	description	date	name

scale: 2:1

material: SEE NOTES

title: **D-SUB Filter Female 90°**
9 - 37 pos. Solder pin angled 370°
metal bracket, threaded insert, fixing-plate, clip

dwg no: AutoCAD 2000 DIN-A

24K1A073A

part no: SEE TABLE

3 sh: 1/1