

## 1A, 20V - 150V Schottky Barrier Surface Mount Rectifier

### FEATURES

- Ideal for automated placement
- Compact package size, profile <0.85mm
- High surge current capability
- Low power loss, high efficiency
- Moisture sensitivity level: level 1, per J-STD-020
- RoHS Compliant
- Halogen-free according to IEC 61249-2-21

### APPLICATIONS

- Switching mode power supply (SMPS)
- Adapters
- DC to DC converter

### MECHANICAL DATA

- Case: SOD-123HE
- Molding compound meets UL 94V-0 flammability rating
- Terminal: Matte tin plated leads, solderable per J-STD-002
- Meet JESD 201 class 2 whisker test
- Polarity: Indicated by cathode band
- Weight: 0.021g (approximately)

KEY PARAMETERS		
PARAMETER	VALUE	UNIT
$I_F$	1	A
$V_{RRM}$	20 - 150	V
$I_{FSM}$	30	A
$T_{J\ MAX}$	125, 150	°C
Package	SOD-123HE	
Configuration	Single die	


**SOD-123HE**


ABSOLUTE MAXIMUM RATINGS ( $T_A = 25^\circ\text{C}$ unless otherwise noted)								
PARAMETER	SYMBOL	SS12 LS	SS13 LS	SS14 LS	SS16 LS	SS110 LS	SS115 LS	UNIT
Marking code on the device		12LS	13LS	14LS	16LS	10LS	A5LS	
Repetitive peak reverse voltage	$V_{RRM}$	20	30	40	60	100	150	V
Reverse voltage, total rms value	$V_{R(RMS)}$	14	21	28	42	70	105	V
Forward current	$I_F$	1						A
Peak forward surge current, 8.3ms single half sine-wave superimposed on rated load	$I_{FSM}$	30						A
Junction temperature	$T_J$	- 55 to +125		- 55 to +150			°C	
Storage temperature	$T_{STG}$	- 55 to +150						°C

<b>THERMAL PERFORMANCE</b>			
<b>PARAMETER</b>	<b>SYMBOL</b>	<b>TYP</b>	<b>UNIT</b>
Junction-to-case thermal resistance	$R_{\theta JC}$	25	°C/W
Junction-to-ambient thermal resistance	$R_{\theta JA}$	70	°C/W

<b>ELECTRICAL SPECIFICATIONS</b> ( $T_A = 25^\circ\text{C}$ unless otherwise noted)						
<b>PARAMETER</b>		<b>CONDITIONS</b>	<b>SYMBOL</b>	<b>TYP</b>	<b>MAX</b>	<b>UNIT</b>
Forward voltage <sup>(1)</sup>	SS12LS	$I_F = 0.5\text{A}, T_J = 25^\circ\text{C}$	$V_F$	-	-	V
	SS13LS			-	-	V
	SS14LS			-	0.51	V
	SS16LS			-	0.58	V
	SS110LS			-	0.70	V
	SS115LS			-	0.75	V
	SS12LS	$I_F = 1.0\text{A}, T_J = 25^\circ\text{C}$		-	0.45	V
	SS13LS			-	0.50	V
	SS14LS			-	0.55	V
	SS16LS			-	0.70	V
	SS110LS			-	0.80	V
	SS115LS			-	0.90	V
Reverse current @ rated $V_R$ <sup>(2)</sup>	SS12LS SS13LS SS14LS SS16LS	$T_J = 25^\circ\text{C}$	$I_R$	-	400	$\mu\text{A}$
	SS110LS SS115LS			-	50	$\mu\text{A}$
	SS12LS SS13LS SS14LS SS16LS	$T_J = 125^\circ\text{C}$		-	-	mA
	SS110LS SS115LS			-	0.5	mA
Junction capacitance		1MHz, $V_R = 4.0\text{V}$	$C_J$	80	-	pF

**Notes:**

1. Pulse test with  $PW = 0.3\text{ms}$
2. Pulse test with  $PW = 30\text{ms}$

<b>ORDERING INFORMATION</b>		
<b>ORDERING CODE<sup>(1)</sup></b>	<b>PACKAGE</b>	<b>PACKING</b>
SS1xLS	SOD-123HE	10,000 / Tape & Reel

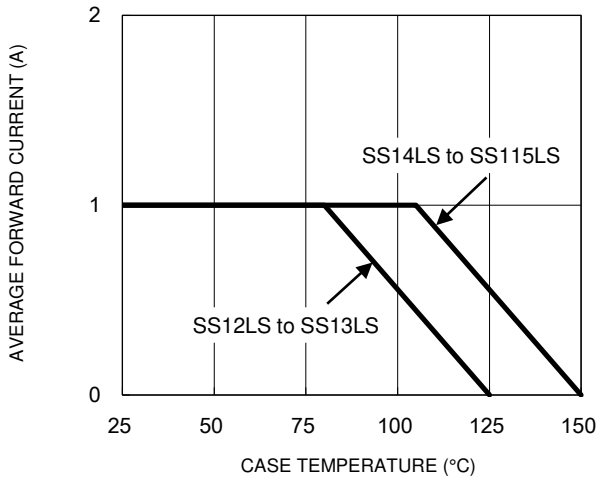
**Notes:**

1. "x" defines voltage from 20V(SS12LS) to 150V(SS115LS)

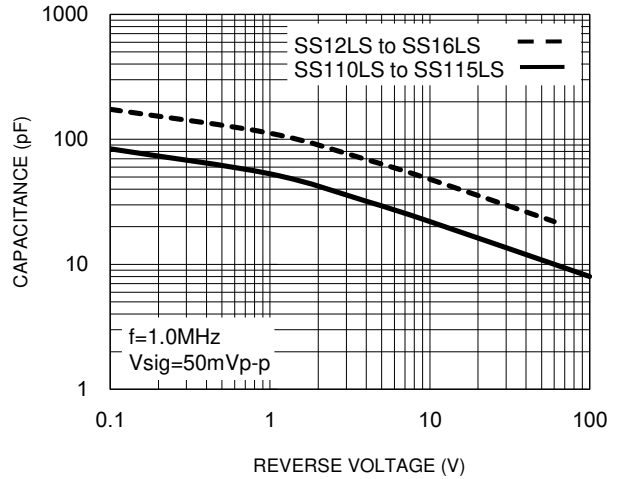
**CHARACTERISTICS CURVES**

( $T_A = 25^\circ\text{C}$  unless otherwise noted)

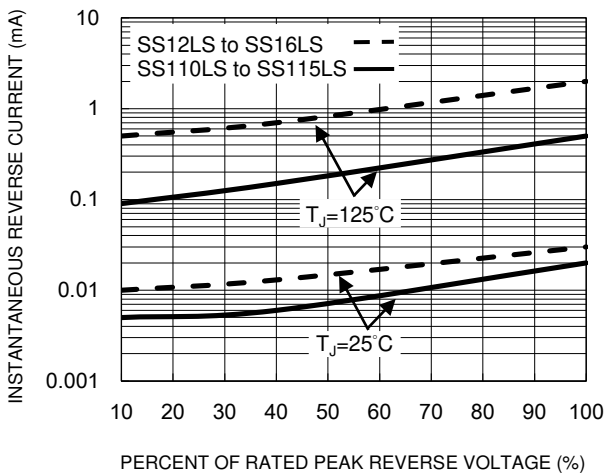
**Fig.1 Forward Current Derating Curve**



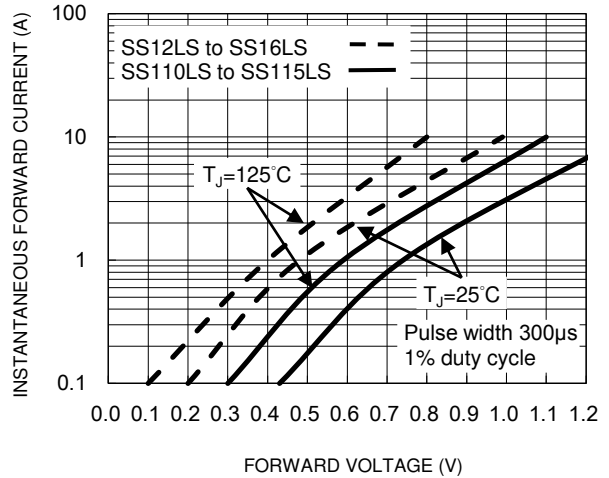
**Fig.2 Typical Junction Capacitance**



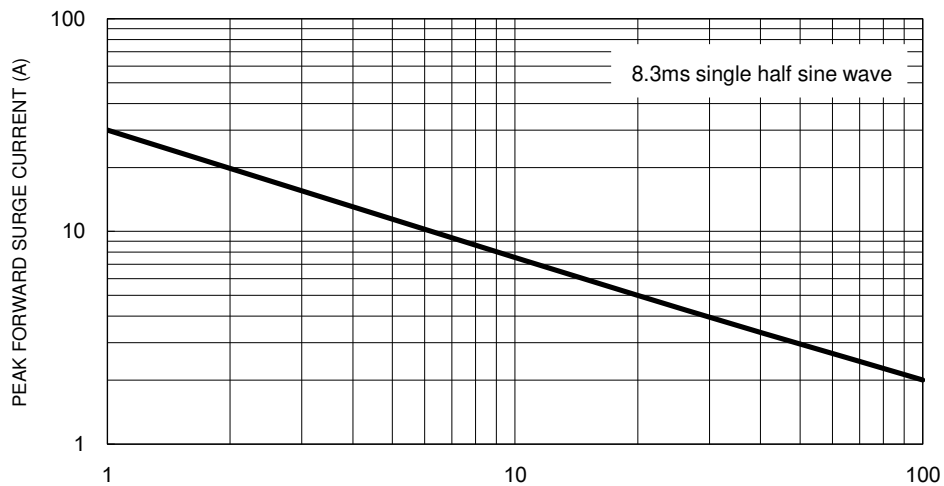
**Fig.3 Typical Reverse Characteristics**



**Fig.4 Typical Forward Characteristics**

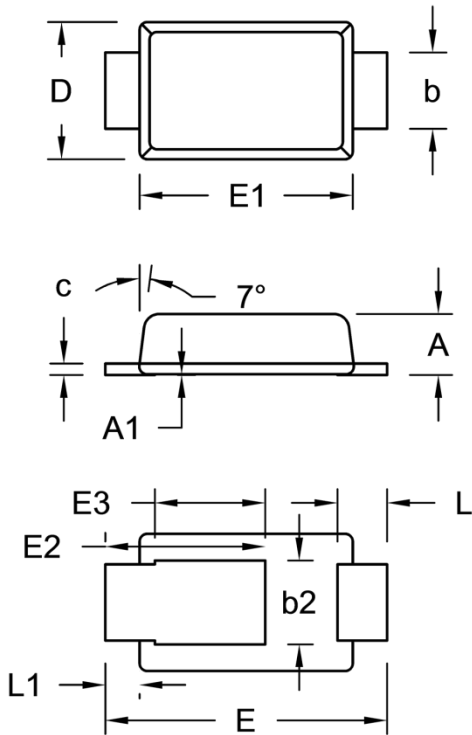


**Fig.5 Maximum Non-Repetitive Forward Surge Current**



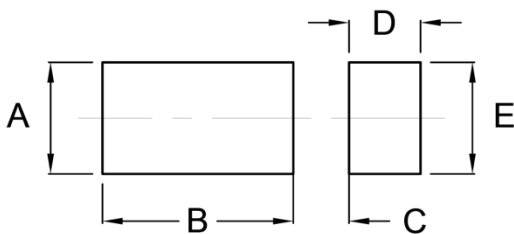
**PACKAGE OUTLINE DIMENSIONS**

SOD-123HE



DIM.	Unit (mm)		Unit (inch)	
	Min.	Max.	Min.	Max.
A	0.75	0.85	0.030	0.033
A1	0.00	0.02	0.000	0.001
b	0.85	1.15	0.033	0.045
b2	0.95	1.25	0.037	0.049
c	0.10	0.20	0.004	0.008
D	1.65	1.95	0.065	0.077
E	3.50	3.90	0.138	0.154
E1	2.60	3.00	0.102	0.118
E2	1.90	2.30	0.075	0.091
E3	1.35	1.55	0.053	0.061
L	0.55	0.75	0.022	0.030
L1	0.35	0.55	0.014	0.022

**SUGGESTED PAD LAYOUT**



Symbol	Unit (mm)	Unit (inch)
A	1.40	0.055
B	2.40	0.094
C	0.70	0.028
D	0.90	0.035
E	1.40	0.055

**MARKING DIAGRAM**



P/N = Marking Code  
 YW = Date Code  
 F = Factory Code

## **Notice**

Specifications of the products displayed herein are subject to change without notice. TSC or anyone on its behalf, assumes no responsibility or liability for any errors or inaccuracies.

Purchasers are solely responsible for the choice, selection, and use of TSC products and TSC assumes no liability for application assistance or the design of Purchasers' products.

Information contained herein is intended to provide a product description only. No license, express or implied, to any intellectual property rights is granted by this document. Except as provided in TSC's terms and conditions of sale for such products, TSC assumes no liability whatsoever, and disclaims any express or implied warranty, relating to sale and/or use of TSC products including liability or warranties relating to fitness for a particular purpose, merchantability, or infringement of any patent, copyright, or other intellectual property right.

The products shown herein are not designed for use in medical, life-saving, or life-sustaining applications. Customers using or selling these products for use in such applications do so at their own risk and agree to fully indemnify TSC for any damages resulting from such improper use or sale.