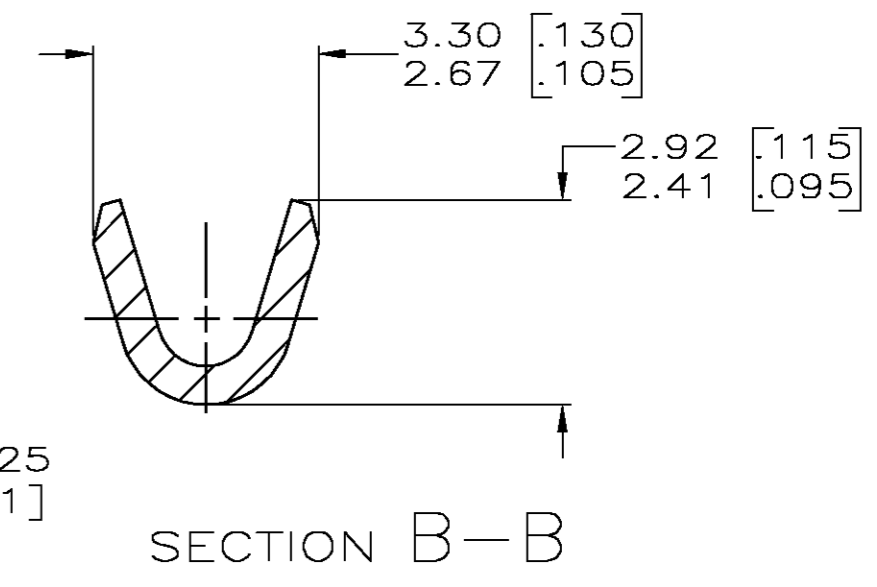
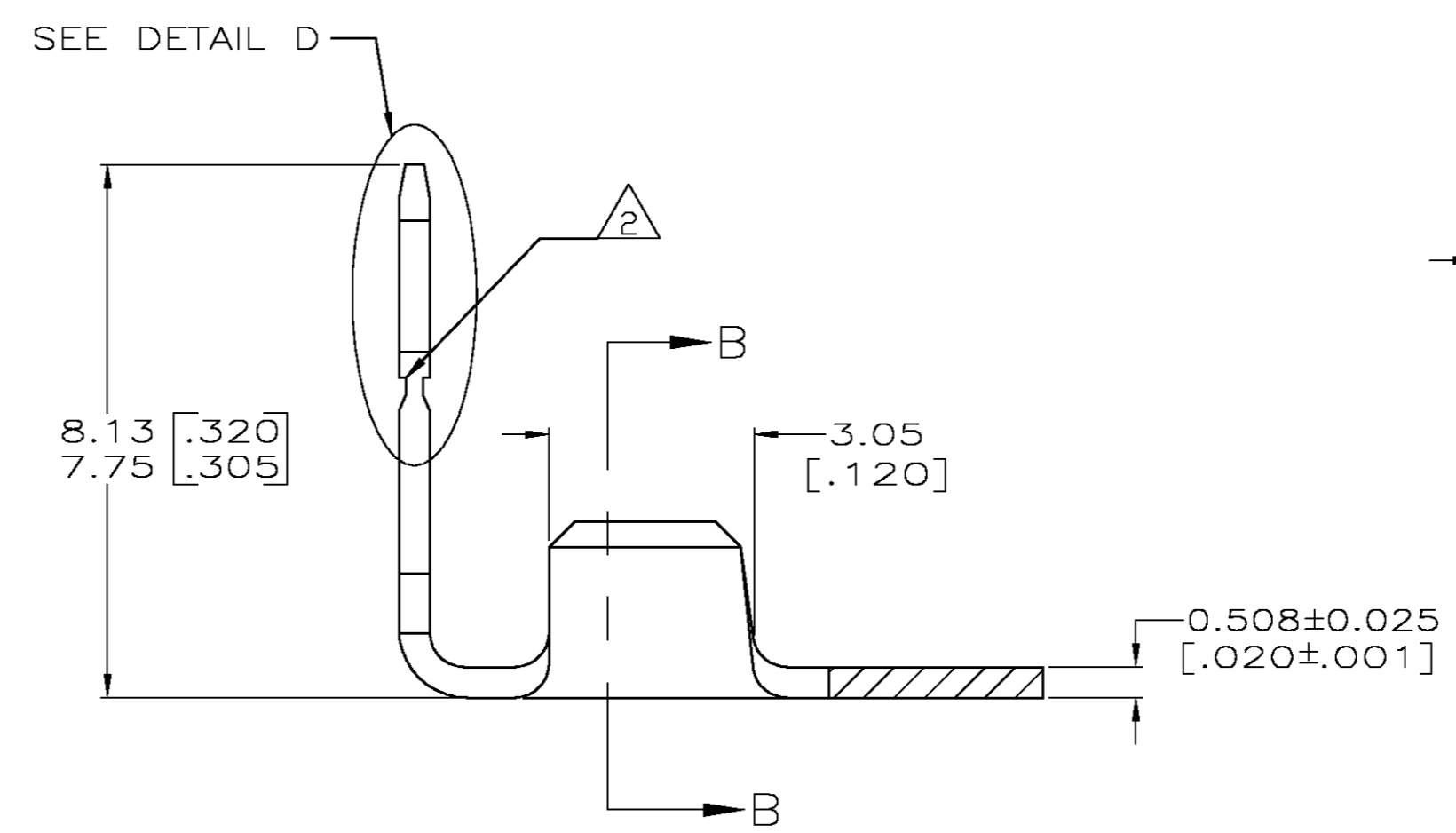
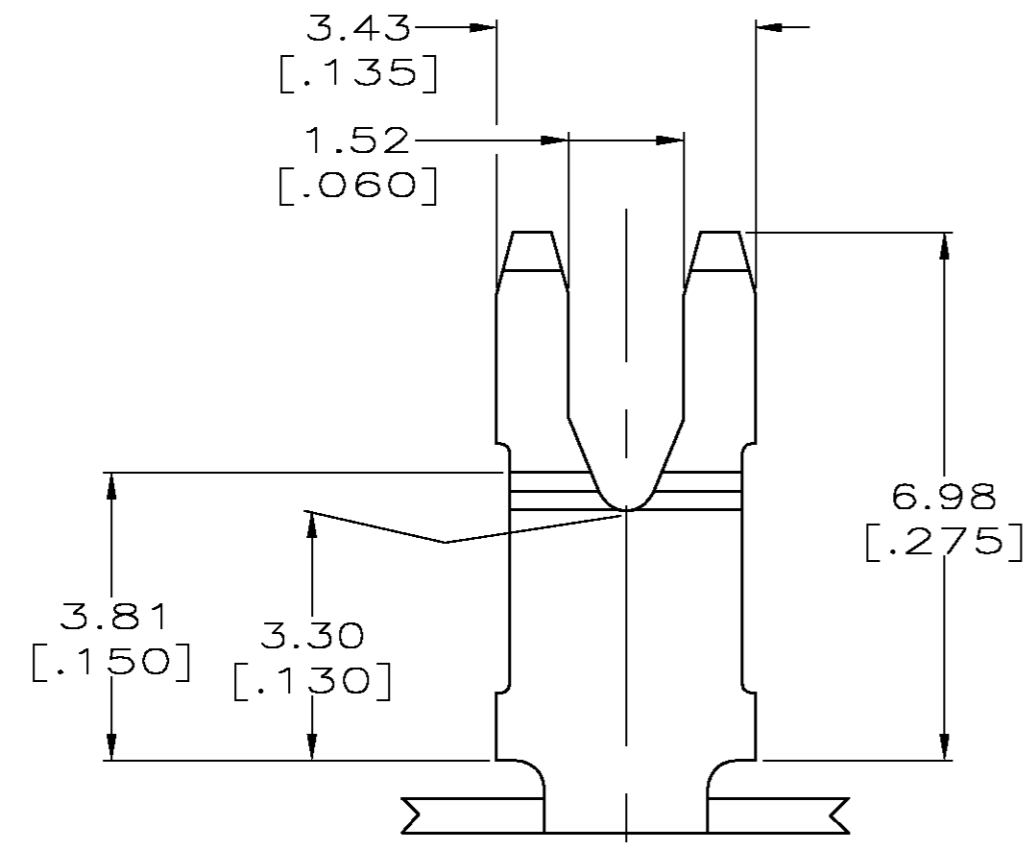
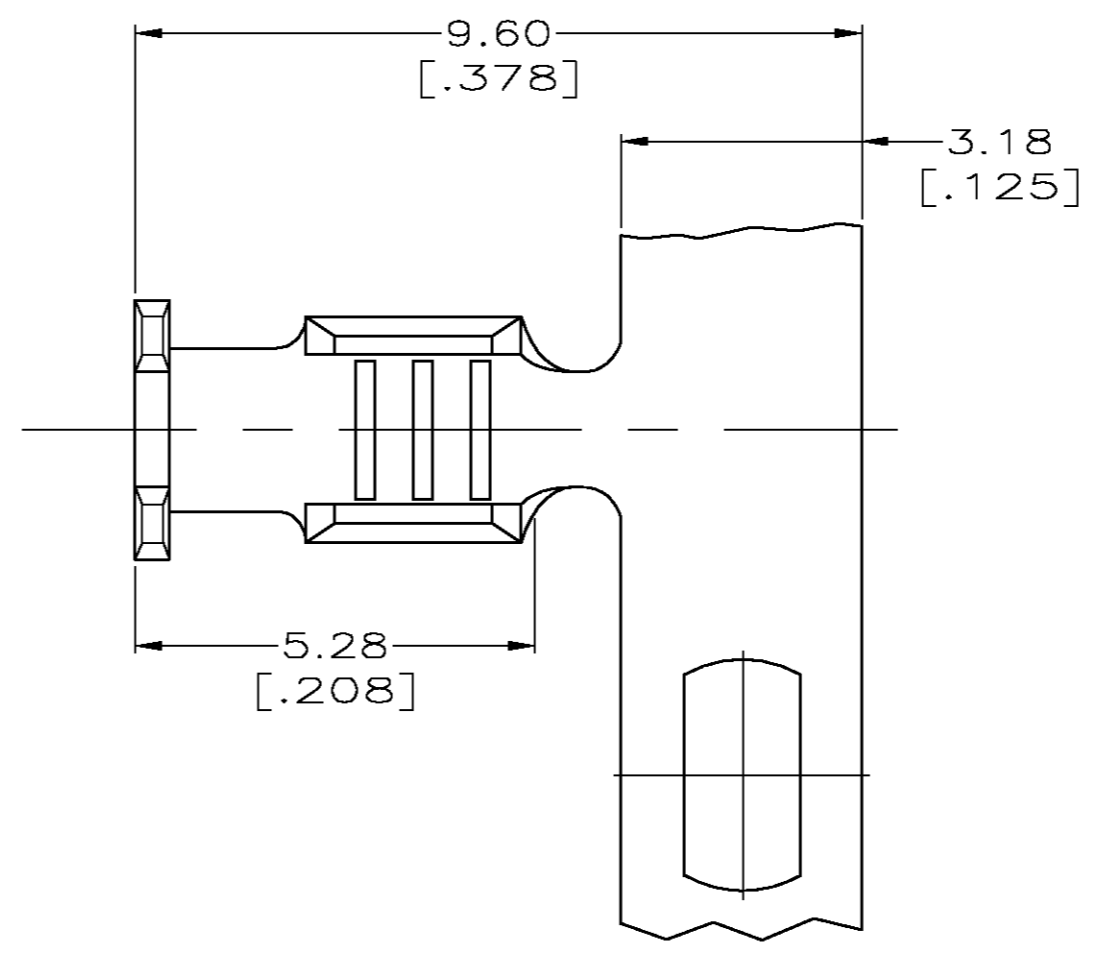
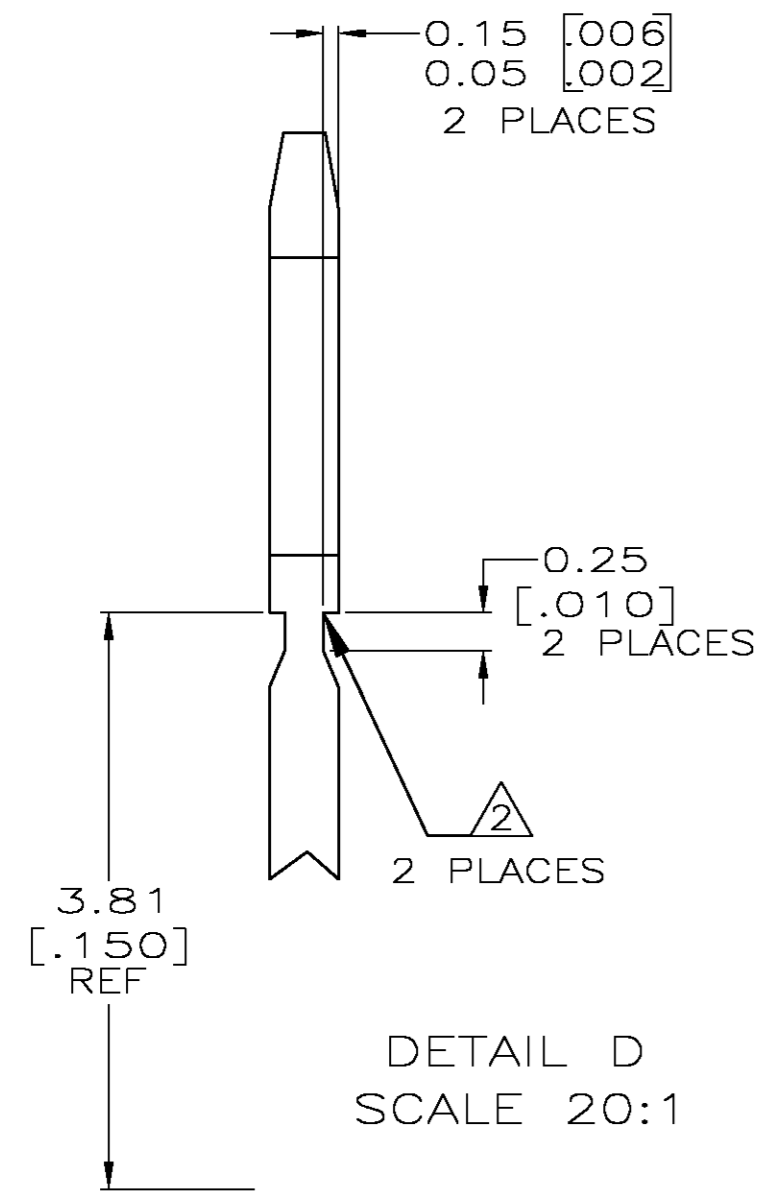


THIS DRAWING IS UNPUBLISHED. RELEASED FOR PUBLICATION  
 © COPYRIGHT BY TYCO ELECTRONICS CORPORATION. ALL RIGHTS RESERVED.

LOC		DIST		REVISIONS			
P	LTR	DESCRIPTION		DATE	DWN	APVD	
AF	50	G		REVISED PER 0G3A-0750-02	18DEC02	MF	KR

1 CONTINUOUS STRIP ON REELS WITH TERMINALS LOCATED ON  $9.14 \pm 0.08$  [.360 ± .003] CENTERS.  
 △ FOR OPTIMUM RETENTION FORCE IN POKE-IN TYPE MAG-MATE TERMINALS, ONE OF THE SERRATIONS AS SHOWN MUST BE ENGAGED WITH THE EDGE OF THE LEAF.



0.3-0.8mm <sup>2</sup> [#22-18 AWG]	63410-1
WIRE RANGE	PART NUMBER

THIS DRAWING IS A CONTROLLED DOCUMENT.		DWN	JR RUTH	15NOV01	 Tyco Electronics Corporation Harrisburg, PA 17105-3608
DIMENSIONS: MM		CHK	MICHAEL S. FEHER	15NOV01	
TOLERANCES UNLESS OTHERWISE SPECIFIED:		APVD	KURT A. RANDOLPH	15NOV01	NAME
0 PLC	± -	PRODUCT SPEC	108-22055		TAB, POKE-IN, MAG-MATE™
1 PLC	± -	APPLICATION SPEC	114-2050		
2 PLC	± 0.25 [.010]	SIZE	A2	CAGE CODE	00779
3 PLC	± -	WEIGHT	-	DRAWING NO	C=63410
4 PLC	± -	MATERIAL	082 BRASS	RESTRICTED TO	-
ANGLES	± -	FINISH	0.000381 [.000015] MIN PRE-TIN PLATE	SCALE	10:1
CUSTOMER DRAWING		SHEET 1 OF 1		REV	G