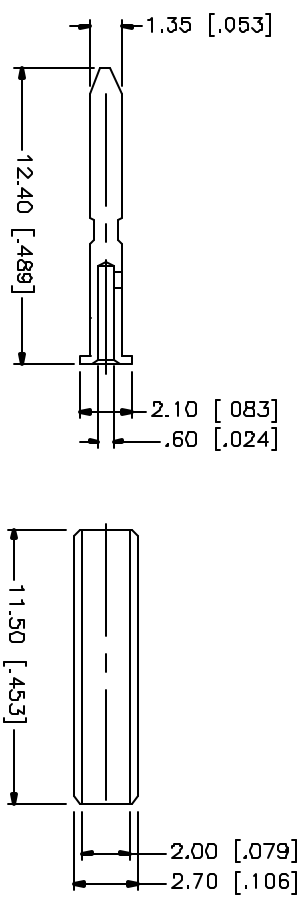
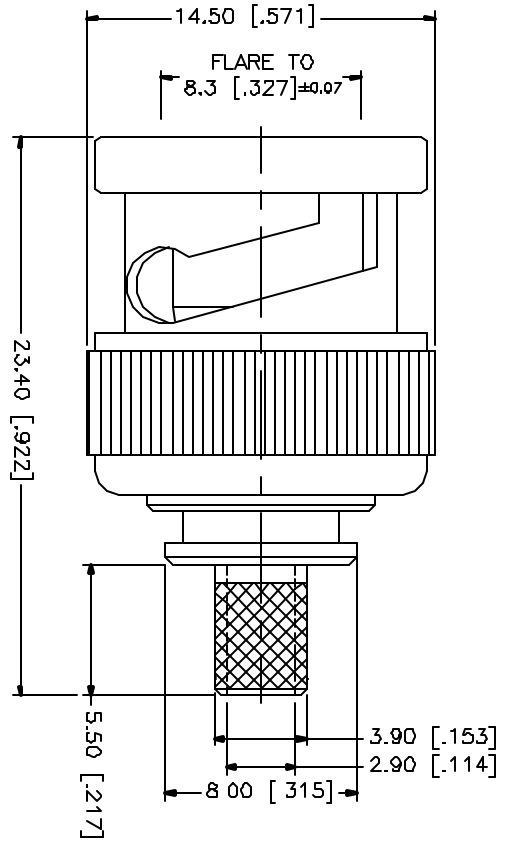
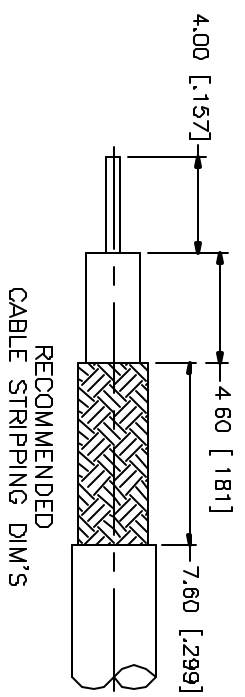
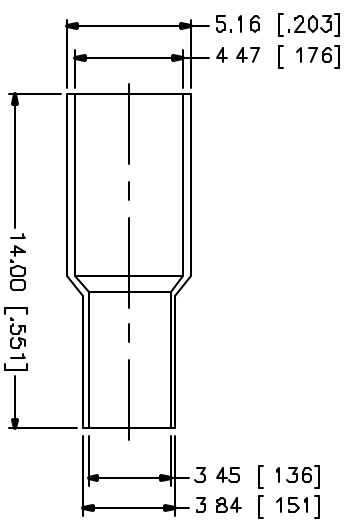


REV.	DATE	DESCRIPTION
A	01/07/01	ADD CRIMP NOTES/ MODIFY CONTACT PIN, FERRULE



- CRIMP NOTES:
1. CRIMPED FERRULE
HEX CRIMP SIZE .178"
 2. CRIMPED CONTACT PIN
HEX CRIMP SIZE .043"



DESCRIPTION	MATERIAL	FINISH	UNLESS OTHERWISE SPECIFIED DIMENSIONS ARE IN MILLIMETERS DIMENSIONS IN () ARE IN INCHES FOR CUSTOMER REFERENCE ONLY	APPROVALS	DATE	TITLE	SCALE	SHEET	
1 SHELL	BRASS	NICKEL	UNLESS OTHERWISE SPECIFIED TOLERANCES FOR MILLIMETERS ARE: 0.5-6 = ± 0.2 6-30 = ± 0.4 30-120 = ± 0.6 120-315 = ± 1 315-1000 = ± 1.6 1000-2000 = ± 2.4	DRAWN	01/07/01	comnex Connector Corporation BNC CRIMP PLUG (FOR LIBERTY RGB6C/22-2P CABLE)	NA	112491-11	
2 BODY	BRASS	NICKEL		CHECKED	G.R.S.			SIZE	
3 INSULATOR	TEFLON	NATURAL		ISSUED				FSM#	
4 CONTACT PIN	BRASS	GOLD						99001	DWG. NO.
5 SLEEVE	TEFLON	NATURAL							112491-11.DWG
6 FERRULE	BRASS	NICKEL							REV.
7									A
8				DO NOT SCALE DRAWING					1 OF 1