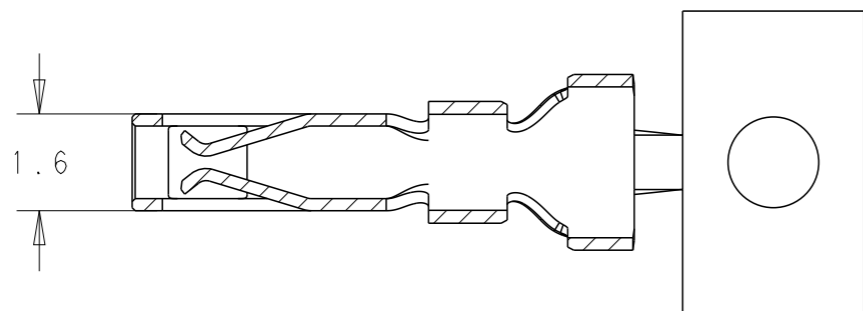
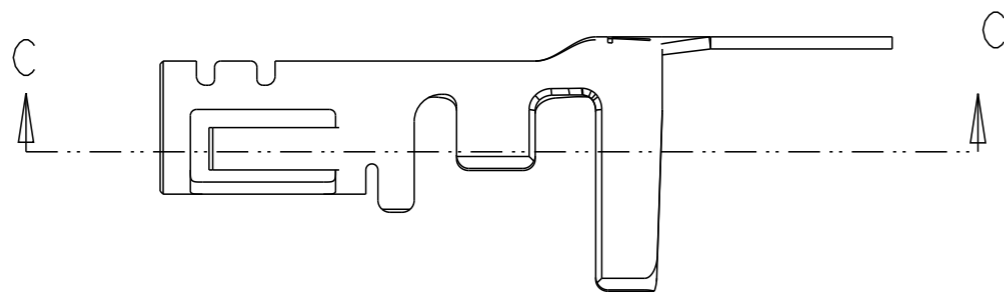


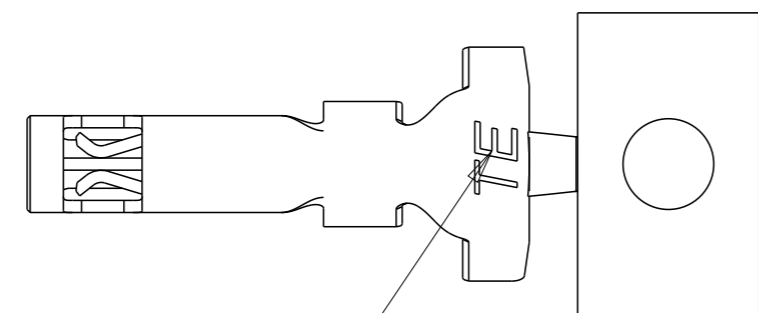
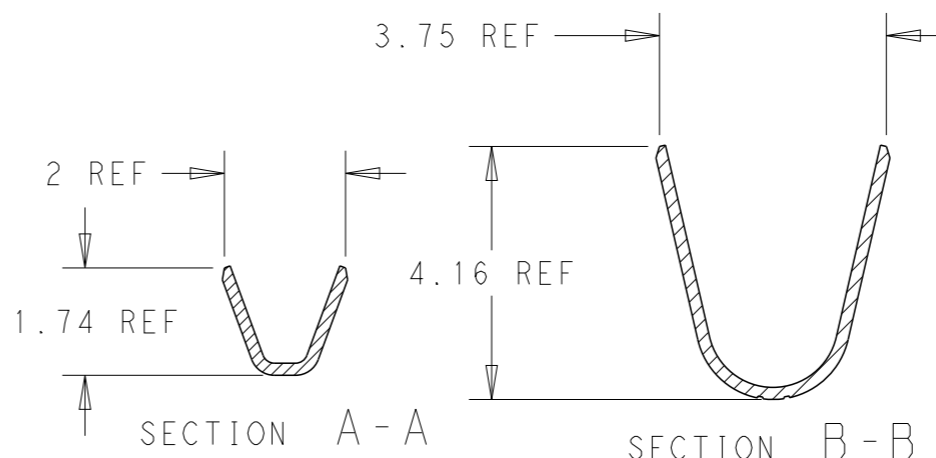
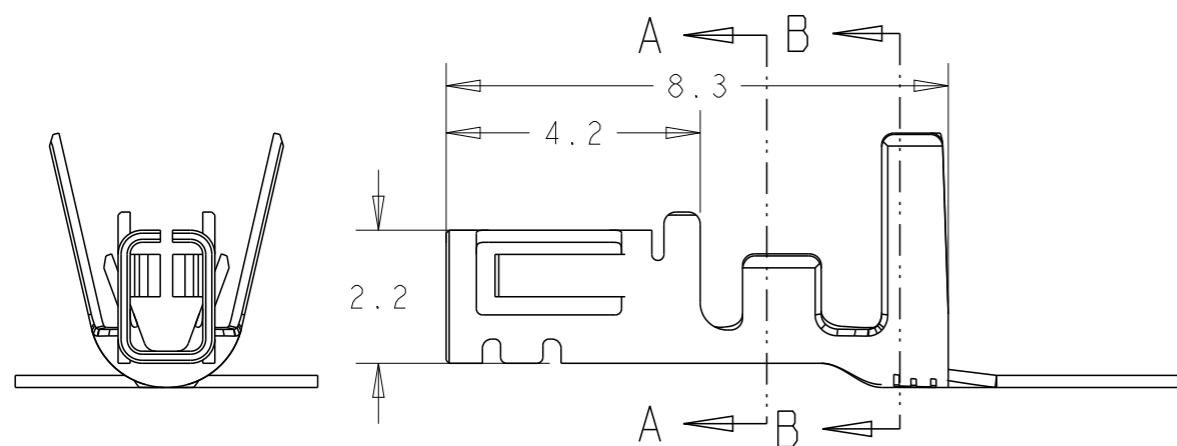
LOC	DIST	REVISIONS					
		P	LTR	DESCRIPTION	DATE	DWN	APVD
-	-		B	REVISED PER ECR-21-104980	14JUN2021	SC	D.Z



SECTION C-C

NOTES:

- 1. MATERIAL: PRE-TIN COPPER ALLOY
- 2. APPLICABLE WIRE: AWG #20-#24, INSULATION DIAØ 1.5-2.5MM
- 3. MATING PLUG HOUSING: \*-1971905-\*

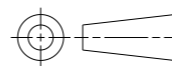


TRADE MARK

P/N 1983780-1

THIS DRAWING IS A CONTROLLED DOCUMENT.


DIMENSIONS: mm



MATERIAL SEE NOTE

TOLERANCES UNLESS OTHERWISE SPECIFIED:	
0 PLC	±
1 PLC	±0.3
2 PLC	±0.1
3 PLC	±0.001
4 PLC	±0.0001
ANGLES	±
FINISH	-

DWN	LZH	22-Jun-21
CHK	HAPYE.WU	22-Jun-21
APVD	YH.MAO	22-Jun-21
PRODUCT SPEC	108-106094	
APPLICATION SPEC	114-106094	
WEIGHT	-	

		TE Connectivity	
		NAME	
NEXT GENERATION G13.3 RECEPTACLE CONTACT			
SIZE	CAGE CODE	DRAWING NO	RESTRICTED TO
A3	00779	©-1983780	-

Customer Drawing SCALE 8:1 SHEET 1 OF 1 REV B