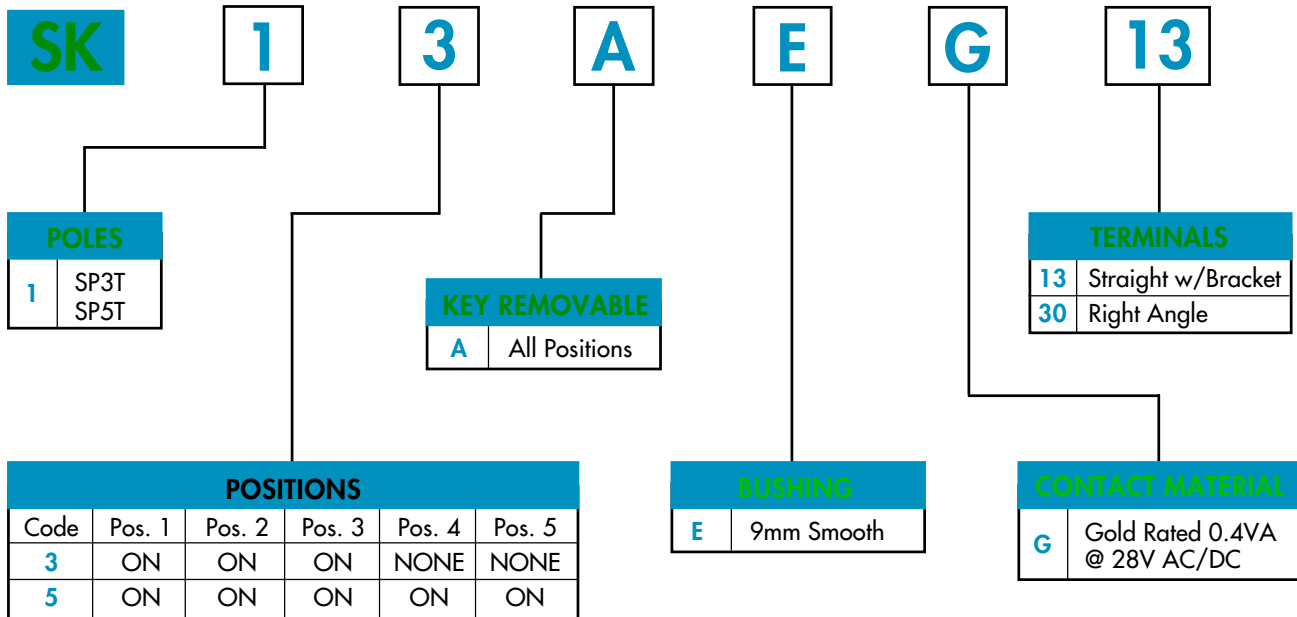
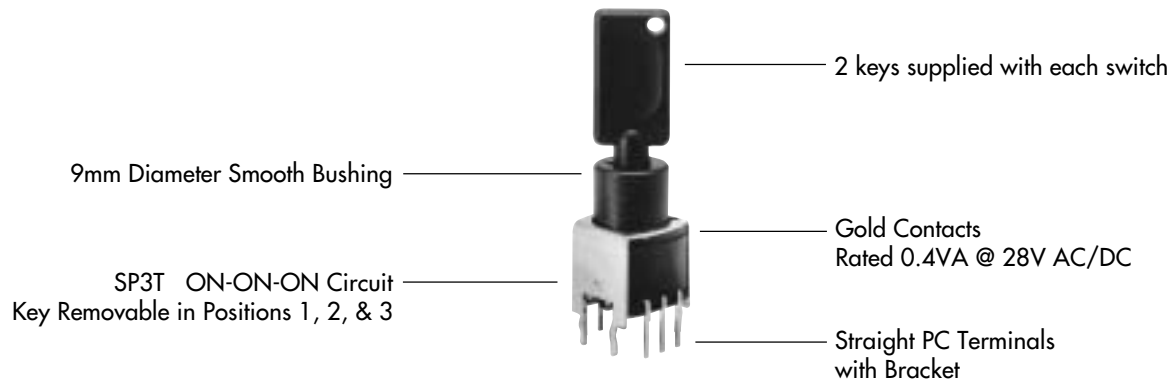


TYPICAL SWITCH ORDERING EXAMPLE



DESCRIPTION FOR TYPICAL ORDERING EXAMPLE

SK13AEG13



GENERAL SPECIFICATIONS

Electrical Capacity (Resistive Load)

Power Level: 0.4VA @ 28V AC/DC
(Applicable Range 0.1mA ~ 0.1A @ 20mV ~ 28V)

Other Ratings

Contact Resistance: 100 milliohms maximum
Insulation Resistance: 100 megohms minimum @ 500V DC
Dielectric Strength: 500V AC minimum
Mechanical Life: 30,000 cycles minimum
Electrical Life: 20,000 cycles minimum
Static Capability: Withstands 15 kilovolts ESD
Nominal Operating Torque: 2.039 grams-cm (2.83 ounce-in)
Contact Timing: Break before make
Angle of Throw: 45° for 3-position & 5-position

Materials & Finishes

Key: Polyacetal
Housing/Bushing: Glass fiber reinforced polyester (PBT)
Base: Glass fiber reinforced polyamide
Rotor & Stopper: Polyacetal
Tumbler Plate: Brass
Movable Contactor: Beryllium copper with gold plating over nickel
Stationary Contacts: Phosphor bronze with tin-lead plating
Terminals: Phosphor bronze with tin-lead plating
Mounting Bracket: Steel with tin-lead plating

Environmental Data

Operating Temp Range: -25°C through +70°C (-13°F through +158°F)
Humidity: 90 ~ 95% for 96 hours @ 40°C (104°F)
Vibration: 10 ~ 55 Hz with peak-to-peak amplitude of 1.5mm traversing the frequency range & returning in 1 minute; 3 right angled directions for 2 hours
Shock: 50g acceleration (tested in 6 right angled directions, with 5 shocks in each direction)

Installation

Soldering Time & Temperature: 3 seconds @ 350°C
Process Seal: See Sealed Construction on Engineering Particulars.

POLES, CIRCUITS, & KEY-REMOVABLE POSITIONS

Pole & Throw	Model	Key Positions					Connected Terminals (Terminal numbers are not on switch.)					Schematic	⊙ = Key Removable • = Not Removable ✓ = Maximum Arc
		Pos 1	Pos 2	Pos 3	Pos 4	Pos 5	Pos 1	Pos 2	Pos 3	Pos 4	Pos 5		
SP3T	SK13A	ON	ON	ON	----	----	COM-1	COM-2	COM-3	----	----		
SP5T	SK15A	ON	ON	ON	ON	ON	COM-1	COM-2	COM-3	COM-4	COM-5		

KEY REMOVABLE

A All Positions (45° angular throw)

BUSHING

E 9mm Smooth

CONTACT MATERIAL & RATING

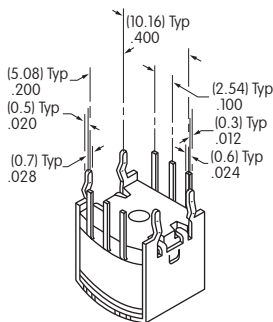
G Gold over Brass or Copper

Logic Level

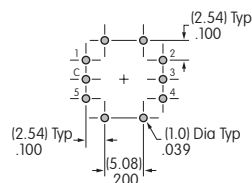
0.4VA @ 28V AC/DC maximum

TERMINALS

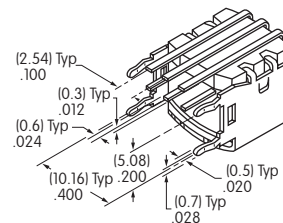
13 Straight PC with Bracket



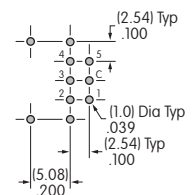
Single Pole



30 Right Angle PC



Single Pole

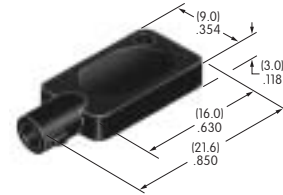


KEY

AT4094 for Antistatic Subminiature Models

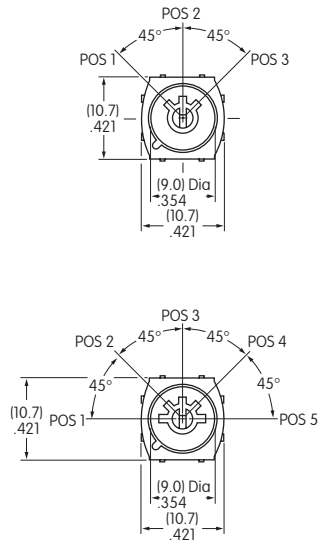
Polyacetal

2 keys provided with each switch
(no master key available)



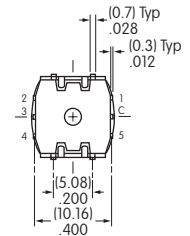
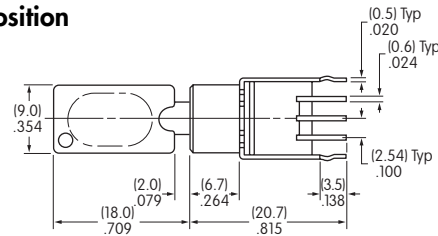
TYPICAL SWITCH DIMENSIONS

Straight PC with Bracket



On 3-position models terminals 1 & 5 are support pins.

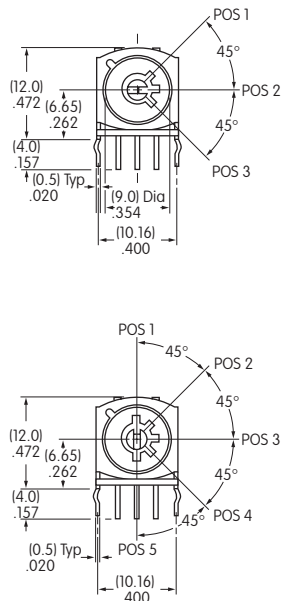
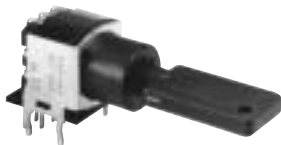
3 Position



5 Position

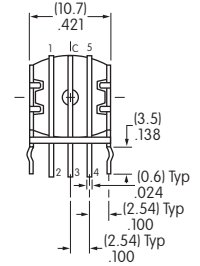
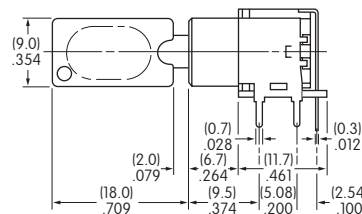
SK13AEG13

Right Angle PC



On 3-position models terminals 1 & 5 are support pins.

3 Position



5 Position

SK15AEG30