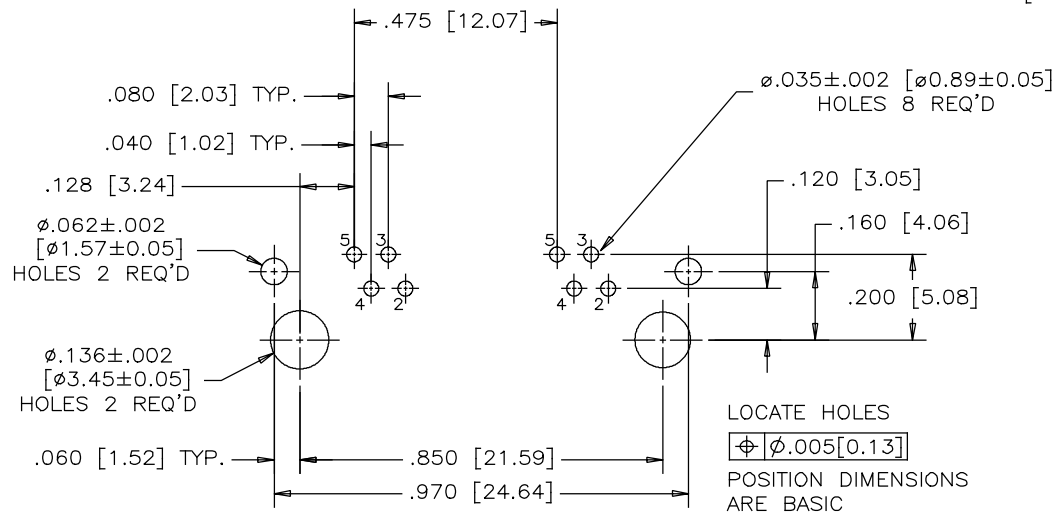
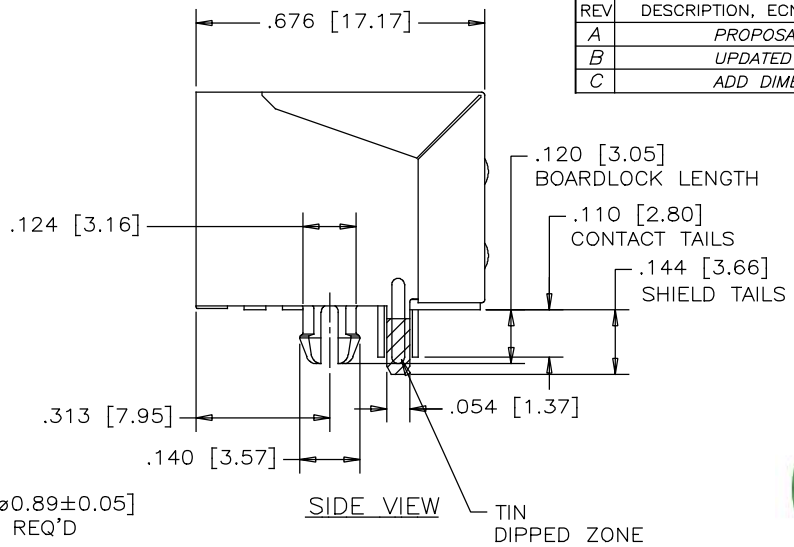
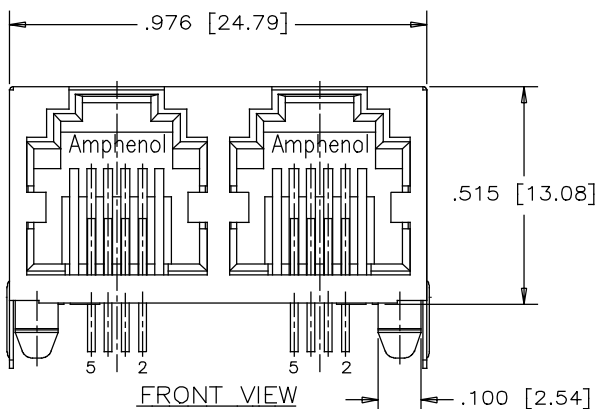
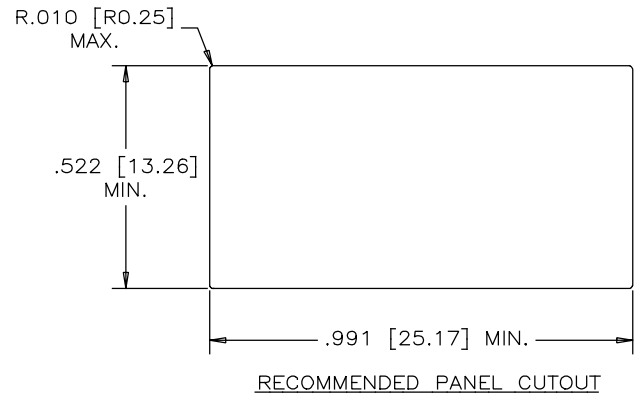


REVISIONS			
REV	DESCRIPTION, ECN, EAR NO.	DATE	APP'D
A	PROPOSAL	FEB21/14	L.CHAN
B	UPDATED TITLE	MAY07/14	L.CHAN
C	ADD DIMENSIONS	MAY26/14	L.CHAN



RECOMMENDED P.C.B. LAYOUT
(COMPONENT SIDE OF BOARD)



RECOMMENDED PANEL CUTOUT

MATERIALS:

PLASTIC HOUSING: HIGH TEMPERATURE RESISTANT NYLON
UL FLAMMABILITY 94V-0.
SOLDER REFLOW PROCESS COMPATIBLE.

CONTACT: PHOSPHOR BRONZE, GOLD PLATED ON MATING AREA
OVER NICKEL, AND MATTE-TIN ON TAILS.

CONTACT PLATING: 50 MICROINCHES [1.27 MICRONS] MINIMUM NICKEL.
6 MICROINCHES [0.15 MICRONS] MINIMUM GOLD ON MATING SURFACES.
100 MICROINCHES [2.54 MICRONS] MINIMUM MATTE-TIN ALLOY ON CONTACT TAILS.

SHIELD: COPPER ALLOY; NICKEL WITH TIN DIPPED PCB TAILS.

RECOMMENDED SOLDERING TEMPERATURE:
WAVE SOLDERING OR REFLOW SOLDERING AT 260°C MAXIMUM
FOR 5 SEC MAXIMUM.

AMPHENOL PART NUMBER: RJE01-145-02

UNLESS SPECIFIED OTHERWISE	DRAWN FRANK.W	DATE FEB21/14
PRIMARY UNITS INCH	CHECKED L.CHAN	FEB21/14
SECONDARY MILLIMETER	M.E. APP'D	
REFERENCE IN PARENTHESES	Q.A. APP'D	
GENERAL TOLERANCES	DWG APPR.	
1 DECIMAL PLACE ±0.025	ENG. REL. NO.	
2 DECIMAL PLACES ±0.020	REF.	
3 DECIMAL PLACES ±0.015	THIRD ANGLE PROJECTION	DO NOT SCALE DRAWING
ANGULAR DEGREES ±1.0°		

Amphenol Canada Corp. www.amphenolcanada.com	
TITLE 2 PORT HIGH SPEED MODULAR JACK 6 POSITIONS, 4 CONTACTS, SHIELD WITH PCB TAIL ONLY - RoHS COMPLIANT	
DWG. NO.	P-RJE01-145-02
REV	C
CODE ID NO. 03554	DWG SIZE: C SCALE: N/A SHEET 1 OF 1