

1

2

3

4

PRODUCT NUMBER
SEE TABLE

COMPANY LOGO

ETC.
COLUMN 2
COLUMN 1

ROW B
ROW A

.100
2.54

R .065
1.65 REF
-A-

.100
2.54
DIM D
NOTE 4

DIM G

DIM E

OVERALL LENGTH
DIM L

$\phi .020/.51$ (M) A-B

$\phi .020/.51$ (M) A-B

R .065
REF 1.65
-B-

$\square .002/1$

.050
1.27

.435
11.05

.135
3.43

.550
13.97
REF

.515
13.08
REF

TAIL LENGTH
DIM H
 $\pm .015$
 $\pm .038$

NOTE 2 & 3

$\square .003/1$
NOTE 6

NOTE 6

MATING LENGTH
.318 $\pm .010$
8.08 ± 0.25
LONG PIN

MATING LENGTH
.260 $\pm .010$
6.60 ± 0.25
SHORT PIN

93° MAX ALL DIRECTIONS

$\square .025 \pm .001$
.64 ± 0.03

$\phi \phi .015/.38$ (M) A-B AT TIPS

.025
0.64 REF

$\phi \phi .025/.64$ AT TIPS

SECTION Y-Y



Copyright FCI.

www.fciconnect.com				surface 6.4 ISO 1302	tolerance std ISO 406 ISO 1101	projection 	INCH/MM
TOLERANCES UNLESS OTHERWISE SPECIFIED				ANGULAR	LINEAR	size A4	Scale 1.000
Dr	JANMY ZHOU	2012-09-06		0.X	± 0.3	ECN	-
Eng	JANMY ZHOU	2012-09-06		0.XX	± 0.15	Spec ref	
Chr	JANMY ZHOU	2012-09-06	0° $\pm 2^\circ$	0.XXX	± 0.05		
Appr	RICK BIAN	2012-09-06	Product family	HEADERS			
FCI				title FMLB VERTICAL GUIDE PIN (SLOTTED) HEADER		dwg no 10122532	Rev. A
				catalog no		CUSTOMER	sheet 1 of 2

rev	ecn no	dr	date
A	-	J.Z	2012-09-06

1

2

3

4

PRODUCT NUMBER	SIZE NOTE 5	TAIL LENGTH DIM H	DIM D	DIM G	DIM E	OVERALL LENGTH DIM L	PLATING	SHORT PIN POSITION	LEAD FREE OPTION
10122532 -001	2 x 6	0.120/3.05	NOTE 4	0.37/9.4+D DIM	0.40/10.2+D DIM	0.48/12.2+D DIM	NOTE 10	A6, B6	NOTE 8

NOTES:

- ① MOLDING MATERIAL: HI-TEMP RESIN
PER UL 94V-0
COLOR: NATURAL
- ② TERMINAL MATERIAL: 3/4 HARD PHOS BRONZE
UNS C5100.
- 3. PIN RETENTION TO BE 3 LBS/1.36 KG
MIN PER PIN IN EITHER DIRECTION.
- ④ DIM D =(NO. OF COLUMNS-1)TIMES .100/2.54
- ⑤ SIZES 2 X 1 THRU 2 X 4 NOT AVAILABLE.
- ⑥ FLATNESS IS MEASURED FROM THE BOTTOM
OF THE END STANDOFFS.
- ⑦ RECOMMENDED LAYOUT SEE FIGURE A.
- ⑧ ADD "LF" SUFFIX AT THE END OF PART NUMBER FOR LEAD FREE OPTION.
- ⑨ THIS PRODUCT MEETS EUROPEAN UNION DIRECTIVES AND OTHER
COUNTRY REGULATION AS DESCRIBED IN GS-22-008.
- ⑩ PLATING:
30u"/0.76u MIN Au ON CONTACT AREA AND 100u"/2.54u MIN Sn ON TAIL
OVER 50u"/1.27u Ni

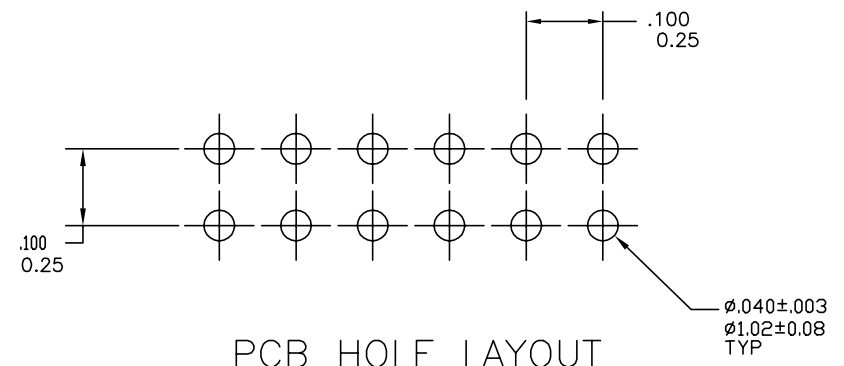


FIGURE A

www.fciconnect.com			surface ISO 1302 ✓	tolerance std ISO 406 ISO 1101	projection ISO 1101	INCH/MM	
			TOLERANCES UNLESS OTHERWISE SPECIFIED				← →
Dr	JANMY ZHOU	2012-09-06	ANGULAR	LINEAR	0.X	±0.3	size A4
Eng	JANMY ZHOU	2012-09-06			0.XX	±0.15	
Chr	JANMY ZHOU	2012-09-06	0°	±2°	0.XXX	±0.05	ECN -
Appr	RICK BIAN	2012-09-06	Product family		HEADERS		Spec ref
FCI			title FMLB VERTICAL GUIDE PIN (SLOTTED) HEADER		dwg no 10122532		Rev. A
			catalog no		CUSTOMER		sheet 2 of 2



Copyright FCI.