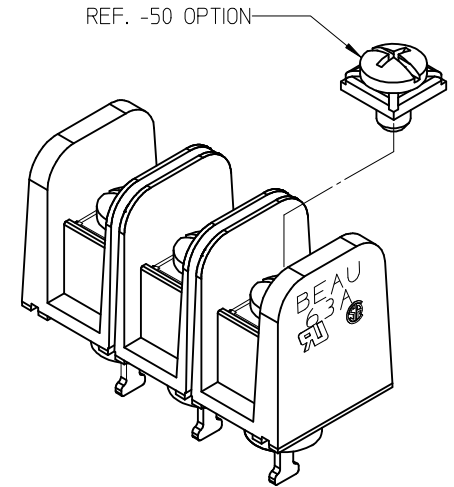
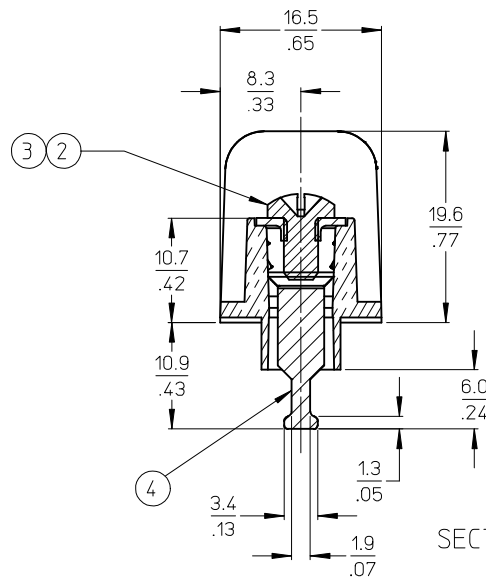
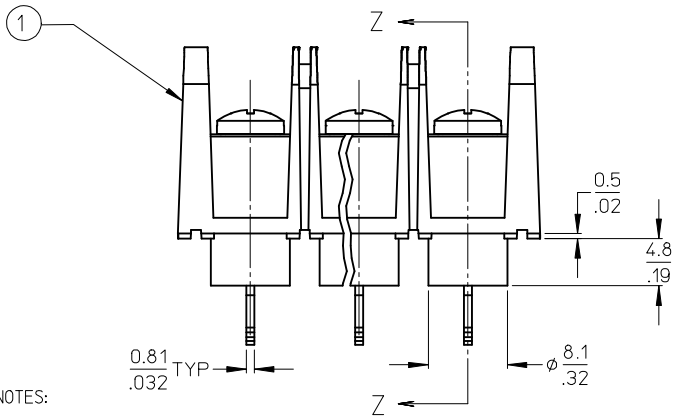


| MATERIAL NUMBER (STD.) | MATERIAL NUMBER (-50) | NO. OF CIRCUITS | A | B |
|------------------------|-----------------------|-----------------|--------------|----------------|
| 386303302 | 386303902 | 2 | 25.9 (1.02) | 11.13 (.438) |
| 386303303 | 386303903 | 3 | 37.1 (1.46) | 22.22 (.875) |
| 386303304 | 386303904 | 4 | 48.3 (1.90) | 33.35 (1.313) |
| 386303305 | 386303905 | 5 | 59.2 (2.33) | 44.45 (1.750) |
| 386303306 | 386303906 | 6 | 70.4 (2.77) | 55.57 (2.188) |
| 386303307 | 386303907 | 7 | 81.5 (3.21) | 66.67 (2.625) |
| 386303308 | 386303908 | 8 | 92.7 (3.65) | 77.80 (3.063) |
| 386303309 | 386303909 | 9 | 103.6 (4.08) | 88.90 (3.500) |
| 386303310 | 386303910 | 10 | 114.8 (4.52) | 100.03 (3.938) |
| 386303311 | 386303911 | 11 | 125.9 (4.96) | 111.13 (4.375) |
| 386303312 | 386303912 | 12 | 137.2 (5.40) | 122.25 (4.813) |
| 386303313 | 386303913 | 13 | 148.1 (5.83) | 133.35 (5.250) |
| 386303314 | 386303914 | 14 | 159.3 (6.27) | 144.45 (5.687) |
| 386303315 | 386303915 | 15 | 170.4 (6.71) | 155.58 (6.125) |
| 386303316 | 386303916 | 16 | 181.6 (7.15) | 166.70 (6.563) |



- NOTES:
1. MATERIAL: SEE TABLE
 2. FINISHES: SEE TABLE
 3. PRODUCT SPECIFICATION: NOT REQUIRED
 4. PACKAGING: NOT REQUIRED
 5. MATES WITH: NONE
 6. *XX* REFERS TO QTY. OF CIRCUITS
 7. ROHS COMPLIANT (B)

| ITEM | QTY. | DESCRIPTION | MATERIAL | FINISH |
|------|------|--|---------------------|--------------------|
| 4 | XX | TERMINAL, SOLDER TAIL | BRASS | TIN PLATE |
| 3 | XX | SCREW/WSHR #6-32X.250 PAN, PH-SL (-50) | STEEL (B) | ZN, CLEAR CHROMATE |
| 2 | XX | SCREW #6-32X.250 BHD, PH-SL (STD.) | STEEL (B) | ZN, CLEAR CHROMATE |
| 1 | 1 | BARRIER TERMINAL STRIP | (B) POLYESTER (PBT) | BLACK |

UPDATE MAT. DESCRIPT.
 EC NO: WNA2009-0085
 DRWN: ENC INAS 2008/11/25
 CHKD: CYORK 2008/12/15
 APPR: JMACNEIL 2008/12/15

QUALITY SYMBOLS
 ▽=0
 ▽=0

| | GENERAL TOLERANCES (UNLESS SPECIFIED) | |
|--------------|---------------------------------------|--------|
| | mm | INCH |
| 4 PLACES | ± --- | ± --- |
| 3 PLACES | ± --- | ± .005 |
| 2 PLACES | ± 0.13 | ± .01 |
| 1 PLACE | ± 0.3 | ± --- |
| ANGULAR ± 2° | | |

DRAFT WHERE APPLICABLE MUST REMAIN WITHIN DIMENSIONS

DIMENSION STYLE
MM/IN

SCALE
2:1

DESIGN UNITS
INCH

THIRD ANGLE PROJECTION

DRAWN BY
 R. STONE

DATE
 2003/03/25

CHECKED BY
 R. KEMP

DATE
 2003/03/26

APPROVED BY
 P. WALTZ

DATE
 2003/03/28

MATERIAL NO.
SEE CHART

TITLE
**11.13/.438" BTS 600V
 SOLDER TAIL, NO MTG ENDS
 (63A2XX-C)**

MOLEX INCORPORATED

DOCUMENT NO.
SD-38630-004

SHEET NO.
1 OF 1

THIS DRAWING CONTAINS INFORMATION THAT IS PROPRIETARY TO MOLEX INCORPORATED AND SHOULD NOT BE USED WITHOUT WRITTEN PERMISSION