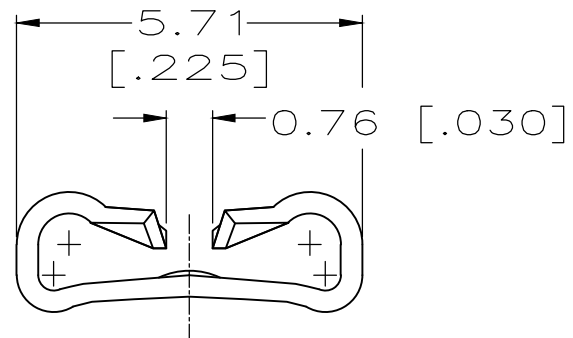
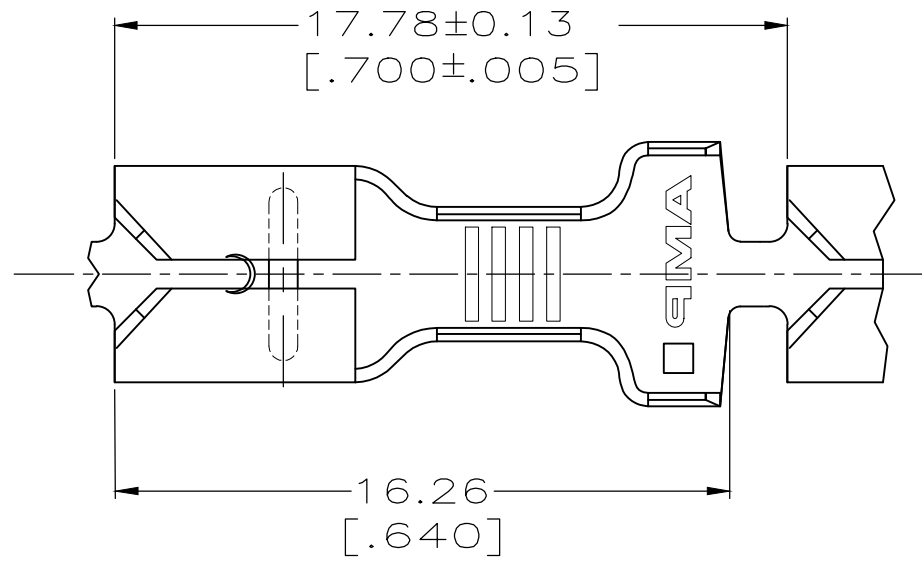


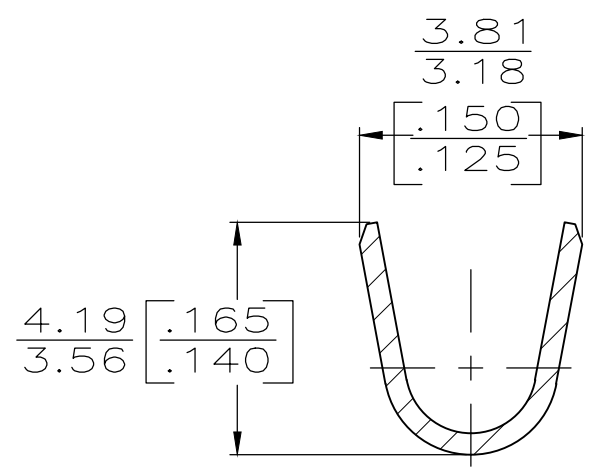
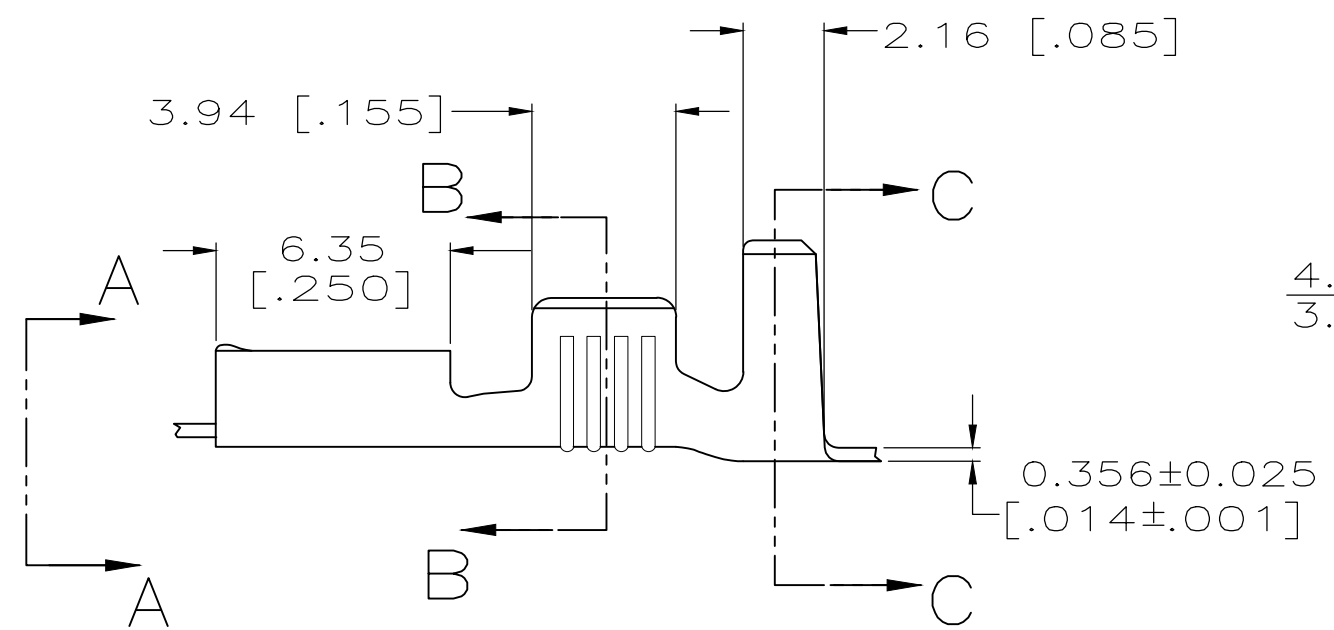
THIS DRAWING IS UNPUBLISHED. RELEASED FOR PUBLICATION
 © COPYRIGHT - By - ALL RIGHTS RESERVED.

| LOC | DIST | REVISIONS | | | |
|-----|------|-------------|---------------------------|-----------|-------|
| P | LTR | DESCRIPTION | DATE | DWN | APVD |
| AF | 50 | E | REVISED PER ECR-12-013518 | 24NOV12 | KH PD |
| | | E1 | REVISED PER ECR-20-002506 | 24FEB2020 | MK TD |

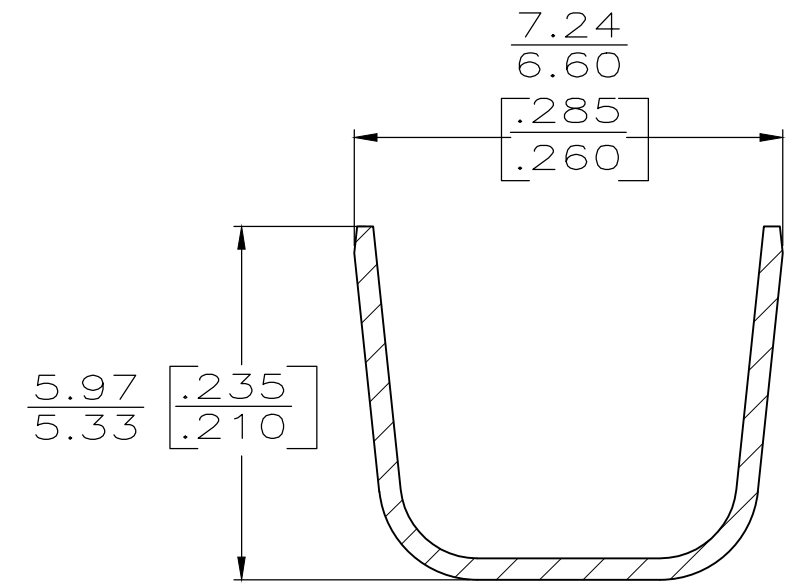
- 1 CONTINUOUS STRIP ON REELS.
 - 2 MATING TAB THK TO BE 0.635 ± 0.025 [.025 ± .001]
 - 3 WIRE SIZE IS [#18-#14]AWG, OR TWO [#16'S].
 - 4 INSULATION RANGE IS 4.57-5.84 TWO AT 2.79 MAX, [.180-.230] OR TWO AT [.110 MAX].
- 5 OBSOLETE PARTS: OBSOLETE CIS STREAMLINING PER D.RENAUD/D.SINISI



VIEW A-A
SCALE 8:1



SECTION B-B
SCALE 8:1



SECTION C-C
SCALE 8:1

| | | |
|------------|--------|-------------|
| 5 OBSOLETE | TIN | 63832-2 |
| | - | 63832-1 |
| | FINISH | PART NUMBER |

| | | | | | | | |
|---|--|-------------------|------------|--|-----------------|------------------|---------------------|
| THIS DRAWING IS A CONTROLLED DOCUMENT. | | DWN | JR RUTH | 3/17/95 | TE Connectivity | | |
| DIMENSIONS: mm [INCHES] | | CHK | MS FEHER | 3/17/95 | | | |
| TOLERANCES UNLESS OTHERWISE SPECIFIED: | | APVD | P DESANTIS | 3/17/95 | NAME | | |
| 0 PLC ± - 1 PLC ± - 2 PLC ± 0.25 [.010] 3 PLC ± - 4 PLC ± - ANGLES ± - | | PRODUCT SPEC | | RECEPTACLE, FASTON,™ 4.75 [.187] SERIES | | | |
| MATERIAL: BRASS | | FINISH: SEE TABLE | | APPLICATION SPEC: 114-2036 | | RESTRICTED TO: - | |
| CUSTOMER DRAWING | | | | WEIGHT: - | SIZE: A3 | CAGE CODE: 00779 | DRAWING NO: C-63832 |
| | | | | SCALE: 5:1 | SHEET: 1 OF 1 | REV: E1 | |