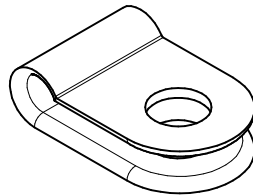
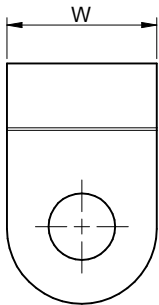
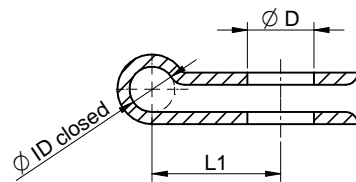
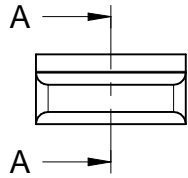


Order Code	L1 (mm)	W (mm)	ØD (mm)	ØID closed (mm)
500 911 500	8.5 ± 0.3	9.9 ± 0.3	4.4 ± 0.3	3.0 ± 0.3
500 914 000	10.5 ± 0.3	9.5 ± 0.3	5.0 ± 0.3	7.6 ± 0.3
500 914 500	12.0 ± 0.3	9.5 ± 0.3	3.2 ± 0.3	8.3 ± 0.3
500 915 000	12.4 ± 0.3	9.5 ± 0.3	4.8 ± 0.3	9.0 ± 0.3
500 916 000	14.8 ± 0.3	12.5 ± 0.3	4.9 ± 0.3	11.5 ± 0.3

sectional drawing A-A



Scale - 2:1

Operating Temperatur: -30°C up to +85°C

				Würth Elektronik eiSos GmbH & Co. KG EMC & Inductive Solutions	CREATED DaF	CHECKED SKI	GENERAL TOLERANCE DIN ISO 2768-1m	PROJECTION METHOD		SIZE A4
				Max-Eyth-Str. 1 74638 Waldenburg Germany com. +49 79 42 945 - 0	DESCRIPTION <b>AsCHCL Cable Clip</b>			TECHNICAL REFERENCE	MATERIAL Nylon 66, natural	
				www.we-online.de eiSos@we-online.de	SIZE xxx xxx xxx	WEIGHT	STATUS Released	DATE 2016-09-01	BUSINESS UNIT eiCan	PAGE 1 / 1
REV.	FILE	DATE	BY		ORDER CODE 500 91x x00					

