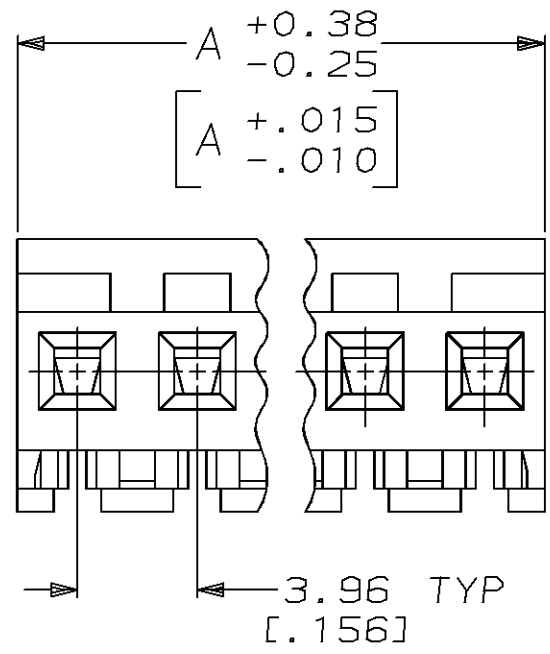
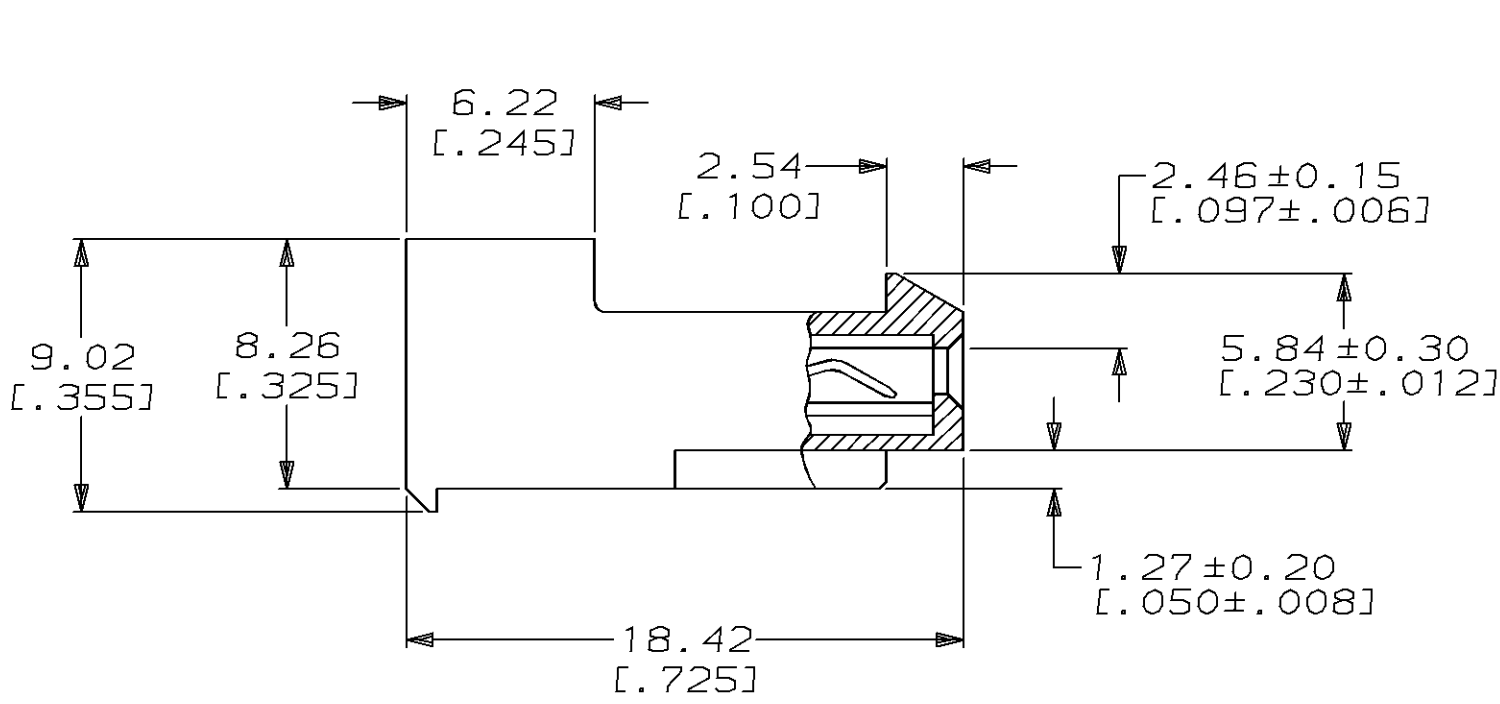
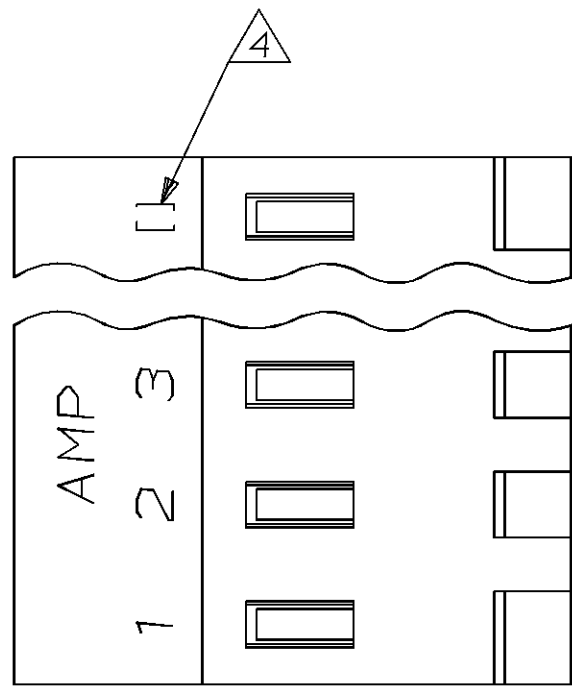


THIS DRAWING IS UNPUBLISHED. RELEASED FOR PUBLICATION ,19 .
 © COPYRIGHT 19 BY AMP INCORPORATED. ALL INTERNATIONAL RIGHTS RESERVED.

| LOC | DIST | P | F | ZONE | LTR | REVISIONS | DATE | APPD |
|-----|------|---|---|------|-----|---|---------|----------|
| CM | 54 | | | | M | REACT -13 THRU -24 AND REV PER EC 0730-0242-95 | 3-11-96 | BL RS |



| | | | |
|-------|---------|----|------------|
| 95.10 | [3.744] | 24 | 2-641218-4 |
| 91.14 | [3.588] | 23 | 2-641218-3 |
| 87.17 | [3.432] | 22 | 2-641218-2 |
| 83.21 | [3.276] | 21 | 2-641218-1 |
| 79.25 | [3.120] | 20 | 2-641218-0 |
| 75.29 | [2.964] | 19 | 1-641218-9 |
| 71.32 | [2.808] | 18 | 1-641218-8 |
| 67.36 | [2.652] | 17 | 1-641218-7 |
| 63.40 | [2.496] | 16 | 1-641218-6 |
| 59.44 | [2.340] | 15 | 1-641218-5 |
| 55.47 | [2.184] | 14 | 1-641218-4 |
| 51.51 | [2.028] | 13 | 1-641218-3 |
| 47.55 | [1.872] | 12 | 1-641218-2 |
| 43.59 | [1.716] | 11 | 1-641218-1 |
| 39.62 | [1.560] | 10 | 1-641218-0 |
| 35.66 | [1.404] | 9 | 641218-9 |
| 31.70 | [1.248] | 8 | 641218-8 |
| 27.74 | [1.092] | 7 | 641218-7 |
| 23.77 | [.936] | 6 | 641218-6 |
| 19.81 | [.780] | 5 | 641218-5 |
| 15.85 | [.624] | 4 | 641218-4 |
| 11.89 | [.468] | 3 | 641218-3 |
| 7.92 | [.312] | 2 | 641218-2 |

- ① MATERIAL: CONNECTOR - NYLON UL94V-2 (YELLOW).
 CONTACTS - 0.30 [.012] THICK COPPER ALLOY
 (0.00076 [.000030] GOLD)
2. CONTACTS ACCEPT 20 AWG WIRE WITH 2.41 [.095] MAX INSULATION DIAMETER.
3. CONTACTS MUST ACCEPT 1.14±0.03 [.045±.001] SQUARE POST AND REMAIN LOCKED IN POSITION.
- ④ IDENTIFICATION NUMBER FOR LAST CIRCUIT MAY NOT APPEAR ON ALL ASSEMBLIES.
5. DIMENSIONS IN BRACKETS ARE IN INCHES.
6. HOUSING FEATURES ARE: CLOSED END WITH LOCKING RAMP.

| | | DIM A | NO OF CIRCUITS | PART NO |
|--|--|---|----------------|--------------|
| DO NOT SCALE PRINT. UNLESS SPECIFIED DIMENSIONS IN mm [INCHES] TOLERANCES ON : 2 PLC DEC ± - 3 PLC DEC ± 0.13 [.005] ANGLES ± - | | AMP Incorporated Harrisburg, PA 17105-3608 | | |
| MATERIAL ① | | NAME MTA-156 CONNECTOR ASSEMBLY, 20 AWG, STANDARD | | |
| FINISH ① | | SIZE | CAGE CODE | DRAWING NO |
| | | ③ | 00779 | 641218 |
| | | SCALE | 4:1 | SHEET 1 OF 1 |

METRIC