

PART NUMBER	REV	FEED TYPE	DESCRIPTION	PROGRAMMED MEMORY CHIP
2151002-1	A	MECHANICAL	FINE CRIMP HEIGHT ADJUST	-
2151002-2	A	PNEUMATIC	FINE CRIMP HEIGHT ADJUST	-
2151002-5	A	SERVO	FINE CRIMP HEIGHT ADJUST	8-2151002-5
2151002-6	A	SERVO	NON-CRIMP HEIGHT ADJUST	8-2151002-6
7-2151002-7	A	-	SPARE PARTS KIT	-

SUPERSEDED BY 2151496-1
 SUPERSEDED BY 2151496-2
 SUPERSEDED BY 2151496-5
 SUPERSEDED BY 2151496-6

APPLICATOR DATA		
CRIMP	SIZE	TYPE
WIRE	1.40 mm [.055]	F
INSUL	1.57 mm [.062]	O
APPL INSTRUCTIONS 408-10389		

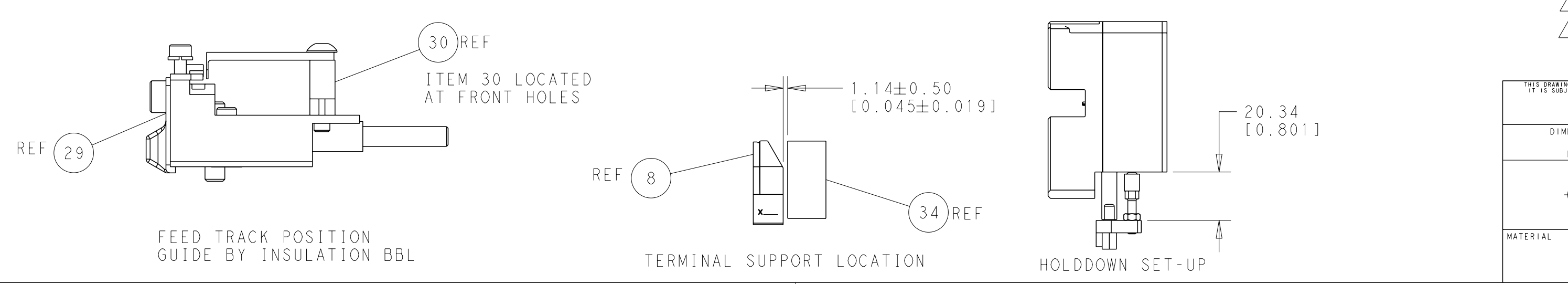
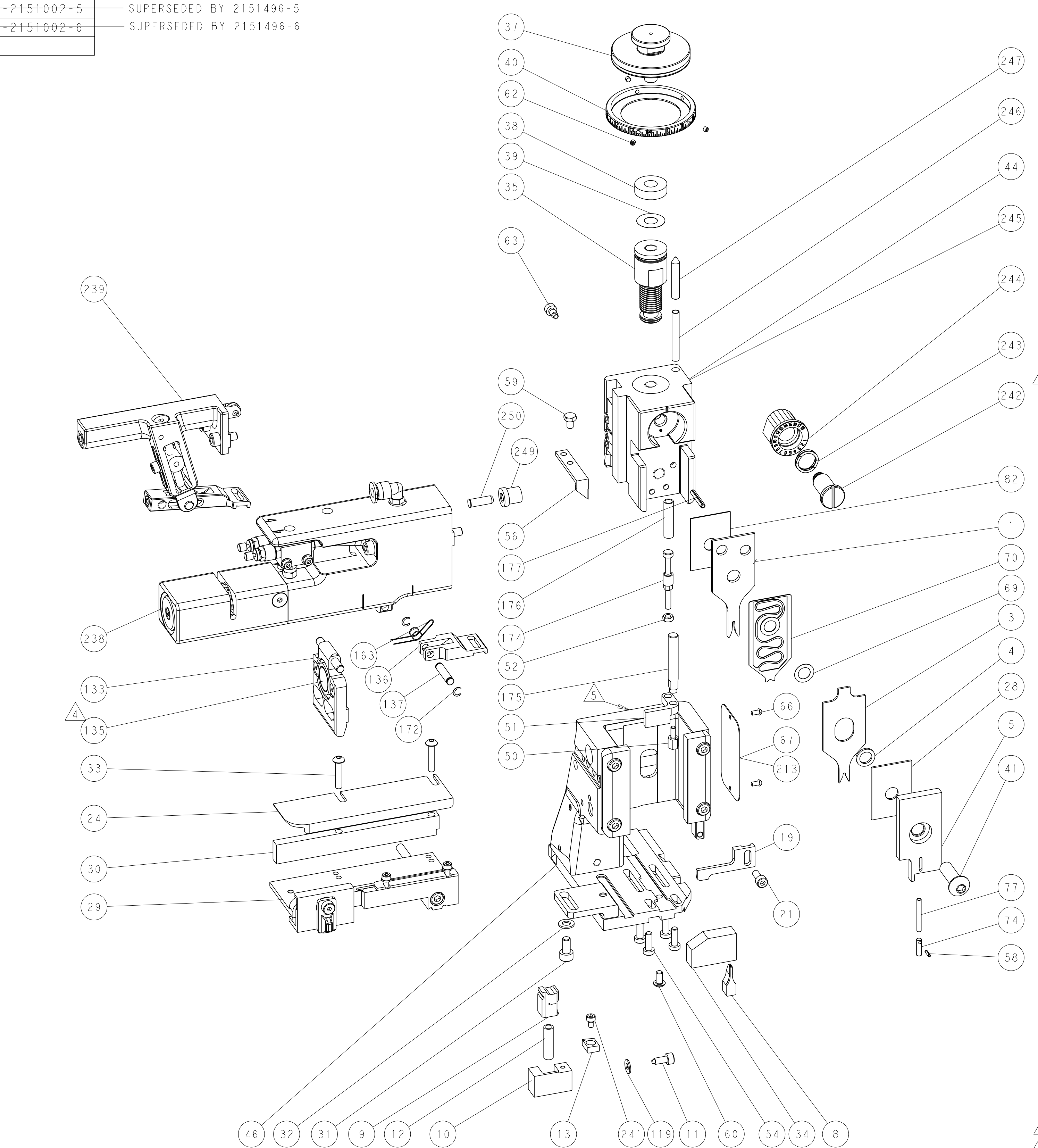
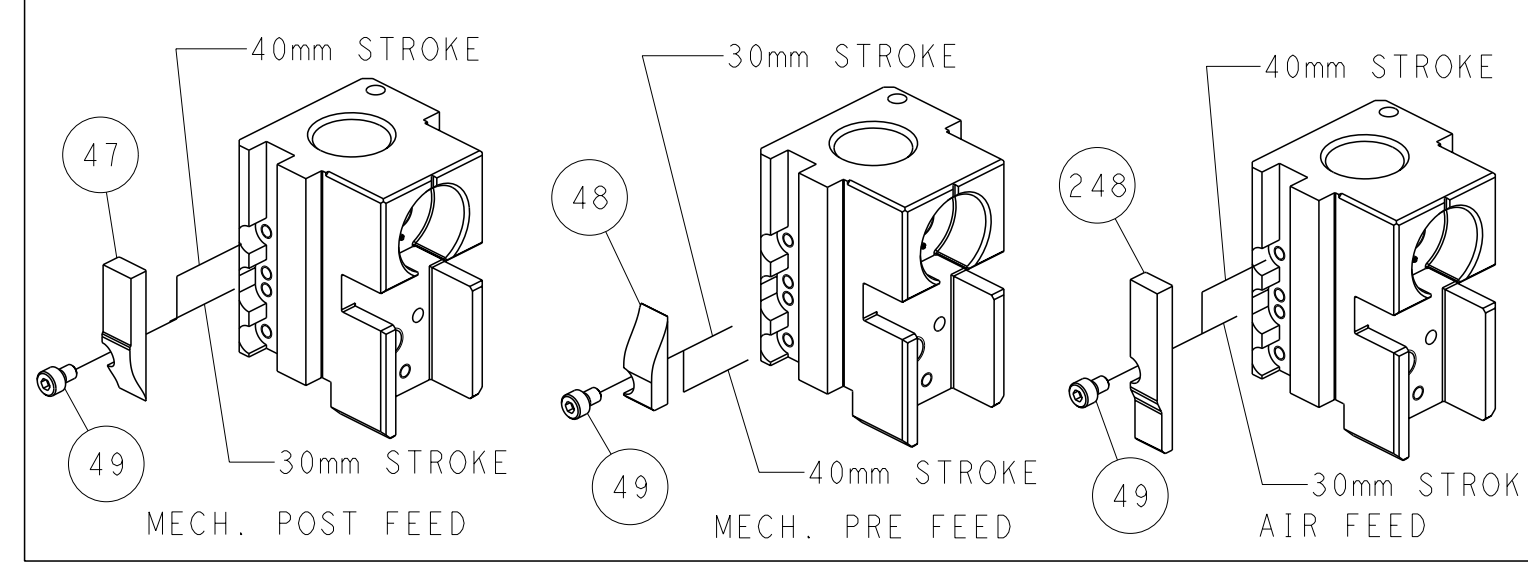
TERMINAL DATA: TE TERMINAL		T CRIMP SPEC	
TERMINAL NAME: PIN CONTACT, SIZE 20 DF			
WIRE STRIP LENGTH	INSULATION DIAMETER RANGE		
2.14-2.64 mm [.084-.104 IN]	Ø1.27-1.52 mm [.050-.060 IN]		
TERMINAL APPL SPEC	114-10000 REV T		

TERMINALS APPLIED			
TE TERMINAL	TE TERMINAL	TE TERMINAL	TE TERMINAL
66506-1	1-66506-0	66504-1	1-66504-0
66506-2	5-66506-3	66504-2	1-66504-2
66506-3	6-66506-1	66504-3	6-66504-8
66506-4	6-66506-5	66504-4	7-66504-0
66506-8	6-66506-6	66504-8	7-66504-5
66506-9	166053-1	66504-9	166051-1

WIRE SIZE	CRIMP HEIGHT mm [INCH]	FINE ADJUST REF SETTING*
24 AWG	0.81±0.000 [.032±.000]	9.2
22 AWG	0.81±0.000 [.032±.000]	9.2
20 AWG	0.81±0.000 [.032±.000]	9.2

- RECOMMENDED SPARE PARTS
- GREASE BEARING SURFACES LIGHTLY
- LUBRICATE DAILY PER THE APPLICATOR INSTRUCTION SHEET SUPPLIED WITH THE APPLICATOR.
- APPLICATOR SPECIFIC DATA TO BE ENTERED INTO BLANK MEMORY CHIP AT ASSEMBLY.
- TO CONVERT THE APPLICATOR TO A NON-CARRIER CUTTING STYLE, REMOVE ITEM 13 AND ATTACH TO THE LOCATION INDICATED.
- POSITIONAL ADJUSTMENTS OF THE STRIPPER MAY BE REQUIRED WHEN MOVING THE APPLICATOR BETWEEN BENCH AND LEADMAKER APPLICATIONS.
- FOR THE ASIAN VERSION OF THIS APPLICATOR, SEE LOG 2151002-9

PART REQUIRED FOR FEED CONVERSIONS		
FEED VER. TO CONVERT TO	RETROFIT KIT	ADDITIONAL PARTS REQ'D
MECHANICAL	2119949-1	56
PNEUMATIC	2119950-1	56
SERVO	2119951-1	135



SERVO FEED FINGER	SETUP GUAGE	LOC	DIST	REVISIONS					
2119944-1	2119599	A	66	P	LTB	DESCRIPTION	DATE	DWN	APVD
				A		ORIGINAL	18OCT2010	GH	GB
				B		ECR-11-021773	26OCT2011	BW	GB

-	-	-	1	-	2119640-1	PUSH ROD, AIR FEED			250
-	-	-	1	-	2079988-1	BUSHING, LCH5-12, MISUMI			249
-	-	-	1	-	2119641-1	FEED CAM, AIR FEED			248
-	-	-	1	1	2119798-1	DETENT PIN			247
-	-	-	1	1	1-22279-3	SPRING, COMPRESSION			246
-	1	-	-	-	2119758-1	RAM, AMP STYLE, SIDE FEED, NON-ADJ.			245
-	1	1	1	1	2119082-9	CAM, SNAIL, INSULATION ADJUSTMENT			244
-	1	1	1	1	2079764-1	WASHER, WAVE SPRING, CREST-TO-CREST			243
-	1	1	1	1	2119083-1	RETAINER, INSULATION DIAL			242
-	1	1	1	1	18023-1	SCR, SKT HD CAP M3 X 5.0			241
-	-	-	-	-	2119580-1	MECHANICAL FEED ASSEMBLY			239
-	-	-	-	-	2063440-1	AIR FEED MODULE			238
-	1	1	-	-	2119740-2	TAG, IDENTIFICATION			213
-	1	1	1	1	993111-1	PIN, SLOTTED SPRING 3.0 X 20.0			177
-	1	1	1	1	8-22280-7	SPRING, COMPRESSION			176
-	1	1	1	1	1752353-1	GUIDE PIN, HOLDDOWN			175
-	1	1	1	1	1901680-1	GUIDE PIN, HOLDDOWN			174
-	-	-	-	-	21045-3	RING, RETAIN, EXTERN, 3/16 CRESCENT			172
-	-	-	-	-	240638-1	SPRING, FEED FINGER			163
-	-	-	-	-	3-23627-7	PIN, RETAIN, GRVD, 3/16 X .854			137
-	-	-	-	-	2119799-1	HOLDER, FEED FINGER, AF			136
-	REF	REF	-	-	SEE TABLE	MEMORY CHIP, PROGRAMMED			135
-	1	1	-	-	1633743-1	SERVO FEED LATCH ASM			133
-	1	1	1	1	1-18028-2	WASHER, FLAT, REG M4			119
-	1	1	1	1	455888-5	SPACER, CRIMPER			82
-	1	1	1	1	5-547505-2	SPRING, COMPRESSION			77
-	1	1	1	1	854769-5	HOLDER, INS			74
-	1	1	1	1	2119956-1	DOCUMENTATION PACKAGE			71
-	1	1	1	1	2119791-5	DEPRESSOR, WIRE			70
-	1	1	1	1	2119943-1	WASHER, SPACER			69
-	-	-	-	-	2119740-1	TAG, IDENTIFICATION			67
-	2	2	2	2	21017-2	SCREW, DRIVE			66
-	-	-	-	-	2119793-1	LIMITER, ADJUSTMENT BOLT			63
-	-	3	3	3	992763-4	SCR, SET, SOC, CONE POINT, M3 x 3.0			62
-	1	1	1	1	2079383-4	SCR, BHSC, RoHS (M4 X 8)			60
-	-	-	-	-	5-18022-5	SCR, HEX HD CAP, M4 X 6.0			59
-	1	1	1	1	21028-2	PIN, SLOTTED SPRING .062 X .250			58
-	-	-	-	-	1338685-1	PAWL, FEED			56
-	4	4	4	4	2168084-1	SHCS, LOW HEAD, RoHS, M4 X 12			54
-	1	1	1	1	1-5018030-0	NUT, HEX, REG, RoHS, M3.5			52
-	1	1	1	1	1901681-1	HOLDDOWN, TERMINAL			51
-	1	1	1	1	1-1752354-2	STANDOFF, HOLD-DOWN			50
-	-	-	-	-	18023-9	SCR, SKT HD CAP M4 X 6.0			49
-	-	-	-	-	2119652-1	FEED CAM, PRE FEED			48
-	-	-	-	-	2119653-1	FEED CAM, POST FEED			47
-	1	1	1	1	2119656-9	APPLICATOR BASIC ASSEMBLY, SF			46
-	-	-	-	-	2119370-1	RAM, AMP STYLE, SIDE FEED			44
-	1	1	1	1	2079383-7	SCR, BHSC, RoHS (M8 X 25)			41
-	-	-	-	-	2119645-1	DISC, NUMBERED FA WIRE ADJUSTMENT			40
-	1	1	1	1	2119957-1	APPLICATOR SHIM PACK			39
-	1	1	1	1	2119644-1	RAM WASHER, PRECISION			38
-	1	1	1	1	2119085-1	FA HEAD, ATLANTIC STYLE			37
-	-	-	-	-	2119092-1	BOLT, ADJUSTMENT			35
-	1	1	1	1	1752356-1	SUPPORT, TERMINAL			34
-	2	2	2	2	2079383-5	SCR, BHSC, RoHS (M4 X 20)			33
-	1	1	1	1	1-18028-3	WASHER, FLAT, REG M5			32
-	1	1	1	1	2168083-4	SCR, SKT HD CAP, RoHS, M5 X 10.0			31
-	1	1	1	1	1320908-6	SPACER, STRIP GUIDE			30
-	1	1	1	1	1901087-2	ASSEMBLY, STRIP GUIDE			29
-	1	1	1	1	1-455888-0	SPACER, CRIMPER			28
-	1	1	1	1	1320928-2	PLATE, STRIP GUIDE			24
-	1	1	1	1	1-2168083-0	SCR, SKT HD CAP, RoHS, M4 X 10			21
-	1	1	1	1	2119533-1	STRIPPER, SIDE FEED			19
-	1	1	1	1	2119806-1	INSERT, SHEAR			13
-	1	1	1	1	3-22280-3	SPRING, COMPRESSION			12
-	1	1	1	1	1-356885-4	STOP, SHEAR			11
-	1	1	1	1	2119805-1	SHEAR HOLDER, FRONT			10
-	1	1	1	1	462006-6	FLOATING SHEAR, FRONT			9
-	1	1	1	1	1338690-9	ANVIL, COMBINATION .055			8
-	1	1	1	1	2119780-9	DEPRESSOR, SHEAR			5
-	1	1	1	1	2-238011-0	BLOCK, CRIMPER SPACER			4
-	1	1	1	1	1633966-1	CRIMPER, INSULATION O			3
-	1	1	1	1	1-456402-5	CRIMPER, WIRE PREMIUM			1

DIMENSIONS:		TOLERANCES UNLESS OTHERWISE SPECIFIED:		DWG		REV	
mm	9 PLC ±	PLC	±	HOFFNER	18OCT2010	CH	19OCT2010
	1 PLC ±	PLC	±	G. BALLEY		APVD	19OCT2010
	5 PLC ±	PLC	±	Tyco Electronics Corporation			
	4 PLC ±	PLC	±	Harrisburg, PA 17105-3608			
	ANGLES	FINISH	±	Ocean Side Feed AMP Style Applicator			
MATERIAL				SIZE	CAGE CODE	DRAWING NO	RESTRICTED TO
				A	00779	C-2151002	
CUSTOMER ACCESSIBLE PRODUCTION DRAWING				SCALE	1:2	SHEET	1 OF 1
				REV	B		