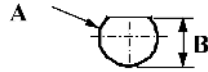


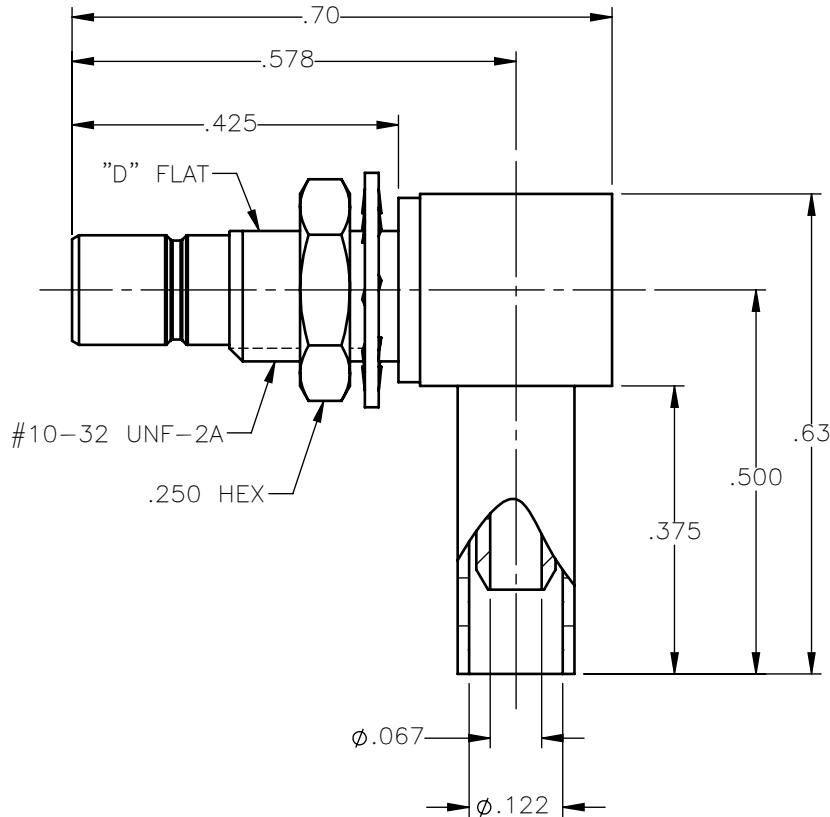
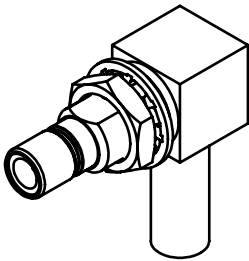
REVISIONS

REV.	DESCRIPTION	DATE	APPROVED
A	INITIAL RELEASE	04/11/18	C.E.

**PANEL CUT OUT**



inches		
	Maxi	mini
<b>A</b>	<b>.198</b>	<b>.192</b>
<b>B</b>	<b>.183</b>	<b>.177</b>



NOTES:

MATERIALS:

1. INSULATORS = VIRGIN WHITE TEFLON PER ASTM D1710, GRADE 1, TYPE I, CLASS "B".
2. CRIMP SLEEVE = SEAMLESS LOWLEAD BRASS TUBE, ALLOY 330, SOFT ANNEAL TEMPER, .025/.060 GRAIN SIZE OR SEAMLESS COPPER TUBE PER ASTM B75, TYPE C12000, TEMPER: LIGHT ANNEAL O50 EXCEPT YIELD STRENGTH.
3. LOCKWASHER = PHOSPHOR BRONZE PER ASTM B139, COPPER ALLOY C53400, TEMPER H04.
4. ALL OTHER METAL PARTS = BRASS PER ASTM B16, ALLOY C36000, TEMPER H02.

FINISHES:

1. CONTACT = GOLD PLATE PER ASTM B488-11, TYPE II, 50µin MIN, GRADE C, OVER 100 TO 200µin STRESS FREE SULFAMATE NICKEL PER AMS-QQ-N-290.
2. ALL OTHER METAL PARTS = GOLD PLATE PER ASTM B488-11, TYPE II, 30µin MIN, GRADE C OVER 100 TO 200µin COPPER STRIKE PER AMS 2418.

UNLESS OTHERWISE SPECIFIED DIMENSIONS ARE IN INCHES TOLERANCES ON

DWN:	DATE
C.E.	04/11/18
CHKD:	DATE
D.N.	04/11/18
APVD:	DATE
J.M.	04/11/18



Property of Radiall  
This document cannot be reproduced or communicated to a third party without prior written permission of RADIALL.



**SMB RIGHT ANGLE MALE JACK BULKHEAD MOUNT CRIMP TYPE FOR RG-316 & SIMILAR CABLES**

REFERENCE:	MATERIALS & FINISHES:
ORIGINATED: C.E. DATE: 04/11/18	SEE NOTES

SIZE <b>A</b>	FSCM NO. 19505	DWG NO. <b>2106-1521-003</b>	REV <b>A</b>
SCALE 4:1		THIRD ANGLE PROJECTION	SHEET 1 OF 1

2106-1521-003