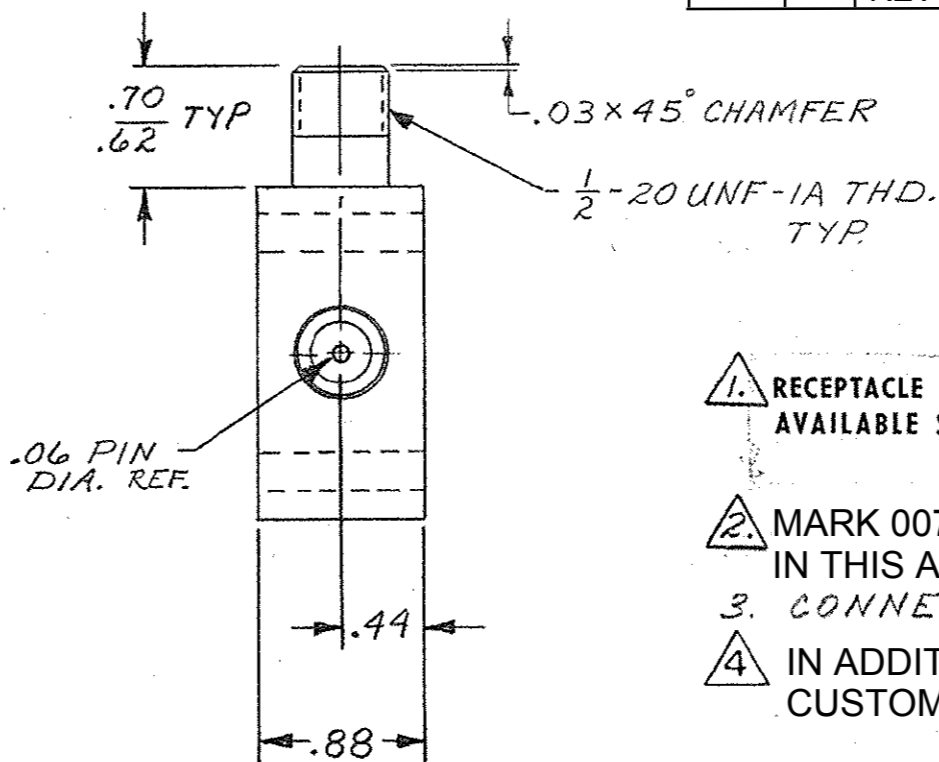
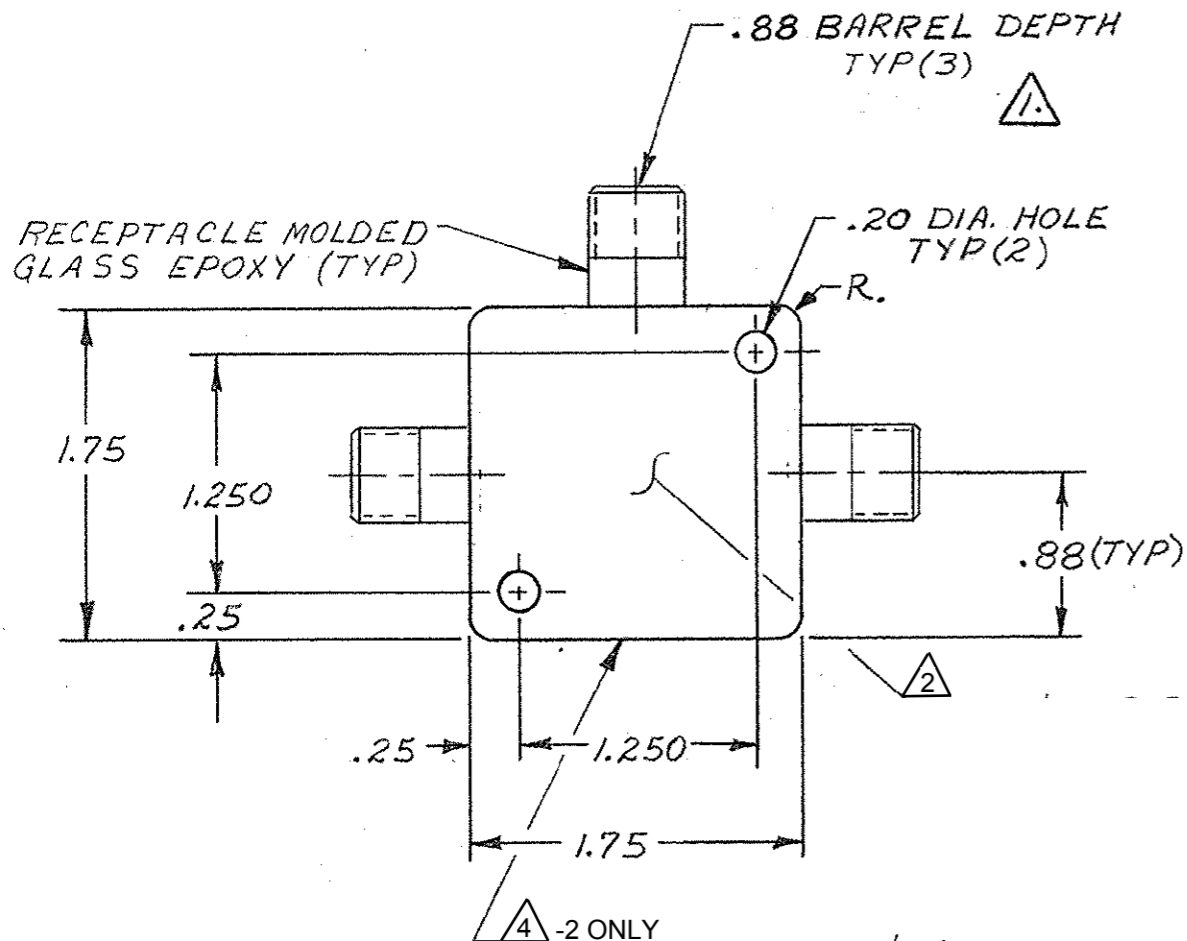


©1970 BY AMP INCORPORATED. ALL RIGHTS RESERVED. AMP PRODUCTS COVERED BY PATENTS AND/OR PATENTS PENDING.

THIS PRODUCT DESIGNED AND BUILT BY AMP INCORPORATED. NO LICENSE TO USE THAT DESIGN IN MANUFACTURE, OR TO USE ANY ISSUED OR PENDING PATENTS WHICH ARE INVOLVED, IS IMPLIED.

REVISIONS				
ZONE	LTR	DESCRIPTION	DATE	APPROVED
	T	REVISED & REDRAWN <i>LL</i>	9-4-70	<i>Ken K</i>
	U	MATERIAL WAS- EPOXY. <i>CD</i>	9-12-72	<i>Ken K.</i>
4-C	V	ADDED R. <i>DEC</i>	10-18-72	<i>Ken K.</i>
	W	UP-DATED ECN 8331 R.G.R.	7/28/78	<i>gws</i>
	Y	REV PER ECN 5-3960	4/16/87	<i>RS</i>
	Z	REV PER OH14-0192-05	1-06	<i>PY</i>
	AA	REV PER ECO-16-007494	01JUN16	<i>DM</i>



- 1. RECEPTACLE TO MATE WITH AMP LGH-1 LEAD ASSEMBLY. AVAILABLE SEPARATELY.
- 2. MARK 00779, AMP, TE PART NUMBER, AND DATE CODE IN THIS APPROXIMATE AREA.
- 3. CONNECTOR IS COMMON.
- 4. IN ADDITION TO MARKING PER NOTE 2, MARK CUSTOMER PART NUMBER 18323-990C181H01.

5-836674-1	AS SHOWN WITH TIN PLATED PINS
836674-2	AS SHOWN WITH GOLD PLATED PINS
836674-1	AS SHOWN WITH TIN-LEAD PLATED PINS

QTY REQD	QTY REQD	ITEM NO.	DWG SIZE	PART OR IDENTIFYING NO.	NOMENCLATURE OR DESCRIPTION	SYMBOL
-2	-1					

UNLESS OTHERWISE SPECIFIED: DIMENSIONS ARE IN INCHES TOLERANCES .00 ± .02 ANGLES ± .000 ± .005				CONTRACT NO. DR C. DORWART 9-18-64	 AMP INCORPORATED CAPITRON DIVISION ELIZABETHTOWN, PENNSYLVANIA
MATERIAL: MOLDED GLASS EPOXY				CHK	
FINISH: RED				APPD	NAME LGH-1 "T" CONNECTOR
NEXT ASSY				APPD	SIZE B
FINAL ASSY				DSGN APPD	CODE IDENT NO. 89110
NEXT ASSY				OTHER APPD	NUMBER 836674
USED ON					SCALE N.T.S.
QTY REQD					WT
APPLICATION					SHEET 1 OF 1

PRINT DIST 37

UPDATED