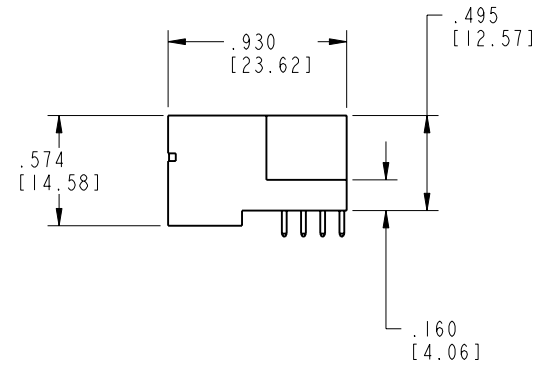
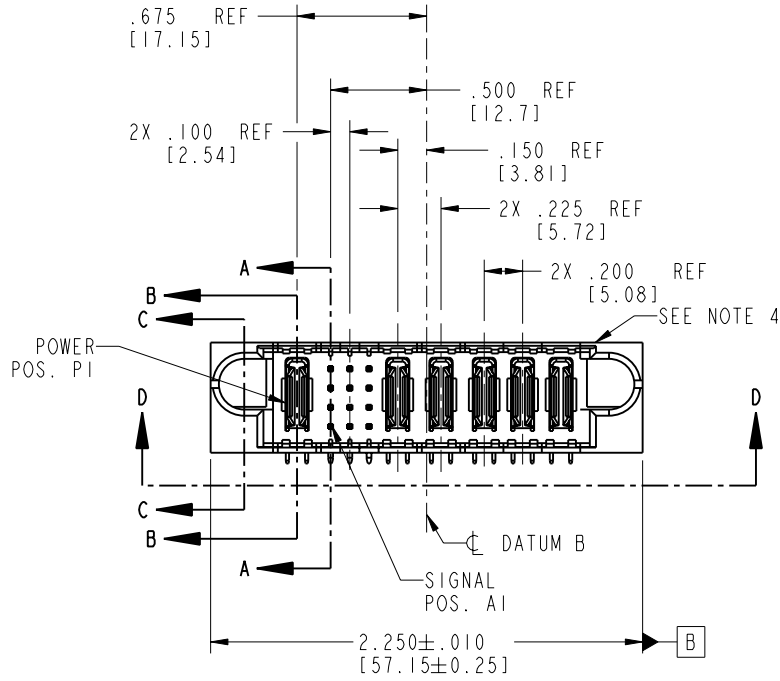


Tous droits strictement réservés. Reproduction ou communication o des liens interdite sous quelque forme que ce soit sans autorisation écrite du propriétaire. Propriété de c FCI. Droits de reproduction FCI.

All rights strictly reserved. Reproduction or issue to third parties in any form whenever is not permitted without written authority from the proprietor. Property of FCI. Copyright FCI.

PRODUCT NO.	ROWS		PWR			SIGN			PWR			
		E1	P1	1	2	3	P2	P3	P4	P5	P6	E2
51939-012-- NOTE: 3	D C B A		PA	UUU SSS RRR	UUU SSS RRR	UUU SSS RRR	PA	PA	PA	PA	PA	



CODE	DIM "M" MATING LENGTH	CONTACT TYPE
R	.270 [6.86]	SIGNAL
S	.270 [6.86]	SIGNAL
T	.270 [6.86]	SIGNAL
U	.270 [6.86]	SIGNAL
PA	N/A [N/A]	POWER

mat'l code				SEE NOTE 2		tolerances unless otherwise specified		CUSTOMER		 www.fciconnect.com	
ltr	ecn no.	dr	date	linear	.XX±.01/0.X±0.3		COPY		 INCH/MM	title	
A	V20654	DAI	04/04/02		.XXX±.005/0.XXX±0.13		projection			IP + 12S + 5P	
B	DG06-0008	JMG	01/07/06	angles	.XXX±.0020/0.XXX±0.051		 scale		RIGHT ANGLE SOLDER HEADER		
					0° ± 2°		1:1		product family		
				dr	D. INGRAM	04/04/02			PwrBlade		
				engr	M. MOSTOLLER	04/04/02			code		
				chr	M. MOSTOLLER	04/04/02			213		
				appd	M. MOSTOLLER	04/04/02			sheet		
sheet index		revision sheet		B	B	B	B			1 of 4	
		1	2	3	4						

Pro/E

cage code 22526

PDM: Rev:B

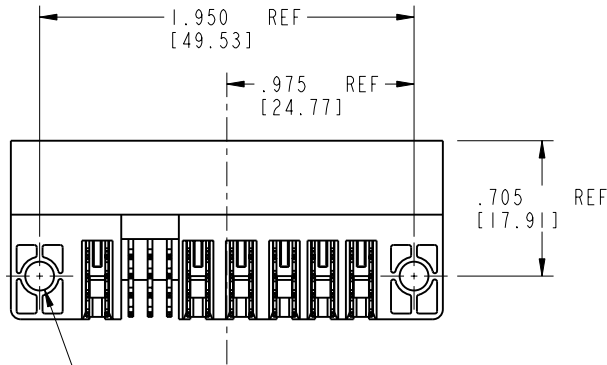
STATUS: Released

Printed: Oct 08, 2006

Tous droits strictement réservés. Reproduction ou communication o des liens interdite sous quelque forme que ce soit sans autorisation écrite du propriétaire. Propriete de c FCI. Droits de reproduction FCI.

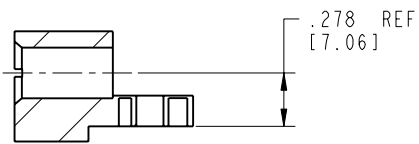
All rights strictly reserved. Reproduction or issue to third parties in any form, whatever is not permitted without written authority from the proprietor. Property of FCI. Copyright FCI.

PRODUCT NUMBER
51939-012--
NOTE: 3

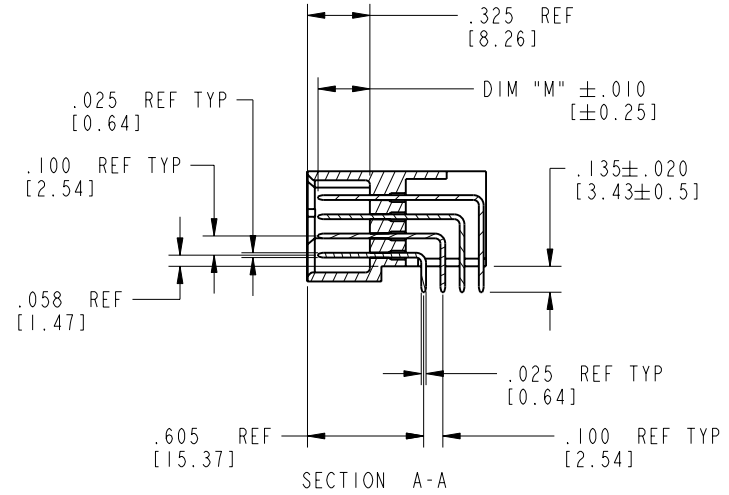


SECTION D-D

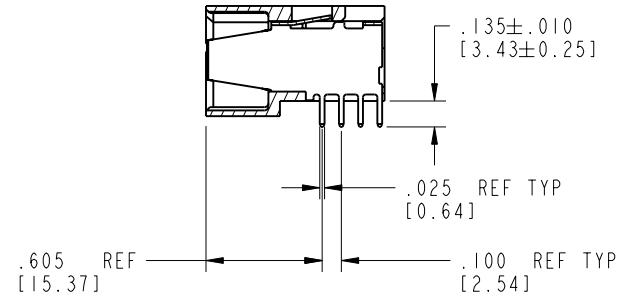
2X Ø.150 REF [3.81]



SECTION C-C



SECTION A-A



SECTION B-B

mat'l code SEE NOTE 2				tolerances unless otherwise specified		CUSTOMER	FCI www.fciconnect.com	
lfr	ecr no.	dr	date	linear	.XX±.01/0.X±0.3	COPY	title	IP + 12S + 5P
B					.XXX±.005/0.XXX±0.13	projection	RIGHT ANGLE SOLDER HEADER	
				angles	.XXX±.0020/0.XXX±0.051		product family	PwrBlade
				dr	D. INGRAM 04/04/02	INCH/MM	size	dwg no
				enr	M. MOSTOLLER 04/04/02	scale	A	51939-012
				chr	M. MOSTOLLER 04/04/02	1:1	code	213
				appd	M. MOSTOLLER 04/04/02		sheet	2 of 4
sheet index	revision sheet						cage code	22526

Pro/E

cage code 22526

PDM: Rev:B

STATUS: Released

Printed: Oct 08, 2006

Tous droits strictement réservés. Reproduction ou communication o des liens interdite sous quelque forme que ce soit sans autorisation écrite du propriétaire. Propriété de c FCI. Droits de reproduction FCI.

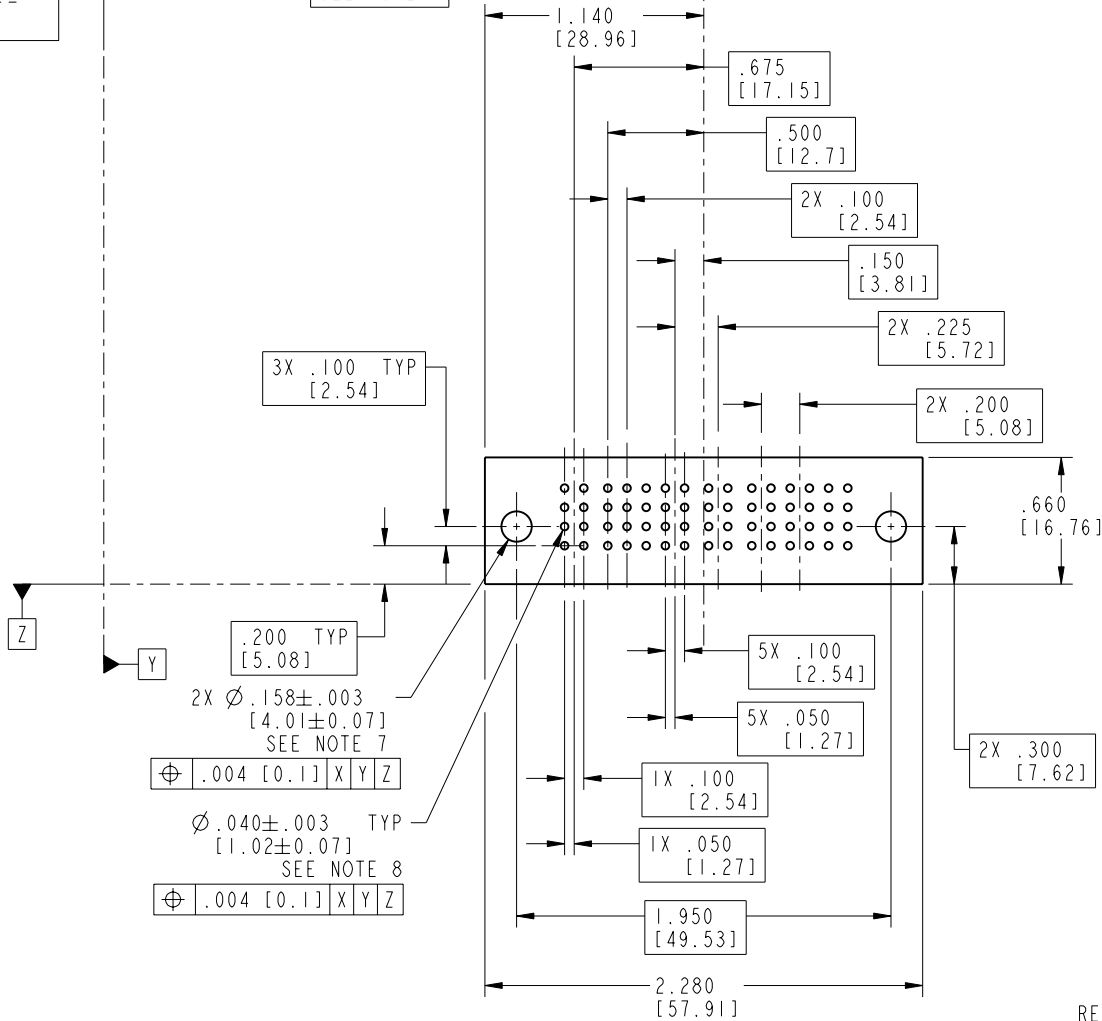
All rights strictly reserved. Reproduction or issue to third parties in any form, whatever is not permitted without written authority from the proprietor. Property of FCI. Copyright FCI.



PRODUCT NUMBER
51939-012--
NOTE: 3

DIM XXX
SEE NOTE 9

PCB LAYOUT ϕ



RECOMMENDED PCB LAYOUT

mat'l code		SEE NOTE 2		tolerances unless otherwise specified		CUSTOMER		 www.fciconnect.com	
lfr	ecn no.	dr	date	linear	.XX±.01/0.X±0.3	COPY		title	
B				linear	.XXX±.005/0.XX±0.13	projection		IP + 12S + 5P	
				angles	.XXX±.0020/0.XXX±0.051			RIGHT ANGLE SOLDER HEADER	
				dr	D. INGRAM 04/04/02	INCH/MM		product family	
				engr	M. MOSTOLLER 04/04/02			PwrBlade	
				chr	M. MOSTOLLER 04/04/02	scale		code	
				appd	M. MOSTOLLER 04/04/02	1:1		213	
sheet index		revision sheet						sheet	
								3 of 4	

cage code 22526

Pro/E

PDM: Rev:B

STATUS: Released

Printed: Oct 08, 2006

Tous droits strictement reserves. Reproduction ou communication o des liers interdite sous quelque forme que ce soit sans autorisation ecrite du proprietaire. Propriete de c FCI. Droits de reproduction FCI.



All rights strictly reserved. Reproduction or issue to third parties in any form, whatever is not permitted without written authority from the proprietor. Property of FCI. Copyright FCI.

PRODUCT NUMBER
51939-012--
NOTE: 3

NOTES:

1. DIMENSIONS AND TOLERANCES ARE IN ACCORDANCE WITH ASME Y14.5M, 1994 UNLESS OTHERWISE SPECIFIED.

CONNECTOR NOTES:

2. HOUSING MATERIAL: UL 94 V-0 GLASS FILLED HIGH-TEMP THERMOPLASTIC
POWER CONTACT MATERIAL: COPPER ALLOY
SIGNAL PIN MATERIAL: COPPER ALLOY

3. 51939-012;51939-012LF;51939-012GLF PLATING SPEC. SEE PRINT:10064183

4. "MANUFACTURER" NAME, P/N, AND DATE CODE TO APPEAR ON THIS SURFACE.

5. PRODUCT SPECIFICATION GS-12-149.

PCB NOTES:

6. ALL HOLE DIAMETERS ARE FINISHED HOLE SIZE.

7. HOLD DOWN THROUGH HOLES ARE UNPLATED.

8. $\varnothing .0453 \pm 0.0010$ [1.151 \pm 0.025] DRILLED HOLES PLATED WITH 0.0003 [0.008] MIN SnPb OVER .001 [0.03] TO .003 [0.08] Cu PLATING TO ACHIEVE $\varnothing .040 \pm .003$ [1.02 \pm .07] HOLE.

9. "DIM XXX" TO BE DETERMINED BY THE CUSTOMER.

mat'l code		SEE NOTE 2		tolerances unless otherwise specified		CUSTOMER		www.fciconnect.com	
ltr	ecn no.	dr	date	linear	.XX \pm .01/0.X \pm 0.3	COPY			
B				projection	.XXX \pm .005/0.XXX \pm 0.13			title	
				angles	.XXX \pm .0020/0.XXX \pm 0.051			IP + 12S + 5P	
				dr	D. INGRAM 04/04/02	INCH/MM		RIGHT ANGLE SOLDER HEADER	
				engr	M. MOSTOLLER 04/04/02	product family		PwrBlade	code
				chr	M. MOSTOLLER 04/04/02	size		dwg no	213
				appd	M. MOSTOLLER 04/04/02	scale		A	51939-012
						1:1		sheet	
sheet index	revision sheet							4 of 4	

cage code 22526