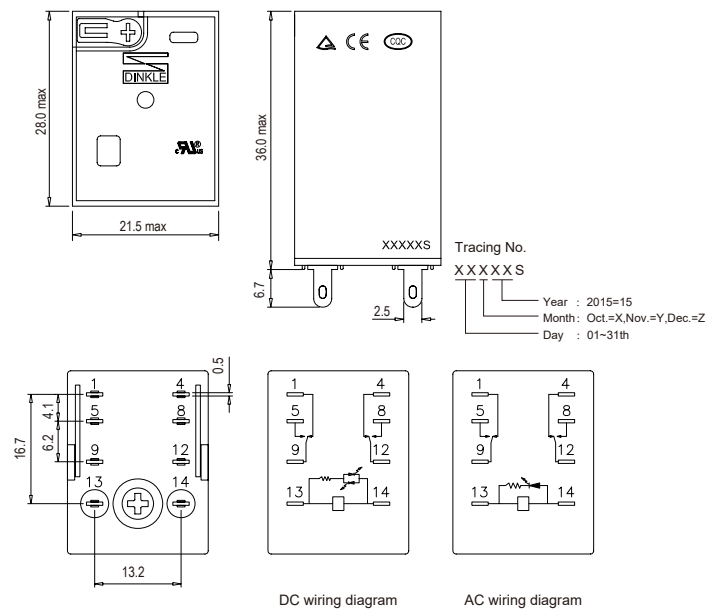


RER-S2C-XXXX

RER Series industrial Relay



Part Number Description

RER-S2C-XXXX

① ② ③

- ① S = Spec.
- ② 2C = No. of contacts
- ③ XXXX = Voltage
D24 = DC24V
A120 = AC120V
A230 = AC230V

Specification

Coil Characteristics			
Rated voltage	24VDC	120VAC	230VAC
Rated current	36.9mA	9.2mA	5.5mA
Coil resistance	640Ω±10%	4430Ω±15%	16500Ω±15%
Pull-in voltage (at 23°C)	18V(≤Rated voltage 75%)	96V(≤Rated voltage 80%)	184V(≤Rated voltage 80%)
Drop-out voltage (at 23°C)	2.4V(≥Rated voltage 10%)	36V(≥Rated voltage 30%)	69V(≥Rated voltage 30%)
Max. Allowable voltage (at 23°C)	26.4V(Rated voltage 110%)	132V(Rated voltage 110%)	253V(Rated voltage 110%)
Coil power consumption	0.9W	1.2VA	1.2VA
LED Status display	Green/DC	Red/AC	Red/AC
Contact Characteristics			
No. of contacts	2C		
Resistive load (AC-1)	10A/250VAC, 30VDC		
Motor load (AC-15)	1/3HP 120VAC, 1/2HP 240VAC		
Operating power (resistive)	2500VA, 300W		
Min. allowable load	10mA/17V		
Contact material	AgNi		
Contact resistance	≤50mΩ		
Dielectric Strength			
Between adjacent contacts	1000VAC/1min		
Between open contacts / between live parts and ground	1500VAC/1min		
Between contact and coil	2000VAC/1min		
Insulation resistance	≥500MΩ (500VDC)		
General Characteristics			
Operate time (rated voltage)	≤20ms		
Release time (rated voltage)	≤20ms		
Operating frequency	18000 Ops/h		
Ambient temperature	-55~+70°C (Non-freezing condition)		
Ambient humidity	35%~85%RH		
Atmospheric pressure	86~106KPa		
Impact resistance	10G		
Vibration resistance	10~55Hz		
Electrical life (frequency: on for 1s, off for 1s)	≥10 ⁵ frequency (18000 Ops/h)		
Mechanical life (frequency: 300 cycles/1 min)	≥10 ⁷ frequency (18000 Ops/h)		
Weight per piece	About 35g		

Relay Base and Accessories

Part Number	Product Description	Number of Packages	Specification
RER-S2C-XXXX	2C, 10A, with indicator and control button	20	--
0149-10-08A	Screw connection relay base,DIN rail mounting	10	RER-S2C-XXXX
0149-11ES	Metal retaining clip	20	0149-10-08A
0149-13-08E	Clamping connection relay base,DIN rail mounting	10	RER-S2C-XXXX
0149-14	Pastic retaining clip	5	0149-13-08E
0149-36	6~250VDC Volt.suppression component	10	0149-13-08E
0149-35-24	6-24VAC / DC LED indicator	10	0149-13-08E
0149-35-240	110-240VAC / DC LED indicator	10	0149-13-08E