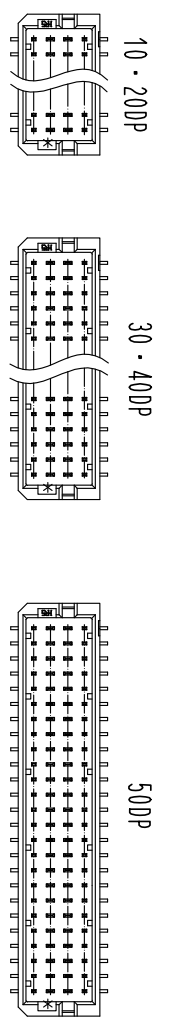
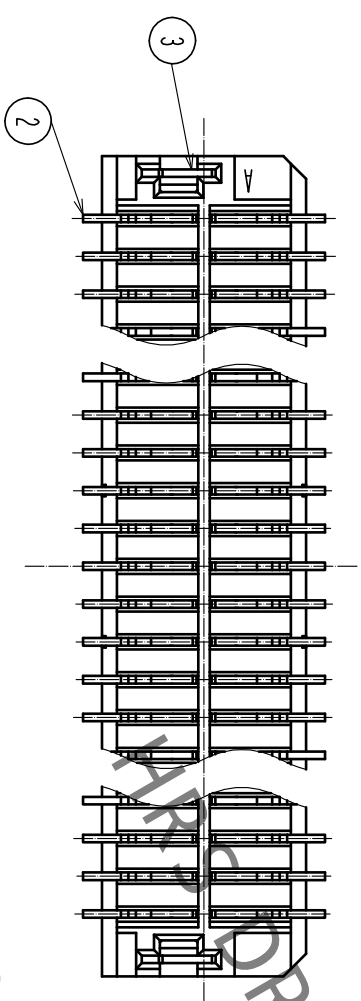
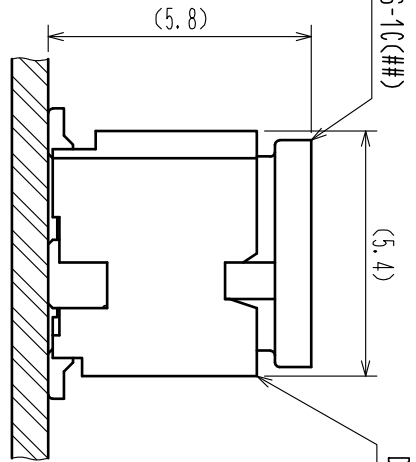
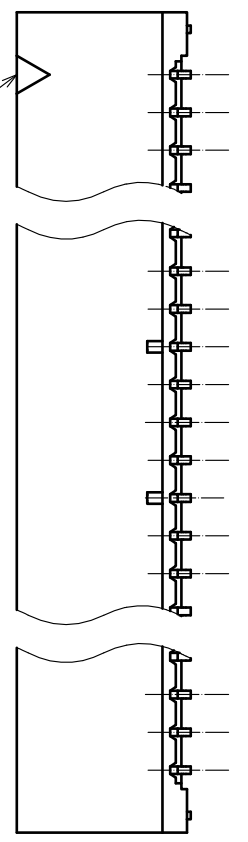


Part No.	HRS No.	Number of contacts	A	B	C
DF20EF-10DP-1V(52)	CL686-0055-0-52	10	4.0	7.3	6.6
DF20EF-20DP-1V(52)	CL686-0056-0-52	20	9.0	12.3	11.6
DF20EF-30DP-1V(52)	CL686-0057-0-52	30	14.0	17.3	16.6
DF20EF-40DP-1V(52)	CL686-0058-0-52	40	19.0	22.3	21.6
DF20EF-50DP-1V(52)	CL686-0053-0-52	50	24.0	27.3	26.6



2 The Number and Position of Ribs



Noted Figure (Free)

Notes 1. Lead Co-Planarity shall be 0.1mm Max including metal reinforced fitting.
 2 The number and position of ribs are indicated for number of contacts.
 3 Keep a pattern out of [hatched] area. It prevents from electric short.

NO.	MATERIAL	FINISH	REMARKS	NO.	MATERIAL	FINISH	REMARKS
1	Polyamide	Natural (Beige).	UL94V-0	3	Brass	Under plating: Nickel plated 1μm Min	
2	Phosphor Bronze	Contact area: Gold plated 0.2μm Min Lead area: Gold plated 0.015μm Min Under plating: Nickel plated 2μm Min		4	PS	Surface: Tin plated 1μm Min Under plating: Nickel plated 1μm Min	
6	Polyamide	Natural (Beige).	UL94V-0				
5	Polyester	Cover tape, Clear					

UNITS	SCALE	COUNT	DESCRIPTION OF REVISIONS	DESIGNED	CHECKED	DATE
mm	5 : 1	1	DIS-H-00005941	SN.MIWA	20200508	
APPROVED: HS.OKAWA		DRAWING NO.		DESIGNED		DATE
CHECKED: SZ.ONO		20200205		SN.MIWA		20200508
DESIGNED: SN.MIWA		20200205		SZ.ONO		
DRAWN: SN.MIWA		20200205		CL686-		

