

32.768kHz CMOS CERAMIC SMD CRYSTAL OSCILLATOR



3.2 x 2.5 x 0.9 mm

ASHEK SERIES



ESD Sensitive



RoHS/RoHS II compliant

MSL = N/A: Not Applicable

FEATURES:

- Ultra low uA current consumption with CMOS output
- Miniature ceramic package (3.2 x 2.5 x 0.9mm)
- Start up time less than 1 sec with supply voltage 1.5 to 5.0V
- Tri-state function
- Pb-free reflow capable

APPLICATIONS:

- General purpose clock generator for digital systems
- Clock drivers for Real Time Clocks
- Timekeeping in network servers and computers
- Electricity, gas and water metering
- Portable field communication
- Mobile phone
- Clock & Data recovery
- CCD clock for VTR camera
- Computers and peripherals
- Portable MP3 players & games

STANDARD SPECIFICATIONS:

Parameters	Minimum	Typical	Maximum	Units	Notes
Frequency	32.768			kHz	
Operating Temperature	-20		+70	°C	See options
Storage Temperature	-55		+125	°C	
Frequency Tolerance @ +25°C	-15	+5	+25	ppm	
Frequency Stability	-120		+10	ppm	- 20 to + 70 °C; referenced to frequency measured @ +25°C See options
Supply Voltage (V _{dd})	3.135	3.3	3.465	V	Standard
	4.75	5.0	5.25		Option 2
	2.66	2.8	2.94		Option 3
	1.71	1.8	1.89		Option 4
	1.425	1.5	1.575		Option 5
Supply Current (I _{dd})		0.9	1.5	uA	no load, V _{dd} =+ 3.3V
		1.8	2.5		no load, V _{dd} =+ 5.0V
		0.8	1.5		no load, V _{dd} =+ 2.8V
		0.6	1.5		no load, V _{dd} =+ 1.8V
		0.5	1.5		no load, V _{dd} =+ 1.5V
Output Load			15	pF	CMOS
Output Voltage	V _{OH}	V _{dd} -0.4		V	
	V _{OL}		0.4		
Tri-state function	"1" (VIH≥0.8*V _{dd} or open) : Oscillation "0" (VIH<0.2*V _{dd}) : Hi Z				
Aging	-5.0		+5.0	ppm	@+25°C First year
Symmetry @1/2V _{dd}	40	50	60	%	Standard
Start-up Time			1	s	0.9*V _{dd} @ +25°C
Rise/Fall Time (T _r /T _f)			200	ns	

32.768kHz CMOS CERAMIC SMD CRYSTAL OSCILLATOR



3.2 x 2.5 x 0.9 mm

ASHEK SERIES



RoHS/RoHS II compliant

OPTIONS & PART IDENTIFICATION:

(Left blank if standard)

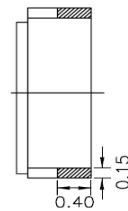
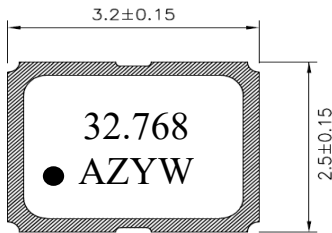
ASHEK -32.768kHz - -

Supply Voltage	
Blank:	3.3V
2:	5.0V
3:	2.8V
4:	1.8V
5:	1.5V

Frequency Temp Characteristics / Stability	
Blank:	-20°C to +70°C / -120 to +10 ppm
L:	-40°C to +85°C / -200 to +10 ppm

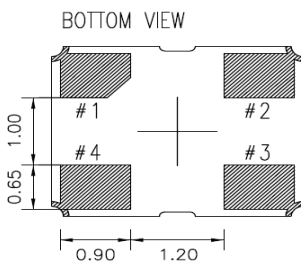
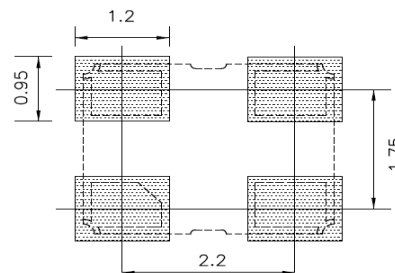
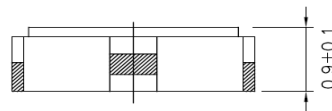
Packaging	
Blank:	Bulk
T:	Tape and Reel (1kpcs)
T3:	Tape and Reel (3kpcs)

OUTLINE DIMENSION:



PIN #	Name
1	Tri-state or NC
2	GND
3	Output
4	Vdd

Note: Recommend using an approximately 0.01uF bypass capacitor between PIN 2 and 4.



Dimensions: mm

32.768kHz CMOS CERAMIC SMD CRYSTAL OSCILLATOR



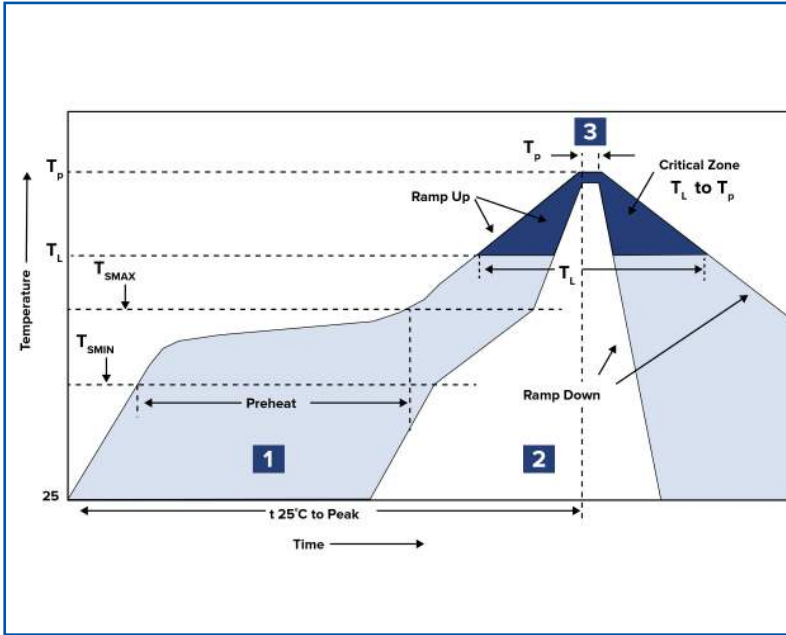
3.2 x 2.5 x 0.9 mm

ASHEK SERIES



RoHS/RoHS II compliant

REFLOW PROFILE:

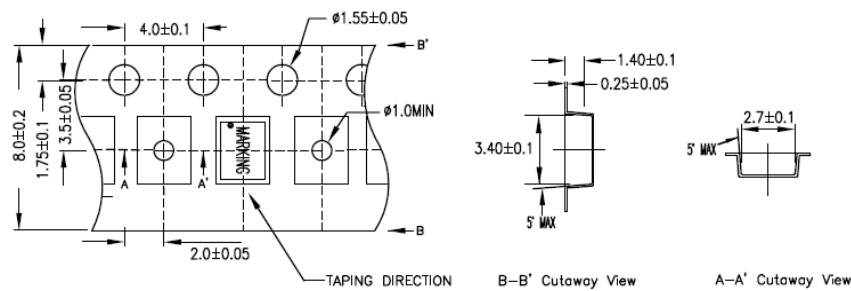


Zone	Description	Temperature	Time
1	Preheat / Soak	T _S MIN ~ T _S MAX 150°C ~ 180°C	60 ~ 120 sec
2	Reflow	T _L 230°C	30 ~ 40 sec
3	Peak heat	T _P 260°C ± 5°C	5 sec MAX

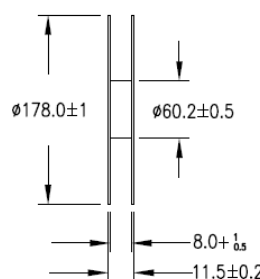
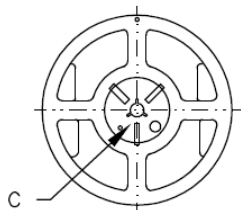
TAPE & REEL:

T= Tape and reel (1,000pcs/reel)
T3= Tape and reel (3,000pcs/reel)

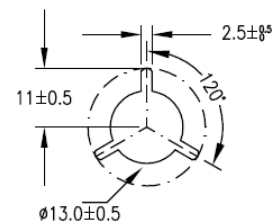
1. CARRIER TYPE



2. REEL



C. ENLARGE



Dimensions: mm



5101 Hidden Creek Lane Spicewood TX 78669
Phone: 512-371-6159 | Fax: 512-351-8858
For terms and conditions of sale please visit:
www.abracon.com

REVISED: 12.05.2018

ABRACON IS
ISO9001-2015
CERTIFIED