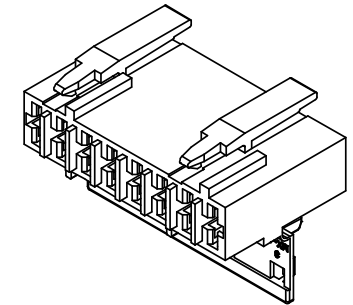
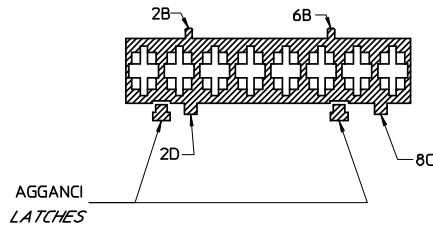


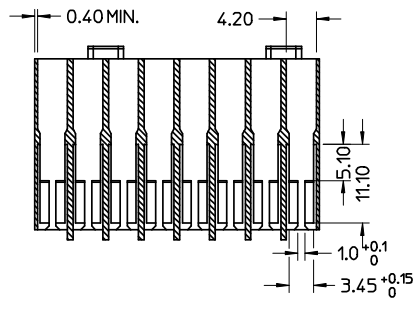
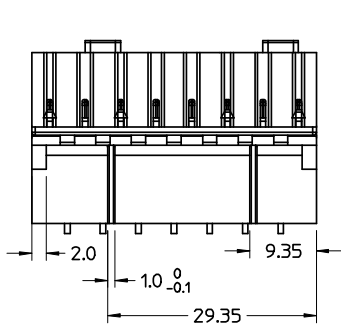
Dettaglio1  
SCALA 5:1

CONFIGURAZIONE POLARIZZAZIONI  
POLARIZATION CONFIGURATION

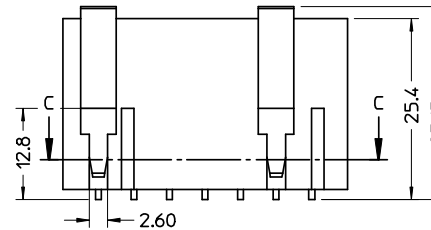
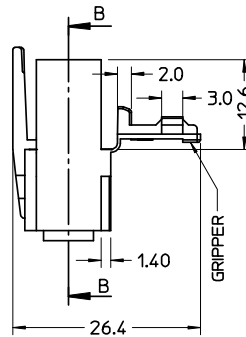


- NOTE:
- USATO CON TERMINALE 94518-0XXX E 94549-0XXX
  - SPECIFICA DI RIFERIMENTO PER IL CONNETTORE PS-94550-001
  - PER CARATTERISTICHE DI CRIMPATURA RIF. SD-94518-005 E SD-94549-001
  - FORZA DI DISACCOPIAMENTO CONNETTORE (TRAZIONANDO DAI CAVI SENZA AZIONARE L'AGGANCI): 60 N MIN.
  - SPESSORE MINIMO PARETI CONNETTORE 0.40 mm.

- NOTE:
- USED WITH TERMINALS 94518-0XXX AND 94549-0XXX
  - REFER TO PS-94550-001 FOR CONNECTOR SPECIFICATION
  - REFER TO SD-94518-005 FOR AND SD-94549-001 CRIMPING CHARACTERISTICS
  - CONNECTOR DISENGAGEMENT FORCE (PULLING BY THE WIRES, WITHOUT ACTUATING THE LATCH): 60 N MIN.
  - MINIMUM CONNECTOR WALL THICKNESS 0.40 mm.



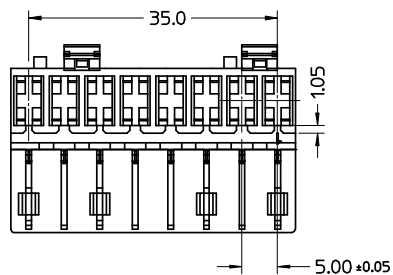
SEZ: B-B



AGENCY  
RECOGNIZATIONS  
CSA (file LR19980)  
UL (file E-29179)

P/N	MATERIAL/COLOR
94550-9108	NYLON 6.6 VO NATURAL
94550-9198	NYLON 6.6 VO GREY

CONFEZIONE: Box da 1200 Pz.  
PACKAGING: 1200 pcs in carlan box



SPQ =1200

Std. Descr: 'HSG W/SEC LOCK AND LATCHES 8CKT \_\_\_\_\_ COLOR'

EC NO: Z2004-0206 DRWN:FGOTTARD004/05/12 CHKD:RSANDAN004/05/12 APPR:GZUIN 2004/05/13	QUALITY SYMBOLS	GENERAL TOLERANCES (UNLESS SPECIFIED)	SCALE 2:1	DESIGN UNITS METRIC	FIRST ANGLE PROJECTION	REVISE ON CAD ONLY	
	0 0			DIMENSION STYLE MM ONLY	TITLE HSG 8 CKT WITH SEC.LOCK AND EXTERNAL LATCH		
		4 PLACES ± --- ± ---	mm INCH	DRAWN BY FGOTTARD	DATE 2002/07/24	MOLEX INCORPORATED MATERIAL NO. SEE TABLE DOCUMENT NO. SD-94550-009 SHEET NO. 1 OF 1	
		3 PLACES ± --- ± ---		CHECKED BY MTESTAGU	DATE 2002/07/24		
2 PLACES ± 0.10 ± ---		APPROVED BY GZUIN	DATE 2002/07/24	THIS DRAWING CONTAINS INFORMATION THAT IS PROPRIETARY TO MOLEX INCORPORATED AND SHOULD NOT BE USED WITHOUT WRITTEN PERMISSION			
1 PLACE ± 0.2 ± ---		ANGULAR ± 2 °					
		DRAFT WHERE APPLICABLE					
		MUST REMAIN WITHIN DIMENSIONS					