

4

3

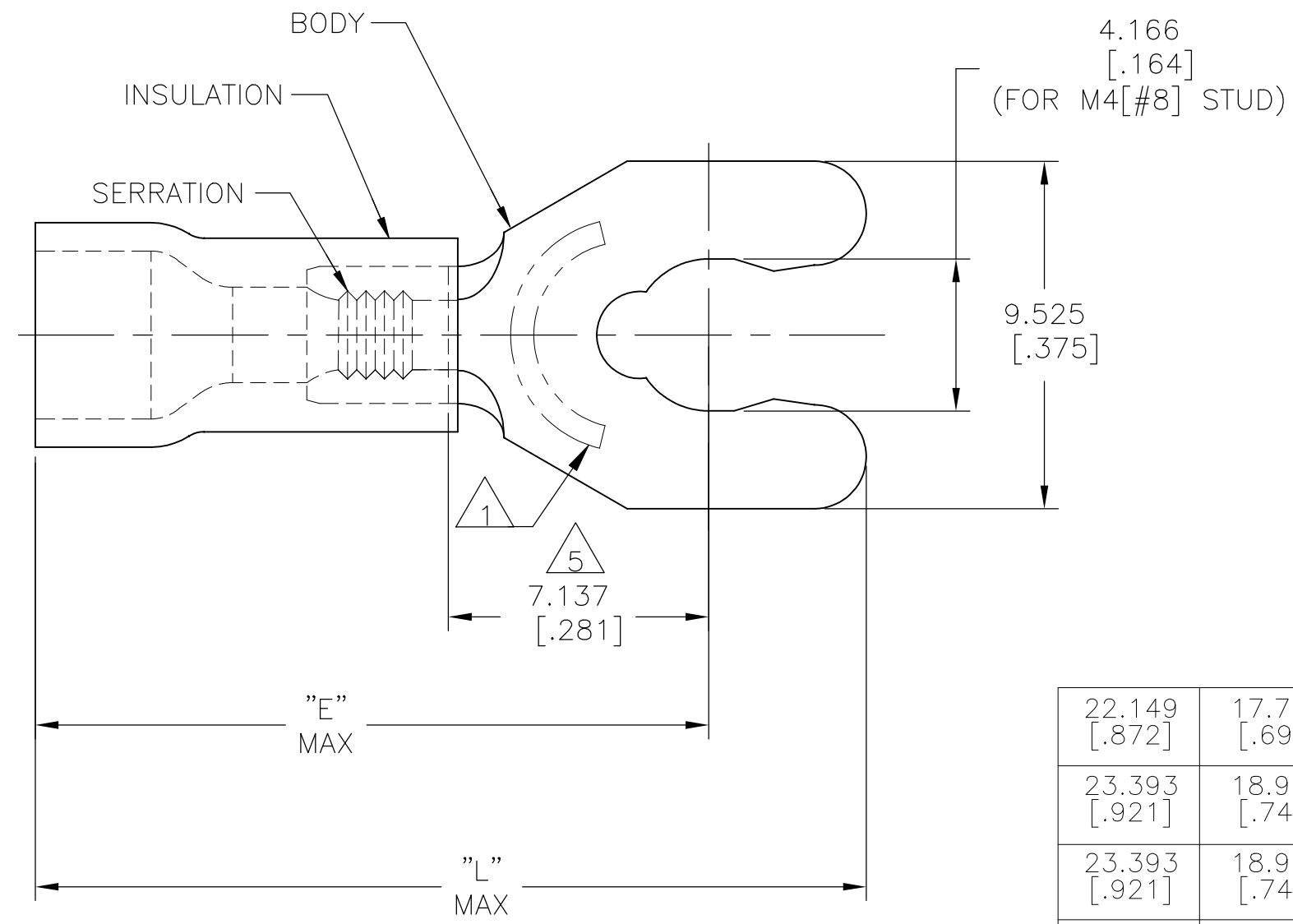
2

1

THIS DRAWING IS UNPUBLISHED. RELEASED FOR PUBLICATION
 © COPYRIGHT - By - ALL RIGHTS RESERVED.

REVISIONS				
P	LTR	DESCRIPTION	DATE	APVD
N1		REVISED PER ECO-11-004917	11MAR11	RK HMR
N2		REVISED PER ECO-17-014338	27MAR2018	RS DR

AMP WIRE RANGE	Listed FILE E13288	LR7189 Certified
16-14 AWG SOLID OR STRANDED	16-14 AWG SOLID OR STRANDED	16-14 AWG SOLID OR STRANDED



- 1 STAMP 8SAMP 16-14* APPROX AS SHOWN
- 2 SEE TABLE FOR WIRE INSUL DIA
- 3 BODY MATL THK, 0.787±0.051 [.031±.002]
- 4 MATERIAL: BODY - BRASS PER ASTM B-36
INSULATION - PVC.
- 5 APPLIES FROM CENTER OF STUD HOLE
TO EDGE OF METAL WIRE BARREL

22.149 [.872]	17.704 [.697]	3.000-4.826 [.118-.193]	100	LOOSE PIECE,BOX	7-52956-1
23.393 [.921]	18.948 [.746]	3.810-6.350 [.150-.250]	2500	ON TAPE, REEL	52956-3
23.393 [.921]	18.948 [.746]	3.810-6.350 [.150-.250]	1000	LOOSE PIECE	52956-2
22.149 [.872]	17.704 [.697]	3.000-4.826 [.118-.193]	5000	ON TAPE, REEL	52956-1
22.149 [.872]	17.704 [.697]	3.000-4.826 [.118-.193]	1000	LOOSE PIECE	52956
L	E	WIRE INSUL DIA	QTY	PACKAGE TYPE	PART NO

AMP INCORPORATED
CUSTOMER SERVICE SYSTEMS

FOR ADDITIONAL PRODUCT INFORMATION OR COPIES OF DRAWINGS AND TECHNICAL DOCUMENTS
 PRODUCT INFORMATION CENTER
 1-800-522-6752

FOR APPLICATION TOOLING INFORMATION
 TOOLING ASSISTANCE CENTER
 1-800-722-1111

FOR ORDER ENTRY
 1-800-526-5142

MAX RECOMMENDED OPERATING TEMPERATURE:
 105°C [221° F]

VOLTAGE RATING:
 600V MAX
 (1000V FIXTURE OR SIGN)

CIRCULAR MIL AREA:
 1.04-2.62mm²[2,050-5,180]
 SOLID OR STRANDED

THIS DRAWING IS A CONTROLLED DOCUMENT FOR AMP INCORPORATED. IT IS SUBJECT TO CHANGE AND THE CONTROLLING ENGINEERING ORGANIZATION SHOULD BE CONTACTED FOR THE LATEST REVISION.

THIS DRAWING IS A CONTROLLED DOCUMENT.

DIMENSIONS:
 mm [INCHES]

TOLERANCES UNLESS OTHERWISE SPECIFIED:

0 PLC ± -
 1 PLC ± -
 2 PLC ± -
 3 PLC ± 0.127[.005]
 4 PLC ± -
 ANGLES ± -

MATERIAL
 4

FINISH
 BODY: TIN PER ASTM B545
 INSULATION: COLOR-BLUE

DWN 26JUN95
 L OLMEDA
 CHK 26JUN95
 M ELLIS
 APVD 26JUN95
 G NGO
 PRODUCT SPEC
 UL 486A-B
 APPLICATION SPEC
 114-2161
 WEIGHT
 CUSTOMER DRAWING

TE TE Connectivity Ltd.

NAME
 TERMINAL, SPRING SPADE,
 SHORT, PLASTI-GRIP,
 WIRE SIZE: 16-14 AWG

SIZE CAGE CODE DRAWING NO RESTRICTED TO
 A3 00779 C-52956 -

SCALE 6:1 SHEET 1 OF 1 REV N2