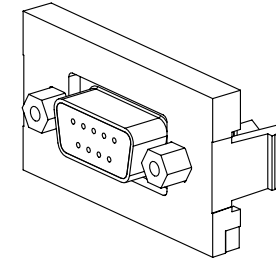
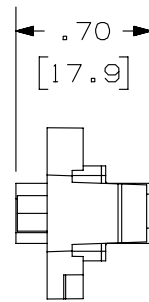
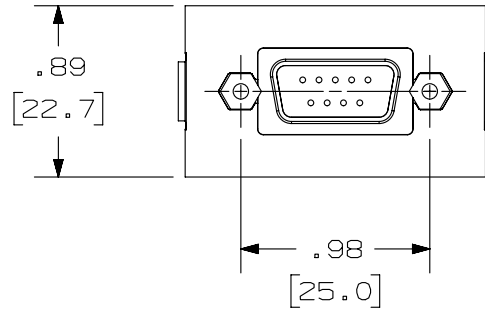
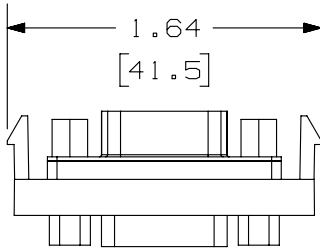


THIS COPY IS PROVIDED ON A RESTRICTED BASIS AND IS NOT TO BE USED IN ANY WAY DETRIMENTAL TO THE INTERESTS OF PANDUIT CORP.

	PANDUIT P/N	WEIGHT
A	CHD9C**	.29 LB/10 PCS
B	IAPHD9CWH	(132.3 g/10 PCS)

NOTES:

1. SEE CURRENT CATALOG FOR ADDITIONAL PART NUMBER SUFFIXES TO INDICATE COLOR AND OR PACKAGE QUANTITY.
2. SEE CATALOG FOR COMPLETE LIST OF PARTS APPLICABLE FOR USE WITH THIS PART.
3. DIMENSIONS IN PARENTHESES ARE IN METRIC.
4. PART TO WORK WITH ALL PANDUIT FACEPLATE FRAMES.



PART NUMBER		SEE TABLE	
TITLE			
9 PIN SVGA 1/3 INSERT COUPLER			
CUSTOMER DRAWING			
ITEM REVISION NAME		M01095AA/01	
DATASET FILE NAME		M01095AA_DC06/01D	
UNLESS OTHERWISE SPECIFIED, DIMENSIONAL TOLERANCES ARE: IN [mm]		MATERIAL:	
.x ± .xxx ± .010 [.3]		DRAWING NUMBER: 01095-06	
.xx ± .03 [.8] ANGES ±			
		THIRD ANGLE PROJECTION	
DRAWN BY	DATE	CHK	SCALE
JSP	1-26-01	PBD	NONE
REV	DATE	BY	CHK
3	7-31-14	BJN	JSP
2	6-6-11	BJN	JSP
1	2-16-01	JSP	PBD
R	1-26-01	JSP	PBD
DESCRIPTION		ECN	
C. REMOVED "MINI-COM" FROM TITLE D. UPDATED TITLE BLOCK		01095-06	
B. ADDED SUPPLEMENTAL P/N IAPHD9CWH		01095-06	
A. ADDED "C" TO PART NO.		01095-06	
RELEASED TO PRODUCTION		01095-06	
SHT 1 OF 1		A	

D10100DA/14

2

1

2

1