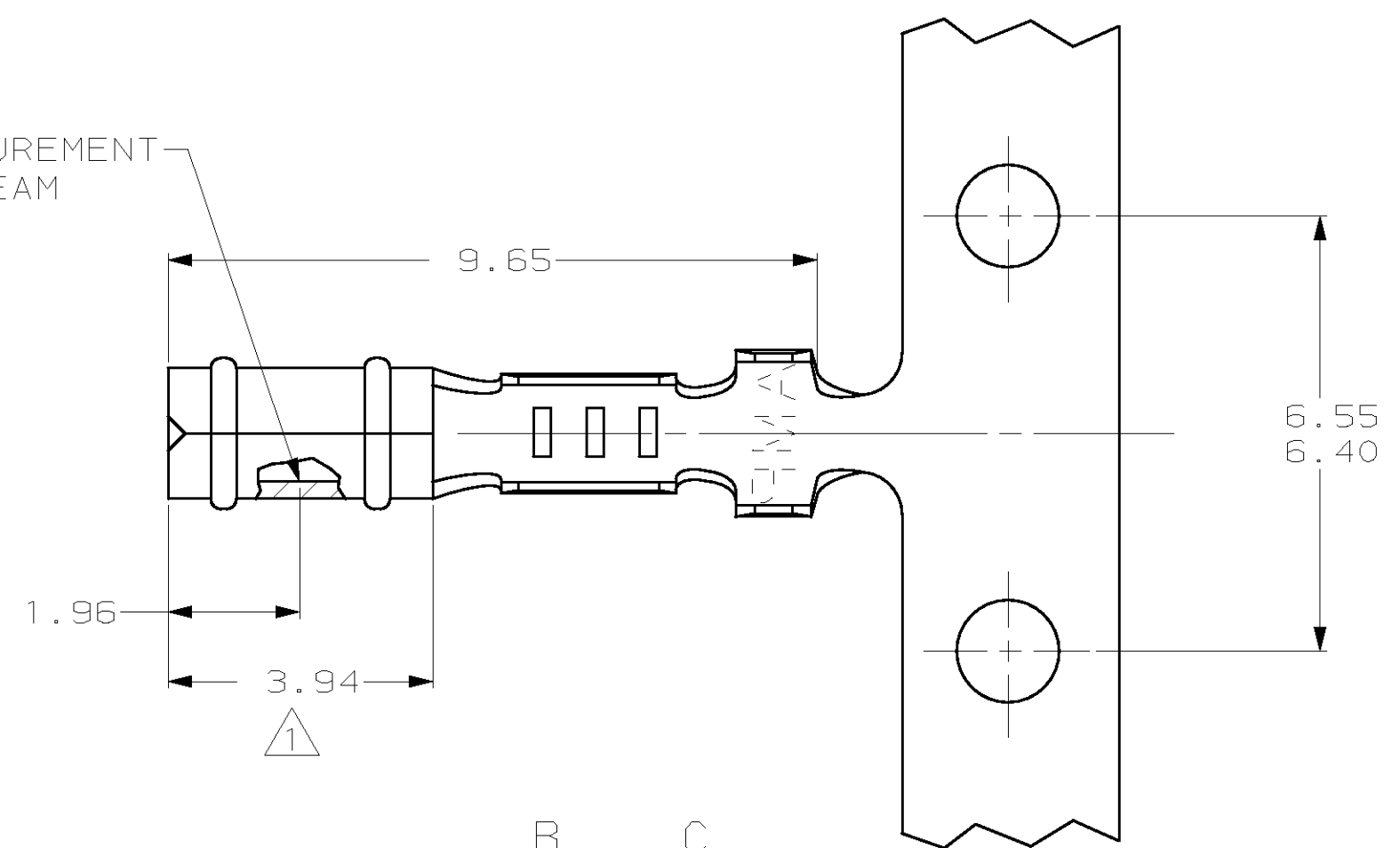


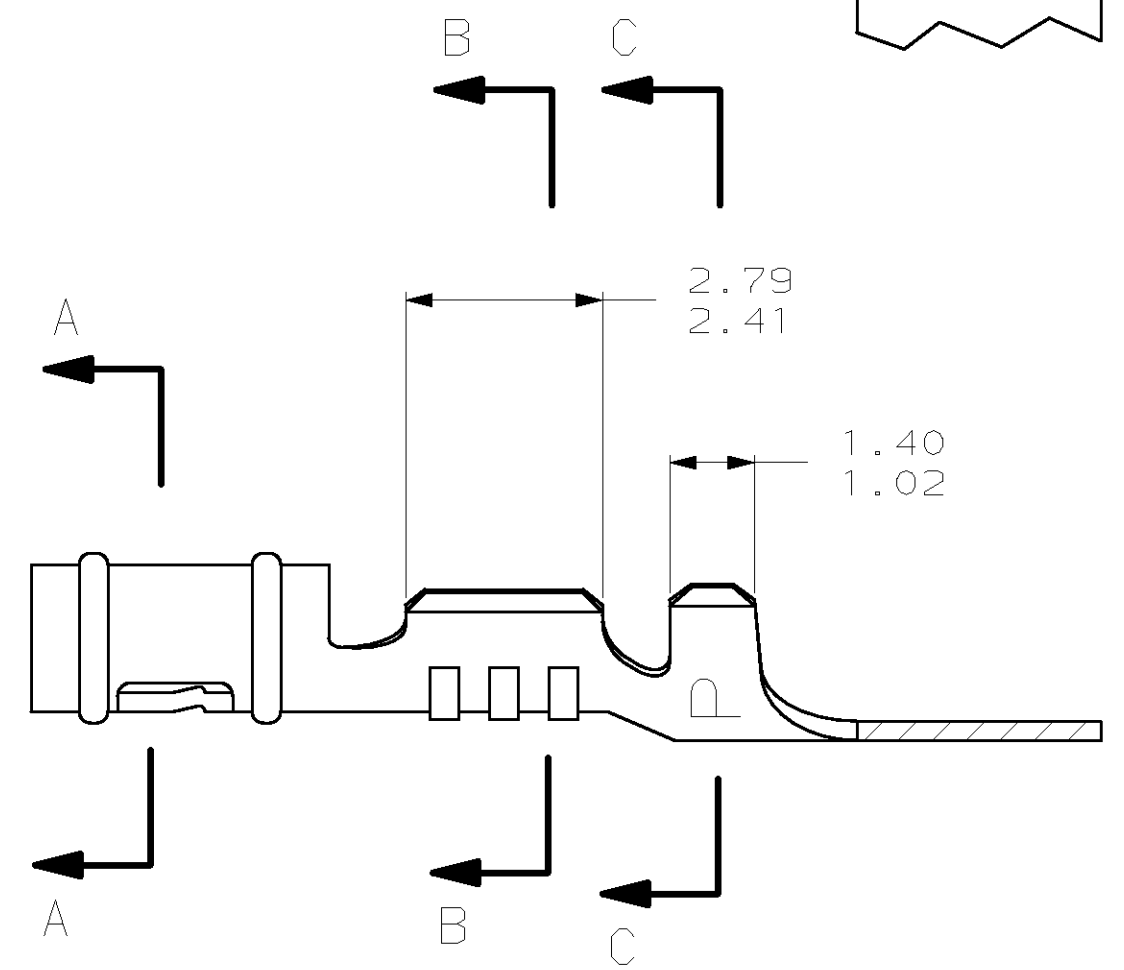
LOC	DIST	REVISIONS			
P	LTR	DESCRIPTION	DATE	DWN	APVD
CM	52	V	REV & REDWN PER EC 0L30-0146-97	5-15-97	TB RS

- 1. 0.00076 MIN SELECTIVE GOLD PLATING ON INSIDE OF RECEPTACLE OVER NICKEL OVER ALL UNDERPLATE.
- 2. WIRE RANGE: 0.12 - 0.4 MM² (26 - 22 AWG)
- 3. INSULATION RANGE: 0.89 - 1.65

POINT OF MEASUREMENT
 1 90° FROM SEAM



SECTION A-A



SECTION B-B

SECTION C-C

1	0.25 BE COPPER	60888-4
2	MATTE TIN	0.25 BE COPPER
3	0.25 PH BRZ	60888-2
4	PRE-TIN	0.25 PH BRZ
5	FINISH	MATERIAL
		PART NUMBER

MM	IN	MM	IN	MM	IN	MM	IN
1.359	.0535	1.91	.075	2.79	.110	-	-
1.02	.040	1.65	.065	2.67	.105	-	-
0.89	.035	1.63	.064	2.41	.095	9.65	.380
0.25	.010	1.486	.0585	2.29	.090	6.55	.258
0.13	.005	1.47	.058	2.06	.081	6.40	.252
0.00076	.000030	1.40	.055	1.96	.077	3.94	.155
MM	IN	MM	IN	MM	IN	MM	IN

CONVERSION TABLE

METRIC

THIS DRAWING IS A CONTROLLED DOCUMENT.

DIMENSIONS:	TOLERANCES UNLESS OTHERWISE SPECIFIED:	DWN	5-15-97
mm		T. BECK	
	0 PLC ±	CHK	5-15-97
	1 PLC ±	R. SWING	
	2 PLC ±0.13	APVD	8-08-97
	3 PLC ±	A. BEDDICK	
	4 PLC ±	PRODUCT SPEC	
	ANGLES ±	APPLICATION SPEC	
		WEIGHT	
MATERIAL	SEE TABLE	FINISH	SEE TABLE

AMP Incorporated
 Harrisburg, PA 17105-3608

RECEPTACLE, .058 DIAMETER,
 26-22 AWG, .035-.065
 INSULATION, P.C. CONTACT

SCALE 10:1 SHEET 1 OF 1 REV V