

# BINDING POSTS

Designers' Choice

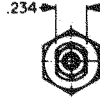
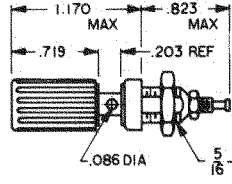
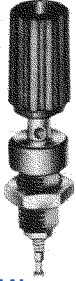


All Keystone binding posts are designed to prevent accidental contact with current carrying parts. They feature a "limited opening" captivated head to insure safety. Ideal for audio circuitry, R.F. Circuitry, oscilloscopes, power supplies and various other applications.

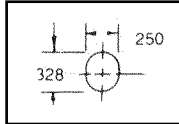
These multi-purpose binding posts feature high current rating, captivated heads and anti-rotation stud mounting.

**NOTE:** Binding Posts accept .175" Banana Plugs, .080" Tip Plugs, Spade Lugs, Alligator Clips, Wires and EZ hooks.

## STANDARD BINDING POST



Mounting Detail



### MATERIAL

**Stud:** Brass per QQ-B-626  
**Finish:** Silver Plate  
**Insulation:** Nylon

### RATINGS

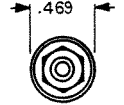
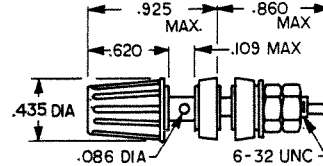
**Current:** 15 Amps  
**Breakdown voltage:** 5700 VRMS  
**Stud to panel capacitance:** 3.3 pF Nominal

FOR PANELS UP TO .281" THICK

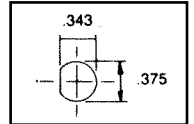
CAT. NO.	COLOR
7004	RED
7005	BLACK

## MINIATURE FLUTED HEAD

Rated 15 Amperes, 1000 VAC Working. Stud: Brass per ASTM B-16 Nylon Insulation. Choice of Gold or Tin Plate.



Mounting Detail



### GOLD PLATE

CAT. NO.	COLOR
7012	RED
7013	BLACK

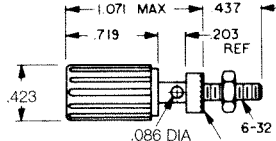
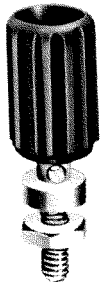
### TIN PLATE

CAT. NO.	COLOR
7014	RED
7015	BLACK

## ECONOMY BINDING POST

Rated 15 Amps, 1000 VAC working.

**Stud:** Brass per ASTM -B16  
**Finish:** Nickel Plate  
**Insulation:** Nylon



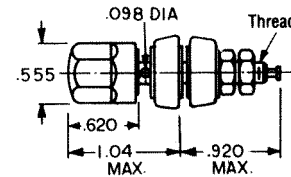
Serrated mounting surface

FOR PANELS UP TO .313 THICK

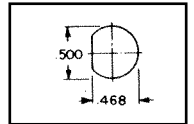
CAT. NO.	COLOR
7006	RED
7007	BLACK

## STANDARD HEX HEAD

Rated 30 Amperes, 1000 VAC Working. Nylon Insulation. Stud: Brass per ASTM B-16. Choice of Gold or Tin Plate.



Mounting Detail



### GOLD PLATE

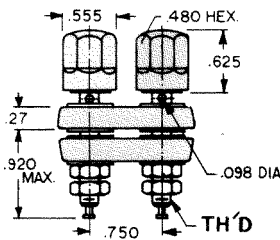
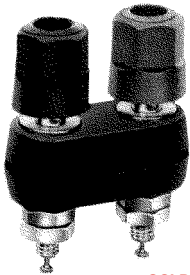
CAT. NO.	TH'D	COLOR
4096	8-32	RED
4097	8-32	BLACK
7016	10-32	RED
7017	10-32	BLACK

### TIN PLATE

CAT. NO.	TH'D	COLOR
4091	8-32	RED
4092	8-32	BLACK
4093	10-32	RED
4094	10-32	BLACK

## STANDARD DUAL HEAD

Rated 30 Amperes, 1000 VAC working. Studs: Brass per ASTM B-16. Nylon Insulation. Mounts in .500 holes on .750 centers. Supplied with: 1 Red-1 Black head. Choice of Gold or Tin Plate.



### GOLD PLATE

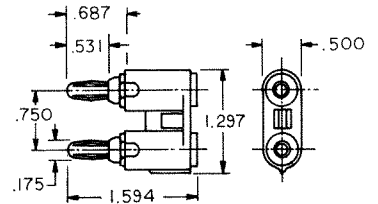
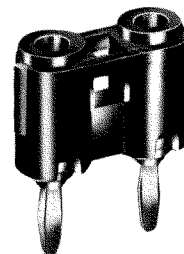
CAT. NO.	THREAD
4108	8-32
4109	10-32

### TIN PLATE

CAT. NO.	THREAD
7018	8-32
7019	10-32

## DUAL BANANA PLUGS

Spring: Nickel Silver. Body: Brass per ASTM B-16. Finish: Nickel Plate. Insulation: Molded Nylon. .750 Mounting Centers. Breakdown: 3500 VRMS



### SOLDERLESS WITH SET SCREW

CAT. NO.	COLOR
6088	RED
6089	BLACK