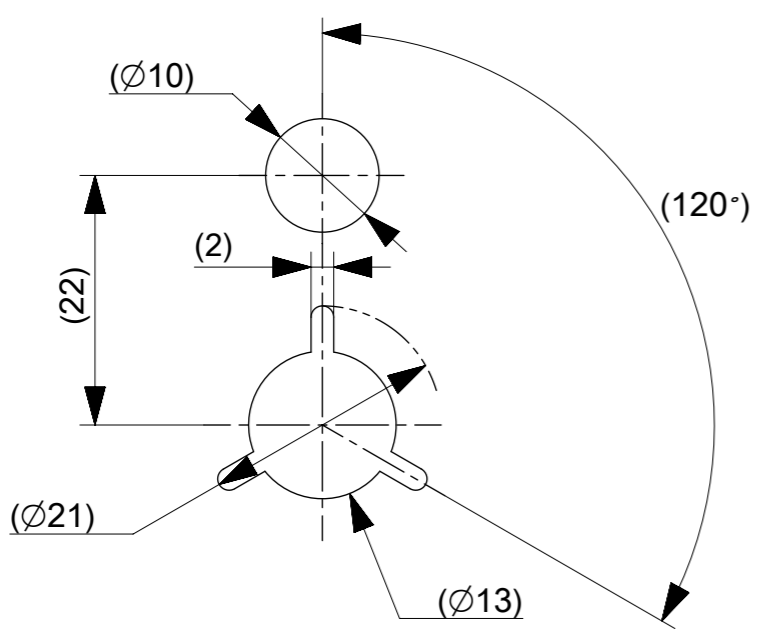


NOTES

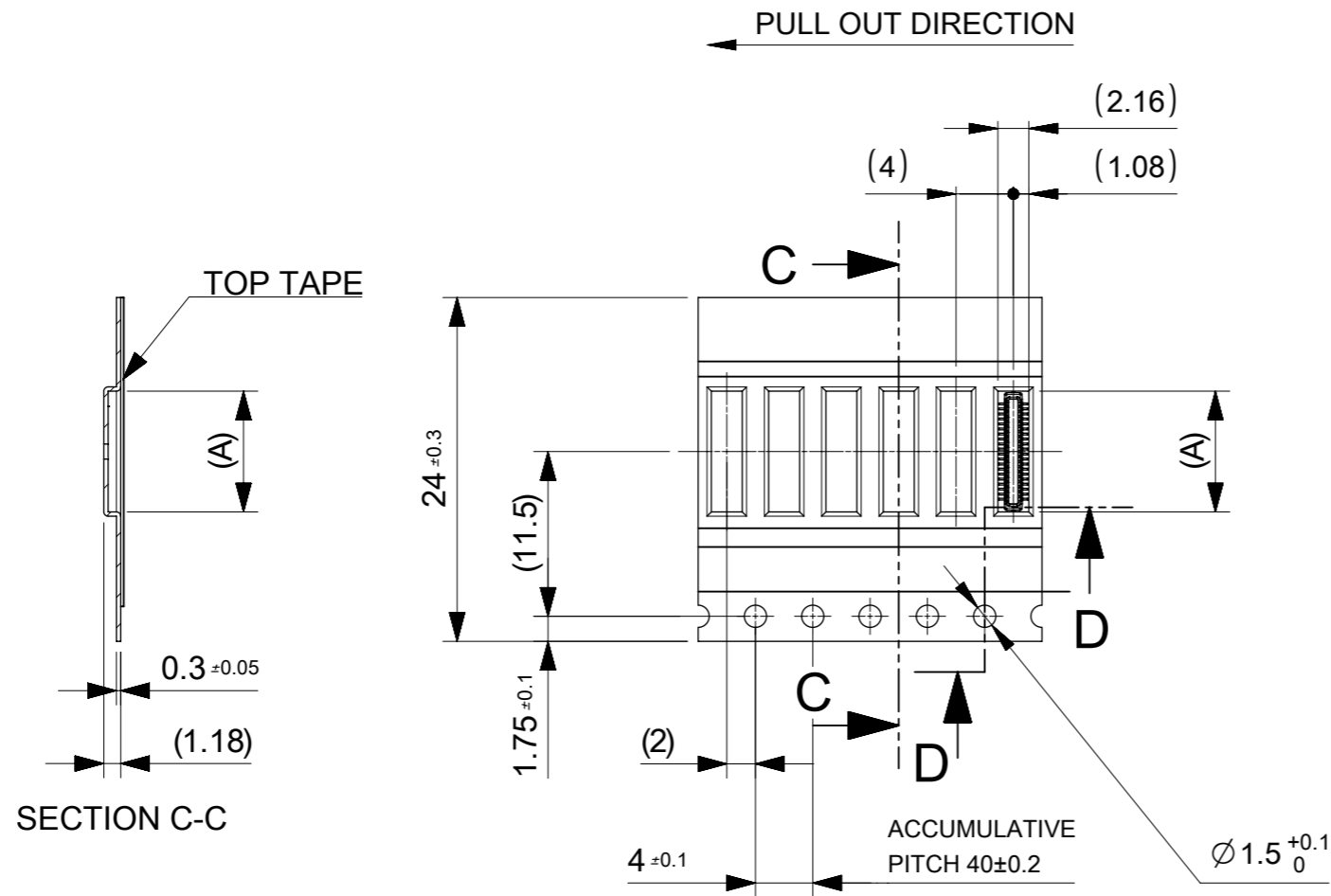
1. RE DETAILED DIMENSION, SEE PRODUCT DRAWING.
2. NUMBER OF CONNECTORS : 15000PCS/REEL
3. LEAD TAPE LENGTH
4. TOP TAPE PEEL FORCE IS DEFINED BY IEC60286-3.
5. MATERIAL
 CARRIER TAPE : POLYSTYRENE
 TOP TAPE : PET , OTHER
 REEL : POLYSTYRENE (PS) < RECYCLE MATERIAL CONTAINED >
6. ELV AND RoHS COMPLIANT



DETAIL "D"

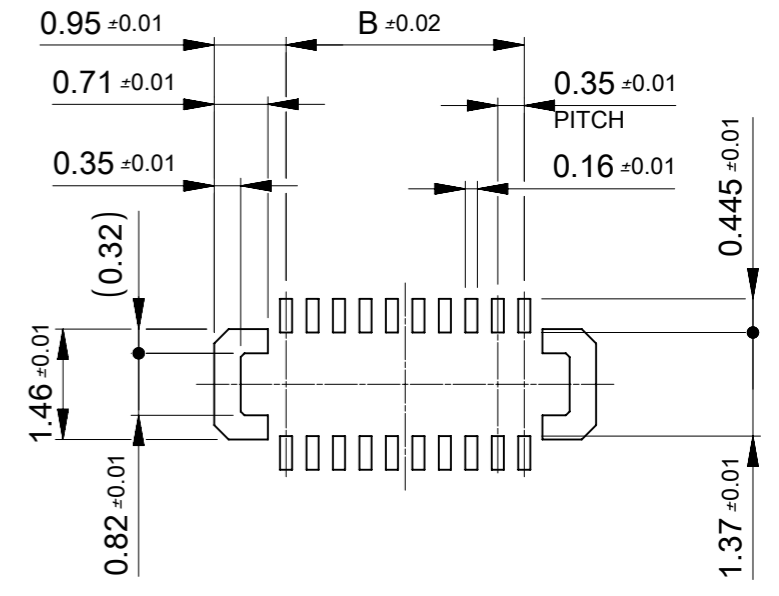
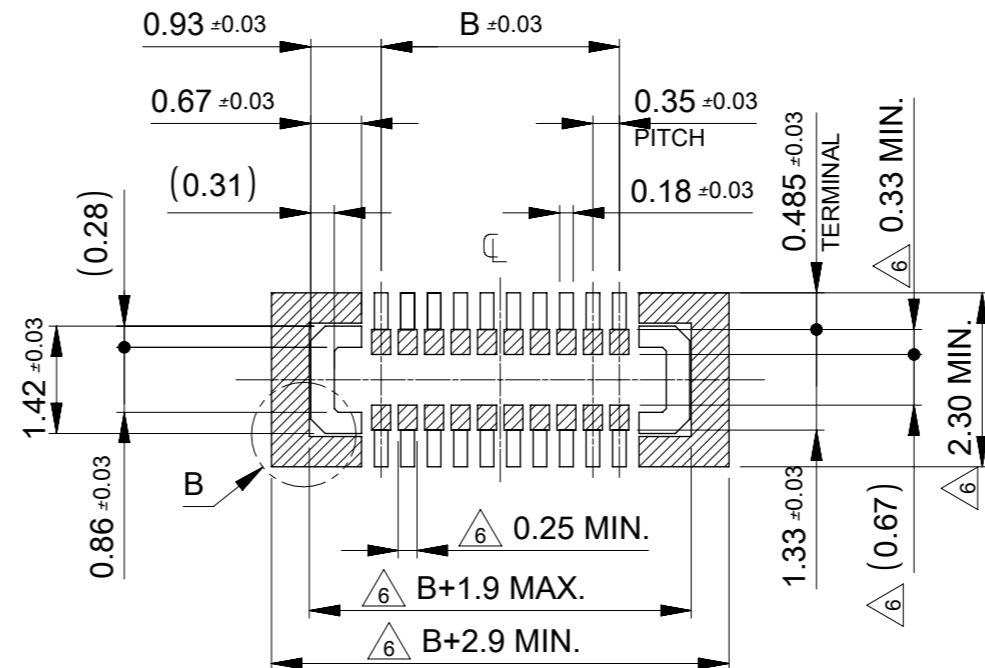
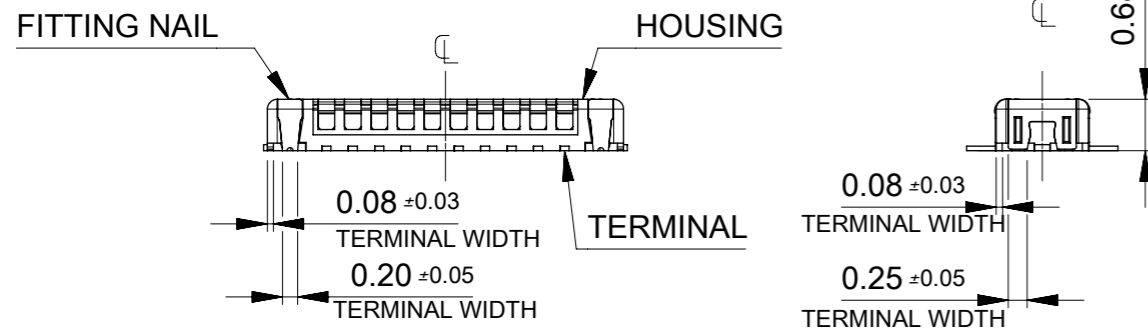
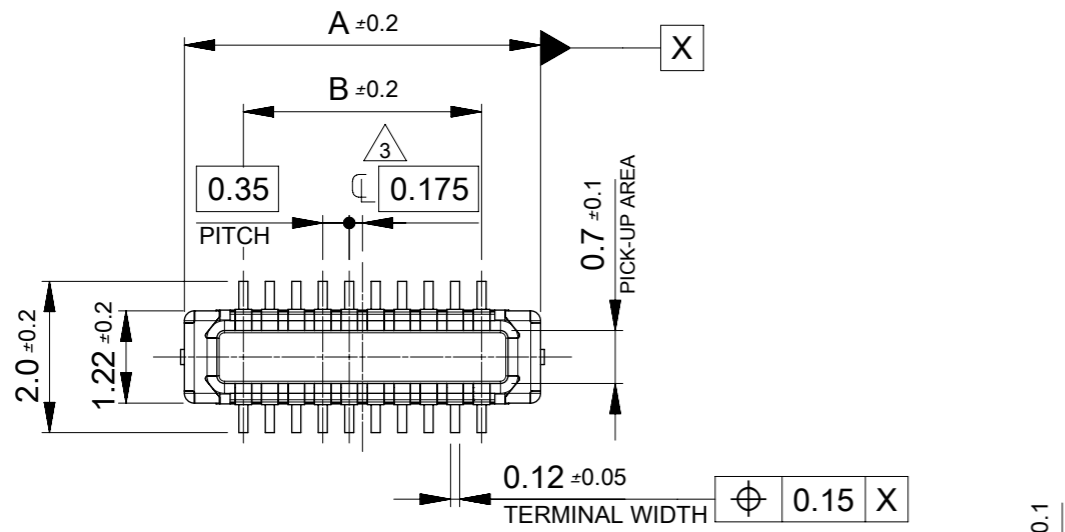
MODEL NO. 2024370**3

SYMBOLS		THIS DRAWING CONTAINS INFORMATION THAT IS PROPRIETARY TO MOLEX ELECTRONIC TECHNOLOGIES, LLC AND SHOULD NOT BE USED WITHOUT WRITTEN PERMISSION		CURRENT REV DESC:			molex		
$\nabla = 0$	mm	SCALE	1:1	EC NO: 609517					
$\nabla = 0$	GENERAL TOLERANCES (UNLESS SPECIFIED)			DRWN: NOKIMOTO 2018/12/21			PRODUCT CUSTOMER DRAWING		
$\nabla = 0$	ANGULAR TOL $\pm 3.0^\circ$			CHK'D: KTANAKA03 2019/01/09			DOCUMENT NUMBER		
$\nabla = 0$	4 PLACES ± 0.03			APPR: TKUSUHARA01 2019/01/09			2024370000		
$\nabla = 0$	3 PLACES ± 0.03			INITIAL REVISION:			DOC TYPE		
$\nabla = 0$	2 PLACES ± 0.05			DRWN: NOKIMOTO 2018/06/08			PSD		
$\nabla = 0$	1 PLACE ± 0.1			APPR: TKUSUHARA01 2018/11/30			002		
$\nabla = 0$	0 PLACES ± 0.2			DRAFT WHERE APPLICABLE MUST REMAIN WITHIN DIMENSIONS			B		
$\square = 0$	THIRD ANGLE PROJECTION			DRAWING			SERIES		
$\nabla = 0$	A3-SIZE			202437			MATERIAL NUMBER		
				CUSTOMER			SHEET NUMBER		
				GENERAL			1 OF 2		



24	29.4	25.4	11.93	2024370603	○	---	60
			10.18	2024370503	○	---	50
			8.43	2024370403	○	---	40
キャリアテープ幅 CARRIER TAPE WIDTH	C	B	(A)	EMBOSSED TAPE PACKAGE	HIGH VOL. TOOL	LOW VOL. TOOL	CIRCUIT
				ORDER NO.	SAMPLE PREPARATION ○:TOOLED △:WOOK IN PROCESS ---:TOOLING TO BE CONFIRMED		

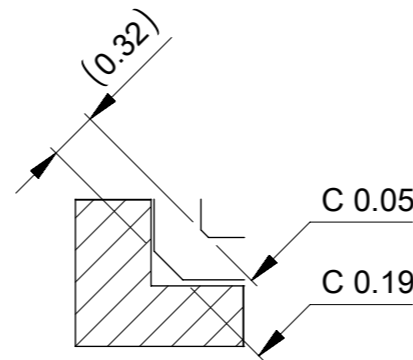
SYMBOLS	THIS DRAWING CONTAINS INFORMATION THAT IS PROPRIETARY TO MOLEX ELECTRONIC TECHNOLOGIES, LLC AND SHOULD NOT BE USED WITHOUT WRITTEN PERMISSION		CURRENT REV DESC:		molex		
	DIMENSION UNITS	SCALE					
▽ = 0	mm	2:1	EC NO: 609517		0.35 BB HB8 PLUG EMBSTP PKG		
▽ = 0	GENERAL TOLERANCES (UNLESS SPECIFIED)		DRWN: NOKIMOTO 2018/12/21		PRODUCT CUSTOMER DRAWING		
▽ = 0	ANGULAR TOL ± 3.0°		CHK'D: KTANAKA03 2019/01/09		DOCUMENT NUMBER		
▽ = 0	4 PLACES ± 0.03		APPR: TKUSUHARA01 2019/01/09		2024370000		
▽ = 0	3 PLACES ± 0.03		INITIAL REVISION:		DOC TYPE		
▽ = 0	2 PLACES ± 0.05		DRWN: NOKIMOTO 2018/06/08		PSD		
▽ = 0	1 PLACE ± 0.1		APPR: TKUSUHARA01 2018/11/30		DOC PART		
▽ = 0	0 PLACES ± 0.2		SERIES		002		
▽ = 0	DRAFT WHERE APPLICABLE MUST REMAIN WITHIN DIMENSIONS		THIRD ANGLE PROJECTION		REVISION		
▽ = 0			DRAWING		B		
		A3-SIZE		MATERIAL NUMBER		SHEET NUMBER	
		202437		CUSTOMER		2 OF 2	
				GENERAL			



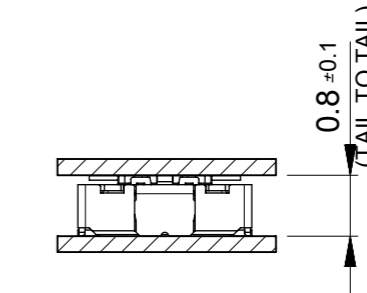
P.W. BOARD PATTERN LAYOUT (REFERENCE)

RECOMMENDED METAL MASK LAYOUT (REFERENCE)

RECOMMENDED THICKNESS OF METAL MASK : t=0.08mm
 OPEN APERTURE OF METAL MASK APPROX. 80% For TERMINAL
 APPROX. 120% For FITING NAIL



DETAIL B SCALE 20:1



MATED CONDITION

- NOTES**
- MATERIAL**
 HOUSING : LIQUID CRYSTAL POLYMER UL94V-0(COLOR : BLACK)
 TERMINAL : COPPER ALLOY
 FITTING NAIL : COPPER ALLOY
 - PLATING**
TERMINAL :
 CONTACT AREA: SEPARAED GOLD PLATING (0.1 MICROMETER MINIMUM).
 SOLDER TAIL AREA: SEPARATED GOLD PLATING
 UNDER PLATING : NICKEL OVERALL
 *DIVIDE INTO PARTS THE GOLD PLATING OF THE CONTACT AND THE TAIL PART BY THE NICKEL PLATING.
FITTING NAIL :
 CONTACT AREA: SEPARAED GOLD PLATING (0.1 MICROMETER MINIMUM).
 SOLDER TAIL AREA: SEPARATED GOLD PLATING
 UNDER PLATING : NICKEL OVERALL
 *DIVIDE INTO PARTS THE GOLD PLATING OF THE CONTACT AND THE TAIL PART BY THE NICKEL PLATING.
 *EVEN THOUGH GOLD PLATING ON THE TOP SURFACE OF NAIL MIGHT BE THIN, NO FUNCTIONAL PROBLEM.
- 3 APPLY FOR (CIRCUIT/2)=EVEN
 4. MATE WITH : 2024360**3
 5. TAIL AND FITTING NAIL COPLANARITY TO BE 0.08MAXIMUM.
 6 PROHIBITED AREA OF PATTERN WIRING AND SOLDER.
 (FOR EACH AREA, THE WIRING THAT TOUCHES ON THE SOLDER CAN BE ATTACHED, THEN COVERED WITH A FILM TO KEEP SOLDER OUT.)

10.15	11.71	2024370603	○	---	2	60
8.40	9.96	2024370503	○	---	2	50
6.65	8.21	2024370403	○	---	2	40
B	A	EMBOSSED TAPE PACKAGE	MASS PRODUCTION	LOW VOL. TOOL	POWER (FITTING NAIL)	SIGNAL
		ORDER No.	SAMPLE PREPARATION ○: TOOLED △: WORK IN PROCESS ---: TOOLING TO BE CONFIRMED			CIRCUIT
CONNECTOR SERIES No. : 202437						

THIS DRAWING CONTAINS INFORMATION THAT IS PROPRIETARY TO MOLEX ELECTRONIC TECHNOLOGIES, LLC AND SHOULD NOT BE USED WITHOUT WRITTEN PERMISSION

DIMENSION UNITS	SCALE	CURRENT REV DESC:		molex		
mm	10:1					
GENERAL TOLERANCES (UNLESS SPECIFIED)				0.35 BB H=0.8 W2.3 HB8 PLUG ASSY		
ANGULAR TOL ± 3.0 °				PRODUCT CUSTOMER DRAWING		
4 PLACES	± 0.03	EC NO: 640065	2020/06/19	DOCUMENT NUMBER		
3 PLACES	± 0.03	DRWN: DGONDO	2020/06/23	DOC TYPE DOC PART REVISION		
2 PLACES	± 0.05	CHK'D: MSASAO	2020/06/23	2024371000 PSD 002 C		
1 PLACE	± 0.1	APPR: YNAITO		MATERIAL NUMBER		
0 PLACES	± 0.2	INITIAL REVISION:		CUSTOMER		
DRAFT WHERE APPLICABLE MUST REMAIN WITHIN DIMENSIONS		DRWN: NOKIMOTO	2018/02/27	SHEET NUMBER		
THIRD ANGLE PROJECTION		APPR: TKUSUHARA01	2018/11/30	GENERAL		
DRAWING		SERIES	202437	1 OF 1		